

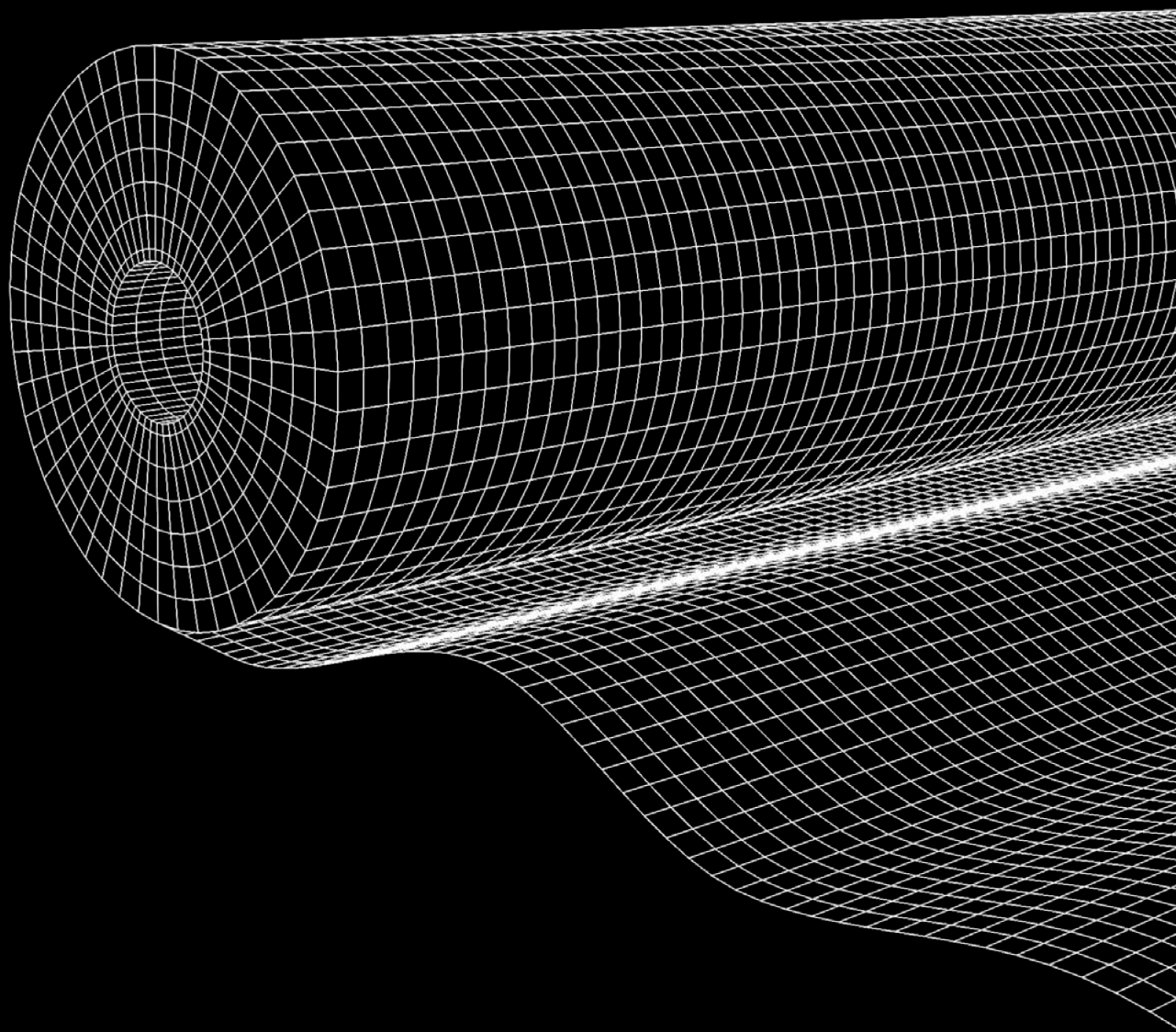
 INSTALLATION GUIDE

OBEX  **CORTEX^{FR}**

0221FR

Breather Membrane

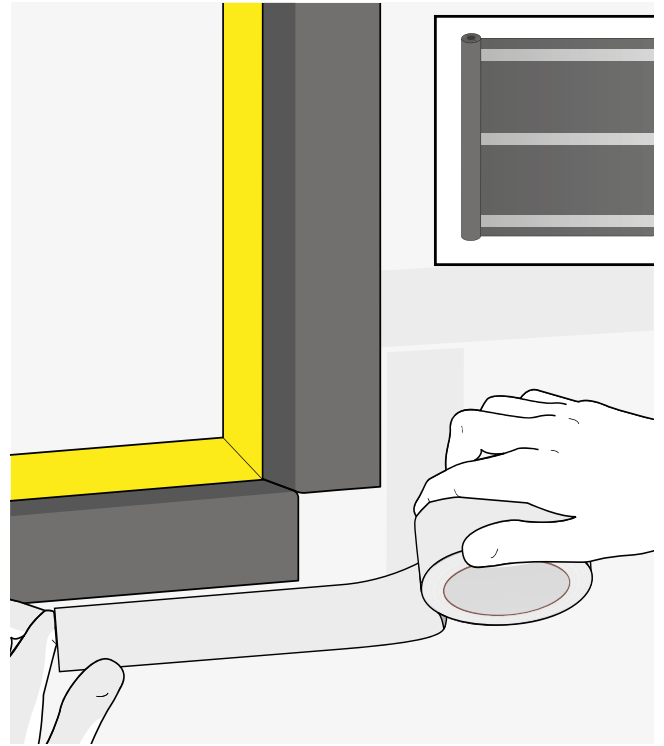
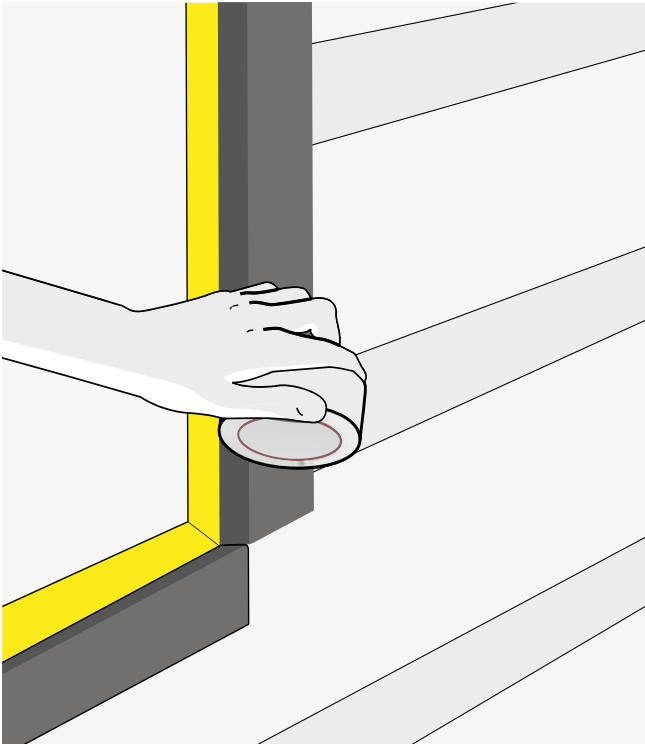
Class A2



 **OBEX**[®]

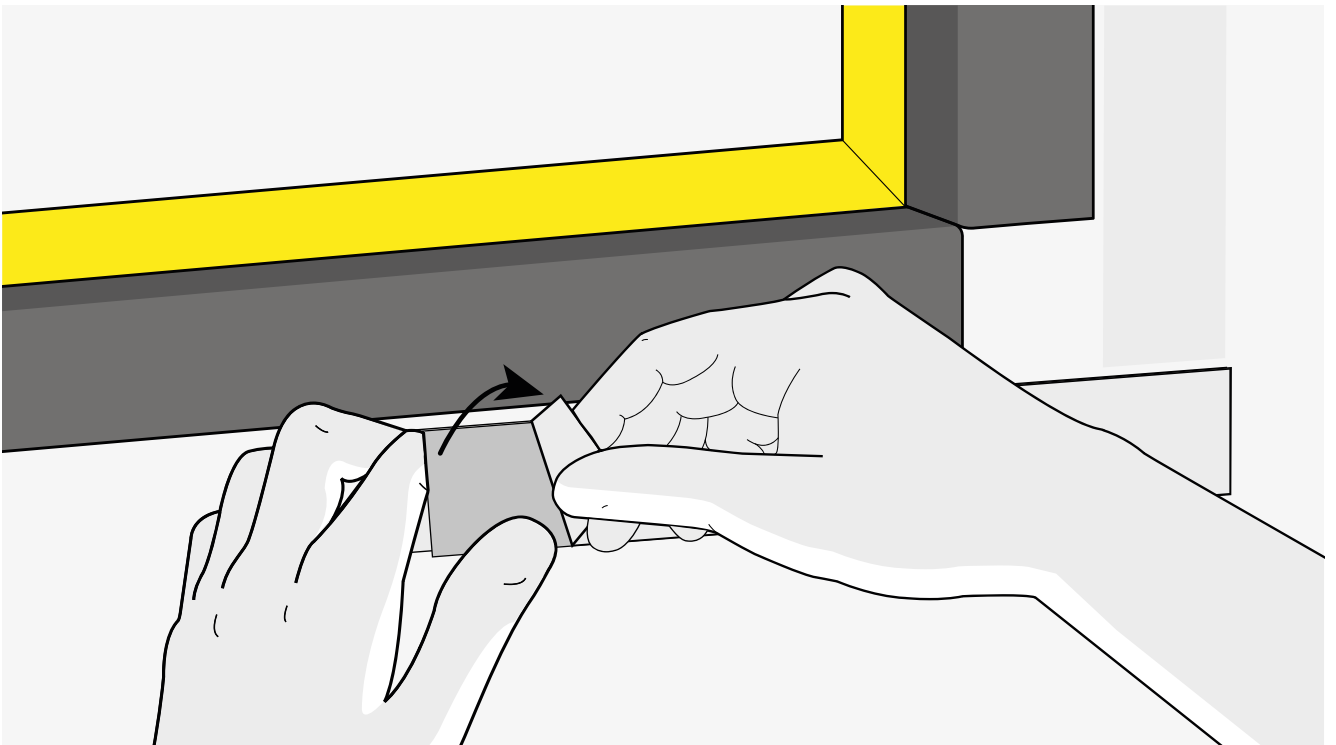
Important Notes

- » The membrane should be fixed in such a way as to shed water away from the sheathing board and below the lowest timber/ steel frame. Upper layers should be lapped over lower layers.
- » Horizontal laps should be at least 100 mm and vertical laps 150 mm. Vertical laps should be staggered wherever possible.
- » To assist in achieving the required air permeability, the lap joints and penetrations through the underlay can be sealed with OBEX CORTEX 0823FR UV Facade Tape and OBEX CORTEX 0824FR Double-Sided Tape.
- » Use the OBEX CORTEX 0825FR Installation Kit to ensure you have the correct quantities of tape. When installed as per the OBEX guidelines, you should require approximately 2 rolls of OBEX CORTEX 0824FR Double-Sided Tape and 6 rolls of OBEX CORTEX 0823FR UV Facade Tape.
- » Overlaps of at least 300mm should be allowed on corners.



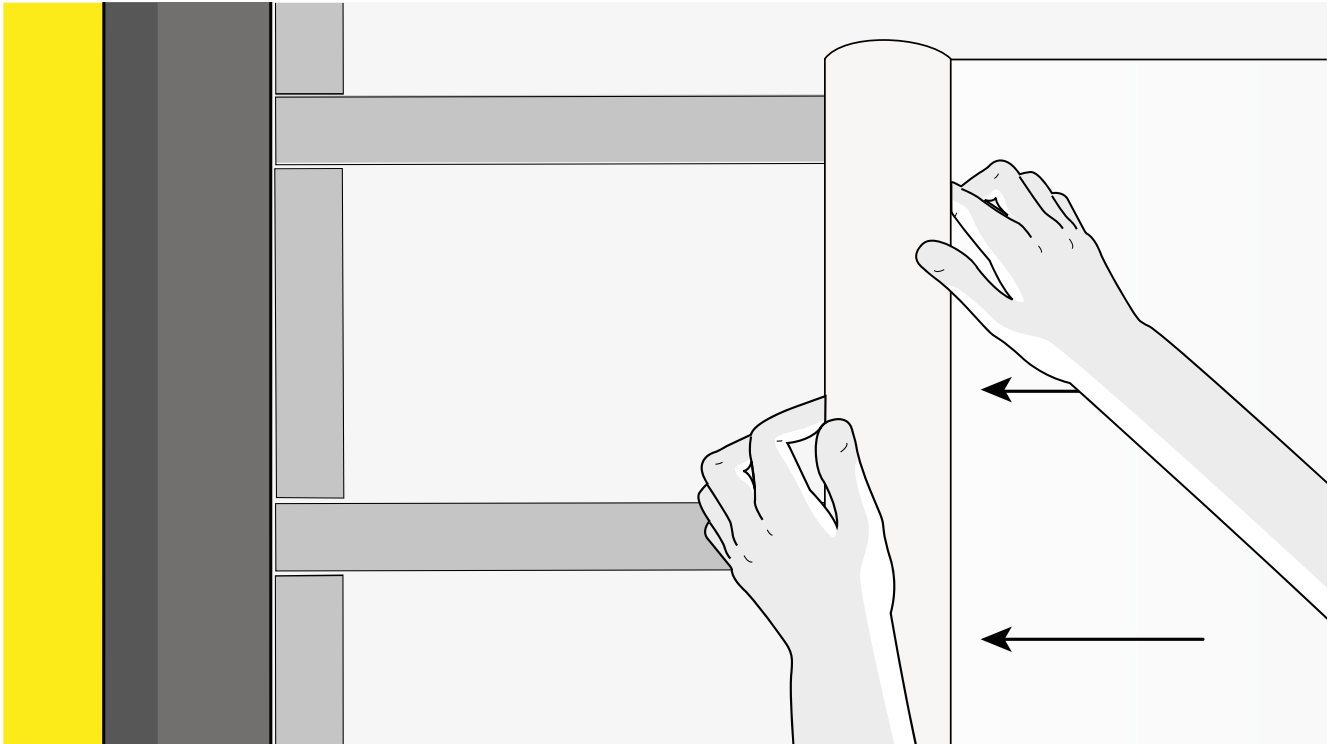
1

Start by applying the OBEX CORTEX 0824FR Double-Sided Tape; 3 strips to cover the width of the membrane (allowance for a 100 mm horizontal lap should be made). After this, apply tape to ensure all edges of the membrane will be adhered e.g. where the membrane is cut around windows and other penetrations.



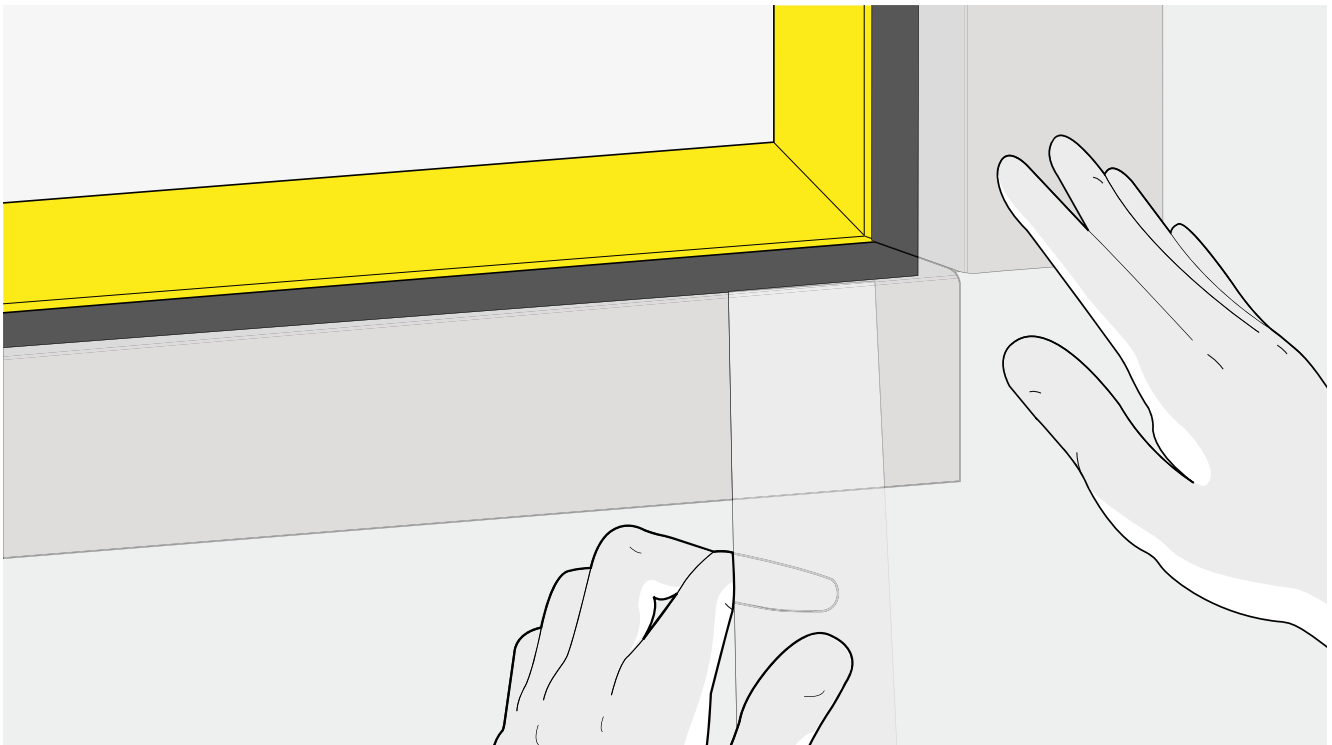
2

Once the previous step is complete, peel off the release liner from the OBEX CORTEX 0824FR Double-Sided Tape. Some may prefer to remove the release liner as they adhere the membrane.



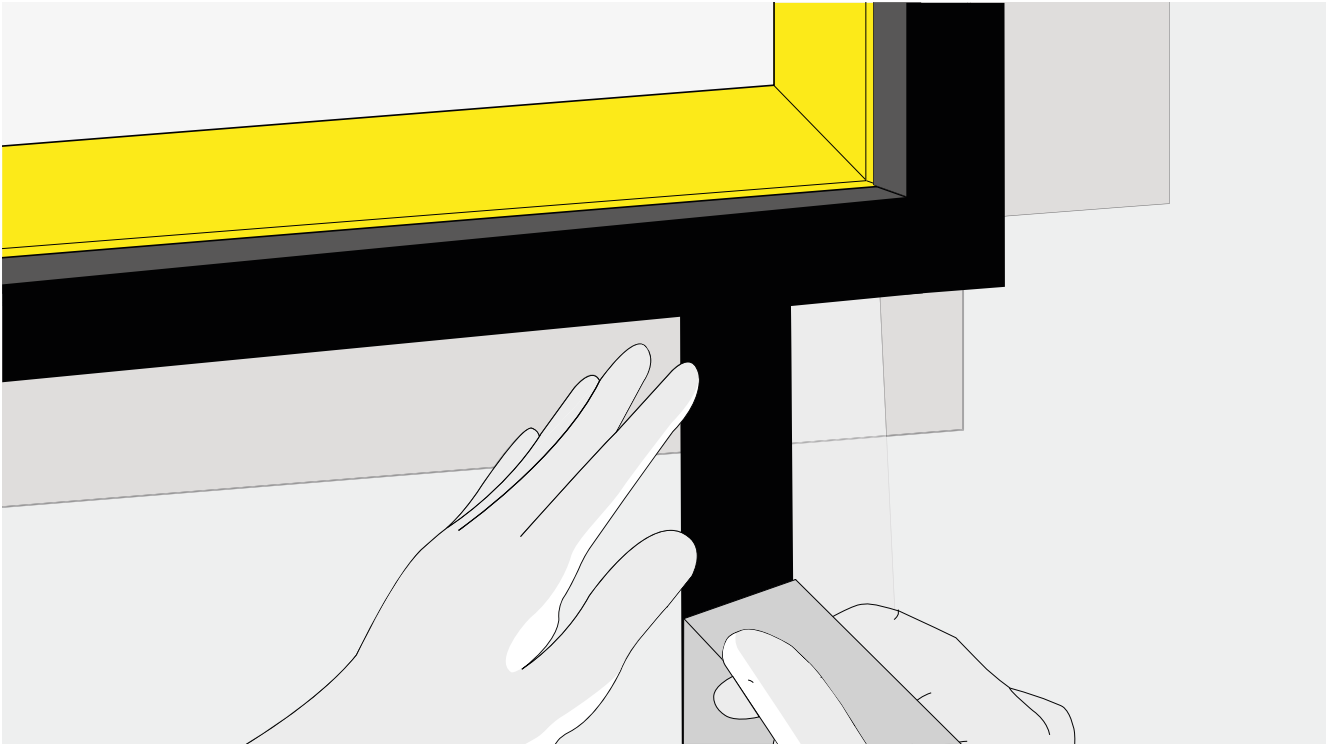
3

You're now ready to apply the breather membrane. Place the roll into position to cover the strips of double-sided tape and start rolling the membrane over the tape.



4

Where possible, the membrane should be continuous so any penetrations should be cut out during application, or it can be applied over the top and cut out afterwards. Horizontal laps should be 100 mm and vertical laps 150 mm. Vertical laps should also be staggered where possible. Corner overlaps should be at least 300 mm.



5

Finally, use the OBEX CORTEX 0823FR UV Facade Tape to seal off all the edges.



OBEX Protection Ltd. Unit 5 St. Modwen Park, Norton Road, Broomhall, Worcester, WR5 2QR

Call: +44 (0) 1905 337800 | **Email:** sales@obexuk.com | **Visit:** www.obexuk.com

© Copyright 2022 OBEX. All rights reserved. Company Registration No. 09157067, VAT No: 868 7649 48