



RUFUS & COCO



RUFUS & COCO

DELUXE COLLECTION

At Rufus & Coco, we're on a mission to help our furry friends live their best lives! We know that better pet relationships make better humans and better humans make a better world.

So we're here to delivery high-quality, innovative and eco-friendly pet products and experiences at a level of care commonly reserved for humans.

Because when pets live large, all of us do too.

Table of Contents

Accessoies Dog	3
Accessories Home	6
Accessories Essentials	8
Accessories Cat	9
Pet Toys	12



ACCESSORIES / DOG

Balmain Leather Dog Collar



Crafted for the most discerning dogs, this collar isn't just an accessory; it's a statement piece. Each stitch is a testament to our dedication in combining beauty, style and comfort - fusing fashion with functionality, like it's no big woof.

X-Small	36cm	2cm
Small	42cm	2cm
Medium	52cm	2.5cm
Large	62cm	2.5cm



Rose Bay ID Tag



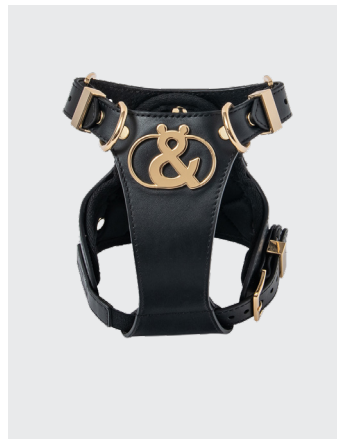
Meet the Rose Bay ID Tag, a paw-some addition to the Rufus & Coco Deluxe lineup! Crafted with the same fabulous gold enamel hardware that defines our accessories, this tag is not just an accessory; it's a statement. Rustproof and meticulously designed, it features an embossed Rufus & Coco logo on the front, while the back is a blank canvas just waiting for your pet's name to shine.





ACCESSORIES / DOG

Coogee Leather Pet Harness



Elevate your pet's style with an attitude as fierce as their fashion sense. The Coogee Leather Harness isn't just a harness; it's luxury on four legs, crafted for the utterly fabulous. Prepare for your pet to make a statement, turning heads, raising eyebrows, and leaving a stylish paw print on the world. Embrace individuality because your pet was born to stand out alongside their equally fierce companions.

X-Small (Cat)	30cm - 34cm
X-Small (Dog)	30cm - 34cm
Small	50cm - 58cm
Medium	60cm - 68cm
Large	70cm - 82cm



Balmain Leather Lead



Elevate your pet's sidewalk swagger with the Balmain Leather Lead. Our 100% genuine leather lead is not just a walk accessory; it's a style revolution for your fur bestie. With Signature Embossed Print and decked out with the exclusive gold Rufus & Coco Deluxe Collection Charm, this lead adds a touch of paw-some glam to every stroll.

One-size fits all (120cm in length x 2cm in width)





Balmain Dual Leather Lead Connection

Enter the Rufus & Coco Deluxe squad, featuring the fabulous Balmain Dual Leather Lead Connection – the secret weapon for fur parents running the dynamic duo show! Crafted from 100% genuine leather, it's not just a connection; it's the ultimate pet lifestyle accessory. With the signature Rufus & Coco embossed print it's a match made in heaven paired with the Balmain Leather Collar or Coogee Leather Pet Harness.



Mosman Silk Bandana

Elevate your pet's style with the Mosman Signature Silk Bandana from the Rufus & Coco Deluxe Collection – because your bestie deserves to be a fashion icon too! Crafted from 100% mulberry silk, this bandana is a chic accessory designed to fit small to extra-large dogs.



Balmain Leather Wrist Cuff

Introducing the Balmain Leather Human Wrist Cuff – because matching with your pet is the ultimate level of style synchrony! Crafted from 100% genuine leather, this wrist cuff adds a dash of flair to your ensemble. But wait, there's more! It's not just a cuff; it's part of the Signature Rufus & Coco Deluxe Collection, complete with a gold charm and embossed print that mirrors your pet's collar. Get ready to unleash a tidal wave of twinning cuteness that's as genuine as the leather it's made from.

One-size : 26cm (length) x 1.3cm (width)



Manly Leather Walking Bag

Elevate your pup's daily walks with the Manly Leather Walking Bag from the Rufus & Coco Deluxe Collection. More than just a bag, this meticulously crafted accessory is a fashion statement for your four-legged friend. Crafted from premium leather, it perfectly merges fashion with functionality.





ACCESSORIES / HOME



Rozelle Deluxe Pet Blanket

Pamper your pet with the Rozelle Deluxe Pet Blanket, a plush black haven of comfort. Made from premium materials, this luxurious blanket will take downtime to a whole new level with your bestie. The sophisticated design, featuring the Rufus & Coco Deluxe Collection embroidered tag, adds a touch of elegance to your home.



Enmore Plush Heartbeat Pillow

Crafted with extra love and care, this plush marvel is designed to be your bestie's anxiety-busting sidekick. With a built-in heartbeat that replicates the soothing rhythm of mum's embrace, providing your fur baby with a sense of security and tranquility. Elevate your pet's well-being and surround them in the lap of luxury with the Enmore Heartbeat Pillow – because they deserve nothing but the best.

Size: 28cm L x 19cm W 10.5cm D





Double Bay Deluxe Bed

The Double Bay Deluxe Bed is the ultimate throne for your fur royalty! This bed isn't just a cozy spot; it's a plush paradise designed for pets who know how to live their best lives.

Round: 80cm x 80cm x 20cm (height)



Bayview Handcrafted Stainless Steel Bowl

The Bayview Handcrafted Stainless Steel Bowl – the bold choice for pets with an appetite for the extraordinary! Now available in luxurious gold and sleek black, this bowl isn't just a feeding accessory; it's a statement piece for pets who live life large.

Size. Round 14cm x 14cm



Bondi Silicone Feed Mat

Meet The Bondi Silicone Feed Mat – where practicality meets a touch of flair for your four-legged friend. This mat isn't just about catching spills; it's about keeping mealtime mess in check with a hint of understated style. Designed to be as functional as it is sleek, The Bondi Mat is your pet's designated clean zone, ensuring every bite is tidy and hassle-free.

Size: 51cm L x 32cm H



Belmore Stainless Steel 3 in 1 Bottle Set

Dressed in the Signature Rufus & Coco Deluxe Collection Check Print, the Belmore Stainless Steel 3 In 1 Bottle Set's got the juice – literally! It holds nearly 1 liter, keeps it chill for a 24 hours, and looks darn good doing it.

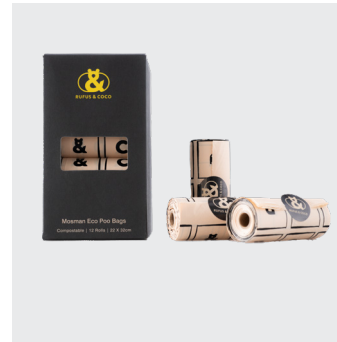
25cm H x 10cm W





ESSENTIALS

Mosman Eco Poo Bags



Introducing the Mosman Eco Poo Bags from the Rufus & Coco Deluxe Collection, a conscious choice for eco-savvy pet parents. Crafted from corn starch PLA (Polylactic Acid) PBAT (Butylene Adipate Terephthalate), these bags are 100% compostable and certified in accordance with Australian Standard AS 5810. They offer a sustainable solution without compromising style or function.



Manly Leather Poo Bag Holder



Introducing the Manly Leather Poo Bag Holder from the Rufus & Coco Deluxe Collection – because even your pup's essentials deserve a touch of extra. Crafted from 100% genuine leather, this stylish holder is adorned with rustproof gold enamel hardware for durability and flair. The easy snap closure keeps poo bags secure, and there's even room for your keys. The convenient islet at the back ensures easy access to bags when needed.

*Mosman Poo Bags sold separately.





ACCESSORIES / CAT

Balmain Leather Cat Collar



The Balmain Leather Cat Collar, the ultimate in kitty couture. Crafted in 100% genuine leather and designed with the precision of a cat's graceful leap. Embellished with two playful bells and adorned with gold hardware – because your cat deserves nothing but the finest in feline fashion.



\$ 49.95

Rose Bay ID Tag



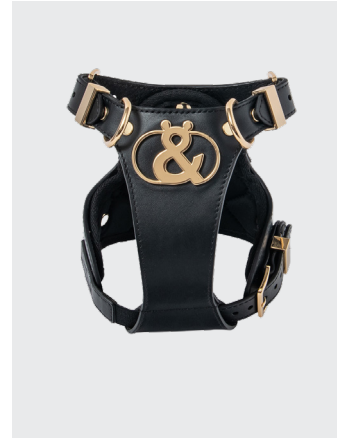
Meet the Rose Bay ID Tag, a paw-some addition to the Rufus & Coco Deluxe lineup! Crafted with the same fabulous gold enamel hardware that defines our accessories, this tag is not just an accessory; it's a statement. Rustproof and meticulously designed, it features an embossed Rufus & Coco logo on the front, while the back is a blank canvas just waiting for your pet's name to shine.



ACCESSORIES / CAT



Coogee Leather Pet Harness



Elevate your pet's style with an attitude as fierce as their fashion sense. The Coogee Leather Harness isn't just a harness; it's luxury on four legs, crafted for the utterly fabulous. Prepare for your pet to make a statement, turning heads, raising eyebrows, and leaving a stylish paw print on the world. Embrace individuality because your pet was born to stand out alongside their equally fierce companions.

X-Small (Cat)

30cm - 34cm



Balmain Leather Lead



Elevate your pet's sidewalk swagger with the Balmain Leather Lead. Our 100% genuine leather lead is not just a walk accessory; it's a style revolution for your fur bestie. With Signature Embossed Print and decked out with the exclusive gold Rufus & Coco Deluxe Collection Charm, this lead adds a touch of paw-some glam to every stroll.

One-size fits all (120cm in length x 2cm in width)





Glebe Leather Pet Carrier

Crafted from 100% genuine vegan leather, this carrier is more than a travel essential; it's a fashion statement. Adorned with our signature Rufus & Coco embossed logo, it's the epitome of pet-couture.



Mosman Silk Bandana

Elevate your pet's style with the Mosman Signature Silk Bandana from the Rufus & Coco Deluxe Collection – because your bestie deserves to be a fashion icon too! Crafted from 100% mulberry silk, this bandana is a chic accessory designed to fit small to extra-large dogs.



Balmain Leather Wrist Cuff

Introducing the Balmain Leather Human Wrist Cuff – because matching with your pet is the ultimate level of style synchrony! Crafted from 100% genuine leather, this wrist cuff adds a dash of flair to your ensemble. But wait, there's more! It's not just a cuff; it's part of the Signature Rufus & Coco Deluxe Collection, complete with a gold charm and embossed print that mirrors your pet's collar. Get ready to unleash a tidal wave of twinning cuteness that's as genuine as the leather it's made from.





RUFUS & COCO

ENTERTAINMENT



Seaforth Life Saver

Meet the Seaforth Life Saver – your pup’s ultimate playtime sidekick! Part of the Rufus & Coco Deluxe range, this chew toy is a design masterpiece crafted for endless gnawing sessions. Constructed from durable Oxford polyester fabric, it boasts plush padding and netting inside, standing strong against your pup’s playful chompers.



Chiswick Ball Duo

The Chiswick Ball Duo – a playful pair of textured balls that redefine playtime. One ball features the classic knot design in sleek black, while its companion flaunts a textured knot in sophisticated ecru.

Ball 1: 70mm x 70mm





Clovelly Chew & Chase

This ingenious tug and chew toy redefines the meaning of playtime. The rope, woven from 100% polyester, meets its playful match in the attached chew toy made from trendy TPR (Thermoplastic Rubber), a material loved in athleisure circles for its durability.

Size: 14.7mm x 4.4mm. Rope length extended 24cm long.



Darlington Bear

Meet the Darlington Bear – it's fluff with a luxurious touch! Crafted from 100% polyester velour fleece, this plush sensation brings the plush, velvety feel to a whole new level. But here's the secret sauce: hidden inside, it's fortified with robust netting and padding, acting like a superhero shield for your pup's teeth.

Size: 22cm H x 15cm L x 16cm D



Belrose Interactive Cat Toy

The Belrose Interactive Cat Toy is an irresistible allure for the finest of felines. In slow-motion glam, one feather transforms the spinning toy into a sultry dance, tailored for pet parents preferring tenderness over frantic frenzy. With a built-in sensor, that brings on the automatic play and shutdown based on your cat's whims.





www.rufusandcoco.com.au
525 Military Road, Mosman NSW 2088 Australia
hello@rufusandcoco.com.au | +61 (0) 9960 5019