



# mockingbird

## INSTRUCTION MANUAL

Read all instructions BEFORE assembly and USE of product. KEEP INSTRUCTIONS FOR FUTURE USE.

ADULT ASSEMBLY REQUIRED  
STYLES AND COLORS MAY VARY  
**M1101**

**⚠ WARNING: CHOKING HAZARD**  
Adult assembly required because of small parts.  
Keep assembly parts out of reach of children under 3 years.

DCP-11022018-V1

**[hellomockingbird.com](http://hellomockingbird.com)**

# ⚠️ WARNING

**WARNING:** Please follow all of these instructions to ensure the safety of your child. Keep these instructions for future reference.

**WARNING:** Failure to follow these instructions could result in serious injury or death.

**WARNING:** Avoid serious injury from falling or sliding out. Always ensure that the child is properly positioned by using the safety harness according to these instructions.

**WARNING:** Never leave children unattended.

**WARNING: CHOKING HAZARD** Adult assembly required because of small parts.

Keep (assembly parts) out of reach of children under 3 years.

**CAUTION:** Purses, shopping bags, parcels, diaper bags or accessory items when placed on the unit may change the balance of the stroller and cause hazardous/unstable conditions.

- The maximum weight that can be carried in the lower basket is 3 lbs (1.36 kg). Excessive weight may cause a hazardous/unstable condition to exist.
- Before allowing the children near the stroller, be certain the stroller is fully erect and latched in the open locked position.
- Use of the stroller with children weighing more than 50 pounds or over 42 inches tall will cause excessive wear and stress on the stroller and may cause hazardous/unstable condition to exist.
- **NEVER** use the stroller on stairways or escalators.
- **NEVER** use the stroller with roller skates or in-line skates.
- **NEVER** allow your stroller to be used as a toy.

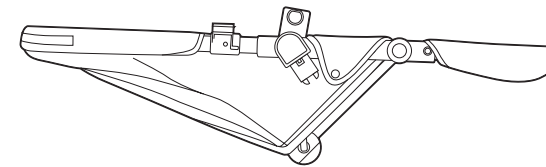
**TO PREVENT INJURY:** Make sure all body parts are clear of the stroller when folding and unfolding.

## Care and Maintenance

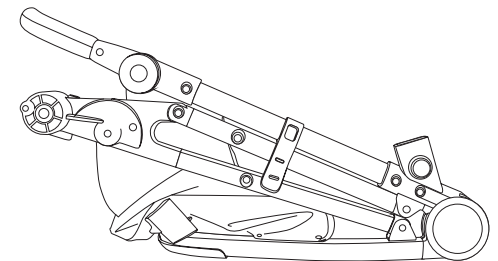
- To clean the plastic parts on stroller, use a mild cleaning solution with warm water on a sponge or damp cloth. Hand wash fabric with damp cloth and air dry. Do not use bleach.
- To keep your stroller wheels from squeaking, use silicone or graphite based lubricant.
- Check your stroller for loose screws, worn parts, torn material or stitching on a regular basis. Replace or repair parts as needed.
- Discontinue use of stroller if it should become damaged or malfunctions.

# Parts List

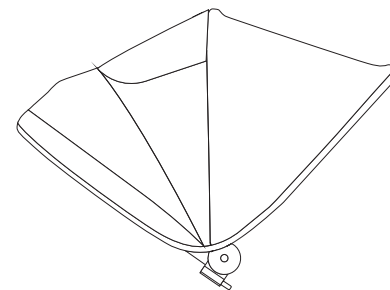
**IMPORTANT!** Please remove all parts from the package and identify them before assembly.



**Seat**  
Part # MP1501



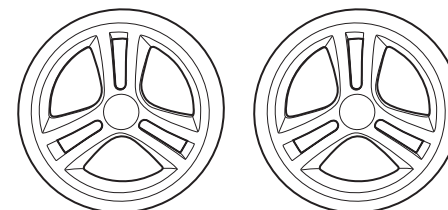
**Stroller Frame**  
Part # MP1502



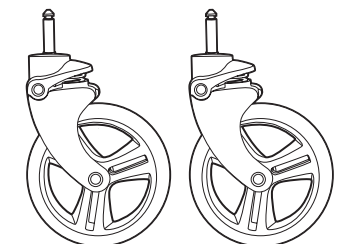
**Canopy**  
Part # MP1503



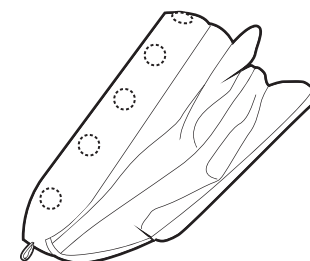
**Child Bar**  
Part # MP154



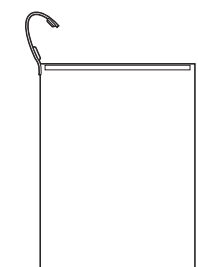
**Rear Wheels (x2)**  
Part # MP1505



**Lock & Swivel Front Wheels (x2)**  
Part # MP1506

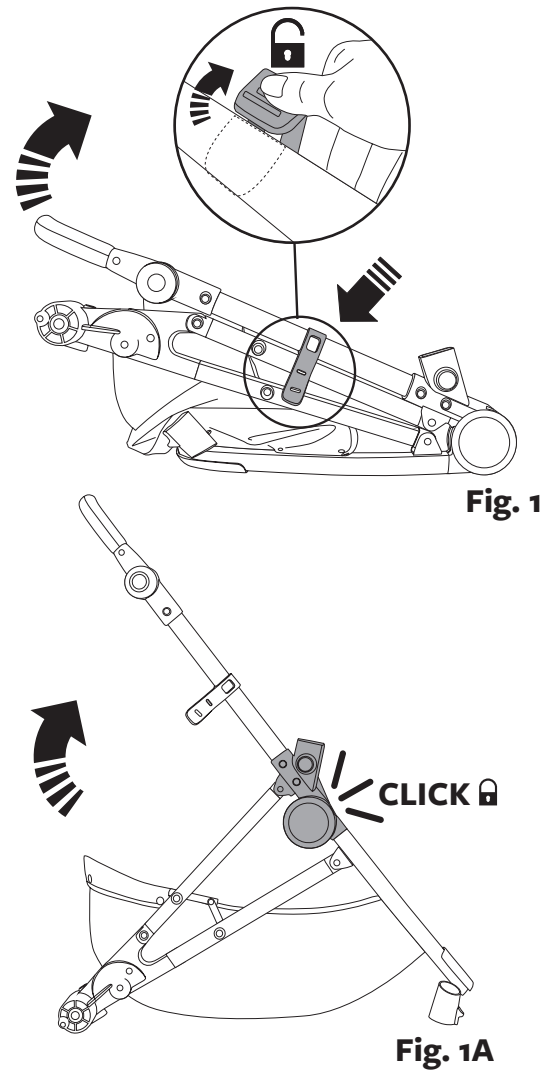


**Sunshade**  
Part # MP1507



**Wet Bag**  
Part # MP1508

# Assembly

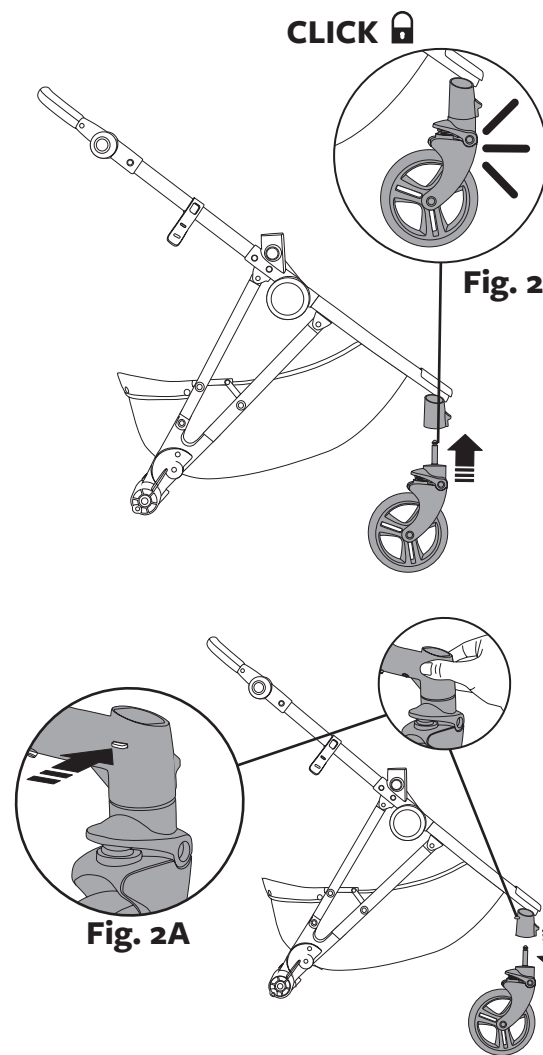


1.

**WARNING:** Care must be taken when folding and unfolding the stroller to prevent finger entrapment.

## Opening Stroller

- First, release the locking latch clip which is located on the right side of the stroller. (Fig. 1)
- Second, lift up on the stroller handle with both hands until the stroller frame is in a fully opened and in a locked position. (Fig. 1A) The stroller is in a fully locked position when both side handle latches are in a fully locked position and “CLICKS”.



2.

**NOTE:** Before attaching front wheel, make sure the stroller is in a fully open position.

## Attaching Front Wheels

- Push front wheel post into the front wheel housing until it “CLICKS” into a fully locked position. (Fig. 2)

**NOTE:** Pull downward on wheel to ensure that the wheel is securely locked.

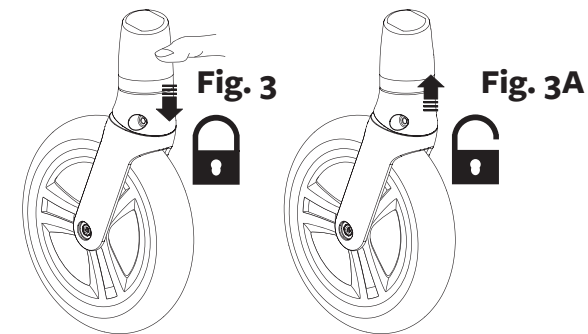
- Repeat on opposite side.

## Removing Front Wheels

**NOTE:** Make sure the back brakes are fully engaged.

- Press the metal button located on the back of the wheel housing and push inward to release. (Fig. 2A)
- Repeat on opposite side.

# Assembly



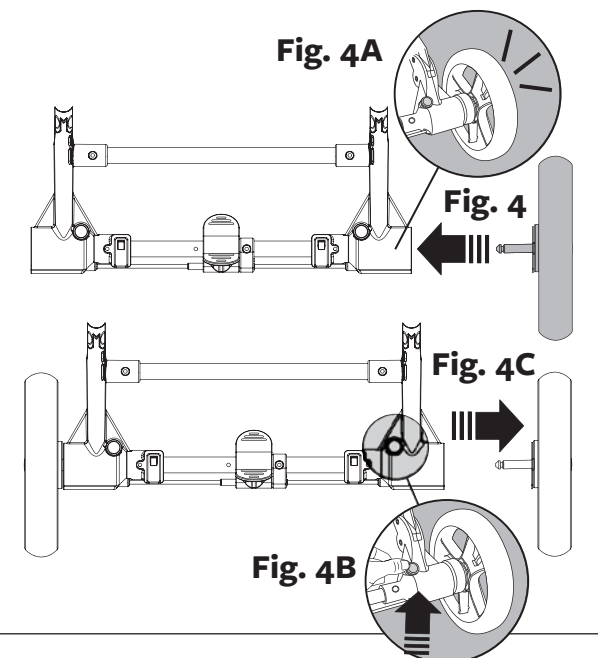
3.

## To Lock Front Swivel Wheels

- Press downward on the lever located on the top of the front wheel housing. Rotate wheel until it “CLICKS” into a fully locked position. (Fig. 3)

## To Unlock Front Swivel Wheels

- Press upward on the lever located on the top of the front wheel housing until it “CLICKS” into a fully unlocked position. (Fig. 3A)



4.

## Attaching Rear Wheels

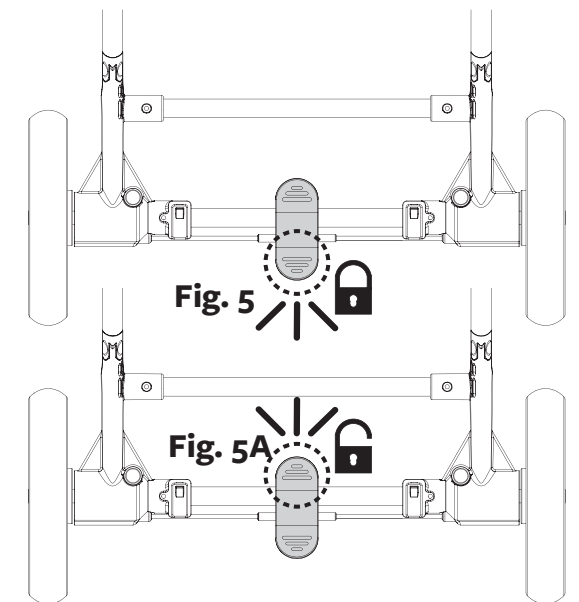
- Push rear wheel posts into the rear wheel housing (Fig. 4) until it “CLICKS” into a fully locked position. (Fig. 4A)

**NOTE:** Pull outward on each wheel to ensure that each wheel is securely locked.

- Repeat on opposite side.

## Removing Rear Wheels

- Press button located on the back of the wheel housing (Fig. 4B) and pull wheel outward until wheel is released. (Fig. 4C)
- Repeat on opposite side.



5.

**WARNING:** Always lock brakes when the stroller is not being pushed so that the stroller will not roll away. Never leave stroller unattended on a hill or incline as the stroller may slide down the hill.

**WARNING:** NEVER leave child unattended in stroller.

## Rear Wheel Brake – One Touch Brake System

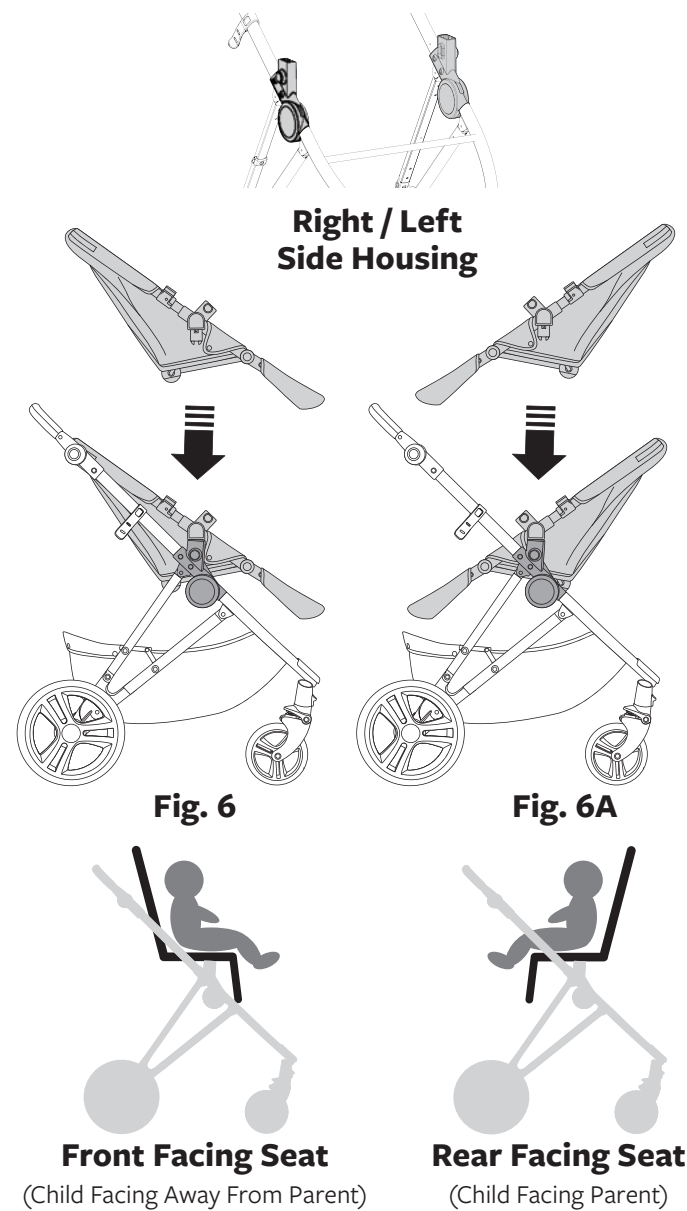
### To Engage Brakes

- Apply light downward pressure on bottom section of the linked brake lever located in the middle of the rear wheel axle. (Fig. 5) Check to make sure the brakes are in a fully locked position, stroller will not move when pushed.

### To Release Brakes

- Apply light downward pressure on top section of the linked brake lever located in the middle of the rear wheel axle. (Fig. 5A)

# Assembly



## 6.

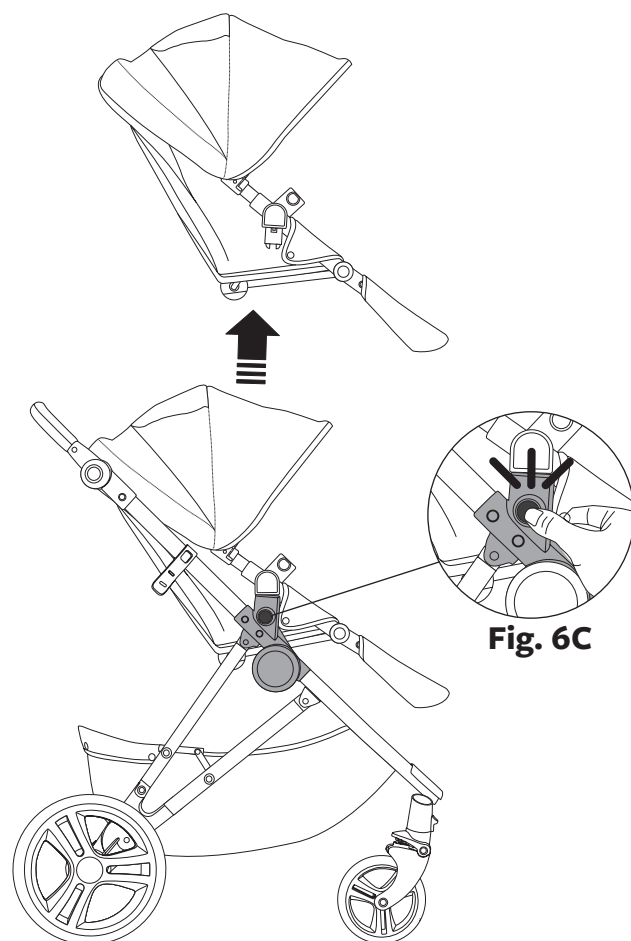
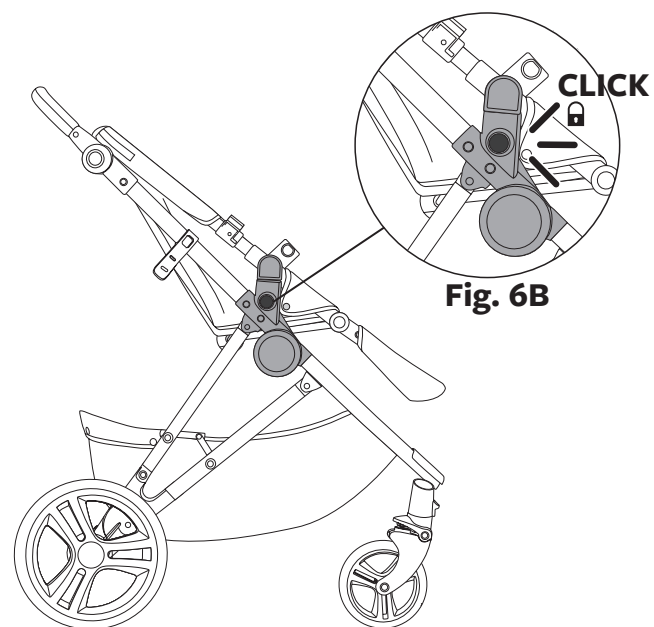
### Attaching Seat

- Face seat to the preferred direction. Front facing seat (**Fig. 6**) or rear facing seat (**Fig. 6A**). Press seat into right / left housing until it “CLICKS” into a fully locked position (**Fig. 6B**).

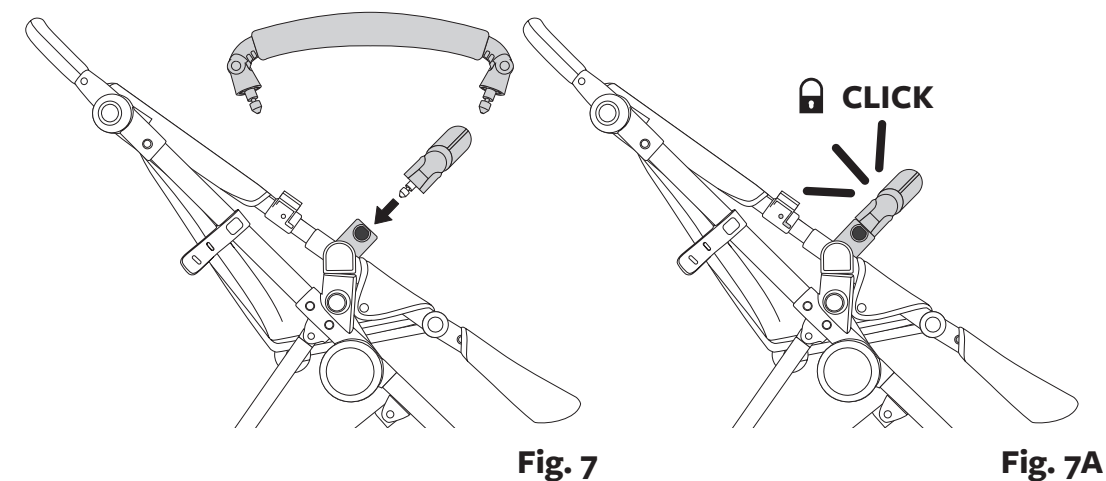
**NOTE:** Pull upward on seat to ensure that the seat is securely locked into right / left seat housing.

### Removing Seat

- Press the buttons located on both sides of the stroller frame and lift seat upward to fully remove. (**Fig. 6C**)



# Assembly



## 7.

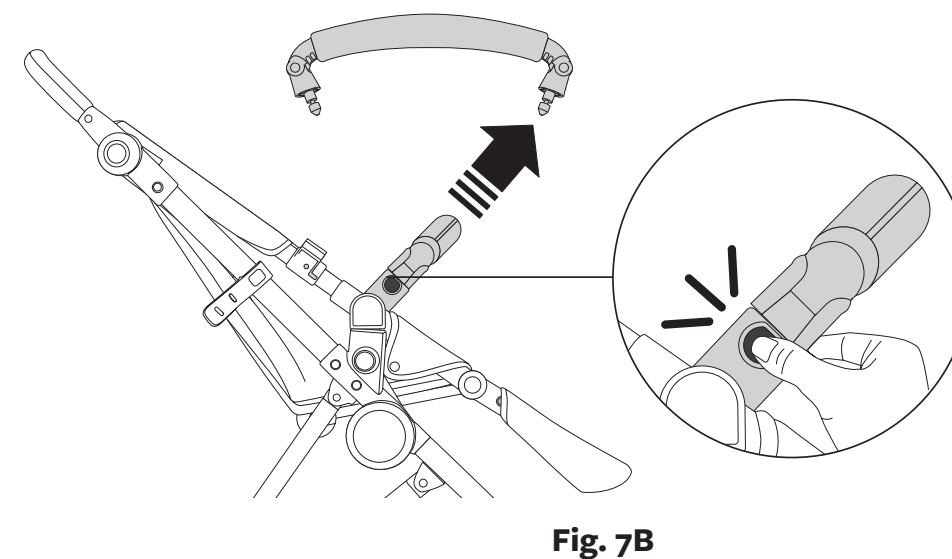
### Attaching Child Bar

- Insert left / right sides of the child bar into the child bar housing located on the left / right side of the stroller frame. (**Fig. 7**)
- The child bar “CLICKS” on both sides once it is in a fully locked position. (**Fig. 7A**)

**NOTE:** Pull upward on the child bar to ensure it is securely locked onto the stroller frame.

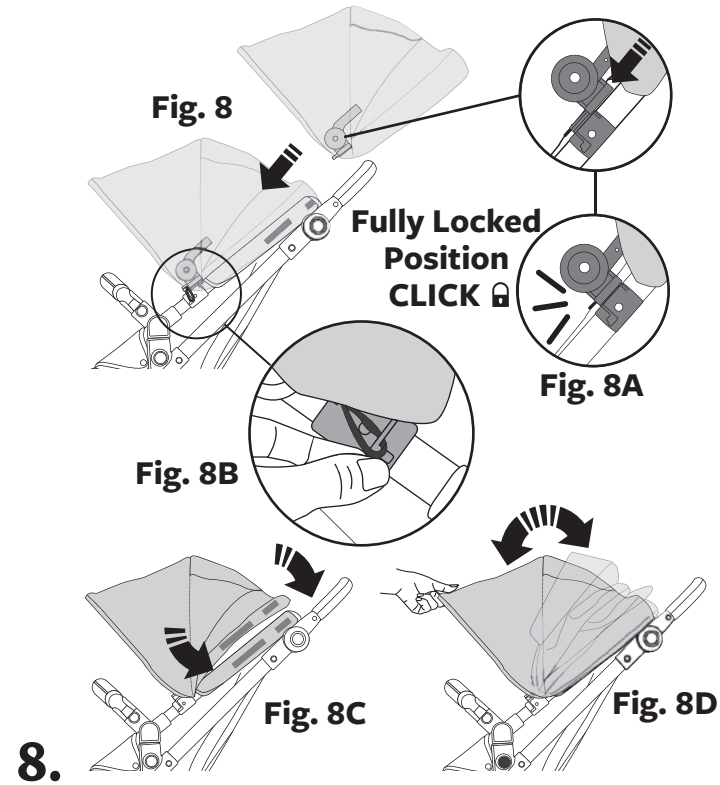
### Removing Child Bar

- Press both child bar buttons located on both sides of the stroller frame and pull upward to release. (**Fig. 7B**)





# Assembly



## 8. Attaching Canopy

- Place back of canopy onto top of seat support. (Fig. 8)
- Then, slide both sides of the canopy locks into both canopy housings until it “CLICKS” into a fully locked position. (Fig. 8A)
- Locate on left / right side of canopy elastic loops and secure around stroller frame hook. (Fig. 8B)
- Match the velcro edges of the canopy with the top seat velcro until the canopy is fully attached to the top seat. (Fig. 8C)
- Pull the front edge of the canopy forward until fully opened. (Fig. 8D)

## To Close Canopy

- Push backward on the front edge of canopy until it is all the way collapsed. (Fig. 8E)

## Removing Canopy

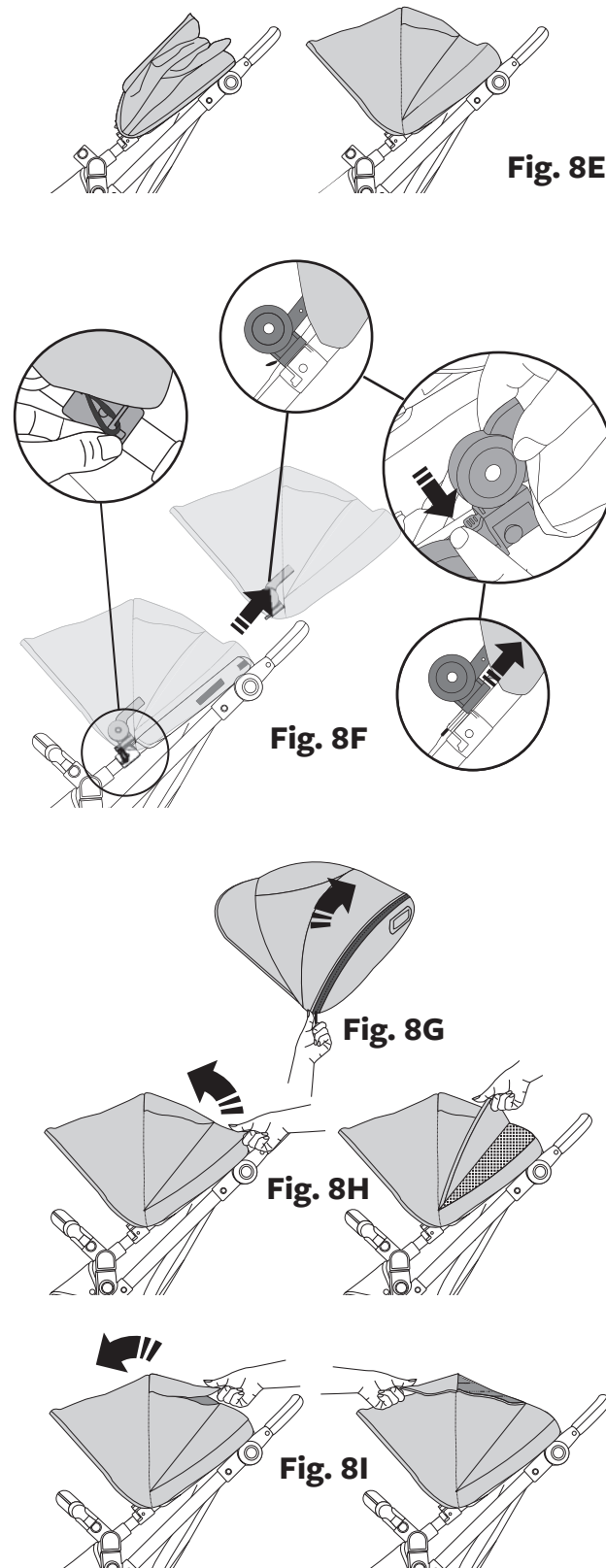
- First locate on left / right side of sunshade elastic loops and remove from stroller frame hook. Next unvelcro the canopy off the top seat. Then press canopy release buttons downward and slide canopy locks upward until fully released. (Fig. 8F)

## To Open Canopy Vent Section

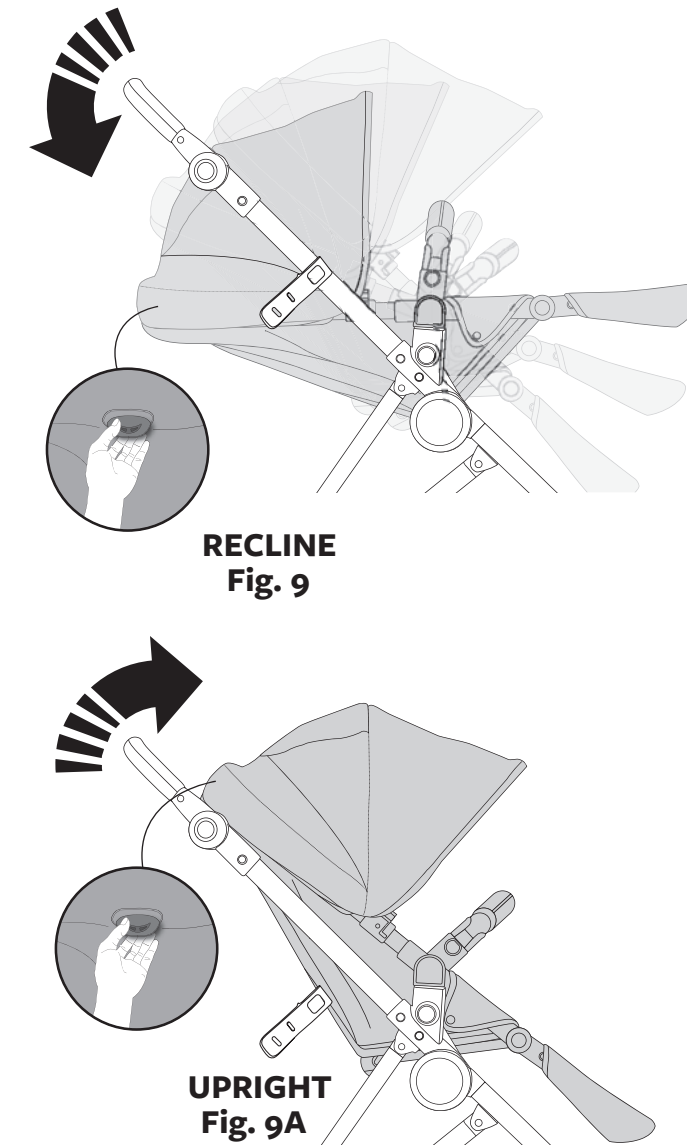
- Locate zipper on back of canopy and unzip from left to right completely. (Fig. 8G)
- Pull upward on vent flap until it is in a fully opened position. (Fig. 8H)

## To Open Peek A Boo Window

- Pull upward on window flap until it is in a fully opened position. (Fig. 8I)



# Setup and Use



## 1.

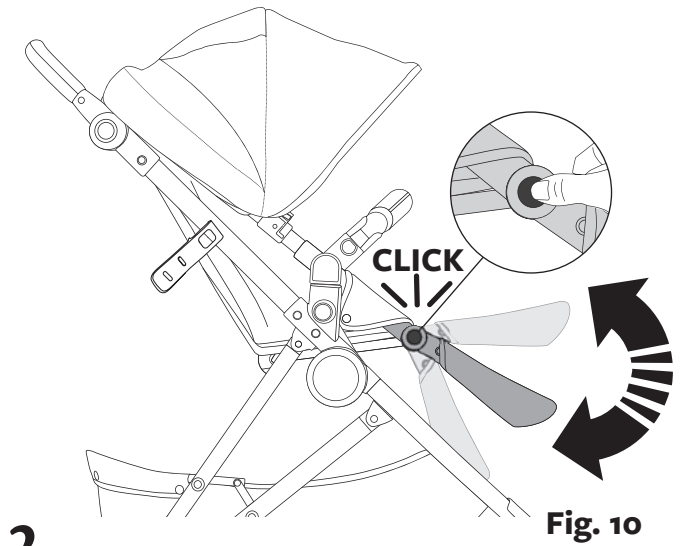
### Seat Back Recline Positioning

#### To Recline Seat

- Lift the recline latch located on the top center of the seat upward and rotate seat downward into any of the three positions. (Fig. 9)

#### To Return To An Upright Position

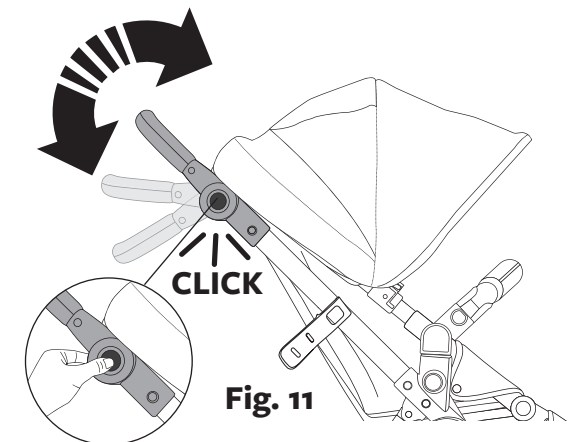
- Lift the recline latch upward and rotate seat upward into any of the three positions. (Fig. 9A)



## 2.

### Foot Rest Adjustment

- Press both left / right recline buttons located on left/right side of foot rest. While pressing both recline buttons, rotate foot rest upward or downward to its desired position.
- The footrest “CLICKS” on both sides once it is in a fully locked position. (Fig. 10)

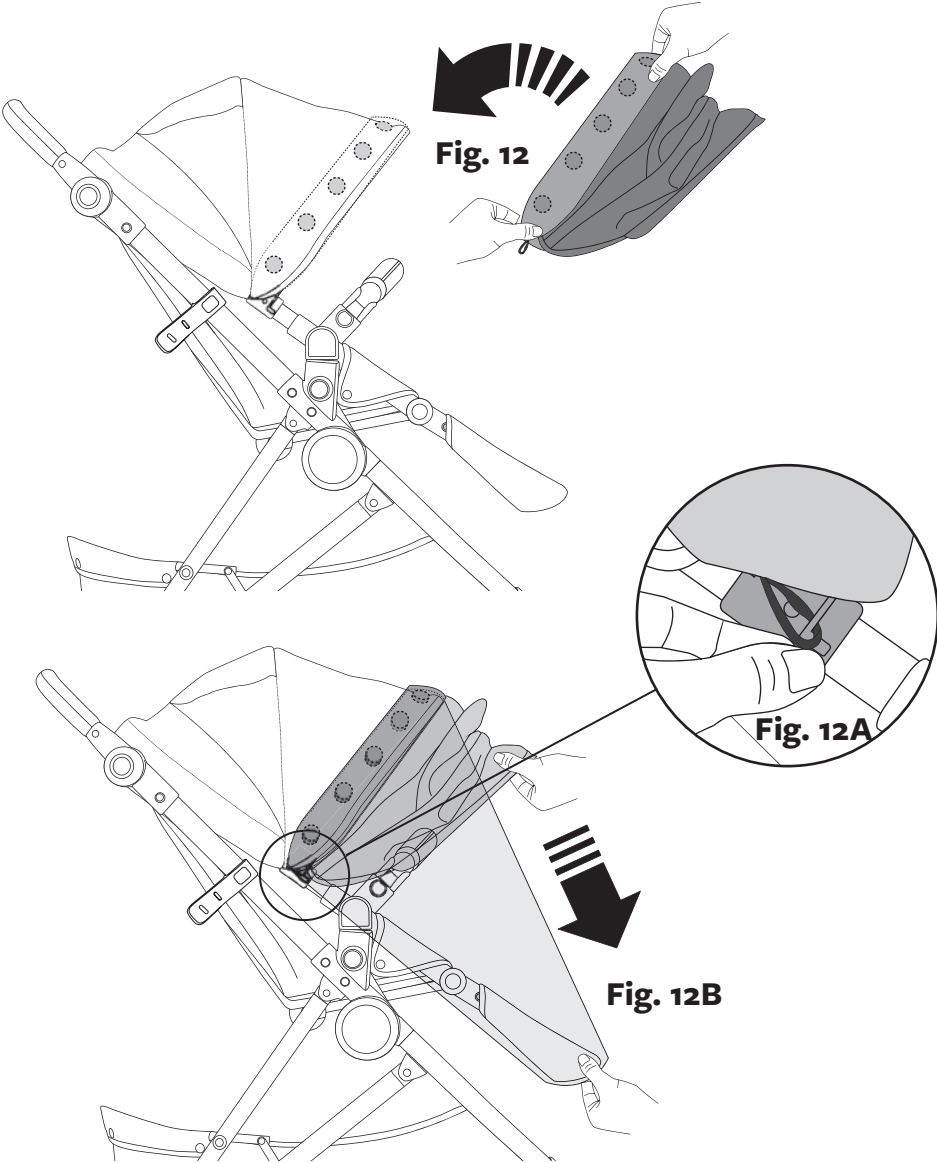


## 3.

### Adjustable Handle

- Press both left / right buttons located on left/ right side of the stroller handle inward. While pressing both buttons rotate the handle upward or downward to its desired position.
- The handle “CLICKS” on both sides once it is in a fully locked position. (Fig. 11)

# Setup and Use

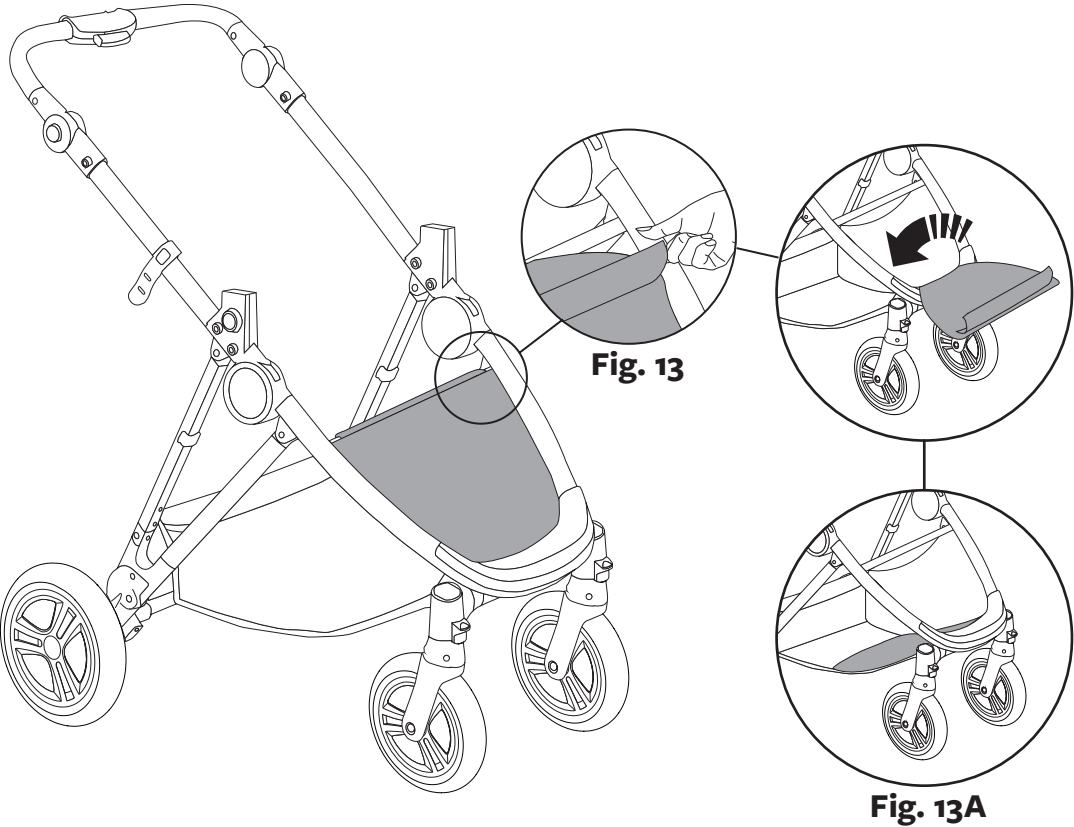


4.

### Attaching Sunshade

- Align left and right sides of sunshade on top of front edge of canopy. (Fig. 12)
- The sunshade will locate corresponding magnet on canopy edge.
- Locate on left / right side of sunshade elastic loops and secure around stroller frame hook. (Fig. 12A)
- Pull down the end of the sunshade until it fully covers the footrest. (Fig. 12B)

# Setup and Use

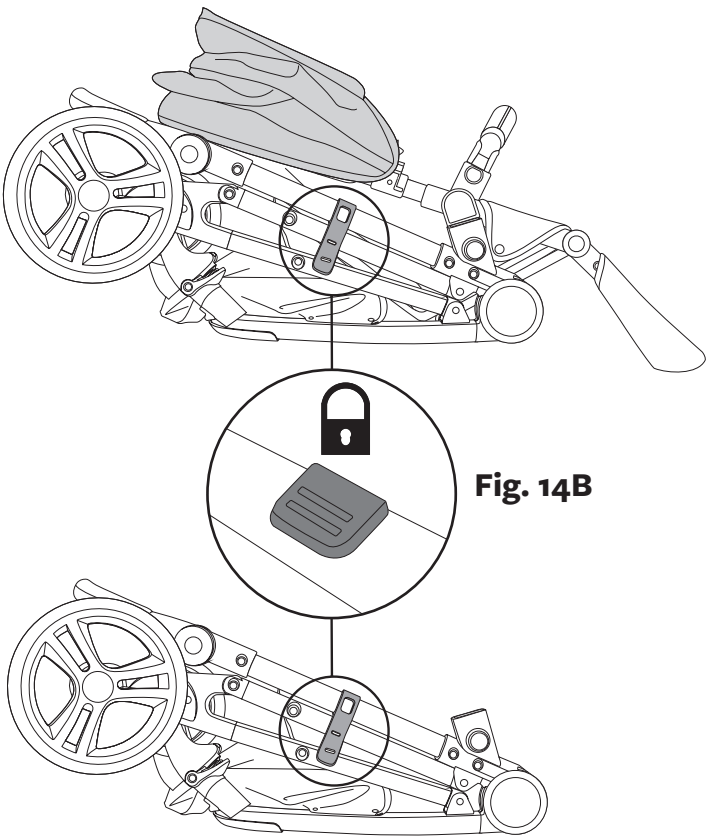
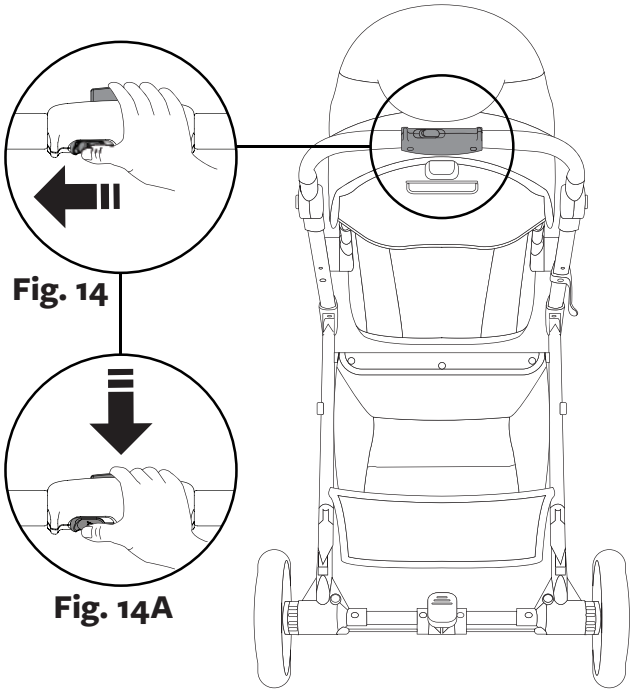


5.

### Adjusting Basket Flap

- Locate velcro flap behind basket and unvelcro from the cross bar. (Fig. 13)
- Insert basket flap into the storage area until it rests completely flat. (Fig. 13A)

# Setup and Use



## 6.

### Folding Stroller

**NOTE:** Press the brake pedal down until it “CLICKS” into the locked position.

**Make sure the brake pedal is pressed down completely.**

Always set the brake pedal when parking the stroller.

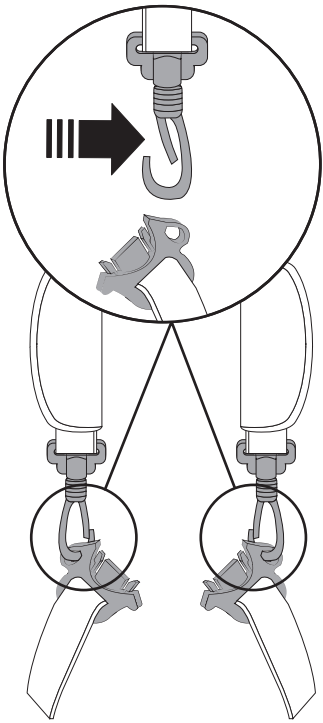
### Folding Stroller With Seat Attached

- Close the canopy.
- Position the seat to an upright position.
- Position footrest to its lowest position.
- Slide the unlock tab with your thumb to the farthest left position and hold (**Fig. 14**)
- While holding unlock tab, squeeze the fold lever inward and push downward on the handle (**Fig. 14A**) until the auto-latch is in a fully locked position. (**Fig. 14B**)

### Folding Stroller Without Seat Attached

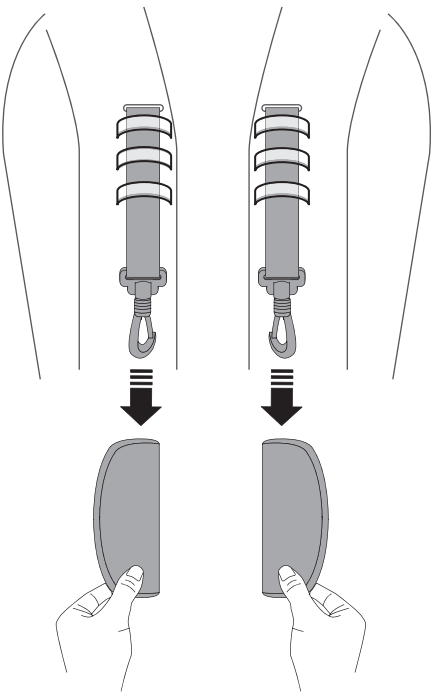
- Slide the unlock tab with your thumb to the farthest left position and hold. (**Fig. 14**)
- While holding unlock tab, squeeze the fold lever inward and push downward on the handle (**Fig. 14A**) until the auto-latch is in a fully locked position. (**Fig. 14B**)

# Adjusting Shoulder Straps



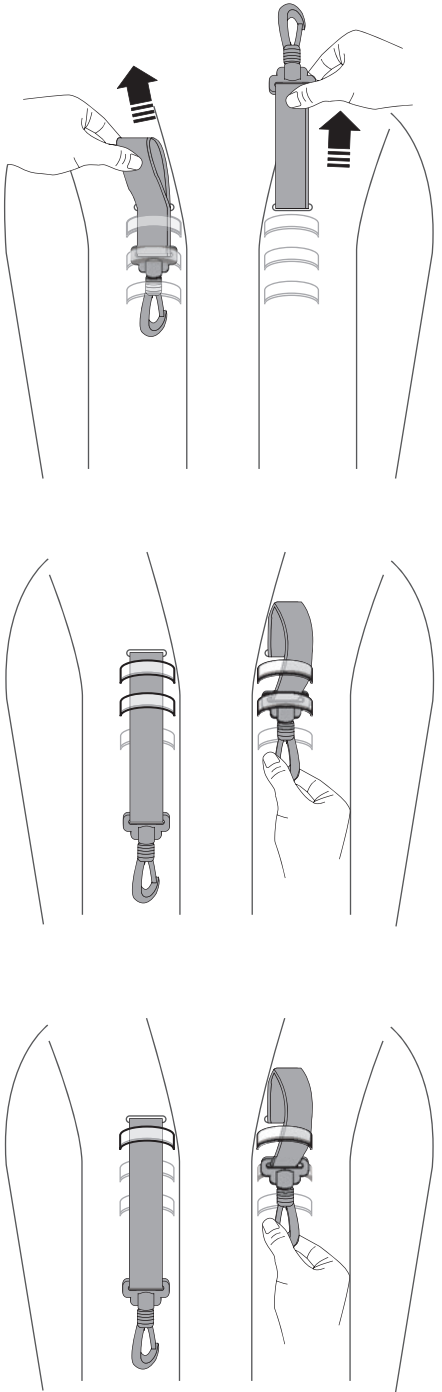
## 1.

- Unhook shoulder strap from center hub.



## 2.

- Remove shoulder pads from strap.



## 3.

- Slide strap out, upward, and into one of the three shoulder strap height positions.

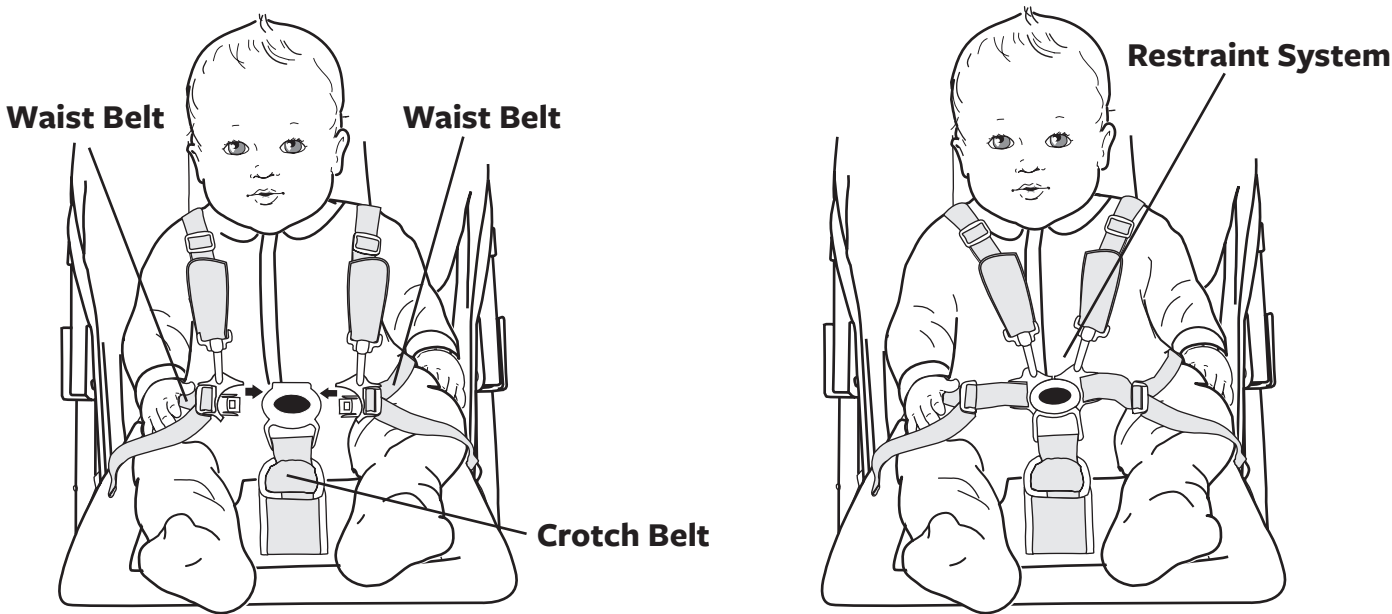
# Securing Child

### Before Placing Your Child In Stroller

- Close Canopy, press the brake pedal down until it “CLICKS” into the locked position.

### Make Sure The Brake Pedal Is Pressed Down Completely

- Always set the brake pedal when parking the stroller.



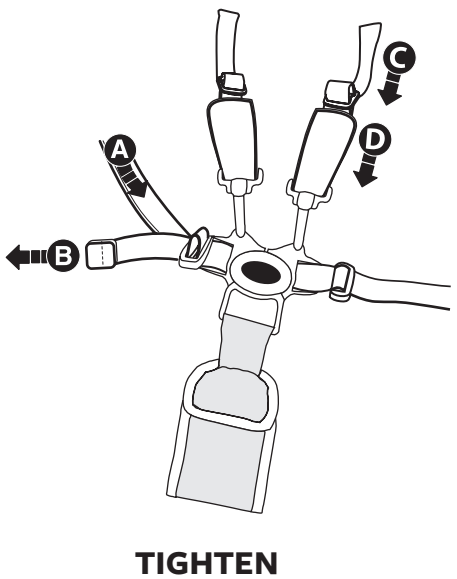
1.

- Place your child in the stroller. Position the crotch belt between your child’s legs.
- Pull shoulder straps over child’s arm and shoulder and fasten **both** strap ends to the restraint system.
- Fasten **both** waist belts to the buckle on each side of the crotch belt.
- Make sure you hear a “**click**” on both sides.
- Check to be sure the restraint system is securely attached by pulling it away from your child. The restraint system should remain attached.

2.

- Tighten each waist belt and shoulder strap so that the restraint system is snug against your child.
- Please refer to the next section for instructions to tighten the waist belts.

# Securing Child

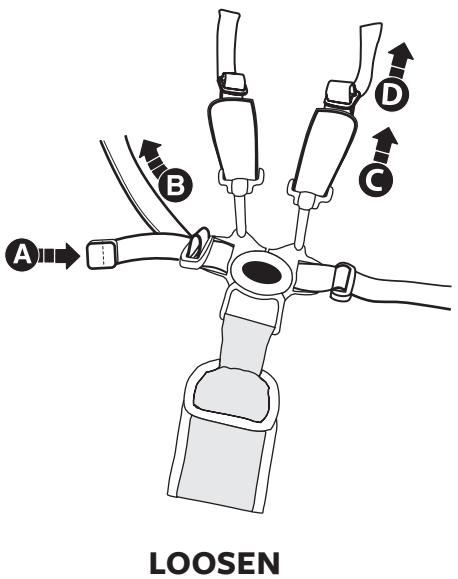


TIGHTEN

3.

### To Tighten The Waist Belts And Shoulder Straps

- Feed the anchored end of a waist belt up through the buckle to form a loop **A**. Pull the free end of the waist belt **B**.
- Repeat this procedure to tighten the other waist belt.
- Feed the top end of the shoulder strap through the plastic stay to form a loop **C**. Pull the bottom end down to tighten the strap **D**.
- Repeat this procedure to tighten the other shoulder strap.



LOOSEN

### To Loosen The Waist Belts And Shoulder Straps

- Feed the free end of the waist belt up through the buckle to form a loop **A**. Enlarge the loop by pulling on the end of the loop toward the buckle. Pull the anchored end of the waist belt to shorten the free end of the waist belt **B**.
- Repeat this procedure to loosen the other waist belt.
- Feed the bottom end of the shoulder strap through the plastic stay to form a loop **C**. Pull the top end up to loosen the strap **D**.
- Repeat this procedure to loosen the other shoulder strap.

**PLEASE NOTE:** After adjusting the restraint system to fit your child, make sure you pull on it to be sure it is securely fastened.





# mockingbird

Mockingbird, 1841 Broadway, Suite 300, New York, NY 10023

Model 2567-BRD-US | Version 1

**[hellomockingbird.com/contact](https://hellomockingbird.com/contact)**