



Lifted Made

Sample 226-082721-139

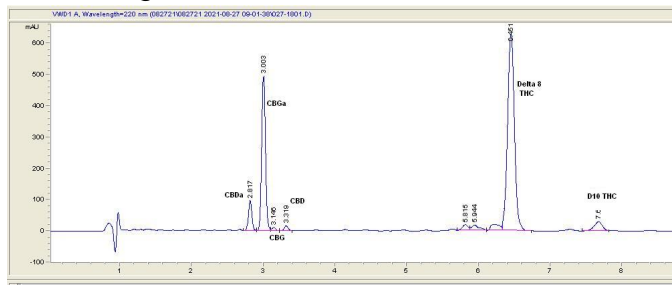
Guava Kush

Sample Submitted: 08-27-2021; Report Date: 08-30-2021

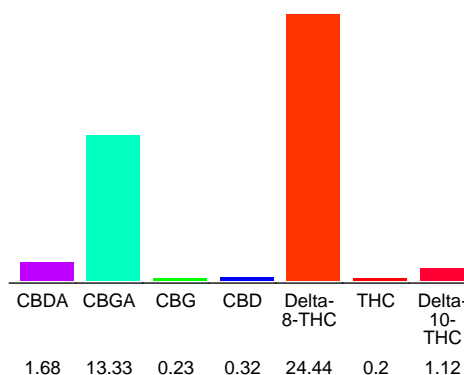
## Guava Kush

Plant Material: Flower

### Chromatogram



### Cannabinoid Profile



### Cannabinoid Profile by HPLC

**0.20%**  
Calculated THC Yield

**1.79%**  
Calculated CBD Yield

**41.32%**  
Total Cannabinoids

| Cannabinoid                 | % wt         | mg/g         |
|-----------------------------|--------------|--------------|
| CBDA                        | 1.68         | 16.8         |
| CBGA                        | 13.33        | 133.3        |
| CBG                         | 0.23         | 2.3          |
| CBD                         | 0.32         | 3.2          |
| Delta-8-THC                 | 24.44        | 244.4        |
| THC                         | 0.2          | 2.0          |
| Delta-10-THC                | 1.12         | 11.2         |
| <b>Total Cannabinoids</b>   | <b>41.32</b> | <b>413.2</b> |
| <b>Calculated THC Yield</b> | <b>0.20</b>  | <b>2.00</b>  |
| <b>Calculated CBD Yield</b> | <b>1.79</b>  | <b>17.93</b> |

Calculated Maximum THC Yield = THC + 0.877 \* THCA  
Calculated Maximum CBD Yield = CBD + 0.877 \* CBDA

### Marin Analytics, LLC

250 Bel Marin Keys Blvd, Suite D4  
Novato, CA 94949

415-936-6477 / sarabiancalana1@gmail.com

**Sara Biancalana**  
Chief Scientist

This sample has been tested by Marin Analytics, LLC using valid testing methodologies and a quality system. Values reported relate only to the sample tested. Marin Analytics, LLC makes no claims as to the efficacy, safety or other risks associated with any detected or non-detected levels of any compounds reported herein. This Certificate shall not be reproduced except in full, without the written approval of Marin Analytics, LLC.