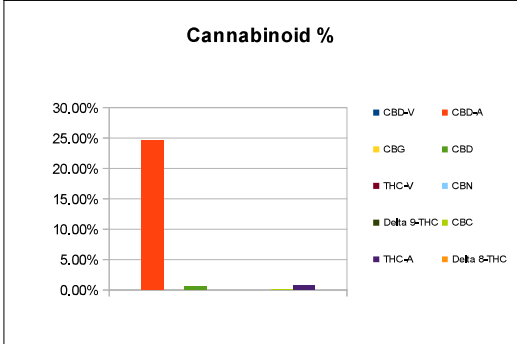


**Industrial Hemp.**  
For Informational Purposes Only.  
Not For Regulatory Purposes.

Sample Information		
Sample Identification	Cherry Wine	
Laboratory Number	2019000449	
Batch Number	HLCW1901	
Matrix	Flower	
Analyzed Date	01/08/19	
Extraction Date	01/08/19	
Cannabinoid (HPLC)	%	mg/g
Compound		
CBD-V	ND	ND
CBD-A	24.54%	245.38
CBG	ND	ND
CBD	0.52%	5.22
THC-V	ND	ND
CBN	ND	ND
Delta 9-THC	ND	ND
CBC	0.16%	1.64
THC-A	NA	NA
Delta 8-THC	ND	ND
Cannabinoids Total		
Total Delta 9-THC	ND	ND
Total CBD	22.11%	221.15
T. Active Cannabinoids	0.69%	6.85
Total Cannabinoids	25.93%	259.34

Max Active Ratios		
35.3 :1 CBD to THC		
0.0 :1 THC to CBD		



**Sample Image**

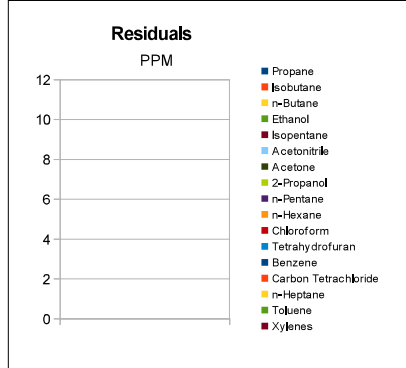
**No Image Available**

**Micro Visual:** NT

**Percent Moisture**

NT

RS (GCMS-HS)	PPM	RL
Compound		
Propane	NT	5.0
Isobutane	NT	5.0
n-Butane	NT	5.0
Ethanol	NT	5.0
Isopentane	NT	5.0
Acetonitrile	NT	5.0
Acetone	NT	50.0
2-Propanol	NT	5.0
n-Pentane	NT	5.0
n-Hexane	NT	5.0
Chloroform	NT	5.0
Tetrahydrofuran	NT	5.0
Benzene	NT	5.0
Carbon Tetrachloride	NT	5.0
n-Heptane	NT	5.0
Toluene	NT	5.0
Xylenes	NT	10.0



<b>g/medible</b>	NA
<b>mg THC/medible</b>	NA
<b>mg CBD/medible</b>	NA
<b>(mg) total cannabinoids/medible</b>	NA

Metals	PPM	RL
Compound		
Lead	NT	0.010
Arsenic	NT	0.010
Cadmium	NT	0.010
Mercury	NT	0.001

RL=Reporting Limit  
NA=Not Applicable  
NT=Not Tested  
ND=Non Detected



Terpene (GC-MS)	%	mg/g
Compound		
alpha-Pinene	NT	NT
Camphene	NT	NT
Sabinene	NT	NT
beta-Myrcene	NT	NT
Beta-Pinene	NT	NT
p-mentha-1-5-diene	NT	NT
(1S)-(+)-3-Carene	NT	NT
Alpha-Terpinene	NT	NT
Ocimene Isomer 1	NT	NT
(R)-(+)-Limonene	NT	NT
Ocimene Isomer2	NT	NT
Eucalyptol (1,8-Cineole)	NT	NT
gamma-Terpinene	NT	NT
Sabinene Hydrate	NT	NT
Terpinolene	NT	NT
Linalool	NT	NT
(+)-Fenchone and L(-)-Fenchone	NT	NT
1R)-Endo-(+)-Fenchyl	NT	NT
(-)-Isopulegol	NT	NT
Camphor	NT	NT
Isoborneol	NT	NT
Hexahydrothymol	NT	NT
(+)-Borneol and (-) Borneol	NT	NT
alpha-Terpineol	NT	NT
gamma-Terpineol	NT	NT
Nerol	NT	NT
Geraniol	NT	NT
(+) -Pulegone	NT	NT
Geranyl Acetate	NT	NT
alpha-Cedrene	NT	NT
trans- Caryophyllene	NT	NT
alpha-Humulene	NT	NT
Valencene	NT	NT
cis-Nerolidol	NT	NT
trans-Nerolidol	NT	NT
Guaiol	NT	NT
(-)-Caryophyllene Oxide	NT	NT
(+)-Cedrol	NT	NT
(-)-alpha-Bisabolol	NT	NT
<b>Total Terpenes</b>	NT	NT

