

Note Name

Flashcards



Note Name Flashcards

by Denise Gagné

38 Flashcards

Bass Clef and Treble Clef notes. One Side - Note Only. Other Side - Note with Letter Name.



Saves You Hours Of Work - Just Cut & Use!

To get your *Download Edition for Note Name Flashcards*,
visit <https://downloads.musicplay.ca/> and type in the download code below.
If the code is covered scratch the silver label below.

DOWNLOAD CODE:

This product is intended for the purchaser. No other copying is permitted.

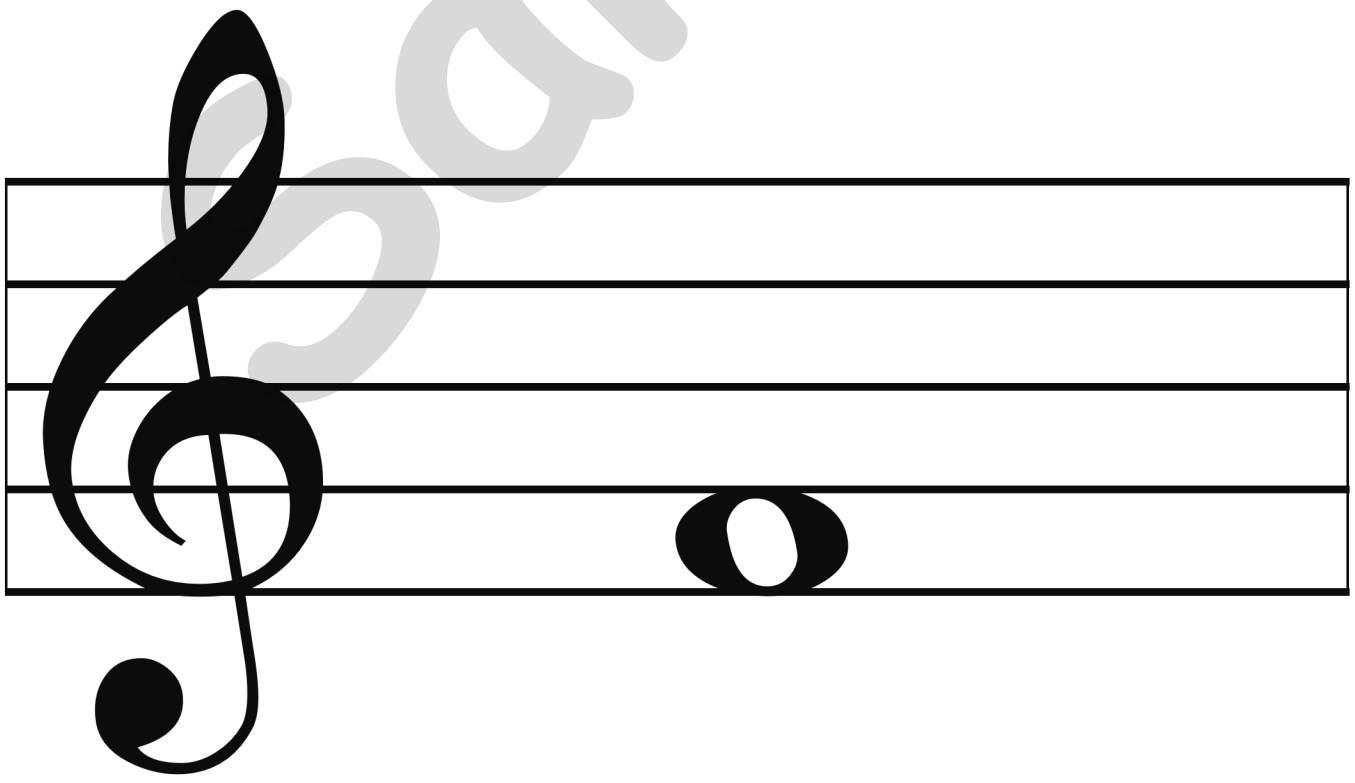
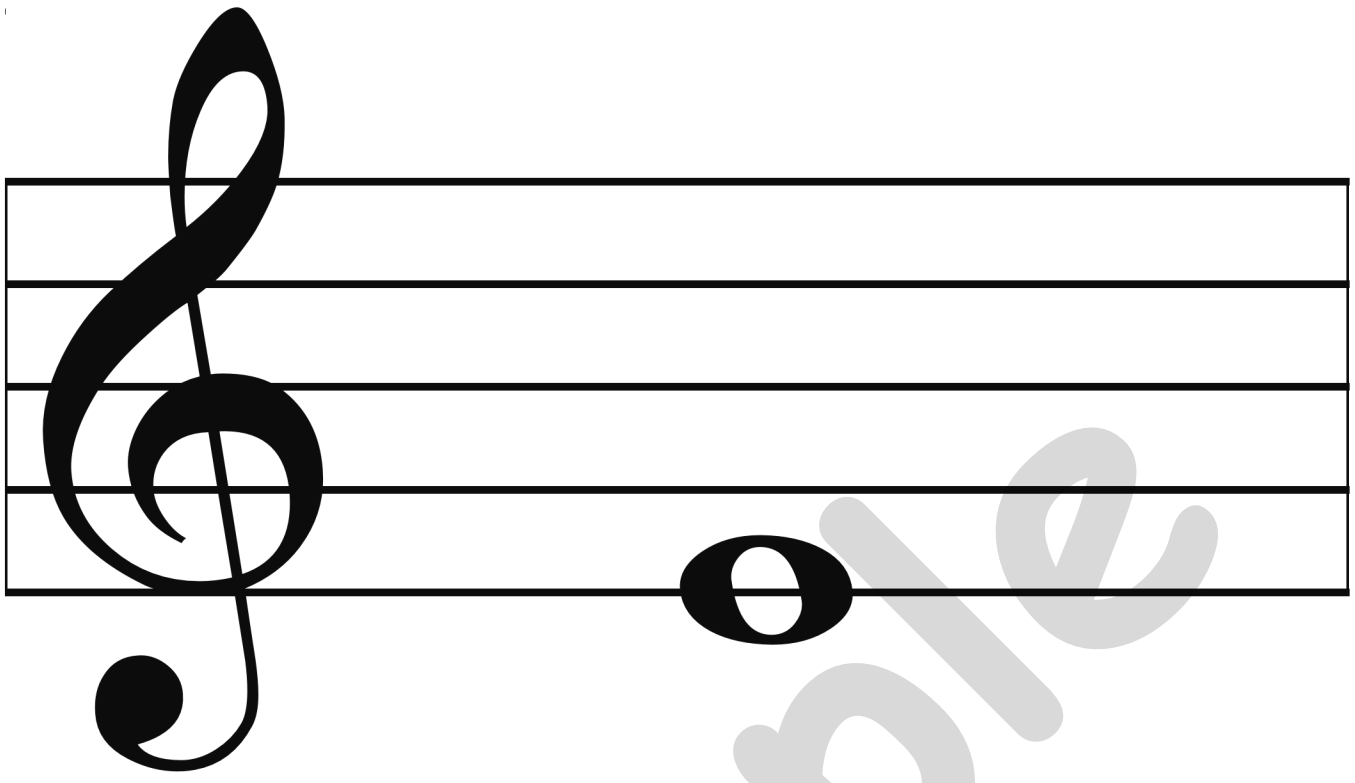
ISBN# 978-1-897099-43-8 Print Edition
©2005 Themes & Variations. Reprinted 2023.
Printed in Canada. All Rights Reserved.

©Themes & Variations

1-888-562-4647 sales@musicplay.ca www.musicplay.ca
#3 4664 Riverside Drive - Red Deer, AB T4N 6Y5 - Canada

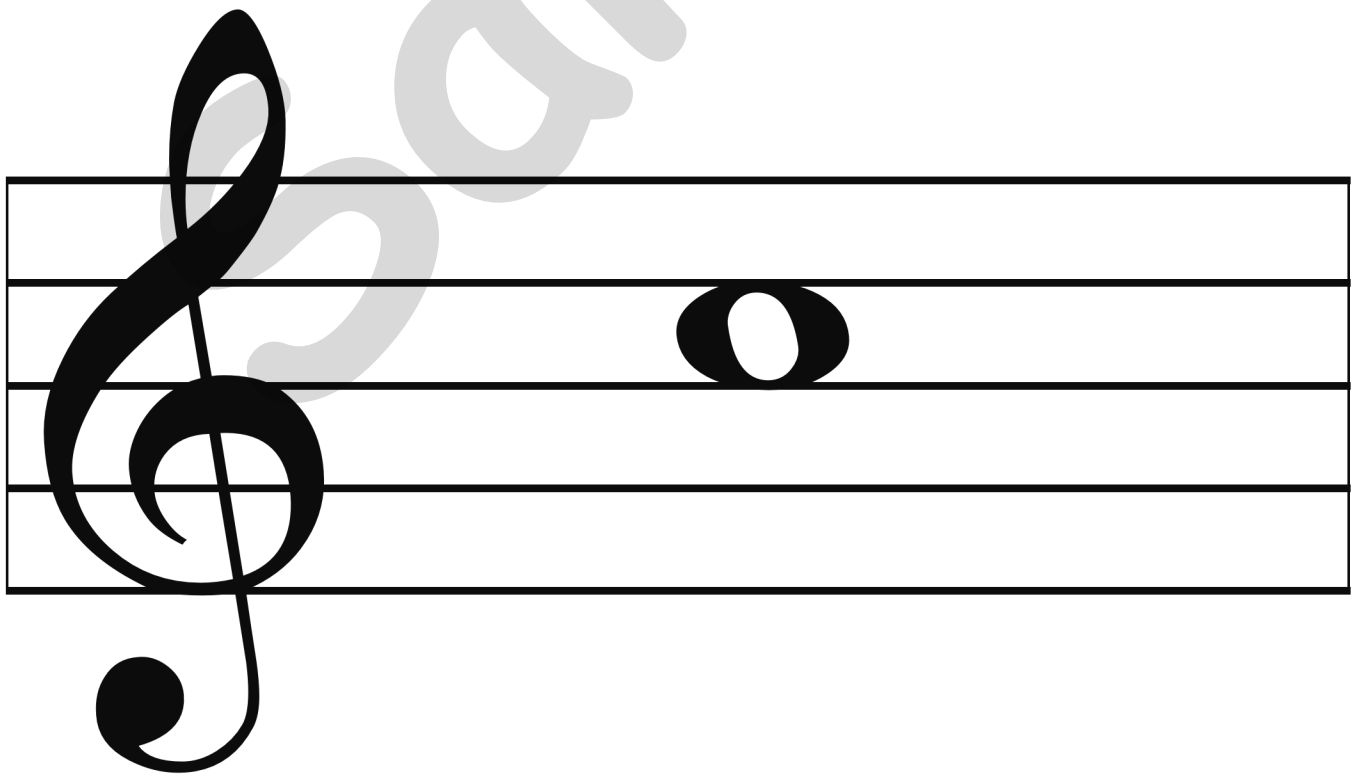
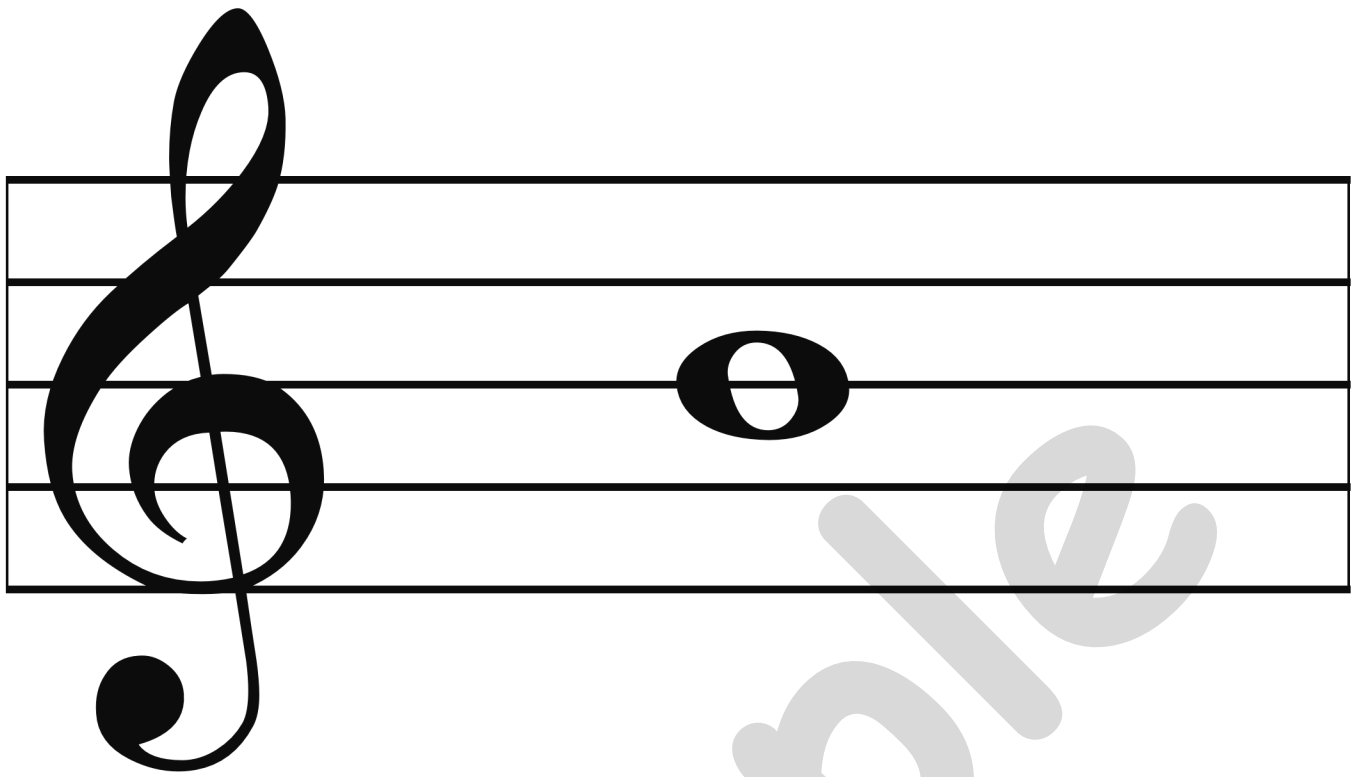
Canada

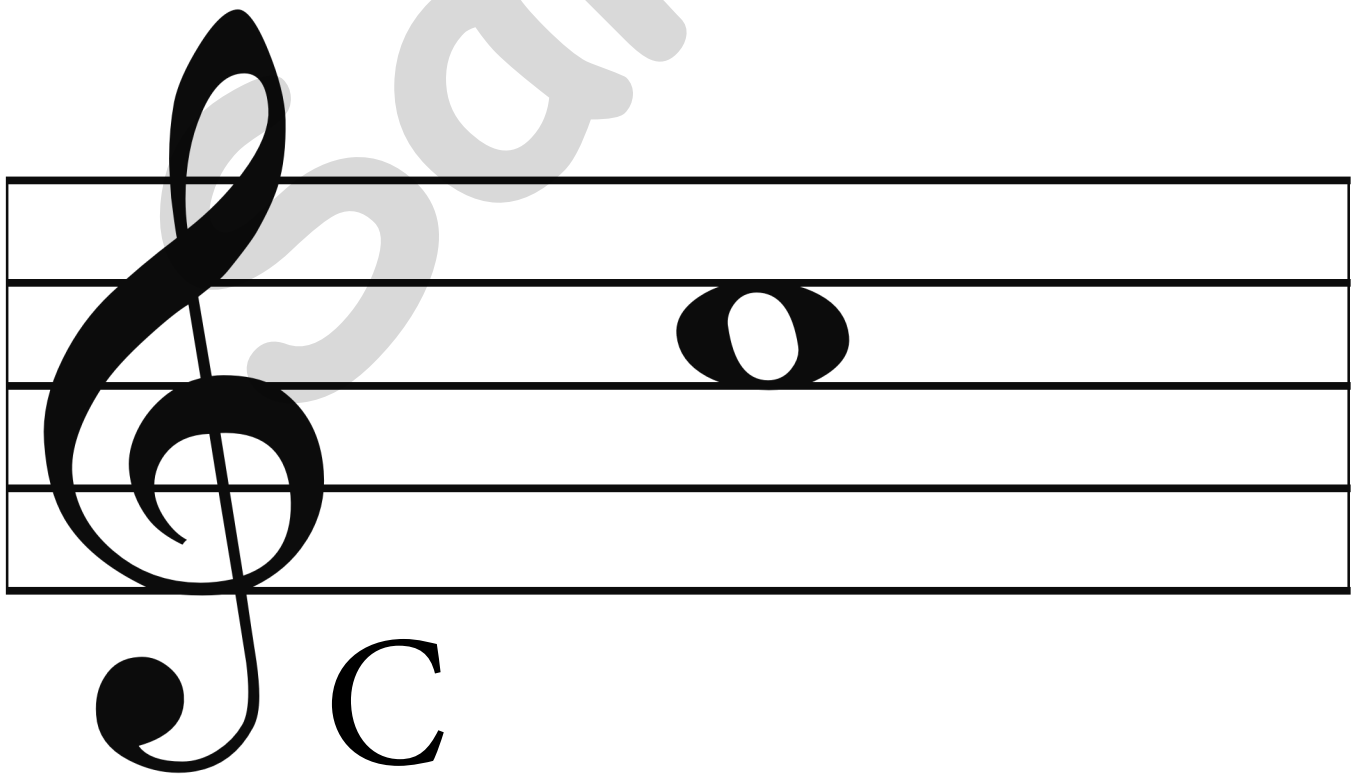
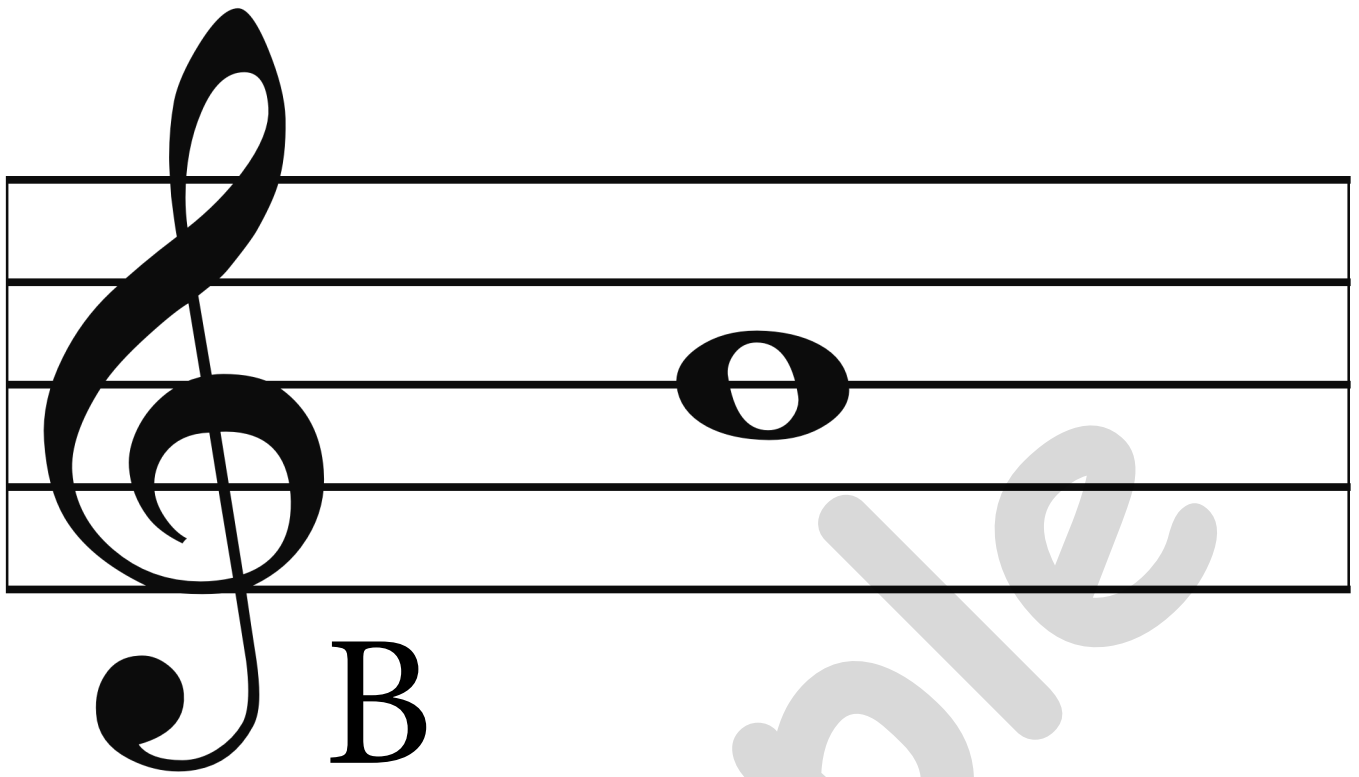
With the participation of the
Government of Canada.

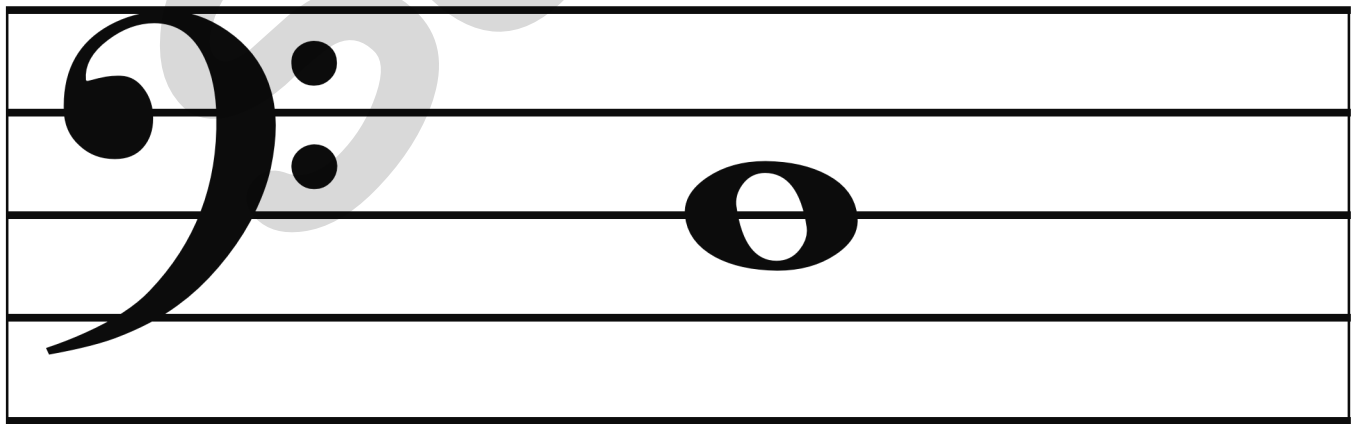
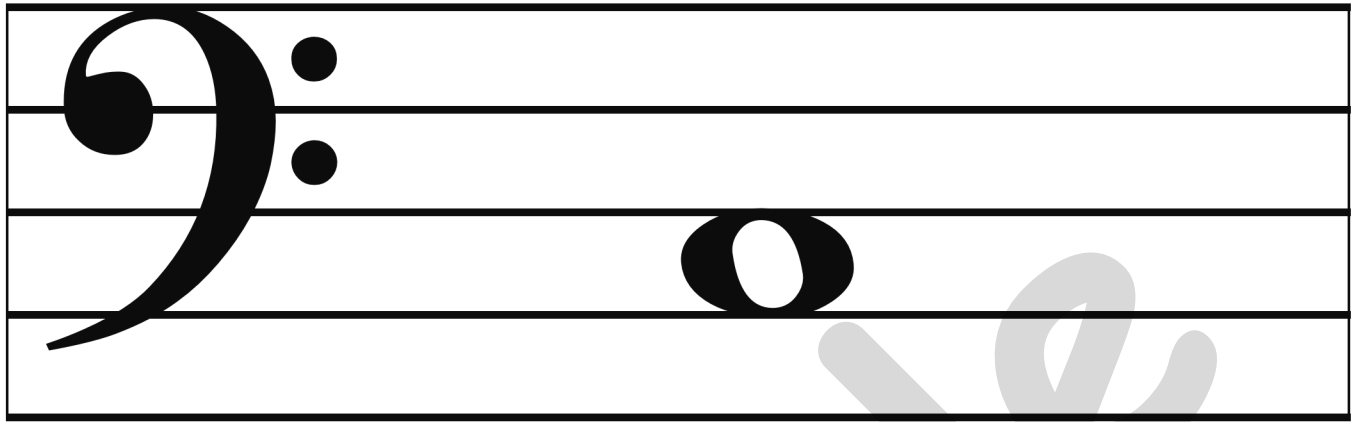


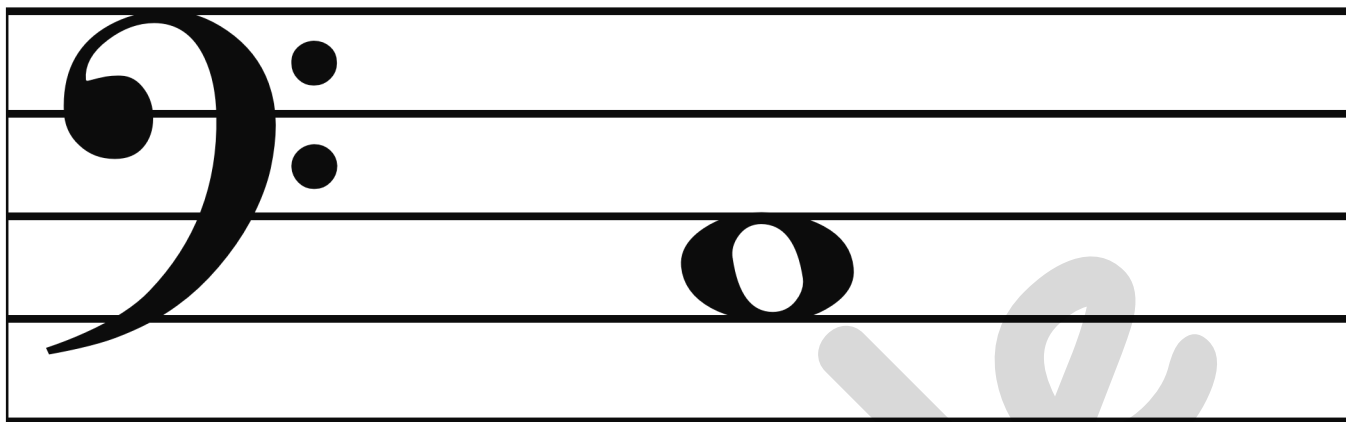
A musical staff with a treble clef. A whole note is placed on the second line from the bottom. Below the staff, the letter 'E' is written in a large, bold, serif font.

A musical staff with a treble clef. A whole note is placed on the first space from the bottom. Below the staff, the letter 'F' is written in a large, bold, serif font.

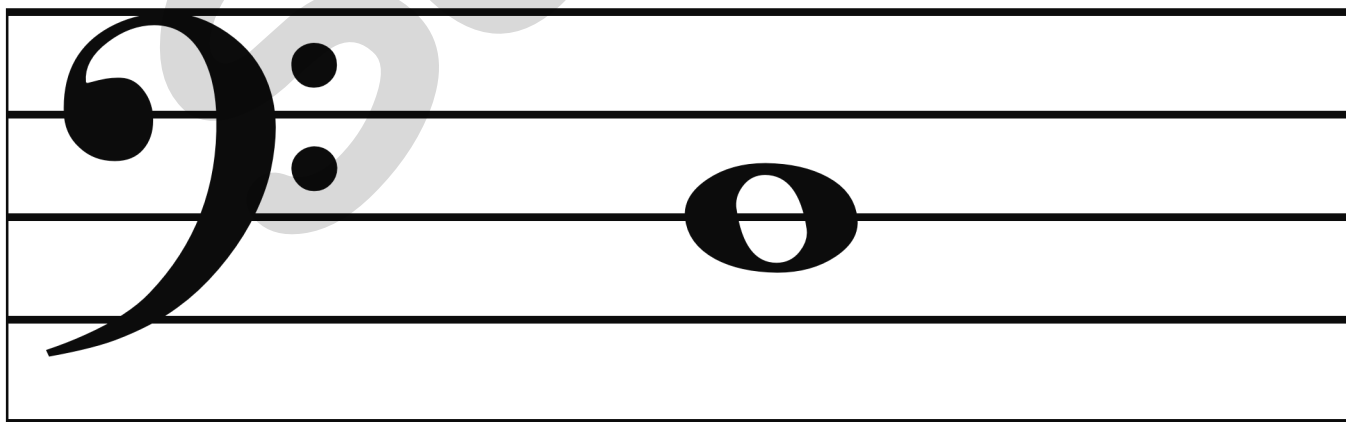




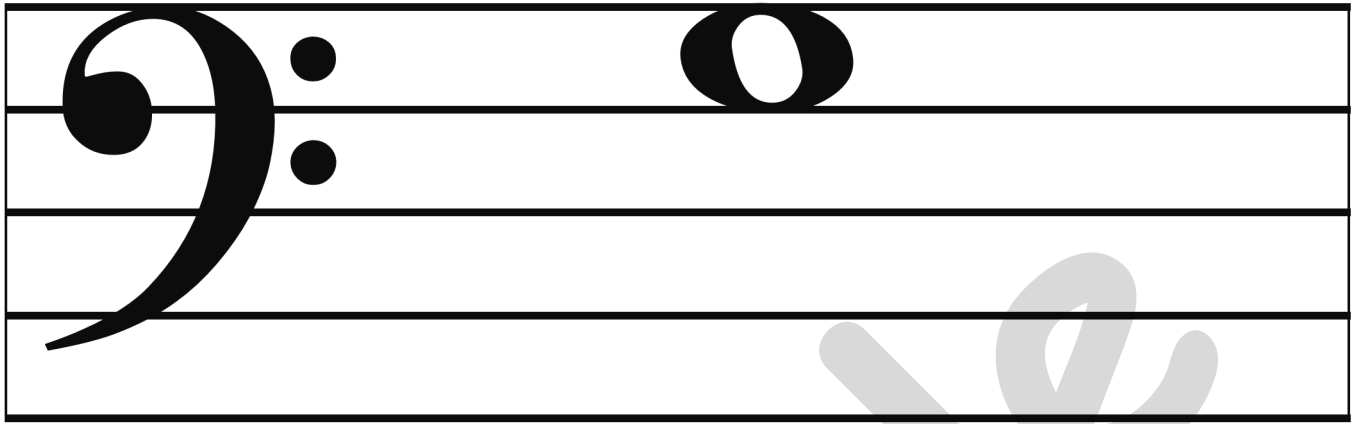


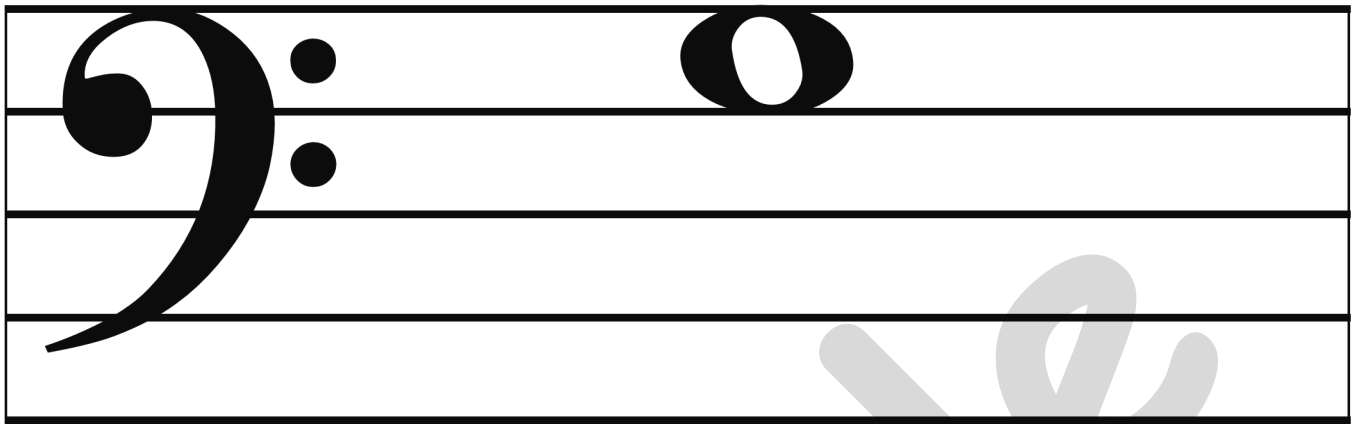


C



D

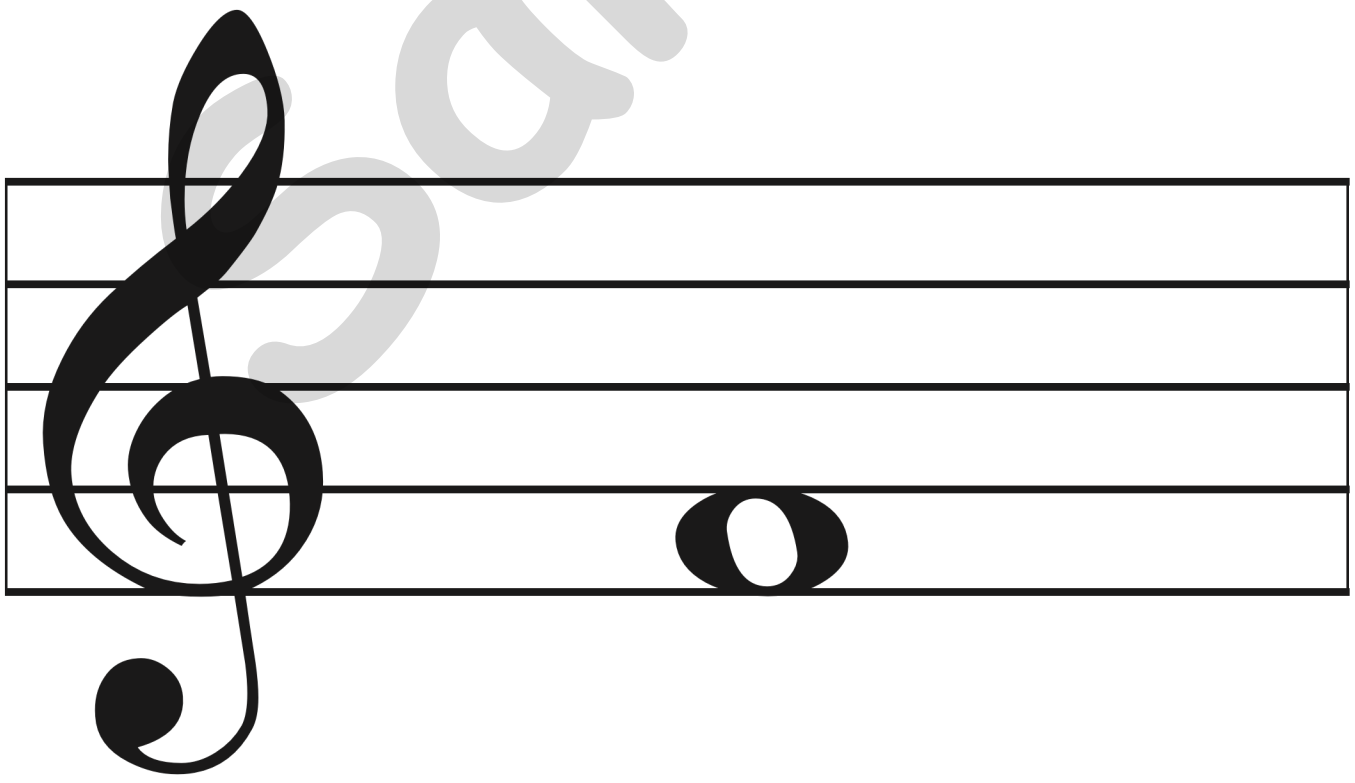
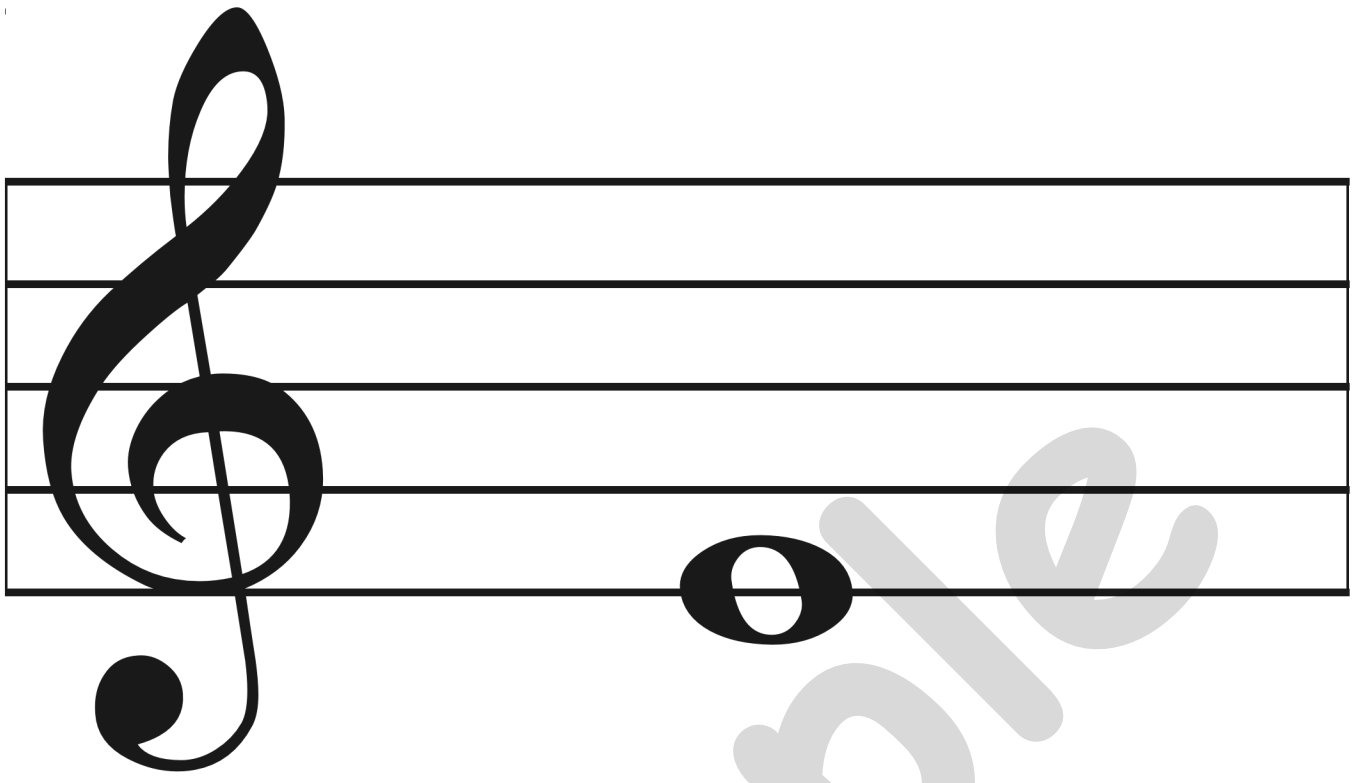




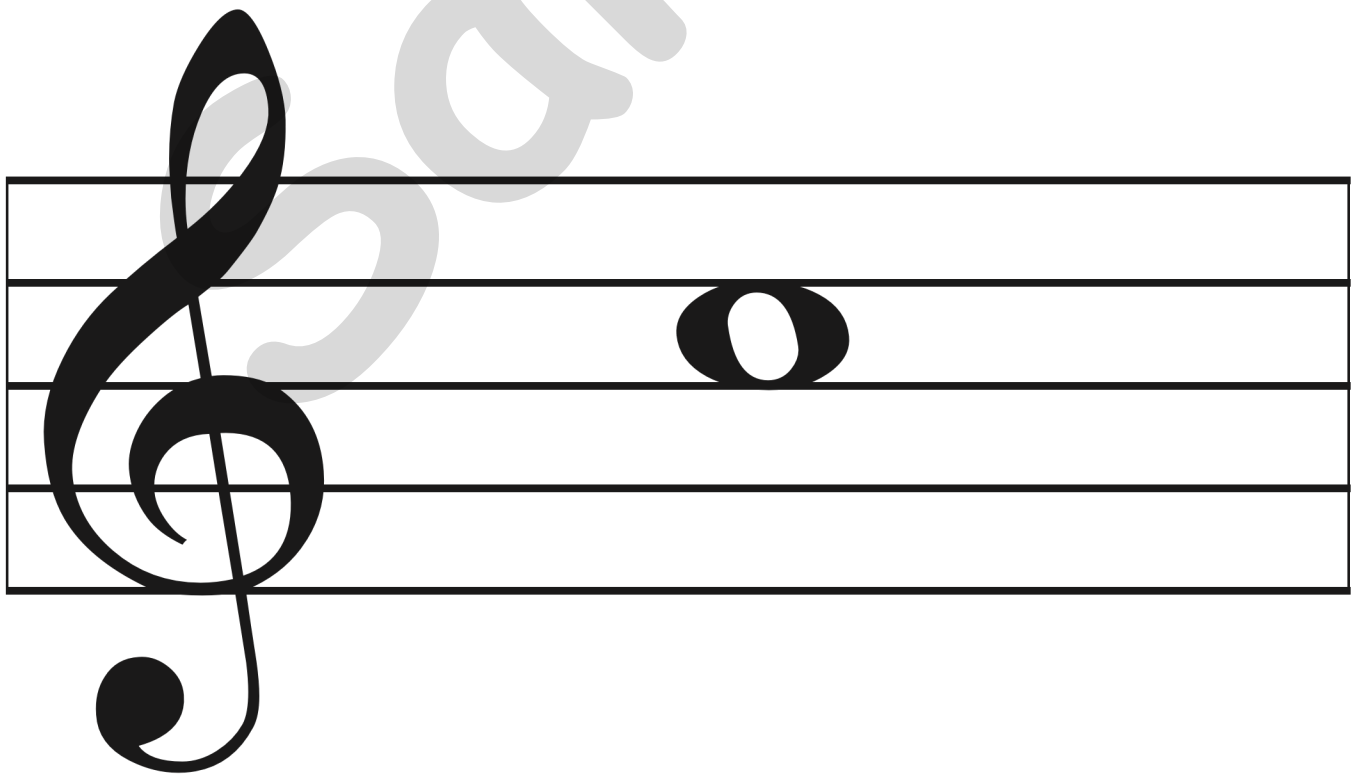
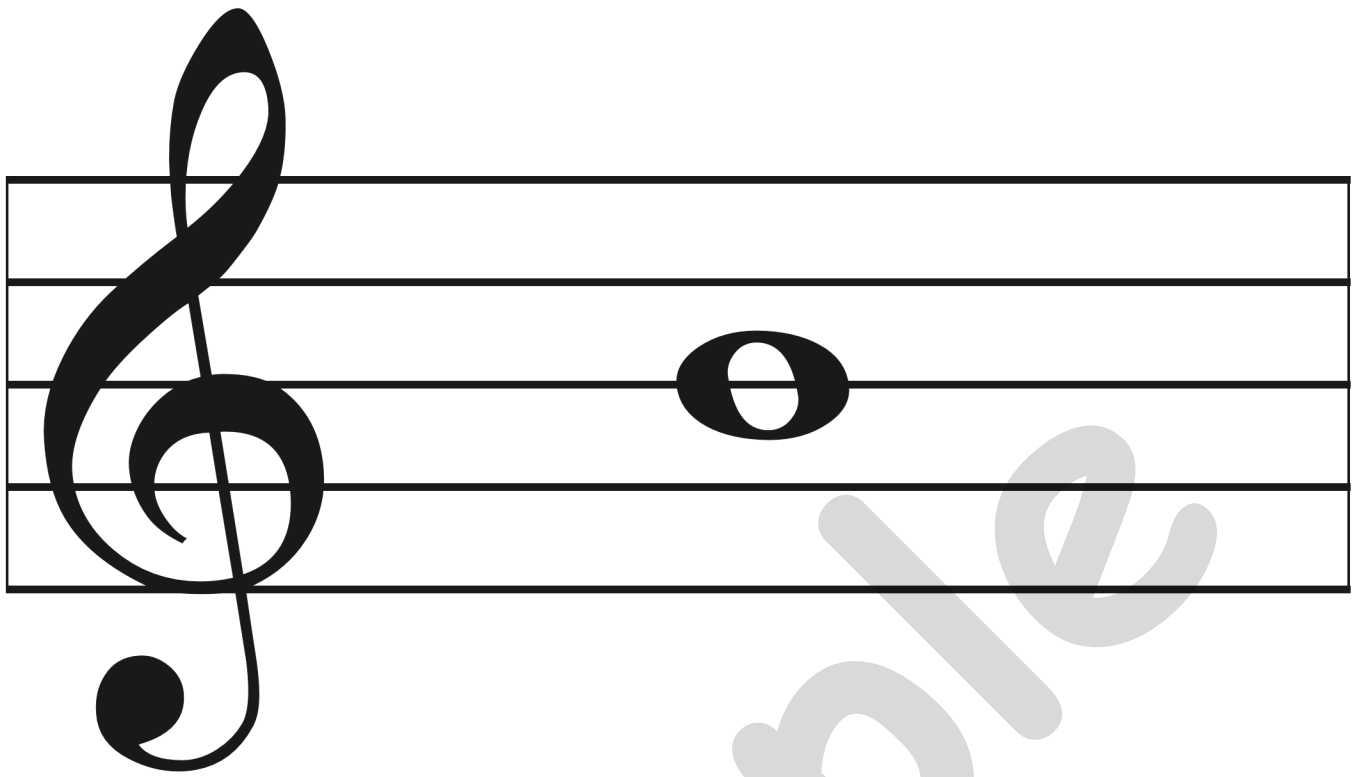
G

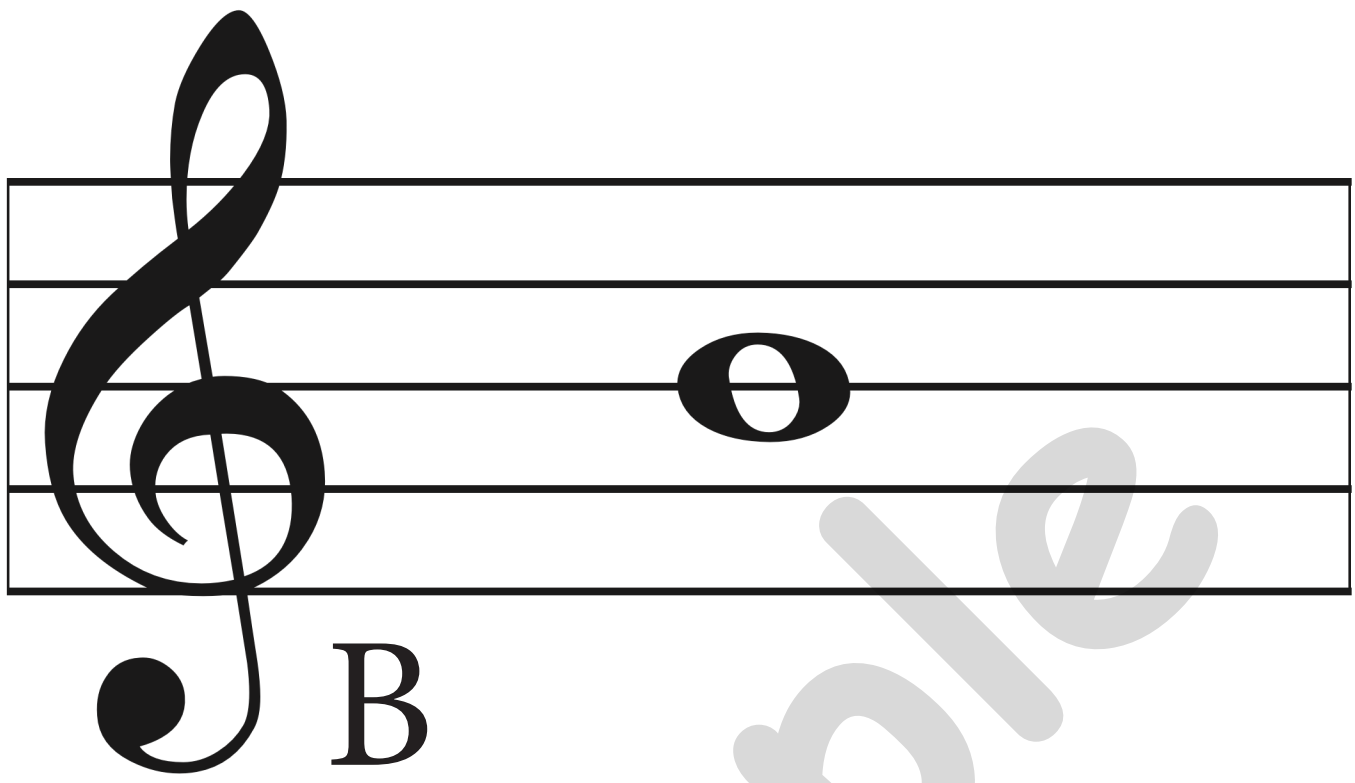


A

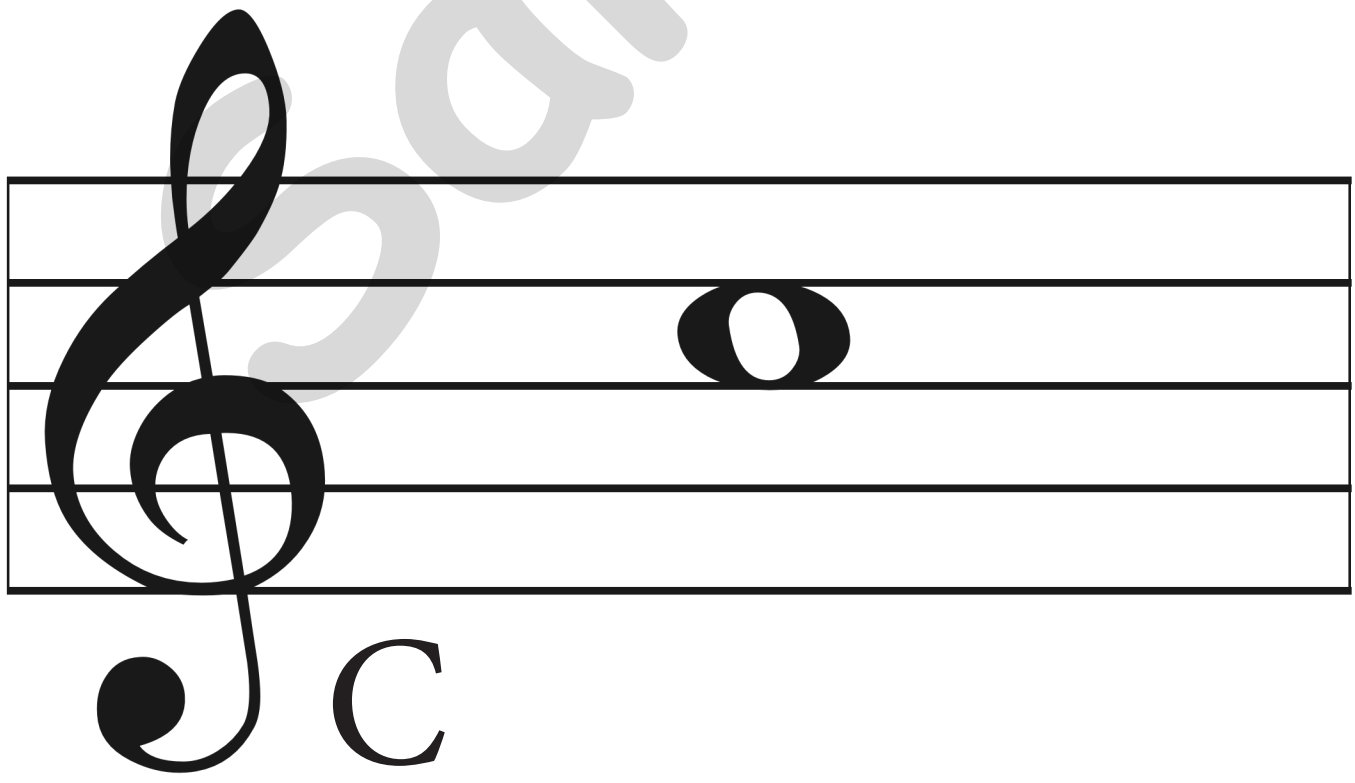




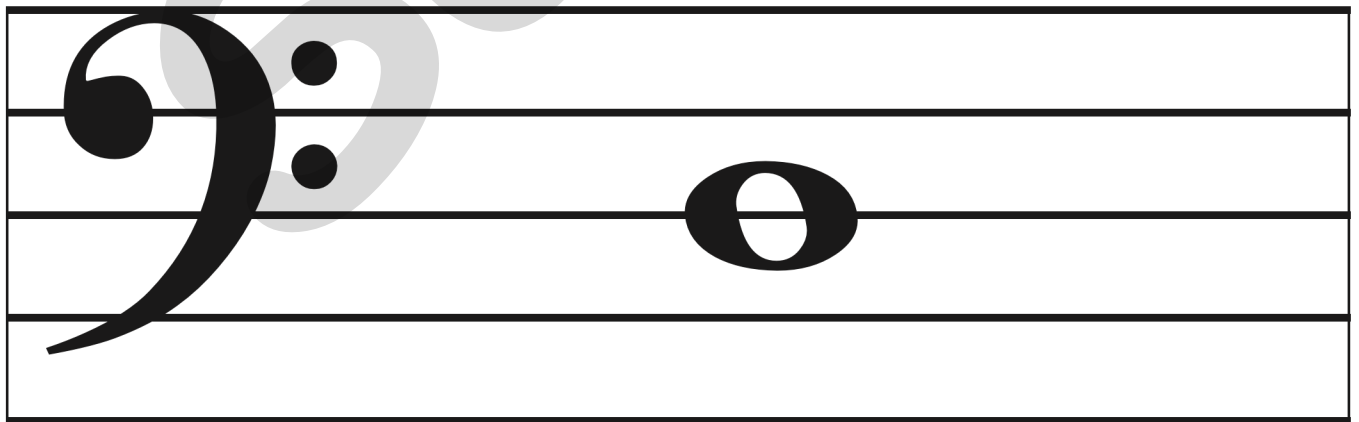
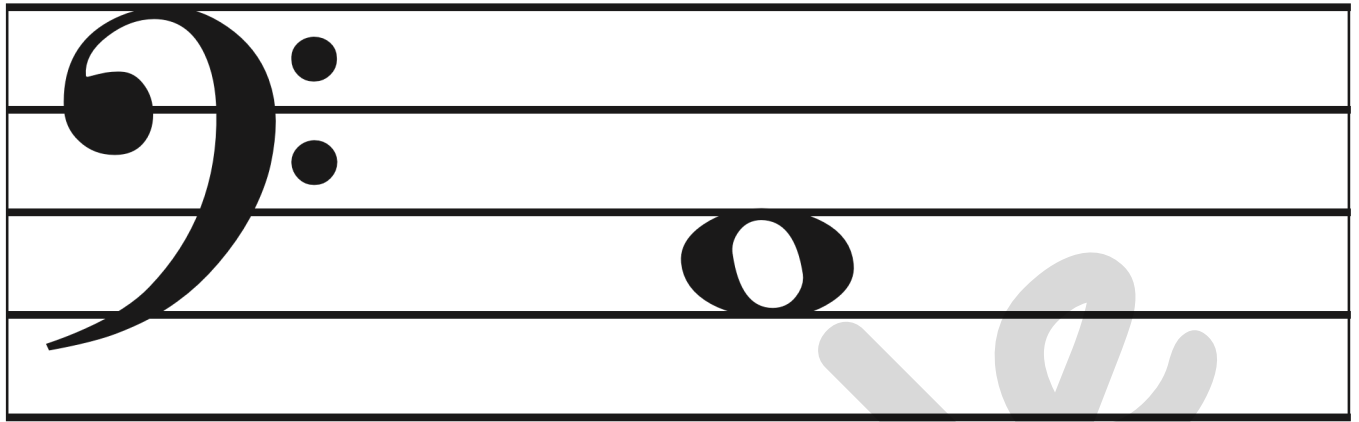


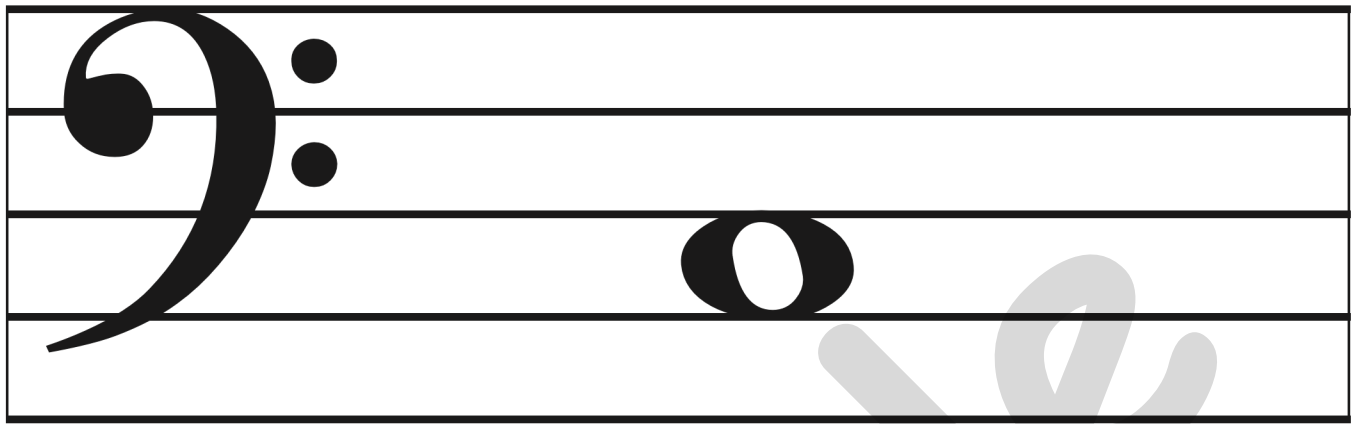


A musical staff with a treble clef. A whole note is placed on the second line of the staff. Below the staff, the letter 'B' is written in a large, black, serif font.

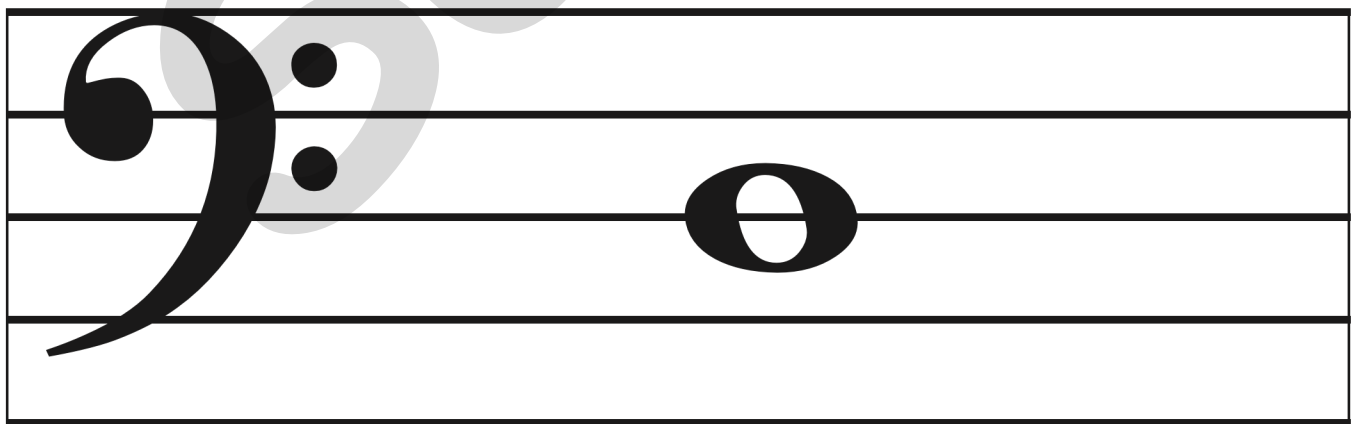


A musical staff with a treble clef. A whole note is placed on the first line of the staff. Below the staff, the letter 'C' is written in a large, black, serif font.

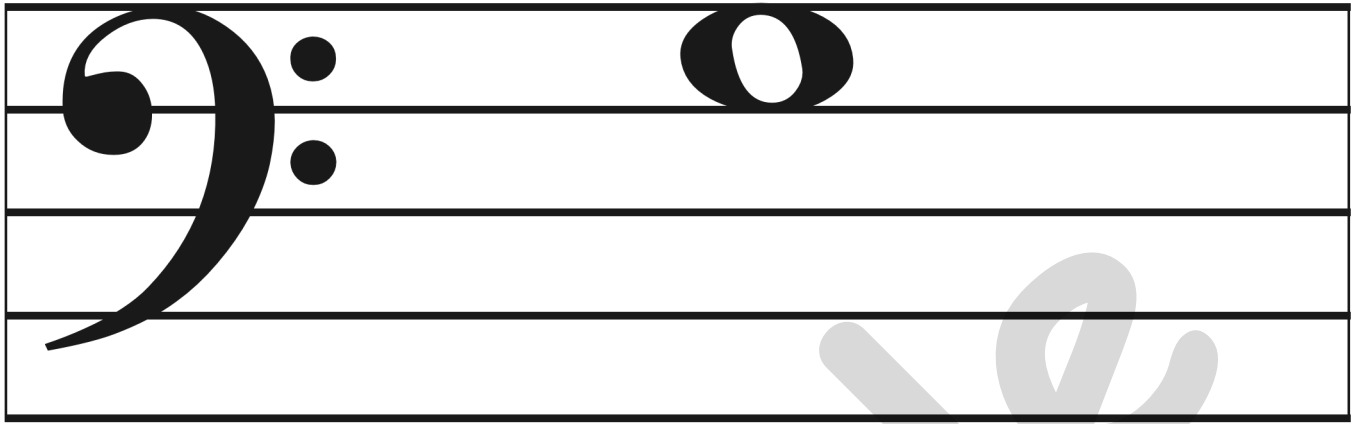


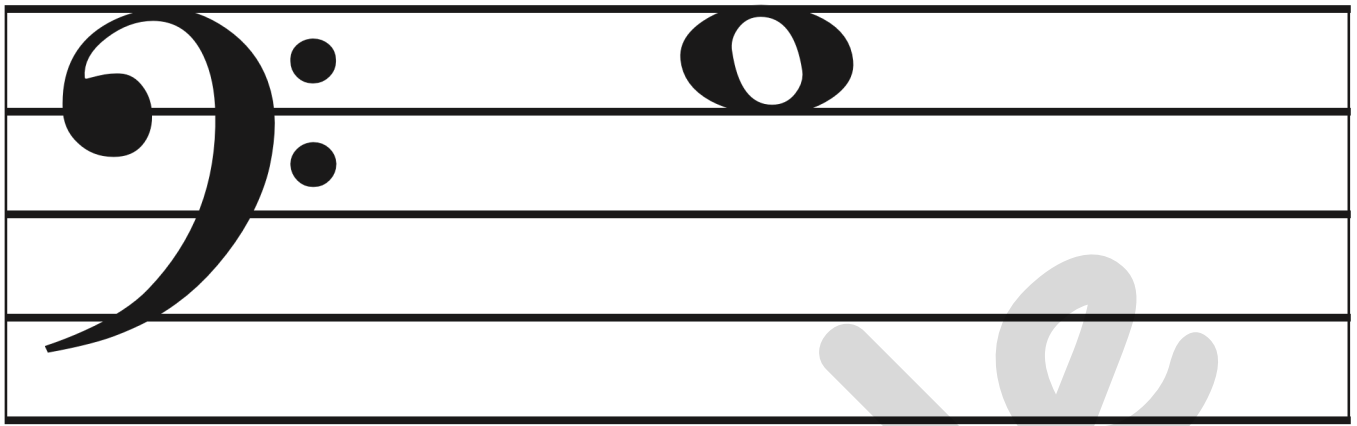


C

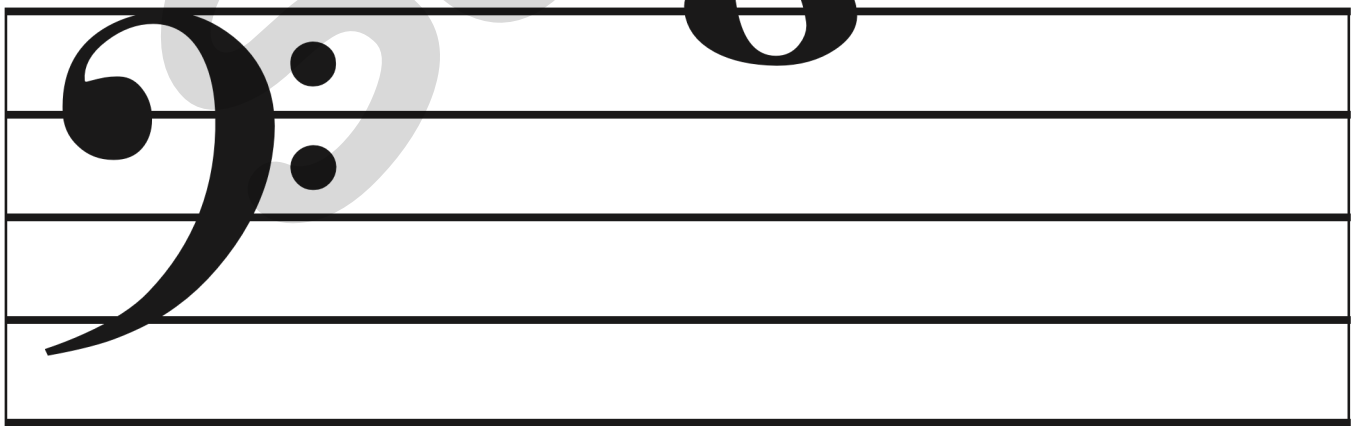


D





G



A