

# 8. Ickle Ockle



# 8. Ickle Ockle



I s m  
A G E

Traditional



Ick - le ock - le blue bot - tle, fish - es in the sea.



If you want a hand - some fish, just choose me!



# 8. Ickle Ockle

Ickle ockle blue bottle,  
fishes in the sea.

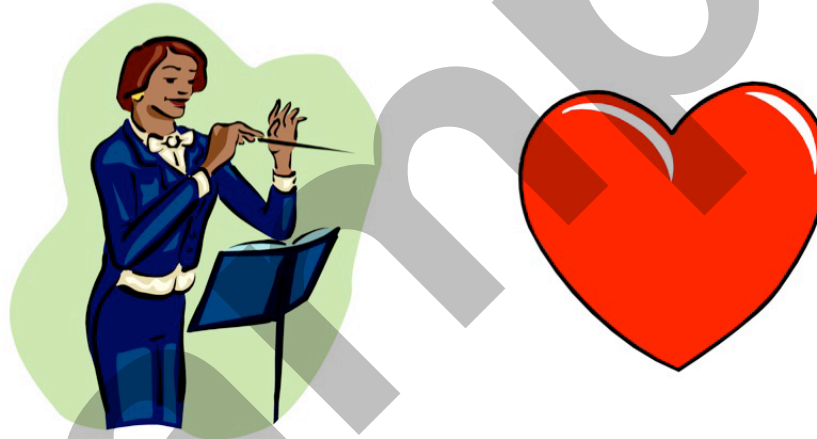
If you want a handsome fish,  
just choose me!

*(Repeat)*



# Beat

Most music has a steady beat, or pulse that you can feel, step, clap or dance to.



Pat the beat or conduct while you sing *Ickle Ockle*. Try this with some of the other songs you have learned.

# Rhythm

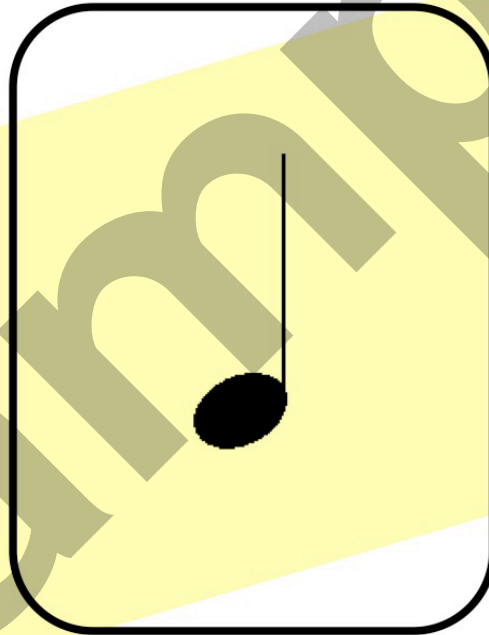
The way the words “go,” or the sounds that the words make, is the rhythm of the song.



Put the rhythm of *Ickle Ockle*  
in your hands.

# Quarter Note

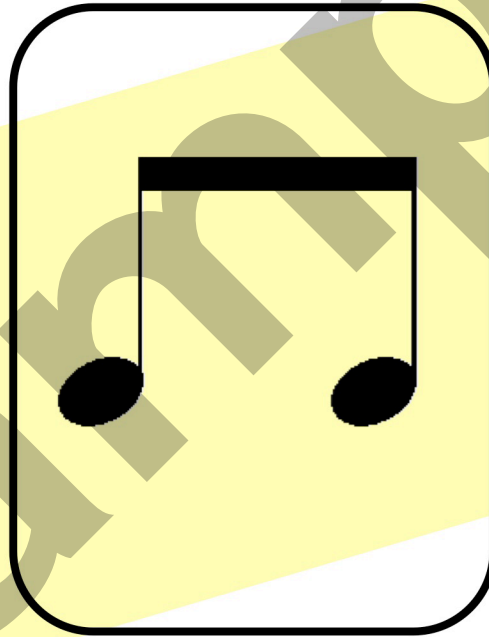
One sound on a beat is called *ta*:



*This is called a quarter note.*

# Eighth Notes

Two sounds on a beat is called *ti-ti*:



*These are eighth notes.*

# Rest

A silent beat is a *rest*:



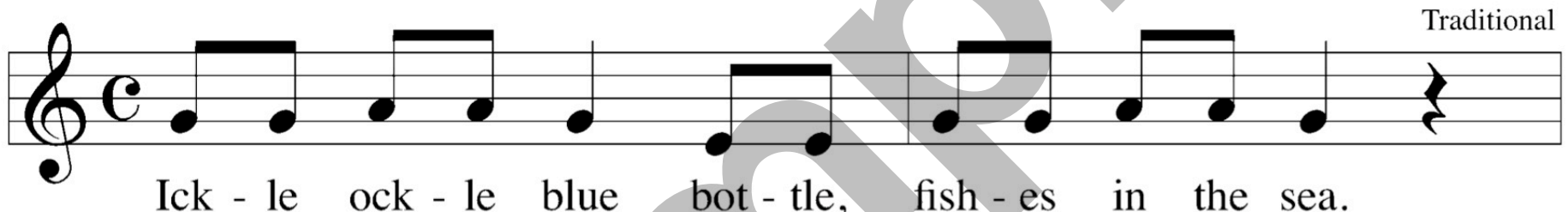
*This is a quarter rest.*



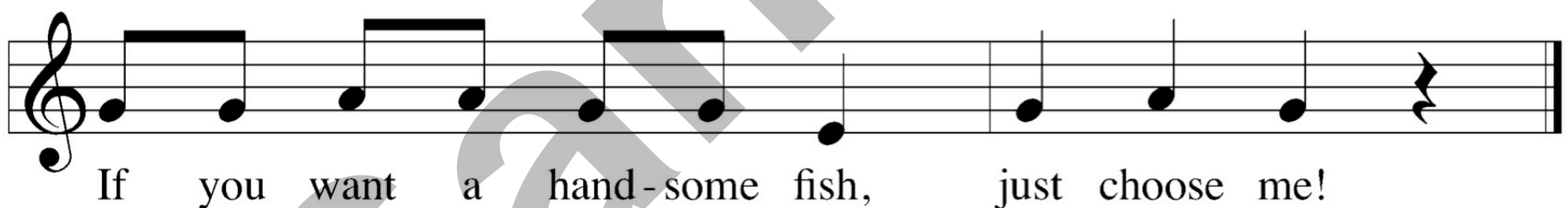
# Rest

Circle the rests in *Ickle Ockle*:

Traditional



Ick - le ock - le blue bot - tle, fish - es in the sea.

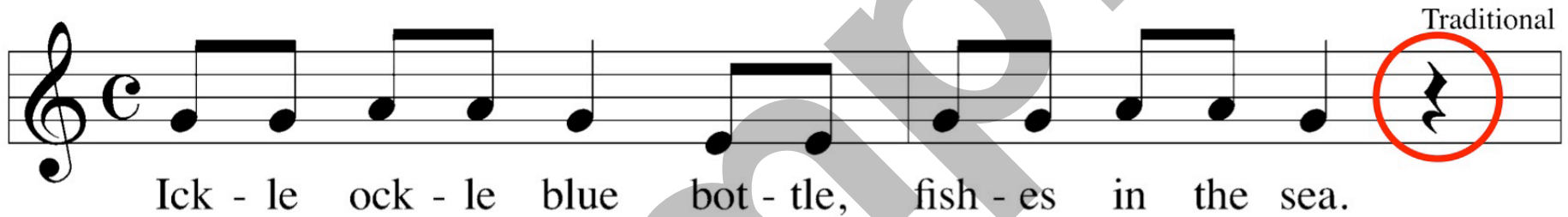


If you want a hand - some fish, just choose me!

The image shows two staves of music in treble clef with a common time signature (C). The first staff contains the lyrics 'Ick - le ock - le blue bot - tle, fish - es in the sea.' and ends with a fermata. The second staff contains the lyrics 'If you want a hand - some fish, just choose me!' and also ends with a fermata. A large, faint watermark 'SAMPLE' is overlaid diagonally across the page.

# Rest

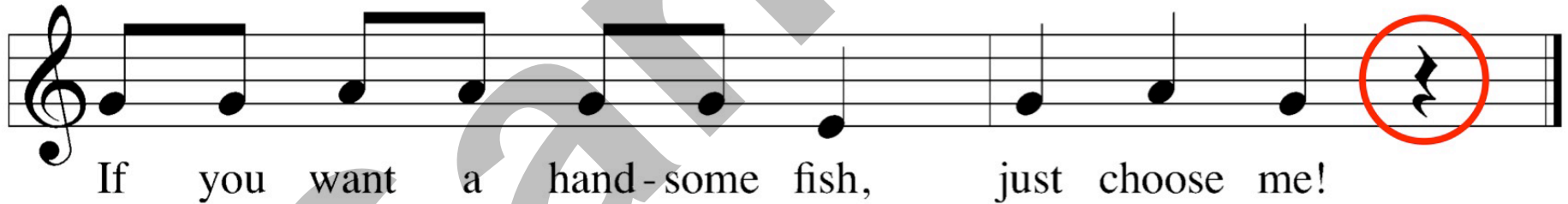
Circle the rests in *Ickle Ockle*:



Traditional

Ick - le ock - le blue bot - tle, fish - es in the sea.

The first musical staff shows the melody for 'Ickle Ockle'. It is written in treble clef with a common time signature. The notes are: quarter note G4, quarter note A4, quarter note B4, quarter note C5, quarter note B4, quarter note A4, quarter note G4, quarter note F4, quarter note E4, quarter note D4. A whole rest is circled in red at the end of the staff.



If you want a hand - some fish, just choose me!

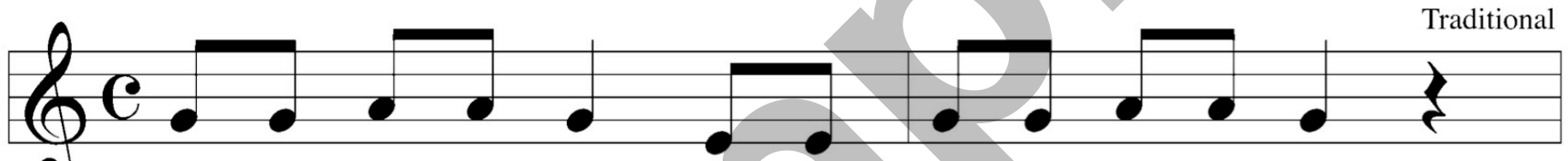
The second musical staff shows the melody for 'If you want a handsome fish, just choose me!'. It is written in treble clef with a common time signature. The notes are: quarter note G4, quarter note A4, quarter note B4, quarter note C5, quarter note B4, quarter note A4, quarter note G4, quarter note F4, quarter note E4, quarter note D4. A whole rest is circled in red at the end of the staff.

Sample

**Answer**

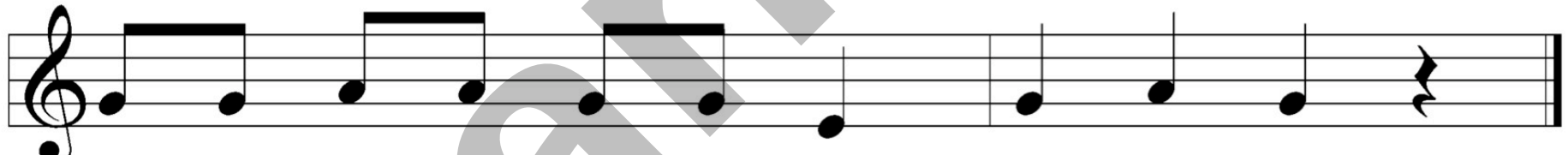
# Sing the rhythm names in *Ickle Ockle.*

Traditional



Ick - le ock - le blue bot - tle, fish - es in the sea.

The first line of music is written on a single staff in treble clef with a common time signature (C). It consists of eight measures. The first four measures correspond to the lyrics 'Ick - le ock - le blue' and the last four to 'bot - tle, fish - es in the sea'. The melody is simple, using quarter and eighth notes. The piece ends with a double bar line and repeat dots.



If you want a hand - some fish, just choose me!

The second line of music is written on a single staff in treble clef with a common time signature (C). It consists of eight measures. The first four measures correspond to the lyrics 'If you want a hand - some fish,' and the last four to 'just choose me!'. The melody is simple, using quarter and eighth notes. The piece ends with a double bar line and repeat dots.

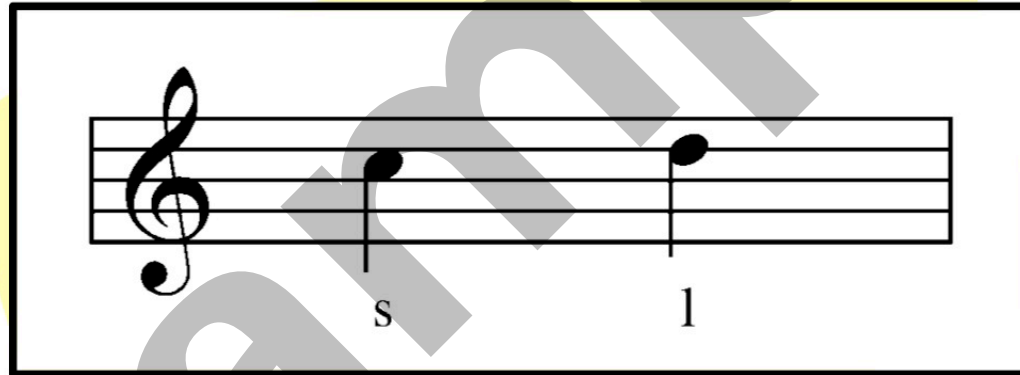
# *La*

*La (l)* is the solfa note just above *so (s)*.

A musical staff in treble clef showing three notes: 'l', 's', and 'm'. The 'l' note is on the second line, 's' is on the second space, and 'm' is on the first space. A red dashed box encloses the 'l' note. A red arrow points from the 'l' note to a box containing the text *la (l)*.

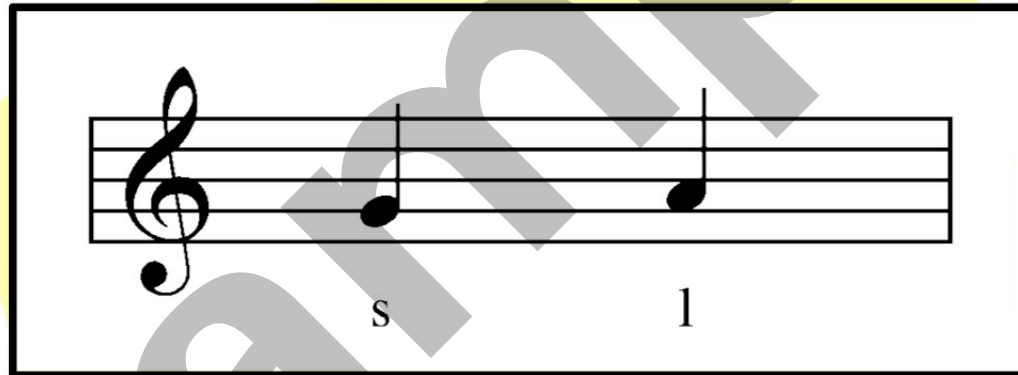
# *La* on a line

If *so* is in a space, *la* is found on the line just above.



# *La* in a space

If *so* is on a line, *la* is in the space just above.



# Can you sing *Ickle Ockle* using solfa?

Traditional

s

The image shows two staves of musical notation for the song 'Ickle Ockle'. The first staff is labeled 'Traditional' and contains a melody of eighth notes: G4, A4, B4, C5, B4, A4, G4, F4, E4, D4. A solfa 's' is written below the first note. The second staff is a simplified version of the melody, also in eighth notes: G4, A4, B4, C5, B4, A4, G4, F4, E4, D4. A large 'Sample' watermark is overlaid diagonally across the page.

# Can you sing *Ickle Ockle* using solfa?

Traditional

s s | | s m m s s | | s

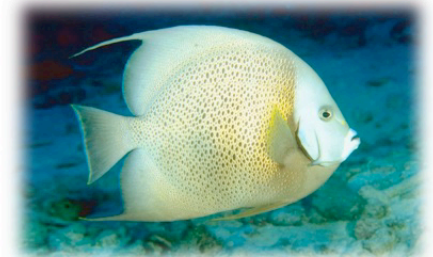
s s | | s s m s | s | s

**Answer**



# Word Chains

Create word chain rhythms using different kinds of fish. Decide how you want to play the word chain rhythm. You could use non-pitched instruments, body percussion or found sounds. Use the word chain rhythm as a B section in a performance of the song.



# 8. Ickle Ockle

Traditional

Ick - le ock - le blue bot - tle, fish - es in the sea.

*Use any two tones, changing each time*

SX-SM

triangle

BX-BM

This block contains the first system of the musical score. It features a vocal line with lyrics, and three accompaniment staves: SX-SM (xylophone), triangle, and BX-BM (bass drum). The music is in common time (C) and consists of six measures. The vocal line has a melodic line with lyrics: "Ick - le ock - le blue bot - tle, fish - es in the sea." The accompaniment staves show rhythmic patterns: SX-SM has rests followed by chords; triangle has eighth notes with accents; BX-BM has pairs of eighth notes.

If you want a hand - some fish, just choose me!

SX-SM

triangle

BX-BM

This block contains the second system of the musical score. It features a vocal line with lyrics, and three accompaniment staves: SX-SM (xylophone), triangle, and BX-BM (bass drum). The music is in common time (C) and consists of six measures. The vocal line has a melodic line with lyrics: "If you want a hand - some fish, just choose me!" The accompaniment staves show rhythmic patterns: SX-SM has rests followed by chords; triangle has eighth notes with accents; BX-BM has pairs of eighth notes.

*No copying or transfer of this PowerPoint is permitted. This PowerPoint is for the use of the original purchaser only and may be installed on only one computer.*

[www.musicplay.ca](http://www.musicplay.ca)

*©2008 Themes & Variations*