

PARMIDA

S M A R T H O M E

5/6" LED SMART DOWNLIGHT

APP INSTALLATION GUIDE



Create and design the perfect ambiance from anywhere you want with the Parmida Smart Home Downlight. Compatible with Alexa and Google Assistant, so you can have complete control over your lighting.



CONTROL FROM ANYWHERE

Control your smart devices remotely, even when you're not home



MULTIPLE DEVICES

Use the app to adjust and control multiple devices at one time



SHARING

Easily share control of your lights with other members of your household



SIMPLE CONNECTION

Quickly and easily sync our app with your devices for fast, effective control



SCHEDULES

Create and control timers and schedules for different lighting functions

STEP 1. DOWNLOAD APP

Scan the QR code or search "Parmida" in your Google Play or App Store to download the App to your phone. Register for an account with your email or phone number.



*Only supported on 2.4GHz Wi-Fi, Android 4.1 or above, iOS 8.0 or above.

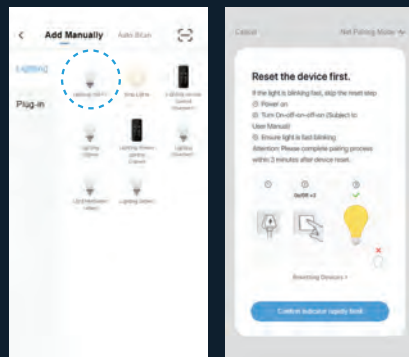
STEP 2. ADD SMART DEVICE

A) Manual Add

- 1) Click **+** at the top right corner of the screen
- 2) Select "Add Device" then select "Lighting (WiFi)"
- 3) Follow instructions on the screen

B) Auto Scan Add

- 1) Click **+** on the top right corner
- 2) Select "Auto Scan" at the top of the screen
- 3) Follow instructions on the screen



REMINDER

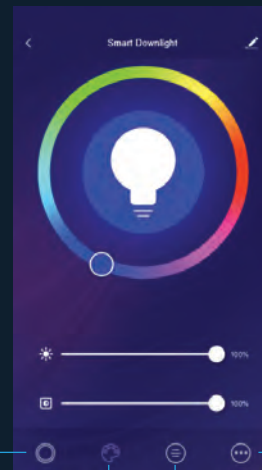
If you have multiple lights in one room, continue to add each light. Once all lights have been added you can connect them together for an all-in-one control.

*When entering Wi-Fi details, ensure you are using the correct letter case.

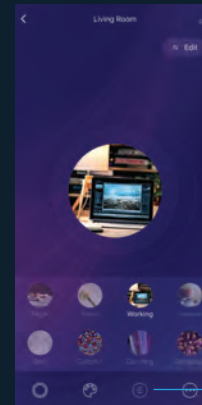


STEP 3. ULTIMATE CUSTOMIZATION

Click into the light you wish to control. Here you can adjust the brightness and customize the color of the light.

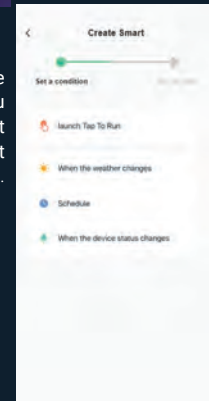


Brightness Color Light Scenes Schedules



Choose from one of many default light scenes based on your mood or activity.

Click 'Smart' in the menu tab. Here you can create and set automatic light schedules.



READ AND FOLLOW BELOW SAFETY INSTRUCTIONS

GENERAL: All electrical connections must be in accordance with local and National Electrical Code (N.E.C) standards. LED Retrofit Kit installation requires knowledge of luminaire electrical systems. If you are unfamiliar with proper electrical wiring connections, obtain the services of a qualified electrician.

1. Do not make or alter any open holes in an enclosure of wiring or electrical components during kit installation.
2. To prevent wiring damage or abrasion do not expose wiring to edges of sheet metal or other sharp objects.
3. Suitable for damp locations.
4. Supply conductors (power wires) connecting the fixture must be rated minimum 90 C. If uncertain consult an electrician.
5. This device is not intended for use with emergency exits.

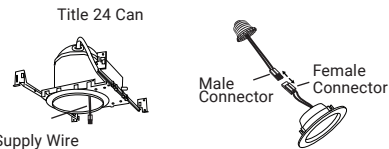
NOTE: This device complies with part 15 of the FCC Rules. Operation is subject to the following two conditions: this device may not cause harmful interference, and this device must accept any interference received, including interference that may cause undersired operation.

IMPORTANT: Please read carefully and save these instructions, as you may need them at a later date. When using electrical equipment, basic safety precautions should always be followed as below:

TWO INSTALLATION METHODS

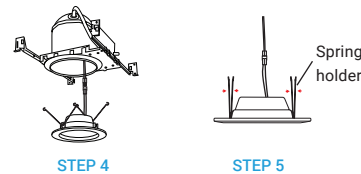
I. TITLE 24 CAN

1. Make sure power is turned off at the source before installing the fixture.
2. Remove any existing trim prior to installation of this fixture.
3. When using a Title 24 Can, remove the E26 base adapter from the fixture by detaching the male and female connectors.
4. Insert the male connector from the Title 24 Can into the female connector of the fixture.
5. Press together the spring holders of the retrofit kit together and insert them inside the housing retaining bracket.
6. Arrange the wires and push the fixture inside the housing can for secured installation.



STEP 1

STEP 3



STEP 4

STEP 5

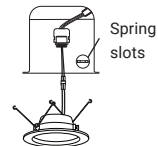
II. TRADITIONAL RECESSED CAN

1. Make sure power is turned off at the source before installing the fixture.
2. Remove any existing trim prior to installation of this fixture.
3. Screw the E26 base adapter included in the installation kit into the traditional can.
4. Connect the male connector of the E26 base adapter with the female connector of the fixture.
5. Press together the spring holders of the retrofit kit together and insert them inside the housing retaining bracket.
6. Arrange the wires and push the fixture inside the housing can for secured installation.

Compatible Housing Can



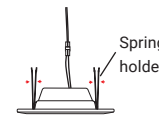
STEP 1



STEP 4



STEP 3



STEP 5

DIMMING

This light is not compatible with regular dimmer switches. Please download the Parmida Smart Home App and connect these lights with the App for full dimming control.

WARNING & CAUTIONS

RISK OF FIRE OR ELECTRIC SHOCK

DISCONNECT MAIN POWER AT FUSE OR CIRCUIT BREAKER BEFORE INSTALLING OR SERVICING THE FIXTURE.

THIS RETROFIT KIT IS ACCEPTED AS A COMPONENT OF A LUMINAIRE WHERE THE SUITABILITY OF THE COMBINATION SHALL BE DETERMINED BY AUTHORITIES HAVING JURISDICTION.

Install this kit only in luminaires that have the construction features and dimensions shown in the photographs and/or drawings and where the input rating of the retrofit kit does not exceed the input rating of the luminaire.

Only install in operating environments between -4°F and 113°F (-20°C and +45°C).

For App control guide, please see back page.