

INSTALLATION GUIDE

LED ULTRA-THIN CEILING LIGHT - 5CCT - 3" GIMBAL | WITH JUNCTION BOX

PLED-DNEB38W5CCT

IMPORTANT: Please read carefully and save these instructions, as you may need them at a later date. When using electrical equipment, basic safety precautions should always be followed as below:

1. Before beginning installation, ensure power is turned off at the main breaker.
2. Ensure your eyes are properly protected

GENERAL: All electrical connections must be in accordance with local and National Electric Code (NEC) standards. All electrical connections, installation and service should be performed by a qualified licensed electrician.

READ AND FOLLOW BELOW SAFETY INSTRUCTIONS

To prevent wiring damage or abrasion do not expose wiring to edges of sheet metal or other sharp objects.

Supply conductors (power wires) connecting the LED light must be rated minimum 90°C. If uncertain consult an electrician.

Type IC Rated for direct contact with insulation.

This LED light is dimmable. Please refer to our website for the most up-to-date compatible dimmer list.

REQUIRED TOOLS: (*not included*) Safety glasses and gloves, tape measure, saw, pencil/pen.

UNPACKING: Thoroughly inspect the LED light for freight damage. Freight damage should be reported to the delivery carrier.

SELECTING COLOR TEMPERATURE

To avoid risk of damage, ensure wall switch connected to the LED light is turned to off position before changing or selecting desired color temperature (CCT) on the selector switch. Select the color temperature via the CCT switch located on the junction box. Using the color (CCT) selector switch, select the desired color temperature (2700K Warm White, 3000K Soft White, 3500K Neutral White, 4000K Cool White, or 5000K Day Light).

COMPATIBLE DIMMER LIST

DIMMING

Dimming performance may depend on the dimmer, the dimmer range adjustment setting (for dimmers with brightness range adjustments), the wiring method, and/or the number of LED modules installed onto the dimmer circuit.

For dimmer selection, Dimming Control Manufacturers revise their product often; for the latest list of compatible dimmers please visit our website.

Please follow the Dimming Control Manufacturer's instructions for the installation of all dimming controls.

NOTE: The table shows dimmers that have been tested and have demonstrated proper operation under normal conditions.

The absence of a dimmer from this chart does not necessarily imply incompatibility.

Please visit our website www.parmida.com or contact our customer support team for more details.

LUTRON

AYCL-153P
CLDVSL-153P-WH
CT600P
CTCL-153P
DV600P
DVCL-153P
IPL06
MACL-153M
PD-6WCL
S600-P
SCL153P
TG-10P
TG600P
TGCL-153P

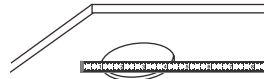
LEVITON

6674
6681
1G4411
1PL06
6672-1LW
6672-DECORA
DSL06
DSM10-DECORA

STEPS FOR INSTALLATION

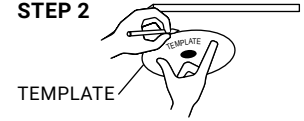
- RETROFIT:** If there is an existing hole, make sure that it is the correct size (2.8in/71mm for 3" model) for the LED light to properly fit. If applicable, remove any existing retrofit can.
- NEW INSTALLATION:** If there is no existing hole, cut a new hole using the provided hole template. Place template over the desired location. Trace the outer ring with a pen or pencil (not included). Cut the opening with a saw (not included).
- Open the cover of the remote driver box. Push and remove one of the knockouts on the side plate.
- Locate power supply leads from remote driver box and connect to power source using wire nuts (provided).
- Connect black wire to live wire, white wire to neutral wire, and green wire with ground (as shown) and secure using wire nuts. Close the cover of the box.
- Connect the remote driver box to the LED light and tighten the nut connector by hand.
- Place remote driver box through the cut-out hole. If remote driver box needs to be attached, use provided keyhole fittings on the back of the box to hang it using round head screws (not included).
- Pull the spring clips on the LED light up and through the ceiling hole and place LED light in the hole making sure the spring clips are holding securely.
- Turn the power back on. If the LED light doesn't illuminate within 5 seconds, turn power off, carefully remove the LED light and double check all wiring.

STEP 1

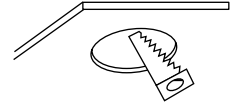


3" LIGHT: 2.8in/71mm

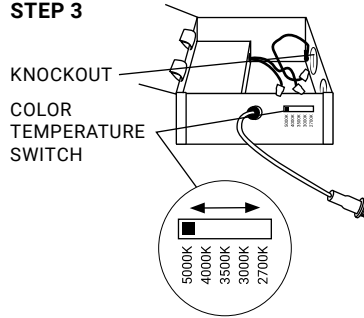
STEP 2



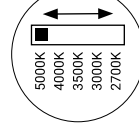
TEMPLATE



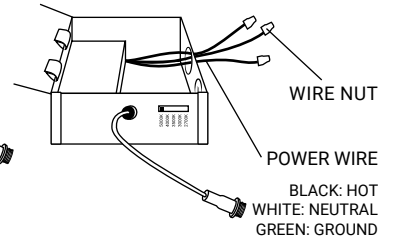
STEP 3



KNOCKOUT
COLOR
TEMPERATURE
SWITCH

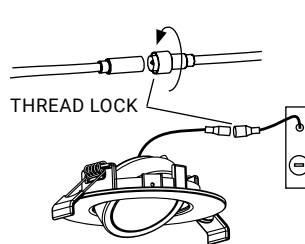


STEP 4 & 5



WIRE NUT
POWER WIRE
BLACK: HOT
WHITE: NEUTRAL
GREEN: GROUND

STEP 6

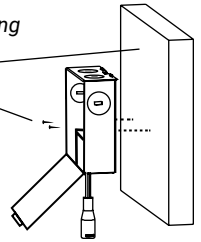


THREAD LOCK

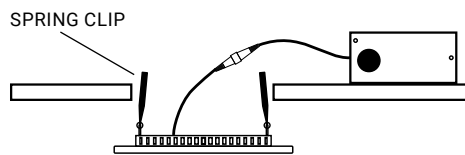
STEP 7

Optional Mounting

SIDE WALL
ROUND HEAD
SCREWS

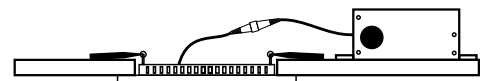


STEP 8



SPRING CLIP

STEP 9



WARNING

RISK OF FIRE OR ELECTRIC SHOCK

DISCONNECT MAIN POWER AT FUSE OR CIRCUIT BREAKER
BEFORE INSTALLING OR SERVICING THE LED LIGHT

DO NOT PLACE YOUR HAND UNDERNEATH SPRING CLIPS DURING
REMOVAL PROCESS. SNAPPING OF THE CLIPS CAN CAUSE
INJURIES TO THE HAND.

DO NOT USE ANY OTHER DRIVER EXCEPT PARMIDA LIGHTING
DRIVER THAT IS INCLUDED WITH THE LED LIGHT.