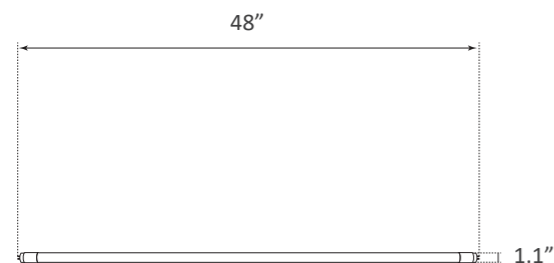


4' LED T8 TUBE LIGHT FROSTED LENS

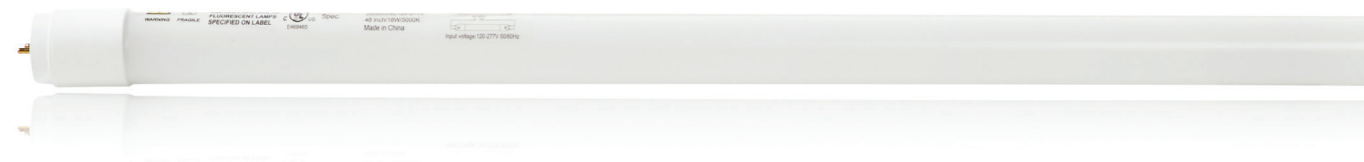


Weight 200g
Dimensions 48" x 1.1" x 1.1"



TYPE B, DIRECT INSTALLATION

The Parmida LED Technologies™ 4FT LED Direct Wire Type B T8 tube can be installed by a simple bypass of the ballast. This tube can be installed with a single-ended or dual-ended connection and it can install directly into your fixture's original shunted sockets (tombstones), eliminating the need to retrofit your fixture with non-shunted sockets. This tube is constructed with a shatterproof film sleeve to protect its glass housing, making it suitable for use in applications that require shatterproof lighting.



45,000
HOURS



SHATTERPROOF
UL RECOGNIZED



120-277V AC
VOLTAGE



2200
LUMENS



40 WATT
REPLACEMENT



300°
BEAM
ANGLE



INSTANT
ON



NO HUMMING/
BUZZING

PRODUCT SPECIFICATIONS

Item Number	PLED-T8DS18W3K-F	PLED-T8DS18W4K-F	PLED-T8DS18W5K-F
Wattage	18W	18W	18W
Lumens	2200lm	2200lm	2200lm
Voltage	120-277V AC	120-277V AC	120-277V AC
Equivalent	40W	40W	40W
Beam Angle	300°	300°	300°
Dimmable	No	No	No
Material	Glass with Shatterproof film	Glass with Shatterproof film	Glass with Shatterproof film
CCT	3000K, Soft White	4000K, Cool Light	5000K, Day Light
CRI	>80	>80	>80
LED Driver Type	Integrated Driver	Integrated Driver	Integrated Driver
Base type	G13	G13	G13
Life	45,000 Hours	45,000 Hours	45,000 Hours
Efficiency	55%	55%	55%
Certification	DLC, UL	DLC, UL	DLC, UL
Lens Type	Frosted	Frosted	Frosted
Warranty	5 Years	5 Years	5 Years