

# LED RECESSED CEILING LIGHT WITH JUNCTION BOX



When working with electrical components, make sure you turn off the power at the main breaker and that your eyes are properly protected.

IMPORTANT: Please read carefully and save these instructions, as you may need them at a later date.

- Make all electrical and grounded connections in accordance with the National Electrical Code (NEC) and any applicable local code requirements.
- Installation and service of luminaires should be performed by a qualified licensed electrician.
- Verify that supply voltage is correct by comparing it with luminaire label information.

## READ AND FOLLOW BELOW SAFETY INSTRUCTIONS

1. To prevent wiring damage or abrasion do not expose wiring to edges of sheet metal or other sharp objects.
2. Supply conductors (power wires) connecting the fixture must be rated minimum 90° C. If uncertain consult an electrician.
3. Type IC Rated for direct contact with insulation.
4. Suitable for damp locations.
5. This light is dimmable. Please refer to compatible dimmer list.

These instructions do not purport to cover all details or variations in equipment nor to provide every possible contingency to meet in connection with installation, operation, or maintenance. Should further information be desired or should particular problems arise which are not covered sufficiently for the purchaser's or owner's purposes, this matter should be referred to Parmida, LLC.

NOTE: Before beginning the installation, make sure all power is off, shutting power off in breaker box to areas where downlights are to be installed is recommended.

Required Tools (not included): Safety glasses and gloves, tape measure, saw, pencil/pen.

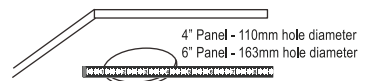
## UNPACKING

1. Thoroughly inspect the fixture for freight damage. Freight damage should be reported to the delivery carrier.

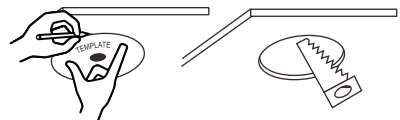
## STEPS FOR INSTALLATION

1. If there is an existing hole, make sure that it is the correct size (110mm for 4" & 163mm for 6") for the luminaire to properly fit. If applicable, remove any existing retrofit can.
2. If there is no existing hole, cut a new hole using the provided hole template. Place template over the desired location. Trace the outer ring with a pen or pencil (not included). Cut the opening with a saw (not included).
3. Open the cover of the remote driver box. Push and remove one of the knockouts on the side plate.
4. Locate power supply leads from remote driver box and connect to power source using easy connectors (provided).
5. Connect black wire to live wire, white wire to neutral wire, and green wire with ground (as shown) and secure using easy connectors. Close the cover of the box.

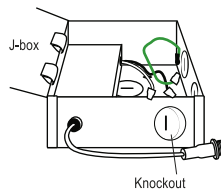
STEP 1



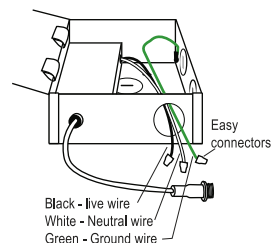
STEP 2



STEP 3

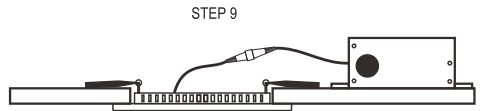
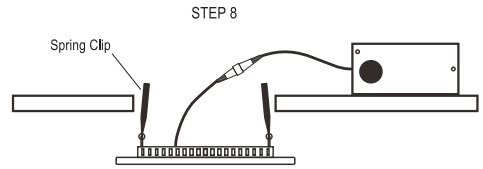
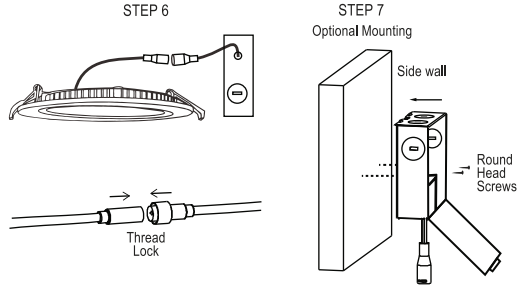


STEP 4 & 5



## STEPS FOR INSTALLATION contd.

6. Connect the remote driver box to the luminaire and tighten the nut connector by hand.
7. Place remote driver box through the cut-out hole. If remote driver box needs to be attached, use provided keyhole fittings on the back of the box to hang it using round head screws (not included).
8. Pull the spring clip on the fixture up and through the ceiling hole and place luminaire in the hole making sure the spring clips are holding securely.
9. Turn the power back on. If the luminaire doesn't illuminate within 5 seconds, turn power off, carefully remove the luminaire and double check all wiring.



### WARNING:

- Do not place your hand underneath spring clip during removal process. Snapping of the clips can cause injuries to the hand.
- Do not use any other driver except Parmida lighting driver that is included with the fixture.

### COMPATIBLE DIMMER LIST:

LUTRON	LEVITON	EATON
• MACL-153M-WH	• NO.6683-IW	• SAL06P
• DVCL-153P	• NO.6633-POG	
• DVLV-600P-WH-CSA	• NO.6681-W	
• D-603PGH	• 6613-PLW	
• AY-600P-WH-CAS	• NO.6631	
• D-600P-WH	• NO.6621	

\* NOTE: The above table shows dimmers that have been tested and have demonstrated proper operation under normal conditions.

\*The absence of a dimmer from this chart does not necessarily imply incompatibility.  
Please visit our website [www.parmida.com](http://www.parmida.com) or contact our customer support team for more details.