

**INSTALLATION GUIDE**  
**6" LED EYEBALL DOWNLIGHT**

**IMPORTANT:** Please read carefully and save these instructions, as you may need them at a later date. When using electrical equipment, basic safety precautions should always be followed as below:

**READ AND FOLLOW BELOW SAFETY INSTRUCTIONS**

**GENERAL:** All electrical connections must be in accordance with local and National Electrical Code (N.E.C) standards. If you are unfamiliar with proper electrical wiring connections obtain the services of a qualified electrician.

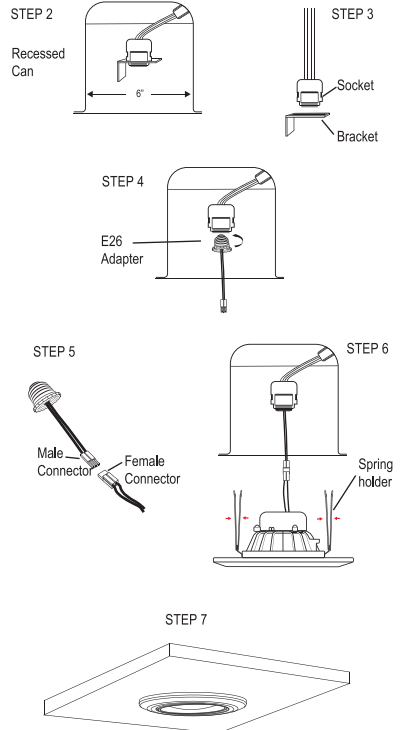
1. Do not make or alter any open holes in an enclosure of wiring or electrical components during kit installation.
2. To prevent wiring damage or abrasion do not expose wiring to edges of sheet metal or other sharp objects.
3. Suitable for damp locations
4. Suitable for Type IC or suitable for Type non-IC.
5. Use only in open luminaires.
6. This device is not intended for use with emergency exit.

**UNPACKING**

1. Thoroughly inspect the fixture for freight damage. Freight damage should be reported to the delivery carrier.

**STEPS FOR INSTALLATION**

1. Make sure power is turned off at the source to the recessed housing inside which the fixture is been installed.
2. Unscrew the lamp socket mounting bracket inside of the housing can.
3. Unclip the lamp socket from the bracket and discard the bracket.
4. Screw the E26 Base Adapter into the socket.
5. Plug the female connector of the retrofit kit to the socket adapter's male connector
6. Press together the spring holders of the retrofit kit together and insert them inside the housing retaining bracket
7. Carefully tuck all the wires inside and gently push the retrofit kit up the recessed can housing.

**DIMMING**

Dimming performance may depend on the dimmer, the dimmer range adjustment setting (for dimmers with brightness range adjustments), the wiring method, and/or the number of LED modules installed onto the dimmer circuit.

For dimmer selection, Dimming Control Manufacturers revise their product often; for the latest list of compatible dimmers please visit our website.

For best results, it is recommended to install a minimum of four LED modules onto one dimmer.

Before turning on the LED lights, set dimmer position at maximum before adjusting to a lower light level.

Please follow the Dimming Control Manufacturer's instructions for the installation of all dimming controls.

**WARNING**

**RISK OF FIRE OR ELECTRIC SHOCK**  
DISCONNECT MAIN POWER AT FUSE OR CIRCUIT BREAKER BEFORE  
INSTALLING OR SERVICING THE FIXTURE