

INSTALLATION GUIDE

5/6" LED DISK DOWNLIGHT

IMPORTANT: Please read carefully and save these instructions, as you may need them at a later date. When using electrical equipment, basic safety precautions should always be followed as below:

READ AND FOLLOW BELOW SAFETY INSTRUCTIONS

GENERAL: All electrical connections must be in accordance with local and National Electrical Code (N.E.C) standards. If you are unfamiliar with proper electrical wiring connections obtain the services of a qualified electrician.

1. Do not make or alter any open holes in an enclosure of wiring or electrical components during kit installation.
2. To prevent wiring damage or abrasion do not expose wiring to edges of sheet metal or other sharp objects.
3. Suitable for damp locations.
4. Suitable for Type IC or suitable for Type non-IC.
5. Use only in open luminaires.
6. This device is not intended for use with emergency exit.
7. This fixture is dimmable. Dimming range is 10%-100%. Please refer to our website for a compatible dimmer list.

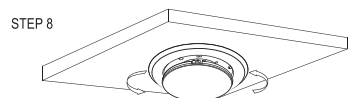
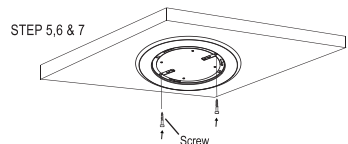
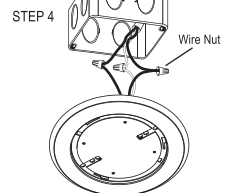
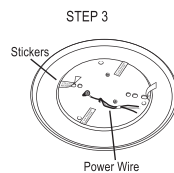
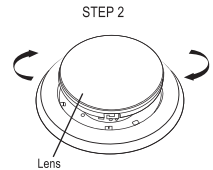
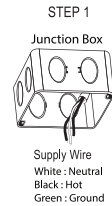
UNPACKING

1. Thoroughly inspect the fixture for freight damage. Freight damage should be reported to the delivery carrier.

2 INSTALLATION TYPES

I. SURFACE MOUNT

1. Make sure power is turned off at the source before installing the fixture and the J-box is securely mounted. (This fixture is compatible with 2.75", 3.5" or 4" J-box).
2. Remove lens by twisting clockwise.
3. Remove the two stickers at the back that read as 2.75", 3.5" or 4" *Junction box installation hole* to reveal 6 screw slots.
4. Connect the supply wires to the wires on the fixture using the three wire nuts included in the packaging. Attach white to white and black (red) to black by pushing the wires into the wire nuts. Also attach copper wire to copper wire (green) as grounding connection using the wire nut.
5. Arrange the wires in the back of the junction box.
6. Align appropriate holes in the mounting fixture with the holes in the J-box depending on the size of the box (2.75", 3.5" or 4").
7. Use the longer screws for a deep J-box or the shorter screws for a shallow J-Box to attach the mounting fixture, flush with the ceiling. Do not over tighten screws or fixture will not be tight to ceiling.
8. Complete the installation by placing the lens back into it's original position by twisting it in counter clockwise direction.



WARNING

RISK OF FIRE OR ELECTRIC SHOCK
DISCONNECT MAIN POWER AT FUSE OR CIRCUIT BREAKER BEFORE
INSTALLING OR SERVICING THE FIXTURE

Steps for Surface Mount Installation

II. RETROFIT

1. Make sure power is turned off at the source before installing the fixture.
2. Remove any existing trim prior to installation of this fixture.
3. Remove lens by twisting clockwise.
4. Peel off the two stickers at the back that read as *5" or 6" Recessed installation hole* to reveal 2 rectangular slots.
5. Place the spring holds into these rectangular slots and twist them at right angle in a locked position.
6. The spring holds must be adjusted depending on the can size (5" or 6") as shown in figure.
7. Connect the power wires from the E26 Adapter to the wires on the fixture using the two wire nuts included in the packaging. Attach white to white and black (red) to black by pushing the holds into the wire nuts.
8. Thread the E26 Adapter into the socket of the Recessed can.
9. Squeeze both the holders arms together and insert into the spring slots of the can.
10. Arrange all wires and carefully push the retrofit trim into the can.
11. Complete the installation by placing the lens back into it's original position by twisting it in counter clockwise direction.

DIMMING

Dimming performance may depend on the dimmer, the dimmer range adjustment setting (for dimmers with brightness range adjustments), the wiring method, and/or the number of LED modules installed onto the dimmer circuit.

For dimmer selection, Dimming Control Manufacturers revise their prout often; for the latest list of compatible dimmers please visit our website.

For best results, it is recommended to install a minimum of four LED modules onto one dimmer.

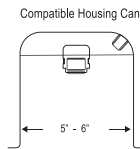
Before turning on the LED lights, set dimmer position at maximum before adjusting to a lower light level.

Please follow the Dimming Control Manufacturer's instructions for the installation of all dimming controls.

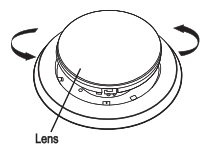
WARNING

RISK OF FIRE OR ELECTRIC SHOCK
DISCONNECT MAIN POWER AT FUSE OR CIRCUIT BREAKER BEFORE
INSTALLING OR SERVICING THE FIXTURE

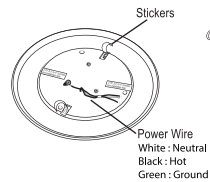
STEP 1



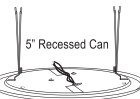
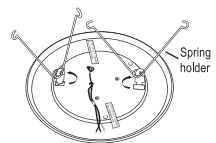
STEP 3



STEP 4



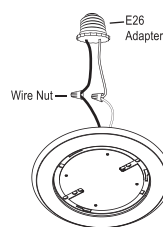
STEP 5



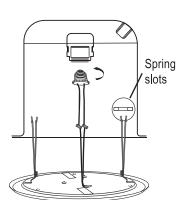
STEP 6



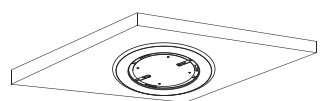
STEP 7



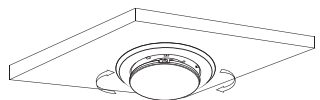
STEP 8 & 9



STEP 10



STEP 11



Steps for Retrofit Installation