

## INSTALLATION GUIDE 12V LED UNDER CABINET LIGHT

**IMPORTANT:** Please read carefully and save these instructions, as you may need them at a later date. When using electrical equipment, basic safety precautions should always be followed.

### READ AND FOLLOW BELOW SAFETY INSTRUCTIONS

**GENERAL:** All electrical connections must be in accordance with local and National Electrical Code (N.E.C) standards. LED Retrofit Kit installation requires knowledge of luminaire electrical systems. If you are unfamiliar with proper electrical wiring connections obtain the services of a qualified electrician.

### CAUTION

- Turn power off before installation.
- Risk of electric shock- do not use where directly exposed to water.
- Not suitable for totally enclosed fixtures. Not intended for use with emergency exit lamps or fixtures.
- May not be compatible with all dimmer switches.
- Do not use this fixture close to any source of heat.
- Place the device out of reach of children under 3 years old.

## UNPACKING

1. Thoroughly inspect the fixture for freight damage. Freight damage should be reported to the delivery carrier.

## STEPS FOR INSTALLATION

1. Make sure power is turned off at the source before installing the fixture.

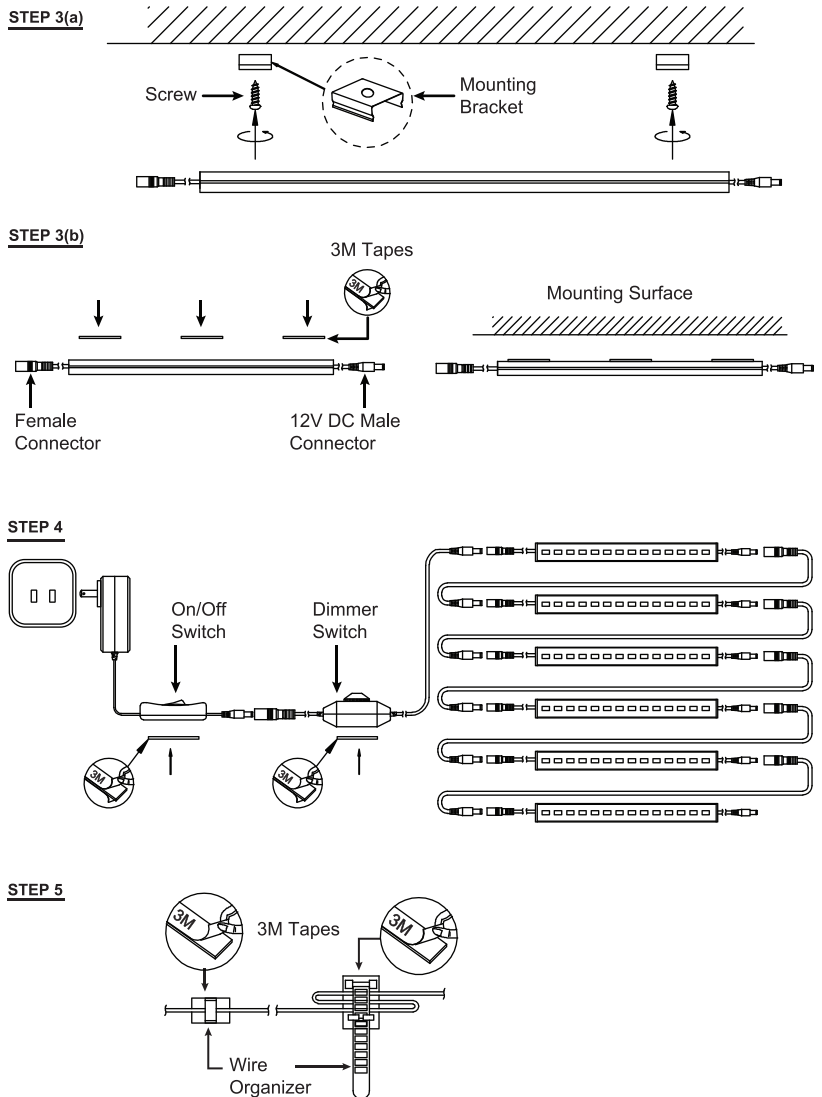
2. Determine location to install fixture(s). **WARNING:** To prevent wiring damage or abrasion, do not expose wiring to edges of sharp objects.

3. To secure the fixture to mounting surface: (Opt a) Position and install the metal brackets (supplied) using flat head screws in the desired location where you want to install the fixture. Then push the fixture into the bracket and snap into place. (Opt b) Or use the 3M tapes (supplied) on the back of the fixture to adhere it directly to flat surface.

4. Connect the Power cable (supplied) with the Dimmer Switch cable as shown. Then insert the male connector end into the female connector of the fixture. Use the interconnect cables (supplied) to link fixtures to each other end to end.

5. If required use the wire organizers (supplied) to hold the wires in any desired position or shorten the length.

Note: 6 LED light bars can be connected using the switch.



### ⚠ WARNING

RISK OF FIRE OR ELECTRIC SHOCK.  
SUITABLE FOR INDOOR DRY LOCATION ONLY  
DISCONNECT MAIN POWER AT FUSE OR CIRCUIT BREAKER BEFORE INSTALLING OR SERVICING THE FIXTURE. NO USER SERVICEABLE PARTS INSIDE.  
TO PREVENT OVERHEATING DO NOT INSTALL IN SMALL ENCLOSED SPACES.