

IMPORTANT: Please read carefully and save these instructions, as you may need them at a later date. When using electrical equipment, basic safety precautions should always be followed.

READ AND FOLLOW BELOW SAFETY INSTRUCTIONS

GENERAL: All electrical connections must be in accordance with local and National Electrical Code (N.E.C) standards. LED Retrofit Kit installation requires knowledge of luminaire electrical systems. If you are unfamiliar with proper electrical wiring connections obtain the services of a qualified electrician.

CAUTION

- Turn power off before installation.
- Use only on 120 volt circuits.
- Risk of electric shock- do not use where directly exposed to water.
- Not suitable for totally enclosed fixtures. Not intended for use with emergency exit lamps or fixtures.
- May not be compatible with all dimmer switches.
- Do not use this fixture close to any source of heat.
- Place the device out of reach of children under 3 years old.

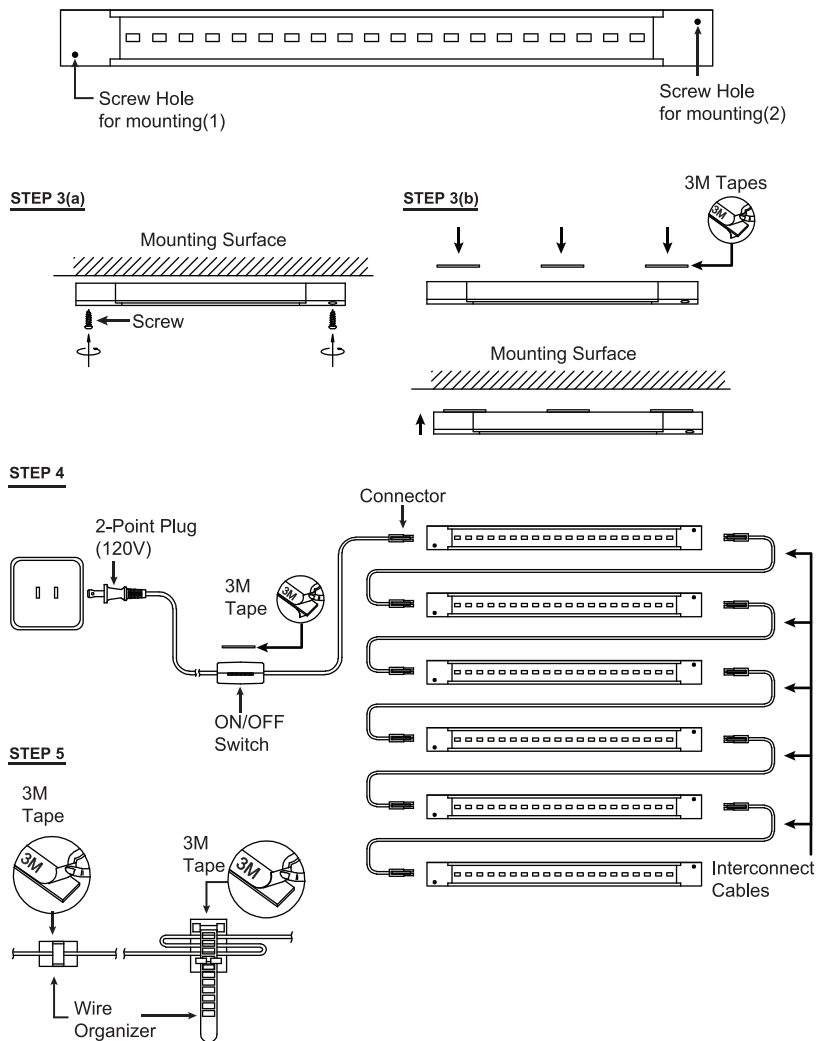
UNPACKING

1. Thoroughly inspect the fixture for freight damage. Freight damage should be reported to the delivery carrier.

STEPS FOR INSTALLATION

1. Make sure power is turned off at the source before installing the fixture.
2. Determine location to install fixture(s). **WARNING:** To prevent wiring damage or abrasion, do not expose wiring to edges of sharp objects.
3. To secure the fixture to mounting surface: (Opt a) Use the screw holes on both ends of the fixture and mark their position on the desired surface. Drill suitable holes and secure the housing using flat head wood screws (supplied). Be careful not to drive screws all the way through the cabinet bottom. Use shorter screws if necessary (not included).
(Opt b) Or use the 3M tapes (supplied) on the back of the fixture to adhere it directly to flat surface.
4. Insert the connector end of the power cable to one end of the fixture and plug into (120V) power supply. Use the interconnect cables (supplied) to link fixtures to each other end to end.
5. If required use the wire organizers (supplied) to hold the wires in any desired position or shorten the length.

Note: Max 24 LED light bars can be connected using the switch.



WARNING

RISK OF FIRE OR ELECTRIC SHOCK.
SUITABLE FOR INDOOR DRY LOCATION ONLY
DISCONNECT MAIN POWER AT FUSE OR CIRCUIT BREAKER BEFORE INSTALLING OR SERVICING THE FIXTURE. NO USER SERVICEABLE PARTS INSIDE.
TO PREVENT OVERHEATING DO NOT INSTALL IN SMALL ENCLOSED SPACES.

**COMPATIBLE DIMMER LIST
120V LED UNDER CABINET LIGHT**

Sl.No.	Brand	Dimmer Model
1. 2. 3. 4. 5. 6. 7. 8. 9. 10. 11.	LUTRON	MACL-153MR-WH MACL-153P TGCL-153P SCL-153PR-WH SCL-153-LA DVCL-153P CTCL-153P LGCL-153P N-600 S-603PG-WH CTELV-303P-WH
12. 13. 14. 15. 16. 17. 18. 19. 20. 21.	LEVITON	6161-A IPL06-10Z IPI0-1LZ IPI06-1LZ 6674 6672-1LW 6633-POG 6681 6151 6633-I
22. 23. 24. 25.	GE	10464 18027 45602 55431