

DEDON

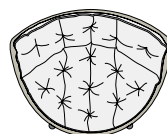
MBRACE

MBRACE

Lounge chair

Design by **Sebastian Herkner** | Item code: **085006** | Weight **7,6 kg/17 lbs** | Volume **0,25 m³/25 cu ft** | COM (Customer Own Material): **2,45 m/3.75 yd** (plain fabric only)

Measurements



107
42¼

84
33

78
30¾
cm
inch

Collection: MBRACE by Sebastian Herkner takes a joyfully unconventional approach to poolside furniture, bringing DEDON fiber seating and a solid teak base together for the very first time. The result is an eye-catching, instantly likable collection for lounging, dining and more. MBRACE captures the spirit of barefoot luxury while extending the DEDON design language into new, more Nordic territory.

Lounge chair: This low-back lounger features a triaxial open-weave seat, a solid-teak base and a choice of comfortable seat cushions.

Frame: The frame consists of aluminum. The base consists of premium teak.

Finishing: The frame is electrostatic powder-coated in a color similar to that of the fiber. The base consists of natural-finish teak.

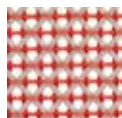
Characteristics: Friendly, engaging, embracing, innovative, exceptionally comfortable

Options: This item is available with a cushion or a seat cushion, and - for contract sales only - with an aluminum base.

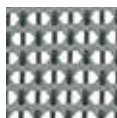
Frame maintenance: Clean with a soft cloth and warm water. Wash the bases with warm water in which natural soap flakes have been dissolved.

Cushion maintenance: While the covers cannot be removed, the complete cushions may be washed by hand.

Fiber standard



112
spice



141
baltic



115
pepper



126
arabica

Additional items



Cover

Cushion

Cushion: **95085006**
Seat cushion: **95085016**

Please see fabric options fact sheet

Award



Interior Innovation
„Best of Best“

To learn more about DEDON, our collections and warranty policy, please visit our website –

www.dedon.de

0117

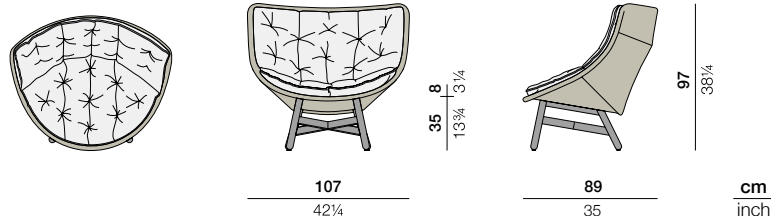
DEDON

MBRACE

Wing chair

Design by **Sebastian Herkner** | Item code: **085004** | Weight **8,6 kg/19 lbs** | Volume **0,92 m³/33 cu ft** | COM (Customer Own Material): **3,80 m/4.00 yd** (plain fabric only)

Measurements



Collection: MBRACE by Sebastian Herkner takes a joyfully unconventional approach to poolside furniture, bringing DEDON fiber seating and a solid teak base together for the very first time. The result is an eye-catching, instantly likable collection for lounging, dining and more. MBRACE captures the spirit of barefoot luxury while extending the DEDON design language into new, more Nordic territory.

Wing chair: This wing-back lounge features a triaxial open-weave seat, a solid-teak base and a choice of comfortable seat cushions.

Frame: The frame consists of aluminum. The base consists of premium teak.

Finishing: The frame is electrostatic powder-coated in a color similar to that of the fiber. The base consists of natural-finish teak.

Characteristics: Friendly, engaging, embracing, innovative, exceptionally comfortable

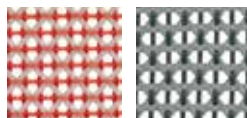
Options: This item is available with a cushion or a seat cushion, and - for contract sales only - with an aluminum base.

Frame maintenance: Clean with a soft cloth and warm water.

Wash the bases with warm water in which natural soap flakes have been dissolved.

Cushion maintenance: While the covers cannot be removed, the complete cushions may be washed by hand.

Fiber standard



112
spice

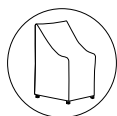
141
baltic



115
pepper

126
arabica

Additional items



Cover

Cushion

Cushion: **95085004**
Seat cushion: **95085016**

Please see fabric options fact sheet

Award



Interior Innovation
„Best of Best“

To learn more about DEDON, our collections and warranty policy, please visit our website –

www.dedon.de

0117

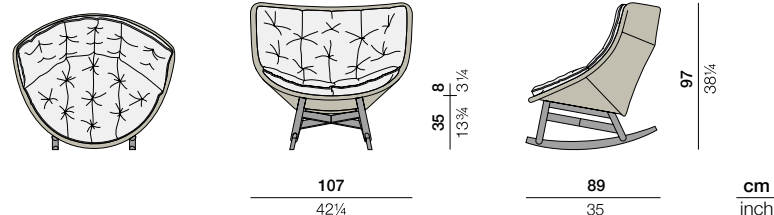
DEDON

MBRACE

Rocking chair

Design by **Sebastian Herkner** | Item code: **085008** | Weight **9,9 kg/22 lbs** | Volume **1,01 m³/36 cu ft** | COM (Customer Own Material): **3,80 m/4.00 yd** (plain fabric only)

Measurements



Collection: MBRACE by Sebastian Herkner takes a joyfully unconventional approach to poolside furniture, bringing DEDON fiber seating and a solid teak base together for the very first time. The result is an eye-catching, instantly likable collection for lounging, dining and more. MBRACE captures the spirit of barefoot luxury while extending the DEDON design language into new, more Nordic territory.

Rocking chair: This wing-back rocking chair features a triaxial open-weave seat, a solid-teak base and a choice of comfortable seat cushions.

Frame: The frame consists of aluminum. The base consists of premium teak.

Finishing: The frame is electrostatic powder-coated in a color similar to that of the fiber. The base consists of natural-finish teak.

Characteristics: Friendly, engaging, embracing, innovative, exceptionally comfortable

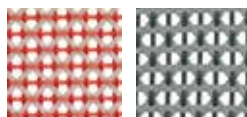
Options: This item is available with a cushion or a seat cushion.

Frame maintenance: Clean with a soft cloth and warm water.

Wash the bases with warm water in which natural soap flakes have been dissolved.

Cushion maintenance: While the covers cannot be removed, the complete cushions may be washed by hand.

Fiber standard



112
spice

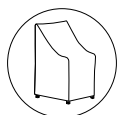
141
baltic



115
pepper

126
arabica

Additional items



Cover

Cushion

Cushion: **95085004**
Seat cushion: **95085016**

Please see fabric options fact sheet

Award



Interior Innovation
„Best of Best“

To learn more about DEDON, our collections and warranty policy, please visit our website –

www.dedon.de

0117

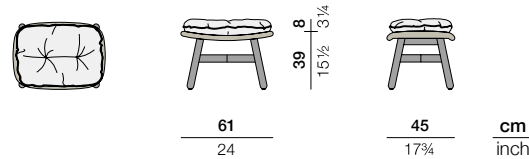
DEDON

MBRACE

Footstool

Design by **Sebastian Herkner** | Item code: **085032** | Weight **2,6 kg/6 lbs** | Volume **0,11 m³/4 cu ft** | COM (Customer Own Material): **0,75 m/1.50 yd** (plain fabric only)

Measurements



Collection: MBRACE by Sebastian Herkner takes a joyfully unconventional approach to poolside furniture, bringing DEDON fiber seating and a solid teak base together for the very first time. The result is an eye-catching, instantly likable collection for lounging, dining and more. MBRACE captures the spirit of barefoot luxury while extending the DEDON design language into new, more Nordic territory.

Footstool: Featuring a triaxial open-weave top and a solid-teak base, the MBRACE footstool goes perfectly with all three chairs in the collection.

Frame: The frame consists of aluminum. The base consists of premium teak.

Finishing: The frame is electrostatic powder-coated in a color similar to that of the fiber. The base consists of natural-finish teak.

Characteristics: Friendly, engaging, embracing, innovative, exceptionally comfortable

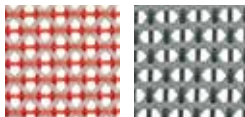
Option: This item is available with an aluminum base - for contract sales only

Frame maintenance: Clean with a soft cloth and warm water.

Wash the bases with warm water in which natural soap flakes have been dissolved.

Cushion maintenance: While the covers cannot be removed, the complete cushions may be washed by hand.

Fiber standard



112
spice

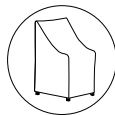
141
baltic



115
pepper

126
arabica

Additional items



Cover

Cushion

Cushion: **95085032**

Please see fabric options fact sheet

Award



Interior Innovation
„Best of Best“

To learn more about DEDON, our collections and warranty policy, please visit our website –

www.dedon.de

0118

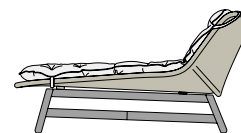
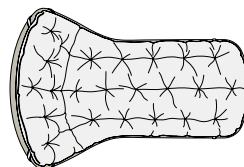
DEDON

MBRACE

Daybed

Design by **Sebastian Herkner** | Item code: **085018** | Weight **14,4 kg/32 lbs** | Volume **1,35 m³/48 cu ft** | COM (Customer Own Material): **4,26 m/tbd yd** (plain fabric only)

Measurements



106
41 3/4

35 10
13 3/4 4

159
62 1/2

80
31 1/2

cm
inch

Collection: MBRACE by Sebastian Herkner takes a joyfully unconventional approach to poolside furniture, bringing DEDON fiber seating and a solid teak base together for the very first time. The result is an eye-catching, instantly likable collection for lounging, dining and more. MBRACE captures the spirit of barefoot luxury while extending the DEDON design language into new, more Nordic territory.

Daybed: This luxurious daybed has a distinctive organic form that echoes the design of the MBRACE loungers. Featuring cosy cushions and an open triaxial weave, it offers the possibility of sitting and lying in different positions.

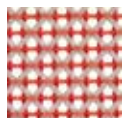
Frame: The frame consists of aluminum. The base consists of premium teak.

Finishing: The frame is electrostatic powder-coated in a color similar to that of the fiber. The base consists of natural-finish teak.

Characteristics: Friendly, engaging, embracing, innovative, exceptionally comfortable

Frame maintenance: Frame Maintenance: Clean with a soft cloth and warm water. Wash the bases with warm water in which natural soap flakes have been dissolved.

Fiber standard



112
spice



126
arabica



115
pepper

Additional items



Cover

Cushion

Cushion: **95085018**

Please see fabric options fact sheet

Award



Interior Innovation
„Best of Best“

To learn more about DEDON, our collections and warranty policy, please visit our website –

www.dedon.de

0118

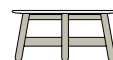
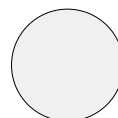
DEDON

MBRACE

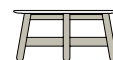
Coffee table Ø 70 cm / Ø 27½"

Design by **Sebastian Herkner** | Item code: **085038** | Weight **12,2 kg/38 lbs** | Volume **0,17 m³/3 cu ft**

Measurements



ø 70
ø 27½



ø 70
ø 27½

34,5
13½

cm
inch

Collection: MBR MBRACE brings cocooning comfort, iconic style and a modern material mix of teak and fiber to the outdoors. Sebastian Herkner's awardwinning collection takes its name from the welcoming gesture of the seating, which wraps users in a cosy embrace. Now available in Baltic, Sea Salt and three other colorways, MBRACE comprises a full range of dining and lounging elements, including new coffee and side tables with handcrafted ceramic surface patterns.

Coffee table: The side table Ø70cm features a solid-teak base with a frost-proof, non-absorbent, impact-resistant ceramic tabletop in a handcrafted pattern. Available in chalk, taupe or black, the side table Ø70cm combines with both other sizes of MBRACE side table to create a series of overlapping tabletops.

Frame: The base consists of naturalfinish teak. The tabletops are made of Monolite lpergres®, a frost-proof ceramic material.

Characteristics: Friendly, engaging, embracing, innovative, handcrafted.

Maintenance: Clean with a soft cloth and warm water. Wash the bases with warm water in which natural soap flakes have been dissolved.

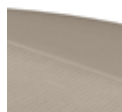
Tabletop ceramic



300
chalk

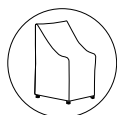


341
black



308
taupe

Additional items



Cover

To learn more about DEDON, our collections and warranty policy, please visit our website –

www.dedon.de

0118

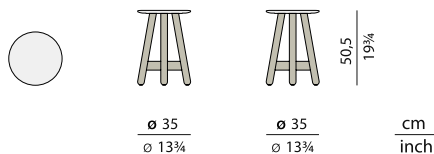
DEDON

MBRACE

Side table Ø 35 cm / Ø 13¾"

Design by **Sebastian Herkner** | Item code: **085034** | Weight **6,2kg/14 lbs** | Volume **0,06 m³/3 cu ft**

Measurements



Collection: MBRACE brings cocooning comfort, iconic style and a modern material mix of teak and fiber to the outdoors. Sebastian Herkner's awardwinning collection takes its name from the welcoming gesture of the seating, which wraps users in a cosy embrace. Now available in Baltic, Sea Salt and three other colorways, MBRACE comprises a full range of dining and lounging elements, including new coffee and side tables with handcrafted ceramic surface patterns.

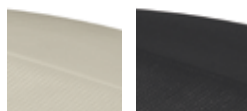
Side table: The side table Ø35cm features a solid-teak base with a frost-proof, non-absorbent, impact-resistant ceramic tabletop in a handcrafted pattern. Available in chalk, taupe or black, the side table Ø35cm combines with both other sizes of MBRACE side table to create a series of overlapping tabletops.

Frame: The base consists of natural finish teak. The tabletops are made of Monolite Ipergres®, a frost-proof ceramic material.

Characteristics: Friendly, engaging, embracing, innovative, handcrafted.

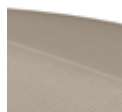
Maintenance: Clean with a soft cloth and warm water. Wash the bases with warm water in which natural soap flakes have been dissolved.

Tabletop ceramic



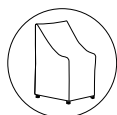
300
chalk

341
black



308
taupe

Additional items



Cover

To learn more about DEDON, our collections and warranty policy, please visit our website –

www.dedon.de

0118

DEDON

MBRACE

Side table Ø 50 cm / Ø 19¾"

Design by **Sebastian Herkner** | Item code: **085036** | Weight **9,2 kg/20 lbs** | Volume **0,11 m³/4 cu ft**

Measurements



Ø 50
Ø 19¾

Ø 50
Ø 19¾

cm
inch

Collection: MBRACE brings cocooning comfort, iconic style and a modern material mix of teak and fiber to the outdoors. Sebastian Herkner's awardwinning collection takes its name from the welcoming gesture of the seating, which wraps users in a cosy embrace. Now available in Baltic, Sea Salt and three other colorways, MBRACE comprises a full range of dining and lounging elements, including new coffee and side tables with handcrafted ceramic surface patterns.

Side table: The side table Ø50cm features a solid-teak base with a frost-proof, non-absorbent, impact-resistant ceramic tabletop in a handcrafted pattern. Available in chalk, taupe or black, the side table Ø50cm combines with both other sizes of MBRACE side table to create a series of overlapping tabletops.

Frame: The base consists of natural finish teak. The tabletops are made of Monolite Ipergres®, a frost-proof ceramic material.

Characteristics: Friendly, engaging, embracing, innovative, handcrafted.

Maintenance: Clean with a soft cloth and warm water. Wash the bases with warm water in which natural soap flakes have been dissolved.

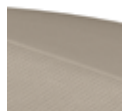
Tabletop ceramic



300
chalk

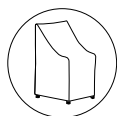


341
black



308
taupe

Additional items



Cover

To learn more about DEDON, our collections and warranty policy, please visit our website –

www.dedon.de

0118

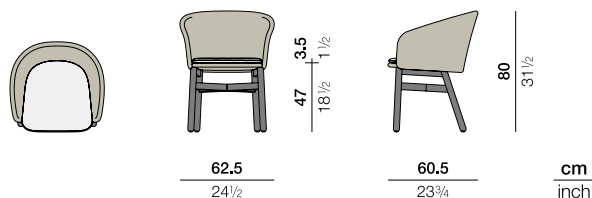
DEDON

MBRACE

Armchair

Design by **Sebastian Herkner** | Item code: **085001** | Weight **5,6 kg/13 lbs** | Volume **0,3 m³/11 cu ft** | COM (Customer Own Material): **0,57 m/tbd yd** (plain fabric only)

Measurements



Collection: MBRACE by Sebastian Herkner takes a joyfully unconventional approach to poolside furniture, bringing DEDON fiber seating and a solid teak base together for the very first time. The result is an eye-catching, instantly likable collection for lounging, dining and more. MBRACE captures the spirit of barefoot luxury while extending the DEDON design language into new, more Nordic territory.

Armchair: Bringing the shape, sensibility and material mix of the MBRACE loungers into dining, this distinctive chair cocoons users in cosy comfort while offering exceptional value.

Frame: The frame consists of aluminum. The base consists of premium teak.

Finishing: The frame is electrostatic powder-coated in a color similar to that of the fiber. The base consists of natural-finish teak.

Characteristics: Friendly, engaging, embracing, innovative, exceptionally comfortable

Option: This item is available with a seat cushion and with seat cushion + back cushion, and - for contract sales only - with an aluminum base.

Frame maintenance: Frame Maintenance: Clean with a soft cloth and warm water. Wash the bases with warm water in which natural soap flakes have been dissolved.

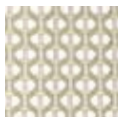
Cushion maintenance: Remove the cushions and wash at 30°.

Fiber standard



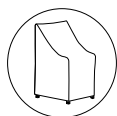
115
pepper

126
arabica



140
sea salt

Additional items



Cover

Cushion

Seat cushion: **95085001**

Seat cushion + back cushion: **95085003**

Please see fabric options fact sheet

Award



Interior Innovation
„Best of Best“

To learn more about DEDON, our collections and warranty policy, please visit our website –

www.dedon.de

0118

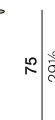
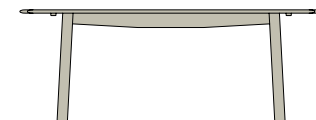
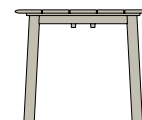
DEDON

MBRACE

Dining table 200 × 90 cm

Design by **Sebastian Herkner** | Item code: **085065** | Weight **40 kg/89 lbs** | Volume **1,35 m³/48 cu ft**

Measurements



90
35½

200
78¾

75
29½
cm
inch

Collection: MBRACE by Sebastian Herkner takes a joyfully unconventional approach to poolside furniture, bringing DEDON fiber seating and a solid teak base together for the very first time. The result is an eye-catching, instantly likable collection for lounging, dining and more. MBRACE captures the spirit of barefoot luxury while extending the DEDON design language into new, more Nordic territory.

Dining table: With a shape reminiscent of a surfboard, this distinctive dining table of solid, slatted teak is only 90cm deep, creating a sense of intimacy and informality that makes it unique.

Frame: This table consists of premium teak.

Characteristics: Friendly, engaging, embracing, innovative, handcrafted.

Frame maintenance: Natural-finish teak maintenance: Wash the teak using warm water and a soft sponge.

Additional items



Cover

Award



Interior Innovation
„Best of Best“

To learn more about DEDON, our collections and warranty policy, please visit our website –

www.dedon.de

0117

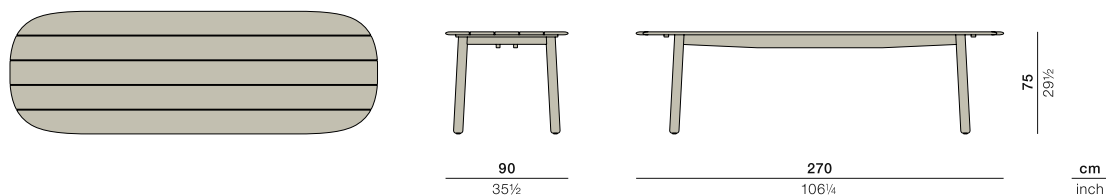
DEDON

MBRACE

Dining table 270 × 90 cm

Design by **Sebastian Herkner** | Item code: **085055** | Weight **51 kg/113 lbs** | Volume **1,83 m³/65 cu ft**

Measurements



Collection: MBRACE by Sebastian Herkner takes a joyfully unconventional approach to poolside furniture, bringing DEDON fiber seating and a solid teak base together for the very first time. The result is an eye-catching, instantly likable collection for lounging, dining and more. MBRACE captures the spirit of barefoot luxury while extending the DEDON design language into new, more Nordic territory.

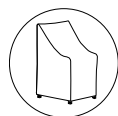
Dining table: With a shape reminiscent of a surfboard, this distinctive dining table of solid, slatted teak is only 90cm deep, creating a sense of intimacy and informality that makes it unique.

Frame: This table consists of premium teak.

Characteristics: Friendly, engaging, embracing, innovative, handcrafted.

Frame maintenance: Natural-finish teak maintenance: Wash the teak using warm water and a soft sponge.

Additional items



Cover

Award



Interior Innovation
„Best of Best“

To learn more about DEDON, our collections and warranty policy, please visit our website –

www.dedon.de

0117

DEDON