

DEDON

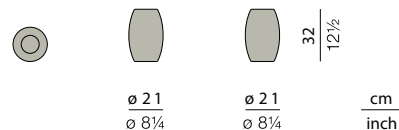
**DALA** LANTERN & PLANTER

# DALA

## Lantern

Design by **Stephen Burks** | Ref. **AJM** | Weight **1 kg/3 lbs** | Volume **0,02 m³/1 cu ft**

### Measurements



**Collection:** Designed using the same mesh structure and environmentally-friendly fiber as the DALA furniture, the DALA planter and lantern are the perfect complement to any DEDON collection. Each piece is hand-woven using richly textured strands of DEDON's groundbreaking new ecological fiber.

**Lantern:** This DALA lantern features open weaving to let candlelight through.

**Frame:** Aluminum

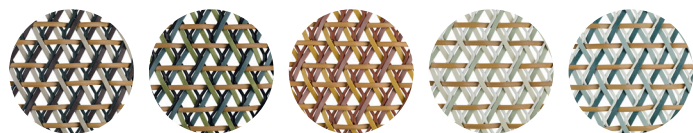
**Finishing:** Frame is electrostatic powder-coated. Fiber is High-Density Polyethylene (HDPE).

**Characteristics:** Colorful, distinctive, innovative, versatile, practical, ecological

**Options:** An additional hanger is available to hang the lantern

**Frame Maintenance:** Clean with soft cloth and warm water. Contact with chlorinated pool water should be avoided. Areas splashed with chlorinated water should be cleaned with ordinary water.

### Fiber Standard



**164** rioja  
**165** ubud  
**166** cuba  
**167** ibiza  
**168** bahamas

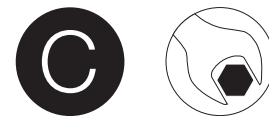
### Additional Items



Candle option  
Ref: **CJW**

Hanger for lantern  
Ref: **AJP**

### Features



Contract

Assembly  
required

To learn more about DEDON, our collections and warranty policy, please visit our website –

[dedon.de](http://dedon.de)

1/24

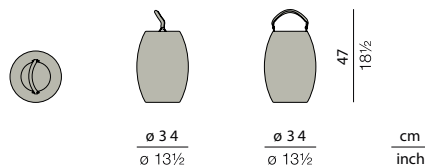
**DEDON**

# DALA

## Lantern

Design by **Stephen Burks** | Ref. **AJQ** | Weight **2 kg/5 lbs** | Volume **0,06 m³/2 cu ft**

### Measurements



**Collection:** Designed using the same mesh structure and environmentally-friendly fiber as the DALA furniture, the DALA planter and lantern are the perfect complement to any DEDON collection. Each piece is hand-woven using richly textured strands of DEDON's groundbreaking new ecological fiber.

**Lantern:** This DALA lantern features open weaving to let candlelight through. Elegant, man-made leather handles allow you to hang it or place it on the ground.

**Frame:** Aluminum

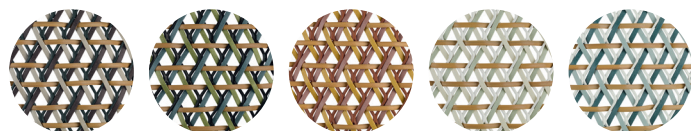
**Finishing:** Frame is electrostatic powder-coated. Fiber is High-Density Polyethylene (HDPE).

**Characteristics:** Colorful, distinctive, innovative, versatile, practical, ecological

**Options:** An additional hanger is available to hang the lantern

**Frame Maintenance:** Clean with soft cloth and warm water. Contact with chlorinated pool water should be avoided. Areas splashed with chlorinated water should be cleaned with ordinary water.

### Fiber Standard



**164** rioja  
**165** ubud  
**166** cuba  
**167** ibiza  
**168** bahamas

### Additional Items



Ref: **CJW**



Ref: **AJS**



Ref: **CFE**

### Features



To learn more about DEDON, our collections and warranty policy, please visit our website –

[dedon.de](http://dedon.de)

1/24

**DEDON**

# DALA

## Lantern

Design by **Stephen Burks** | Ref. **AJU** | Weight **2,5 kg/6 lbs** | Volume **0,11 m³/4 cu ft**

### Measurements



**Collection:** Designed using the same mesh structure and environmentally-friendly fiber as the DALA furniture, the DALA planter and lantern are the perfect complement to any DEDON collection. Each piece is hand-woven using richly textured strands of DEDON's groundbreaking new ecological fiber.

**Lantern:** This DALA lantern features open weaving to let candlelight through. Elegant, man-made leather handles allow you to hang it or place it on the ground.

**Frame:** Aluminum

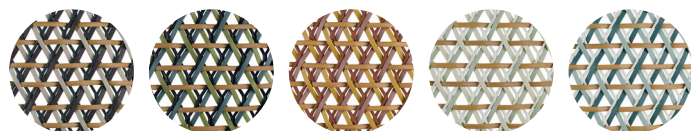
**Finishing:** Frame is electrostatic powder-coated. Fiber is High-Density Polyethylene (HDPE).

**Characteristics:** Colorful, distinctive, innovative, versatile, practical, ecological

**Options:** An additional hanger is available to hang the lantern

**Frame Maintenance:** Clean with soft cloth and warm water. Contact with chlorinated pool water should be avoided. Areas splashed with chlorinated water should be cleaned with ordinary water.

### Fiber Standard



**164** rioja  
**165** ubud  
**166** cuba  
**167** ibiza  
**168** bahamas

### Additional Items



Candle option  
Ref: **CJW**



Hanger for lantern  
Ref: **AJS**



OMBII  
Ref: **CFE**

### Features



Contract



Assembly  
required

To learn more about DEDON, our collections and warranty policy, please visit our website –

[dedon.de](https://www.dedon.de)

1/24

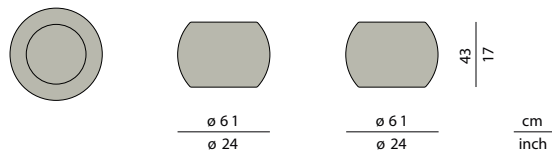
**DEDON**

# DALA

## Planter S

Design by **Stephen Burks** | Ref. **AJY** | Weight **5 kg/11 lbs** | Volume **0,17 m³/6 cu ft**

### Measurements



**Collection:** Designed using the same mesh structure and environmentally-friendly fiber as the DALA furniture, the DALA planter and lantern are the perfect complement to any DEDON collection. Each piece is hand-woven using richly textured strands of DEDON's groundbreaking new ecological fiber.

**Planter:** This DALA planter brings subtle sophistication to any outdoor living room. It features a rotomolded internal pot.

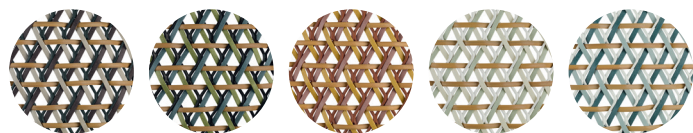
**Frame:** Aluminum

**Finishing:** Frame is electrostatic powder-coated. Fiber is High-Density Polyethylene (HDPE).

**Characteristics:** Colorful, distinctive, innovative, versatile, practical, ecological

**Frame Maintenance:** Clean with soft cloth and warm water. Contact with chlorinated pool water should be avoided. Areas splashed with chlorinated water should be cleaned with ordinary water.

### Fiber Standard



164

rioja

165

ubud

166

cuba

167

ibiza

168

bahamas

### Additional Items



$\varnothing 39,5$   $\varnothing 15\frac{1}{2}$

41 16¼

### Features



Contract



Assembly  
required

To learn more about DEDON, our collections and warranty policy, please visit our website –

[dedon.de](https://www.dedon.de)

1/24

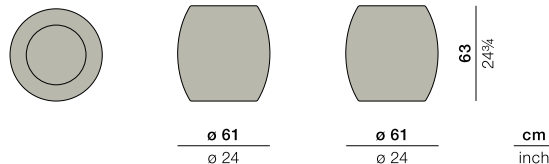
DEDON

# DALA

## Planter M

Design by **Stephen Burks** | Ref. **AJ3** | Weight **5 kg/11 lbs** | Volume **0,23 m³/6 cu ft**

### Measurements



**Collection:** Designed using the same mesh structure and environmentally-friendly fiber as the DALA furniture, the DALA planter and lantern are the perfect complement to any DEDON collection. Each piece is hand-woven using richly textured strands of DEDON's groundbreaking new ecological fiber.

**Planter:** This DALA planter brings subtle sophistication to any outdoor living room. It features a rotomolded internal pot.

**Frame:** Aluminum

**Finishing:** Frame is electrostatic powder-coated. Fiber is High-Density Polyethylene (HDPE).

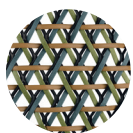
**Characteristics:** Colorful, distinctive, innovative, versatile, practical, ecological

**Frame Maintenance:** Clean with soft cloth and warm water. Contact with chlorinated pool water should be avoided. Areas splashed with chlorinated water should be cleaned with ordinary water.

### Fiber Standard



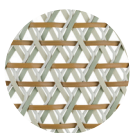
**164**  
rioja



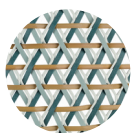
**165**  
ubud



**166**  
cuba



**167**  
ibiza



**168**  
bahamas

### Additional Items



$\varnothing 39,5$   $\varnothing 15\frac{1}{2}$

41 16 1/4

### Features



Contract



Assembly  
required

To learn more about DEDON, our collections and warranty policy, please visit our website –

[dedon.de](https://dedon.de)

1/24

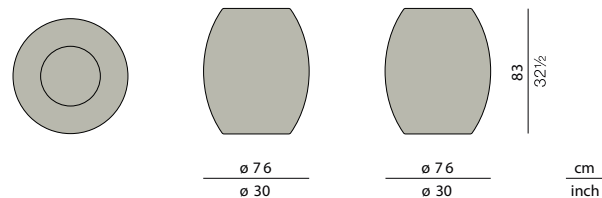
**DEDON**

# DALA

## Planter L

Design by **Stephen Burks** | Ref. **AJ1** | Weight **8 kg/18 lbs** | Volume **0,48 m³/17 cu ft**

### Measurements



**Collection:** Designed using the same mesh structure and environmentally-friendly fiber as the DALA furniture, the DALA planter and lantern are the perfect complement to any DEDON collection. Each piece is hand-woven using richly textured strands of DEDON's groundbreaking new ecological fiber.

**Planter:** This DALA planter brings subtle sophistication to any outdoor living room. It features a rotomolded internal pot.

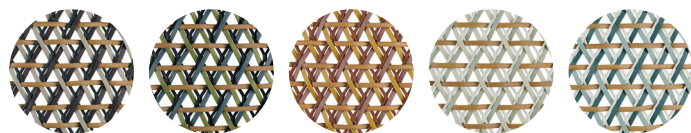
**Frame:** Aluminum

**Finishing:** Frame is electrostatic powder-coated. Fiber is High-Density Polyethylene (HDPE).

**Characteristics:** Colorful, distinctive, innovative, versatile, practical, ecological

**Frame Maintenance:** Clean with soft cloth and warm water. Contact with chlorinated pool water should be avoided. Areas splashed with chlorinated water should be cleaned with ordinary water.

### Fiber Standard



164

rioja

165

ubud

166

cuba

167

ibiza

168

bahamas

### Additional Items



41 16 1/4

$\varnothing 39,5$   $\varnothing 15 1/2$

### Features



Contract



Assembly  
required

To learn more about DEDON, our collections and warranty policy, please visit our website –

[dedon.de](https://www.dedon.de)

1/24

**DEDON**