

# BT8

## Product Specification

---

### Specification

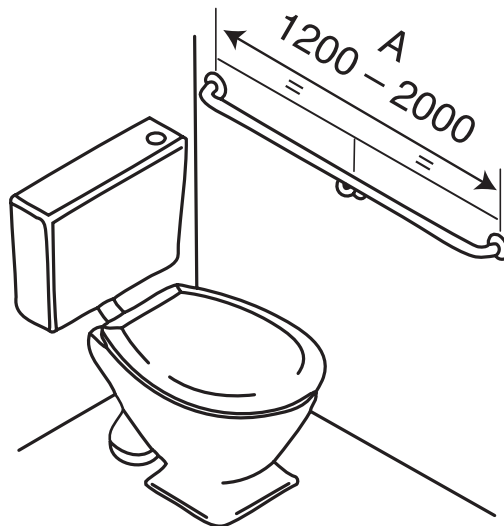
Fully welded construction in grade 304 stainless steel tube, 32mm diameter. Slip resistant Satin Stainless Steel with flange covers. Easy to install on most building surfaces (fixings supplied by others) designed for maximum strength and user confidence. Lengths are 1200mm, 1500mm, 1800mm or 2000mm fitted to back wall with underslung (to specify size: BT8X1500 for 1500mm length). Conforms to AS1428.1-2009. Bendtech™ products are made to the highest standards and currently the only TGA registered grab rail manufacturer in Australia.

### Options

Polished stainless steel, powder coated finish, knurled or sure grip finishes. Available in Clean Seal flange system (see Clean Seal specification sheet BT-8 CS 32mm diameter), available Exposed Fix or Vandal Proof.

### Guarantee

Bendtech™ products are fully guaranteed against faulty workmanship and material defects subject to normal wear and tear of the product for a period of 5 years.



*Left Hand Image Shown*

