

OZONE

HIRE THIS SPACE →



Booking enquires

bookings@ozoncoffee.co.uk

Eatery hire

01.05.24

Certified



Corporation

OZONE

OUR LOCATIONS

Award winning eateries combining welcoming environments, specialty coffee, a commitment to local suppliers, minimising waste, and of course, flavour on the plate.

We have many options when it comes to venues for your event. From conference, afternoon meeting, photoshoot, party or even wedding, our aim is to be the ultimate host! Site options below, please take a look for the right space for you.

Entirely designed to work around your needs, our hospitality experts can be on-hand to serve drinks and snacks, or perhaps you'll choose to let our chefs cook up a feast from our acclaimed sustainable menu. If you need help deciding or want to run through the options, don't hesitate to drop us a message [here](#).



London, EC2A 4AQ



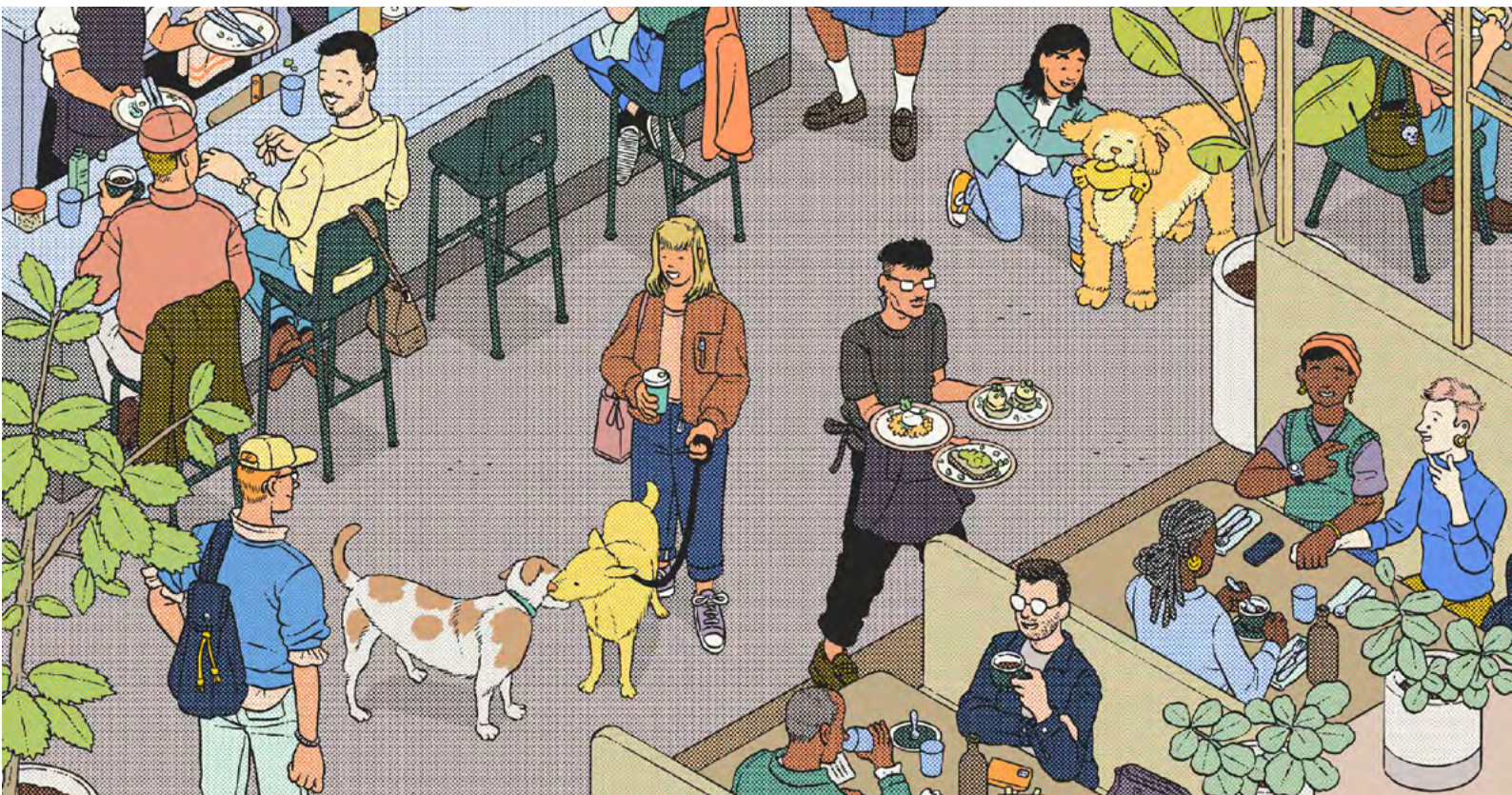
London, E2 9AP



All sites



London, EC4M 7AW



OZONE

Leonard Street



In the heart of Shoreditch, Leonard Street was our first Ozone venue in London and is located just a 2-minute walk from Old Street station. Sitting unassumingly in the midst of the buzzing surrounds, the space originally housed our roastery and has grown to be recognised as one of the capital's brunch and coffee institutes. Echoing the building's industrial past, your guests will be wowed by the raw finish and enjoy exclusive access across two floors.

With a capacity for 80 guests, the space centres around our large open kitchen and bar. In-built booth seating, as well as a large, private meeting room make this a versatile, characterful venue that's ideal for Christmas parties, team dinners and those celebrations that deserve somewhere extra-special.

Entirely designed to work around your needs, our hospitality experts can be on-hand to serve drinks and snacks, or perhaps you'll choose to let our chefs cook up a feast from our acclaimed sustainable menu. If you need help deciding or want to run through the options, don't hesitate to drop us a message here.

Main eatery hire

Fees hours

Venue hire only: £500ph minimum 2hr

With food/beverage: . . £3500 minimum spend
(menus available on request)

Hire times

6pm – 11.30pm

Max occupancy

60pax Seated
80pax Standing

Menus

Nibbles & drinks. from £28pp
Feasting from £40pp
2/3 courses from £45/£55pp
Minimum spend £3500

Eatery floorplan →

Booking enquires

bookings@ozoncoffee.co.uk

Eatery hire
01.05.24

ozoncoffee.co.uk

OZONE

Leonard Street

COFFEE
→



OZONE

Emma Street



Home to our head office, training rooms, tech, café, kitchen and restaurant space, our Emma Street location is a welcoming hub for the Bethnal Green community and will make for a winning venue for your next private event. Its proximity to East London highlights including London Fields and Broadway Market make for easy transport links and thriving surrounds.

Accommodating up to 100 people with ample space for dining, talks, drinks and dancing, our team of hospitality experts are ready with everything on-hand to make sure your event runs without a hitch and you're left with perfect memories. From our professional kitchen and bar, we can produce show-stopping drinks and canapes, right through to a bespoke menu based on our sustainable menu. For any enquiries, don't hesitate to drop us a message here.

A modern, bright and highly flexible building, the bespoke space was refurbished in 2019, led by an award-winning architect and design studio to mirror the relaxed tones of our New Zealand venues and hometown.

As you step through the door the building unfolds into an expansive, accessible room and you're guided by a giant stainless steel and concrete bar which serves to divide the space between service and guests. Custom-built booths run the length of the wall, accommodating large groups whilst traditional seating and tables are set in the centre of the room for big parties.

With its carefully chosen materials, this venue offers a sleek, utilitarian palette to contrast beautifully with the industrial surrounds for an event space unlike any other.

Eatery hire

Fees

Venue hire only: £500ph
minimum 2 hours

With food/beverage: .. £3500
minimum spend
(menus available on request)

Hire times

6pm – 10pm

Max occupancy

80pax Seated
100pax Standing

Menus

Nibbles & drinks. from £28pp
Feasting from £40pp
2/3 courses from £45/£55pp
Minimum spend £3500

Eatery floorplan →

Booking enquires

bookings@ozoncoffee.co.uk

OZONE

Emma Street



OZONE

Photoshoots & Filming

COFFEE
→

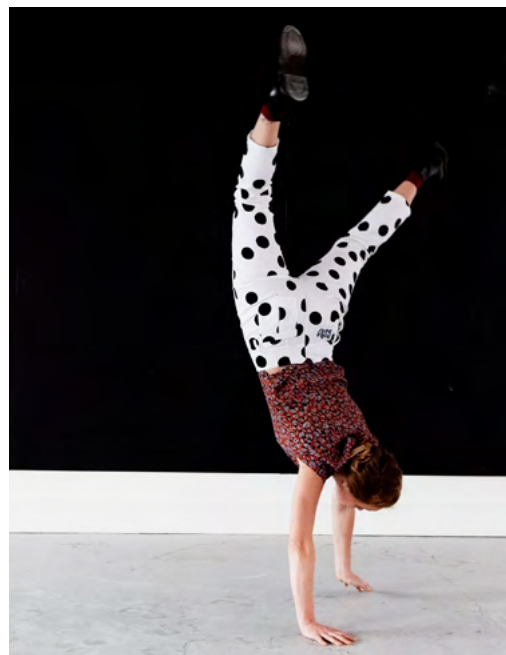


Whether you're in need of a professional kitchen, fully stocked bar or a creative, adaptable space for your next shoot, both of our locations are available for your undisturbed use.

With their mix of functional, yet beautifully understated materials, our venues maintain a utilitarian, aesthetic for you to dress to your needs, or benefit from their clean, existing bases for a distraction-free setting. Used to convey authentic lifestyle environments, showstopping kitchen scenes and upmarket backdrops to fashion shoots, we have opened the doors to numerous creative teams over the years at our London venues.

Practicalities are taken care of with power supply readily accessible and safe storage space in abundance for your equipment. Should you wish, our hospitality team can be on-hand to ensure refreshments and catering so that you can focus on what you do best.

Any booking enquires please email bookings@ozoncoffee.co.uk



OZONE

Meeting Room



Looking for a space that's not just practical but one which will add some magic to your next work meeting? Our Old Street eatery offers the perfect location and if available from as little as £60 per hour. Perfect for breakfast briefings, your next big pitch, team get-togethers or just a break from the home-office.

Comfortably seating 10 people, the large, private meeting room is equipped with AV equipment, screen and dependable wi-fi. At your request, we can ensure a steady stream of delicious Ozone coffee and refreshments brought directly to your meeting room.

Meeting room hire

Fees	Full day £300 minimum spend*
	Half day £200 minimum spend*
	Hourly £60 plus F&B

Hire times 8am – 4pm, Mon – Fri

Max occupancy 10pax
Food and drinks to be ordered from al la carte menu, charged as extra.

* Both half and full day hire is a minimum spend fee. Food and beverage from the everyday menu can be ordered. If this total is not met in food and beverage sales, outstanding cost of room hire fee will be added. This excludes retail/takeaway items.

