

 SYMMETRY
desking
2010



Contents

4
Symmetry Executive



6
Symmetry Operator



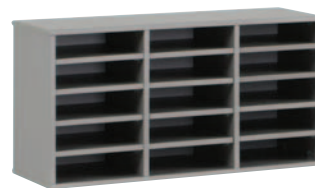
8
Symmetry Furniture



10
Storage



11
Options



Functional & modern— Fast

Whether you need functional, everyday furniture, or modern inspirational furniture, our carefully selected **Symmetry Desking** range will provide your ultimate solution. The **Symmetry Desking** range is available for fast **quick-ship** delivery Australia wide.

Specially for you

Symmetry Desking systems furniture is **designed for Australian conditions** and supports all aspects of your business - desks for executives and workstations for open offices, storage for files and storage for stationery, tables for cafeterias and tables for meetings.

Built to last

Work surfaces are subject to a high degree of wear in offices, so all **Symmetry Desking** furniture is constructed from melamine faced furniture grade particleboard.

Melamine is one of the **most durable** conventional furniture surfaces available.

Durability of the edging rates next in importance to the surface material. Our experience leads us to use Solid ABS hard-edge which is **permanently bonded** to all exposed edges. Hard-edging is **impact resistant** and provides an almost seamless wood grain appearance.

Load bearing panels on desks and workstations, such as tops and sides, are constructed from Heavy Duty 25mm substrate. 18mm thickness backs to all storage units to ensure that your furniture is robust and built to last. All fabric on screens is foam-backed, bonded to substrate.

Good Wood

AMS Group is a responsible corporate citizen that is concerned about caring for the environment in which we live and work. To meet increasing demand for even more environmentally friendly building products, we also have an ultra-low emission EO board available on request. EO board is recognised by ECO Specifier and is suitable for use in all Green Star Rated buildings to enhance the overall environmental performance ratings.

95% of the timber substrate used in our furniture is obtained from sustainable forests, 70% from FSC certified forest plantations and includes 75% pre-consumer recycled content & 10% post-consumer recycled content. Our melamine panels have a high **'E1' Grade** rating and, of course, conform to the Australian LFE Emission Standard. Panels meet World Health Organisation (WHO) requirements as a non-toxic material and are recyclable – in short **eco-friendly!**

You know you are **buying responsibly** when you see the Good Wood mark.

Peace of mind – Guaranteed

All **Symmetry Desking** furniture is guaranteed against faulty parts and workmanship for 5 years of normal use (8 hours/day). As common sense dictates, we make it a condition that you use your furniture for the purpose it was designed for.

Symmetry Executive

SMD2196

Symmetry Manager Desk/Return

- 2100 x 900 desk
- 900 x 600 return
- 25mm top
- Symmetry legs with support rails under
- Metal perforated modesty
- Silver powdercoat

SC20

Symmetry 2000 Cupboard

- 2000H x 900W x 450D
- Solid 18mm back
- Hinged doors to front with Symmetry handles
- Locking optional

SB20

Symmetry Bookcase

- 2000H x 900W x 320D
- Solid 18mm back
- 25mm thickness adjustable shelves

SGMD2196

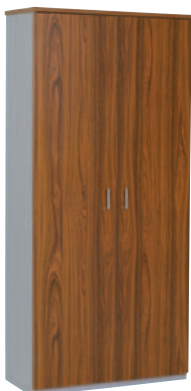
Symmetry Gable Manager Desk/Return

- 2100 x 900 Desk
- 900 x 600 Return
- 25mm top
- Gable 25mm slabends with adjustable feet
- 18mm modesty panels under



4

SC20



SB20



SMD2196



SGMD2196





5

**FIVE
YEAR**
GUARANTEE

Symmetry Desking offers an unparalleled level of quality and style at an affordable price. A large range of standard sizes are available, allowing you to design the office of your dreams.

Executive furniture shown in Queensland Teak/Brushed Aluminium finish.

 **SYMMETRY**
desking

Symmetry Operator

SCW187

Symmetry Corner Workstation

- 1800 x 1800 x 750D x 720H
- 25mm top
- Cable access port
- Symmetry legs
- Support rails under

SOD18

Symmetry Open Desk

- 1800 x 750 x 720H
- 25mm top
- Cable access port optional
- Symmetry legs
- Support rails under

SBU18

Symmetry Buffet Unit

- 1800W x 600D x 720H
- 25mm top
- Hinged doors to front
- Locking optional

SHD09

Symmetry Hutch with Doors

- 1280H x 900W x 350D
- Hinged doors above 500mm
- Locking optional
- 18mm solid back

6



SOH18



SBU18

SHD09



SUF2

SCC03



SOD18



SM2F



SLF2

Symmetry Lateral File

- 720H x 900W x 600D
- 2 x drawers with lateral filing within
- Locking optional

SCC03

Symmetry Coat Cupboard

- 2000H x 300W x 600D
- Fixed shelf within
- Hinged door to front with mirror within
- Coat rail within
- Locking optional

SOH18

Symmetry Open Hutch

- 1280H x 1800W x 320D
- Fixed shelf at 500mm with centre divider above
- 18mm solid back
- Adjustable shelf

SM2F

Symmetry Mobile Pedestal

- 2 drawer + 1 file
- Metal drawer system
- Locking optional



7

**FIVE
YEAR**
GUARANTEE

Symmetry Operator furniture enables you to completely customise your office. A complete range of storage options ensures that there will be a place for everything!

Symmetry furniture shown in Young Beech/Brushed Aluminium finish.

SYMMETRY
desking

Symmetry Furniture

SMD2196

Symmetry Manager Desk/Return

- 2100 x 900 desk
- 900 x 600 return
- 25mm top
- Symmetry legs with support rails under
- Metal perforated modesty
- Silver powdercoat

SGD2109

Symmetry Gable Manager Desk

- 2100L x 900W x 720H
- 25mm top
- Gable 25mm slabends
- Adjustable feet
- 18mm modesty panel under

SM2F

Symmetry Mobile Pedestal

- 2 drawer + 1 file
- Metal drawer system
- Locking optional

SB20

Symmetry Bookcase

- 2000H x 900W x 320D
- Solid 18mm back
- 25mm thickness adjustable shelves

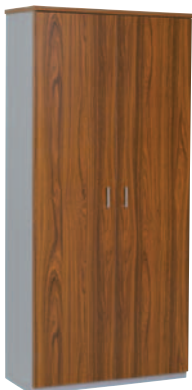
SC20

Symmetry 2000 Cupboard

- 2000H x 900W x 450D
- Solid 18mm back
- Hinged doors to front with Symmetry handles
- Locking optional



SC20



SB20



SGD2109



SM2F





SYMMETRY SQUARE COFFEE TABLE

- 25mm cruciform base
- 600 or 750mm wide
- Brushed aluminium base

SYMMETRY ROUND COFFEE TABLE

- 25mm cruciform base
- 600 or 900mm diameter top
- Brushed aluminium base

SYMMETRY RECTANGULAR COFFEE TABLE

- 1200 x 600mm top
- Brushed Aluminium base

VENICE CUBE COFFEE TABLE

- Mitred vertical corner edge detail
- 600H x 600W



**FIVE
YEAR
GUARANTEE**

The Symmetry range of furniture is robust and designed to withstand years of hard work. All Gable slabends are 25mm with adjustable feet for levelling, and all furniture back panels are 18mm thick, ensuring maximum strength is achieved.

Symmetry furniture shown in Queensland Teak/Brushed Aluminium. Our range of coffee tables provides a smart look at an affordable price.



Storage



SM2F

SM2F

- Symmetry Mobile Pedestal
- 2 drawer + 1 file
 - Metal drawer system
 - Locking optional



SYMMETRY ROUND COFFEE TABLE

- 25mm cruciform base
- 600 or 950mm diameter top
- Brushed aluminium base



SYMMETRY SQUARE COFFEE TABLE

- 25mm cruciform base
- 600 or 750mm wide
- Brushed aluminium base



SLF2

SLF2

- Symmetry Lateral File
- 720H x 900W x 600D
 - 2 x drawers with lateral filing within
 - Locking optional



SCZ09

SCZ09

- Symmetry 900 Credenza
- 720H x 900W x 450D
 - Solid 18mm back for rigidity
 - Sliding doors to front
 - Locking optional



SBV18

SBV18

- Symmetry Buffet Unit
- 1800W x 600D x 720W
 - 25mm top
 - Hinged doors to front
 - Locking optional



SOH18

SOH18

- Symmetry Open Hutch
- 1280H x 1800W x 320D
 - Fixed shelf at 500mm with centre divider above
 - 18mm solid back
 - Adjustable shelf



SHD09

SLF2

SHD09

- Symmetry Hutch with doors
- 1280H x 900W x 350D



SCC03

SCC03

- Symmetry Coat Cupboard
- 2000H x 300W x 600D
 - Fixed shelf within
 - Hinged door to front with mirror within
 - Coat rail within
 - Locking optional



SB20

SB20

- Symmetry Bookcase
- 2000H x 900W x 320D
 - Solid 18mm back
 - 25mm thickness adjustable shelves

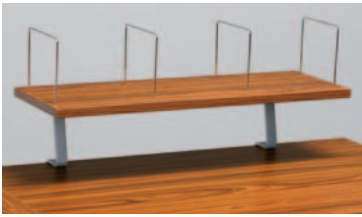


SC20

SC20

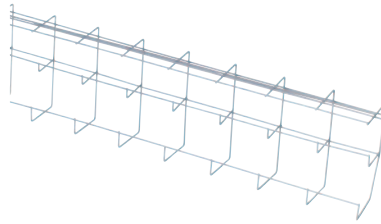
- Symmetry 2000 Cupboard
- 2000H x 900W x 450D
 - Solid 18mm back
 - Hinged doors to front with Symmetry handles
 - Locking optional

Options



CBDMS9

- Desk Mounted Shelf
- 25mm shelf 900W x 300D
 - 4 x chrome dividers
 - Silver supports



SCB

- Cable Basket
- Two-tiered
 - Silver powdercoat finish
 - 1050W, 1350W or 1650W available



BBDPR

- Below Desk Power/Data Rail
- Quad GPO soft-wired
 - 4 x RJ45 data bezels
 - Silver finish



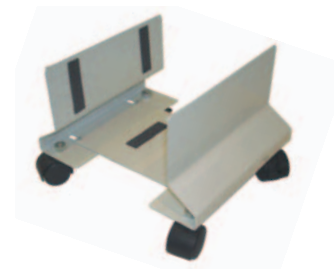
DMMA

- Desk Mounted Monitor Arm
- Silver finish
 - 15kg rating
 - Bolt through version optional



DMCPUH

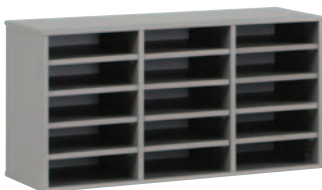
- Desk Mounted CPU Holder
- Pull out/swivel
 - Silver finish



CPUHC

- CPU Holder on Castors
- Adjustable width
 - Silver finish

11



PHU

- Pigeon Hole Unit
- Brushed aluminium finish
 - Adjustable shelves
 - 500H x 900W x 320D



STATUS MEETING TABLE BLACK

- Up to 1050mm diameter top
- Black powdercoat finish
- 550mm diameter metal spun base
- Chrome base option



MPFM

- Metal Modesty Panel
- Robust perforated panel
 - Silver powdercoat
 - Easily fits under worktop
 - 1200, 1500, 1800W

**FIVE
YEAR
GUARANTEE**

Symmetry supports your business with storage solutions that work. When designing your office with Symmetry, you are only limited by your imagination! Products can be customised to suit your individual needs.

Our standard range of twelve stock finishes will provide you with the choice you need, although alternative finishes are available on request - POA.

SYMMETRY
desking



© AMS Furniture Systems. December 2009. All rights reserved.

Whilst every effort has been made to ensure the information in this brochure is accurate at time of printing, AMS reserves the right to change any or all product details without prior notice. No part of this publication may be reproduced without permission.