

Anchormat®

THE ORIGINAL CHAIR MAT
SINCE 1975 AND STILL THE *Best*

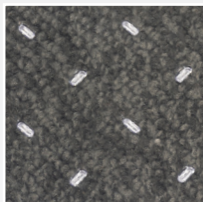


CODE	DESCRIPTION
------	-------------

AMH34G	Secretary (Keyhole) 915 x 1220mm
--------	-------------------------------------

AMH45G	Executive (Keyhole) 1150 x 1350mm
--------	--------------------------------------

AMH50G	Diplomat (Rectangle) 1160 x 1510mm
--------	---------------------------------------

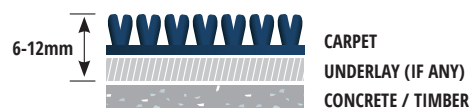


New enhanced
Anchor pattern

ANCHORMAT HEAVYWEIGHT

FEATURES

- Used on commercial carpets 6 - 12mm thick including underlay.
- Protects floor coverings from wear and tear from chair castors.
- Greatly reduces wear on office chair wheels and bases.
- Allows chair wheel movements to be easier on your back.
- New enhanced anchor pattern minimises movement, protects floors from damage and is safer and easier to handle.
- Can be fully recycled after use.
- Contains no banned substances.
- 12 year limited warranty.



Anchormat®

THE ORIGINAL CHAIR MAT
SINCE 1975 AND STILL THE *Best*

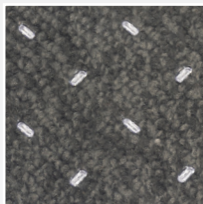


CODE	DESCRIPTION
------	-------------

AMD34G	Secretary (Keyhole) 915 x 1220mm
--------	-------------------------------------

AMD45G	Executive (Keyhole) 1150 x 1350mm
--------	--------------------------------------

AMD50G	Diplomat (Rectangle) 1160 x 1510mm
--------	---------------------------------------

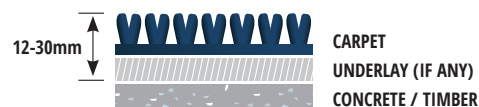


New enhanced
Anchor pattern

ANCHORMAT DELUXE

FEATURES

- Used on commercial carpets 12 - 30mm thick including underlay.
- Protects floor coverings from wear and tear from chair castors.
- Greatly reduces wear on office chair wheels and bases.
- Allows chair wheel movements to be easier on your back.
- New enhanced anchor pattern minimises movement, protects floors from damage and is safer and easier to handle.
- Can be fully recycled after use.
- Contains no banned substances.
- 12 year limited warranty.



Anchormat®

THE ORIGINAL CHAIR MAT
SINCE 1975 AND STILL THE *Best*

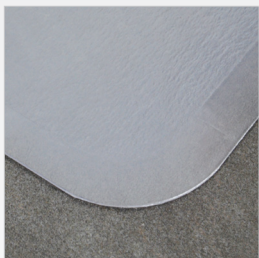


CODE	DESCRIPTION
------	-------------

AMH34S	Secretary (Keyhole) 915 x 1220mm
--------	-------------------------------------

AMH45S	Executive (Keyhole) 1150 x 1350mm
--------	--------------------------------------

AMH50S	Diplomat (Rectangle) 1160 x 1510mm
--------	---------------------------------------



ANCHORMAT NO ANCHORS

FEATURES

- Used on hard floors such as tiles, timber, polished concrete or vinyl.
- Protects floor coverings from wear and tear from chair castors.
- Greatly reduces wear on office chair wheels and bases.
- Allows chair wheel movements to be easier on your back.
- Can be fully recycled after use.
- Contains no banned substances.
- 12 year limited warranty.