

## Status Workstations

The Status Workstation System features a modern leg design providing a desk system that is both appealing and functional. With clean, sharp lines, this robust frame has minimal components that are all interchangeable. This makes reconfiguration easy allowing for growth and flexibility in your office environment. Using a range of components from the Status Workstation system, an almost limitless number of sophisticated configurations can be achievable.

Status comes standard with White Powder Coated Triangular Legs and Frames, White Melamine Tops and Screens in either Sketch or Fossil. Other top and screen colours are available on request.



### DOUBLE DESKS

#### Features:

- Available 1500 x 1500mm & 1800 x 1500mm
- White Powder Coated Triangular Legs and Frame
- 25mm Melamine Table Tops in White (Other Colours available POA)
- Desk Top Mounted Separation Screens available at 350H x 1500W & 350H x 1800W
- Standard Fabric Screen Colour – Sketch
- 5 Year Warranty

## Status Workstations



DESK AND RETURN - MANAGER

### DESK AND RETURN - WORKSTATION

#### Features:

- Desk available 1500 x 750mm & 1800 x 750mm
- Return available 1050 x 600mm & 900 x 600mm
- White Powder Coated Triangular Legs and Frame
- 25mm Melamine Table Tops in White
- Desk Mounted Separation Screens available at 725H x 1500W & 725H x 1800W
- Standard Fabric Screen Colour – Fossil
- 5 Year Warranty

\* Matching White Powder Coated Modesty Panel available (not pictured)



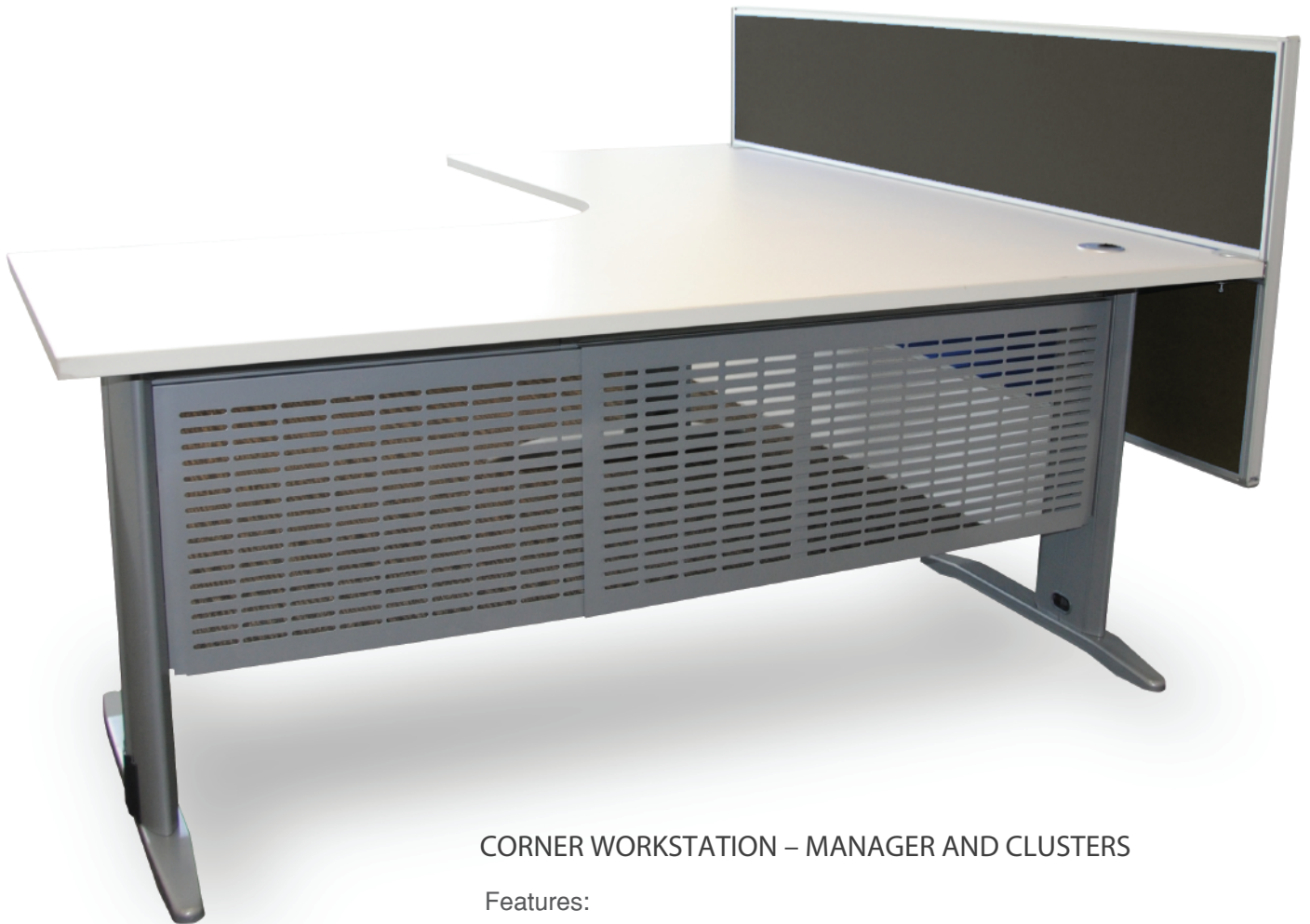
DESK AND RETURN - WORKSTATION



## Cruze Workstations

The Cruze Workstation Range is a modern and flexible system based around the stylish Cruze leg and adjustable beams featuring inbuilt cable management channels. Utilising the standard components Cruze can be supplied in an almost limitless range of configurations and suits many varied uses. Whether you require free-standing desks or a workstation installation Cruze can provide the solution.

Available for immediate delivery we offer workstations or free-standing desks in both corner and rectangular with white melamine tops as well as desk mounted screens in two colours. Custom colours and sizes are also available on request.



### CORNER WORKSTATION – MANAGER AND CLUSTERS

#### Features:

- Available Dimensions – 1800 x 1800 x 750D
- Silver Powder Coated Systems Legs and Beams
- 25mm Melamine Table Tops in White ( Other Colours available POA )
- Desk Mounted Separation Screens available at 725H x 1500W & 725H x 1800W
- Fabrics Colours – Sketch and Fossil
- Optional – Matching Metal Modesty Panel
- Optional – Matching Metal Mobile Drawer Pedestal
- 5 Year Warranty

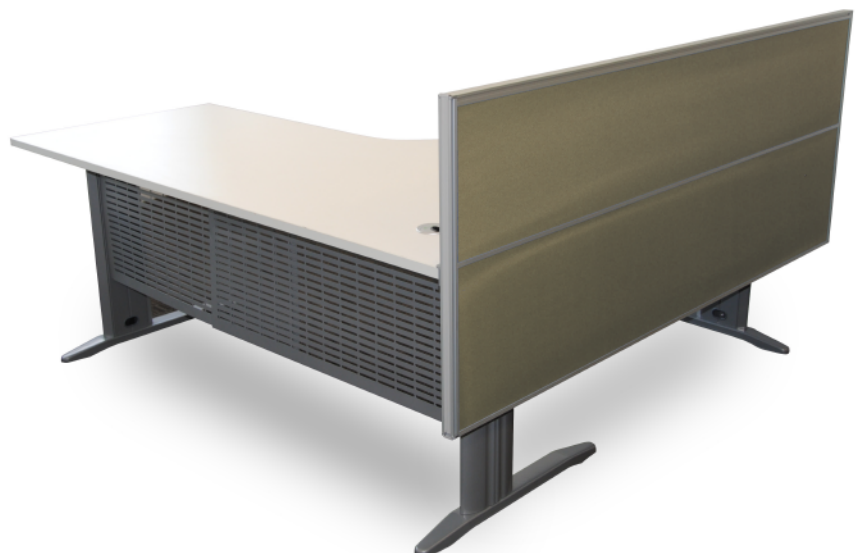
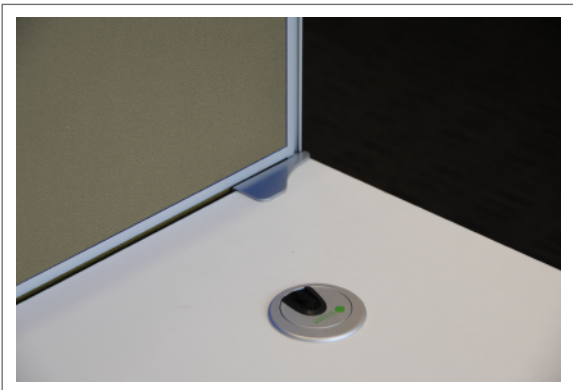
## Cruze Workstations



### STRAIGHT DESKS

#### Features:

- Available 1800 x 750mm & 1500 x 750mm
- Silver Powder Coated Systems Legs and Beam
- 25mm Melamine Table Tops in White (Other Colours available POA)
- Desk Mounted Separation Screens available at 725H x 1500W & 725H x 1800W
- Fabrics Colours – Sketch and Fossil
- Optional – Matching Metal Modesty Panel
- Optional – Matching Metal Mobile Drawer Pedestal
- 5 Year Warranty



## DIAMOND WORKSTATION SYSTEM



Functional and flexible the Diamond Workstation System can be tailored to suit any Office and décor. Features include robustly built steel frames with a white powder coated finish and durable melamine Worktops with a sharks nose edge detail. Diamond Separation Screens can be supplied in a number of sizes, colours and configurations.

Diamond Workstations as standard are supplied with White Frames, White Melamine Top and Screens in either Sketch or Fossil Fabric. Custom colours, sizes and fabrics are available POA.

### FEATURES:

- Top sizes - 1500 x 750mm & 1800 x 750mm
- White Powder Coated Frames, Shared Legs where Tops meet
- 25mm Melamine Tops in White, with Sharknose Edge ( Other options available POA )
- Desk Top Mounted Separation Screens 350H x 1500W & 350H x 1800W
- Standard Screen Fabrics – Sketch or Fossil ( Other selections POA )
- 5 Year Warranty



## DIAMOND WHITE EXECUTIVE SETTING



Modern and stylish the Diamond Executive Suite features a white powder coated frame and fittings accented with Walnut Melamine Worktops with a sharks nose edge.

### FEATURES:

- Desk and Return with Walnut Melamine Top and Modesty
- Desk 2000 x 900mm / Return 1200 x 600mm
- Diamond Melamine Mobile Pedestal 420W x 520D x 640H
- Diamond Credenza 1800 x 450 x 900 H





## Forme Floor Based Separation Screens

Forme Floor Based Separation Screens provide a stylish and cost effective solution to partitioning new or existing Workstations. Available in 4 sizes and two colours for immediate delivery.



### Features:

- Aluminium Extrusion Powder coated Silver
- Fabric Bonded Inserts - Colours available – Sketch or Fossil
- Suitable for Free Standing or Screen Hung Workstations
- Sizes available – 1200H x 1500W x 30mm
  - 1200H x 1800W x 30mm
  - 1500H x 1500W x 30mm
  - 1500H x 1800W x 30mm
- 5 Year Warranty

### Optional Extras:

- Cruze Support Legs
- Forme Post Support Legs
- Forme Desk Top Support Brackets
- 25mm White Melamine Corner and Rectangular Worktops



## Helix Flip Top Table

The Helix Flip Top range of tables are versatile, flexible and suitable for a wide variety of uses including Board/Meeting Room, Conference and Training Tables.

As standard, these tables are offered with a 25mm White Melamine Top in two sizes. Available for immediate delivery with custom sizes and colours also available on request.



### Features:

- Flip Top Frame with Lockable Castors
- Black Powder Coated finish with Chrome Feet
- 25mm Melamine Top in White (Custom colours available POA)
- Sizes - 1800 x 900 x 720H or 1500 x 750 720H (Custom sizes available POA )
- 3 Year Warranty

Other images:





## Lotus Executive Chair



### Features:

- Synchronised seat and back tilting mechanisms lockable in 5 positions
- Tilt tension adjustment
- Unique mesh back design
- Single Lever Cable adjustment for all mechanical functions
- High density moulded seat foam
- Ratchet Back height adjustment
- Gas height adjustment
- Polished 5 star base
- Seat Slider as standard
- BIFMA Accreditation
- 5 Year Warranty

### DIMENSIONS: (mm)

Seat Width	520
Seat Depth	480
Back Height	560 - 640
Seat Height	470 - 580



## Forte Boardroom Chair

### Features:

- Synchronised Seat and Back Tilt Mechanism
- Height Adjustable
- Chrome Arms and Frame
- Chrome 5 Star Base
- Upholstered in Black Leather
- 3 Year Warranty

### DIMENSIONS: (mm)

Seat Width	500
Seat Depth	450
Back Height	470
Seat Height	440 - 510





## *Forte Client Chair*

### Features:

- Chrome Frame and Arms
- Polished Aluminium Base
- Black Leather Upholstery
- Fixed Height, Swivel Only
- 3 Year Warranty

### DIMENSIONS: (mm)

Seat Width	500
Seat Depth	450
Back Height	470
Seat Height	470







## *Forte Thick Pad - High Back*

### **FEATURES:**

- Synchronised Seat and Back Tilt Mechanism
- Seat Height Adjustable
- Chrome Arms and Frame
- Upholstered in Black Leather
- 3 Year Warranty

### **DIMENSIONS:**

Seat Width	510mm
Seat Depth	460mm
Back Height	600mm
Seat Height	500 - 570mm

### **OTHER IMAGES:**



## *Forte Thick Pad - Medium Back*



### **FEATURES:**

- Synchronised Seat and Back Tilt Mechanism
- Seat Height Adjustable
- Chrome Arms and Frame
- Upholstered in Black Leather
- 3 Year Warranty

### **DIMENSIONS:**

Seat Width	510mm
Seat Depth	460mm
Back Height	450mm
Seat Height	500 - 570mm

### **OTHER IMAGES:**





## Melbourne Mesh Chair

### FEATURES:

- Synchronised Seat and Back Tilt Mechanism
- Seat height adjustable
- Height adjustable Arms
- Live back technology
- Black high arch Base
- Black seat fabric, black mesh back
- 3 Year Warranty

### DIMENSIONS:

Seat Width	470mm
Seat Depth	480mm
Back Height	550mm
Seat Height	450 - 550mm

### OTHER IMAGES:







## Reflex Mesh Client Chair

### Features:

- Chrome Cantilever Frame
- Black Mesh Back, Black Fabric Seat
- Moulded Seat Foam
- Ratchet Back Height Adjustment
- 3 Year Warranty

### DIMENSIONS: (mm)

Seat Width	520
Seat Depth	500
Back Height	600 - 650
Seat Height	450

