

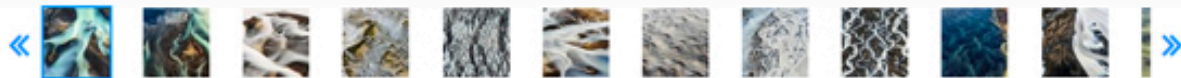
# The Terrible Beauty of Glaciers Melting and Oceans Rising

Daniel Beltra's aerial photographs reveal the human impact on nature

By **Saba Naseem**

SMITHSONIAN MAGAZINE | [SUBSCRIBE](#)

APRIL 2015



(©Daniel Beltrá, courtesy Catherine Edelman Gallery, Chicago)

The fluorescent, milky blue swirls in the photograph above might look like computer-generated imagery, but this is what **Daniel Beltrá** saw last July when he flew in an airplane 1,000 feet above Iceland's Olfusa River. The whitish streams in the otherwise crystalline waters are glacial sediment, traces of the 11 billion tons of ice vanishing from the island nation each year as a result of global warming. The Spanish-born Beltrá, who has also taken stunning aerial photographs of deforestation in the Amazon and of the BP Deepwater Horizon oil spill, calls attention to ecological devastation by depicting the consequences in arresting works of art—but not just for art's sake. Which is why his perspective is so apt this month, with its Earth Day tribute. "I want viewers to take the time to understand what they are looking at," Beltrá says, "and have a conversation about human impact on nature." For Icelanders, that impact touches their very name.