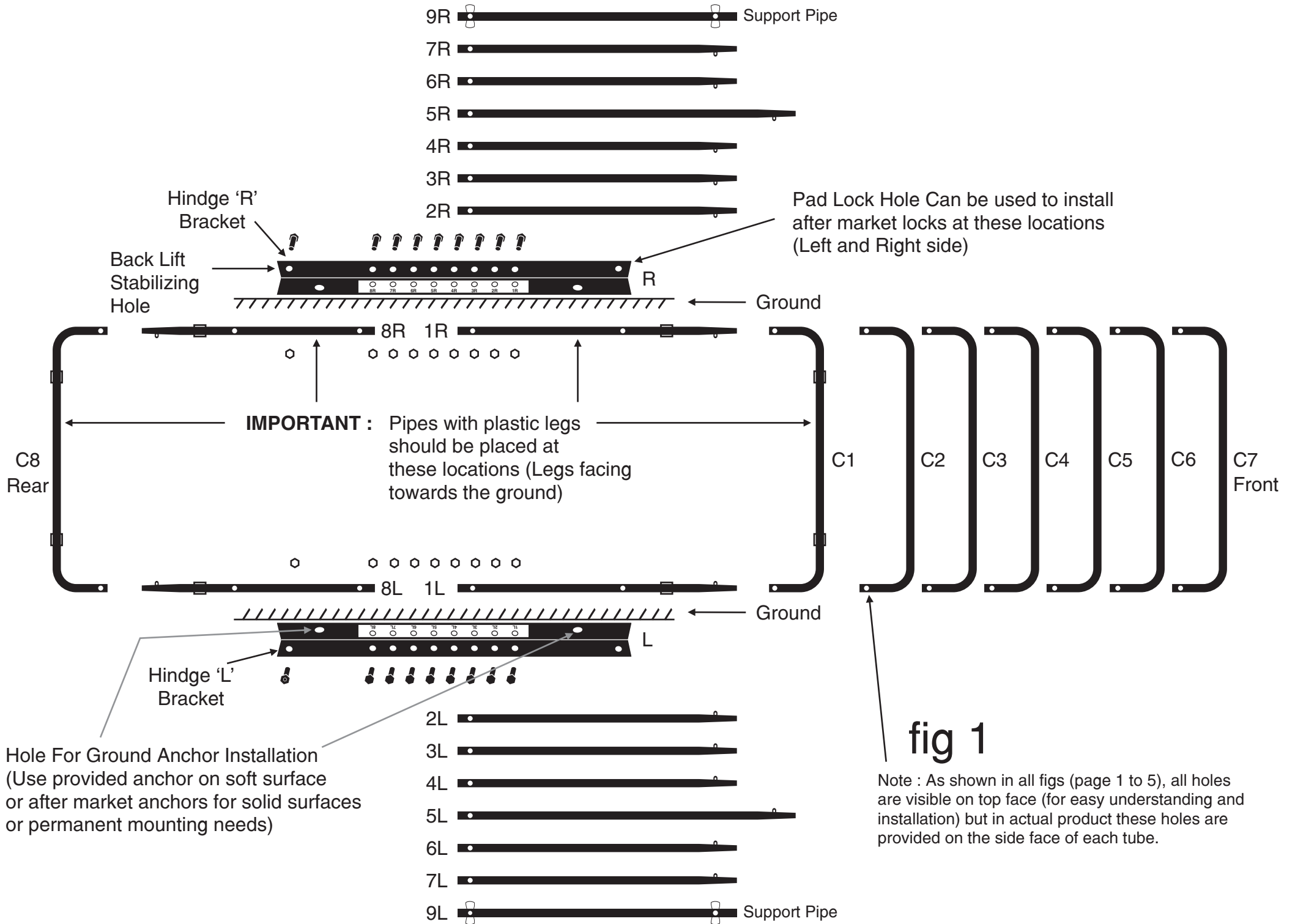


STEP 1 : Place all components on the ground as show in fig 1



STEP 2 : Attach tubes #1 & # 8 (L & R side) by using provided nuts & bolts to the corresponding holes on the 'L' Bracket including back lift stabilizing bolt & nut. (Note : Tubes should be connected on inner face of 'L' Bracket)
 Important : Make sure the Top Spring Nipples should be facing inwards.

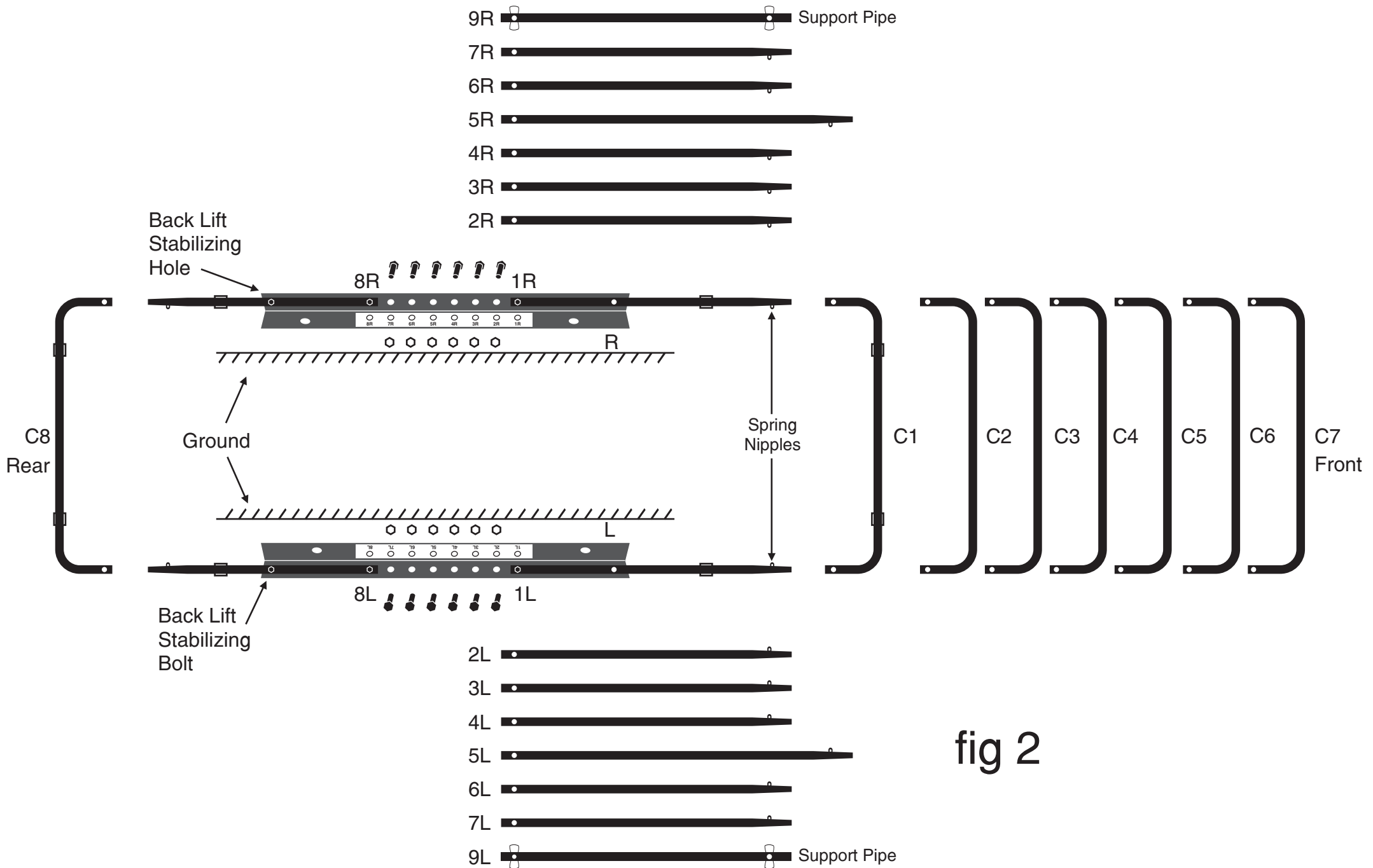


fig 2

STEP 3 : Snap the C tube C1 & C8 (with attached legs facing down) to the corresponding L & R tubes of #1 & #8, make sure that C tube should be inserted evenly on L & R side tubes to avoid a jam. Once inserted you will have to press the nipple installed at the end of each straight tube and push C tube till you hear a click and nipple comes through the hole of the C tube (As shown in fig. 3(A)).

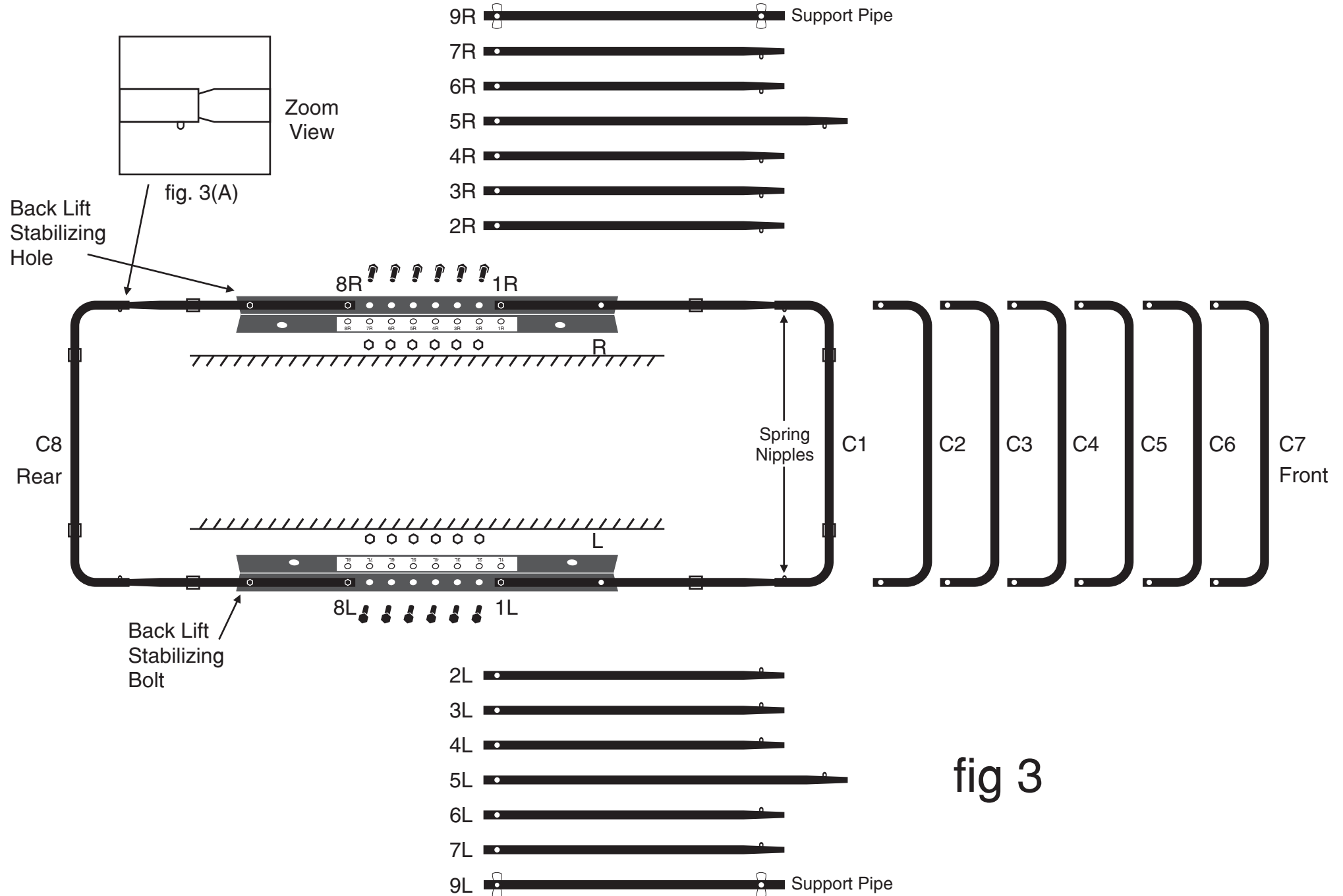
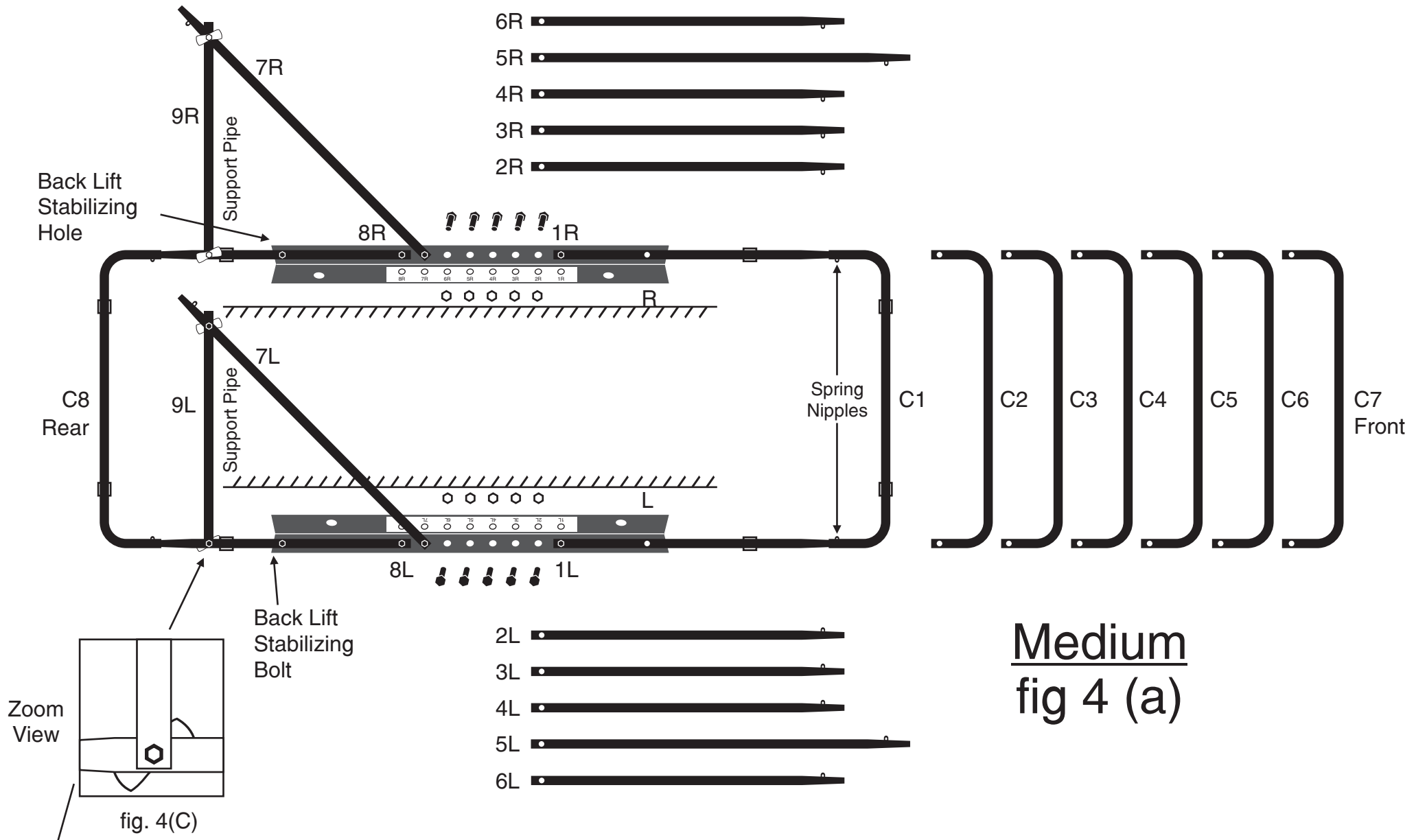
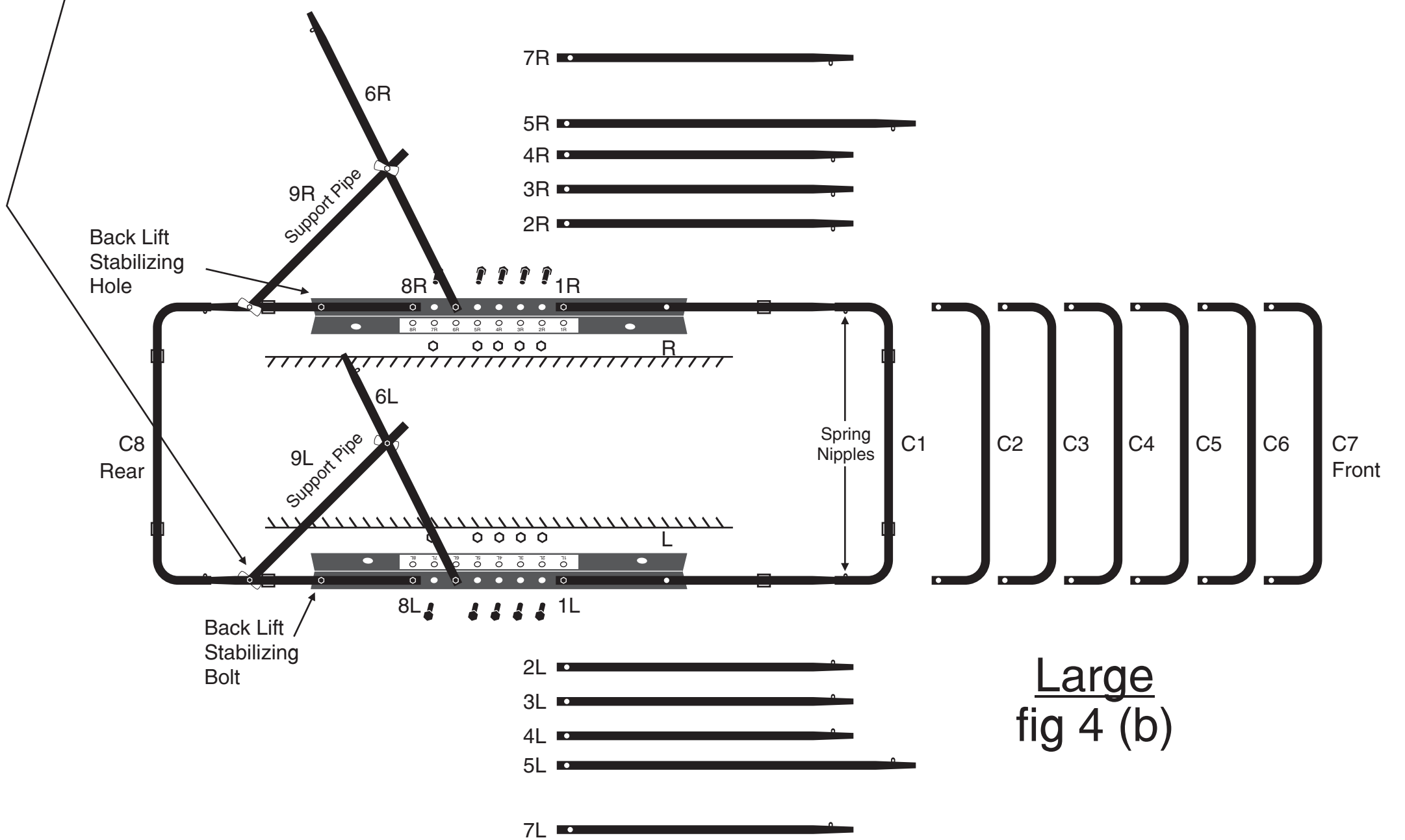


fig 3

STEP 4 : Medium size : Attach # 9 support pipe to the corresponding holes provided in # 8 & # 7 tube by using the provided fly nuts.
 Important : Support pipe on left and right should be attached on the outer face of # 8 & # 7 tube (As shown in fig. 4(C)).

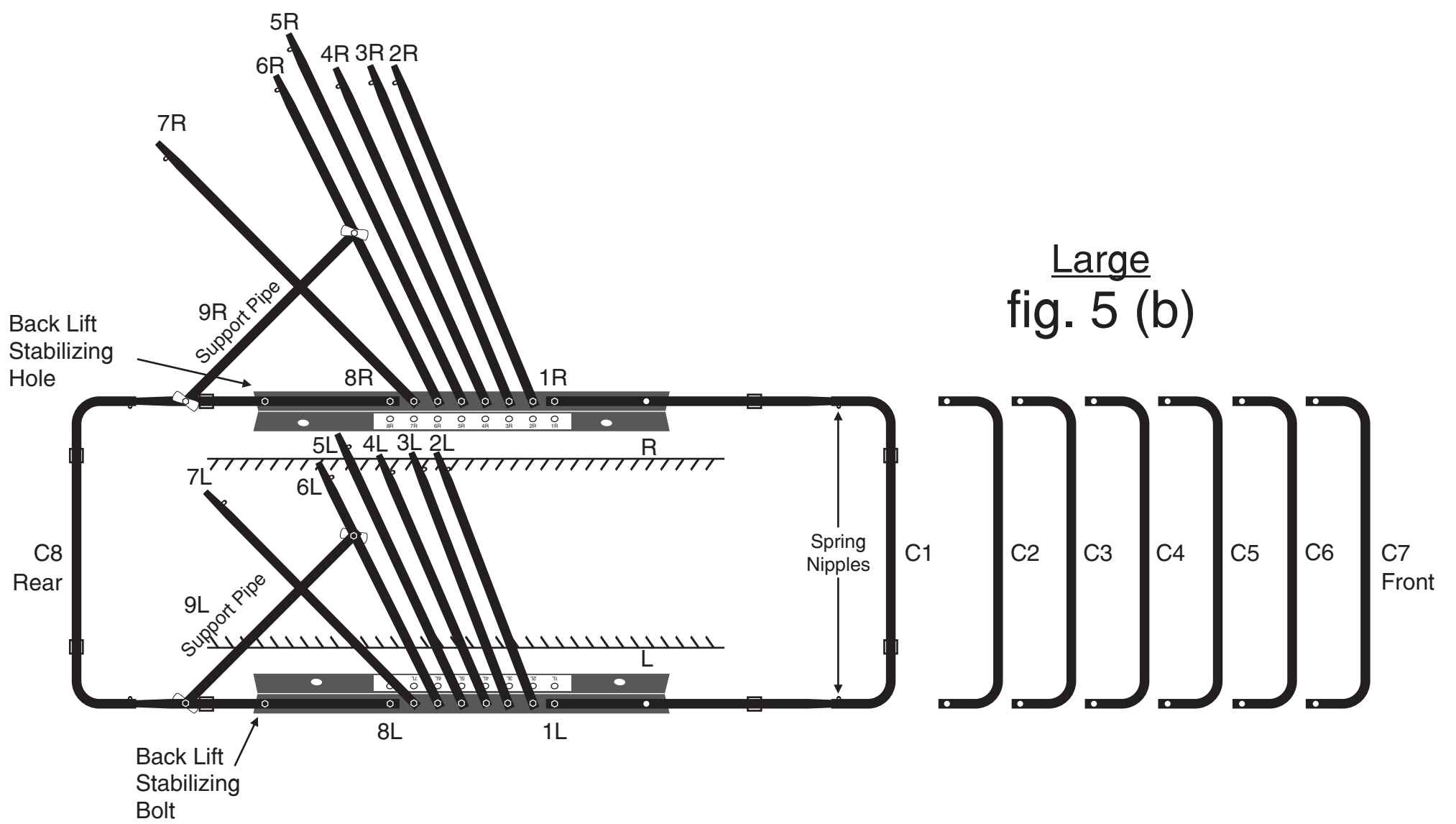
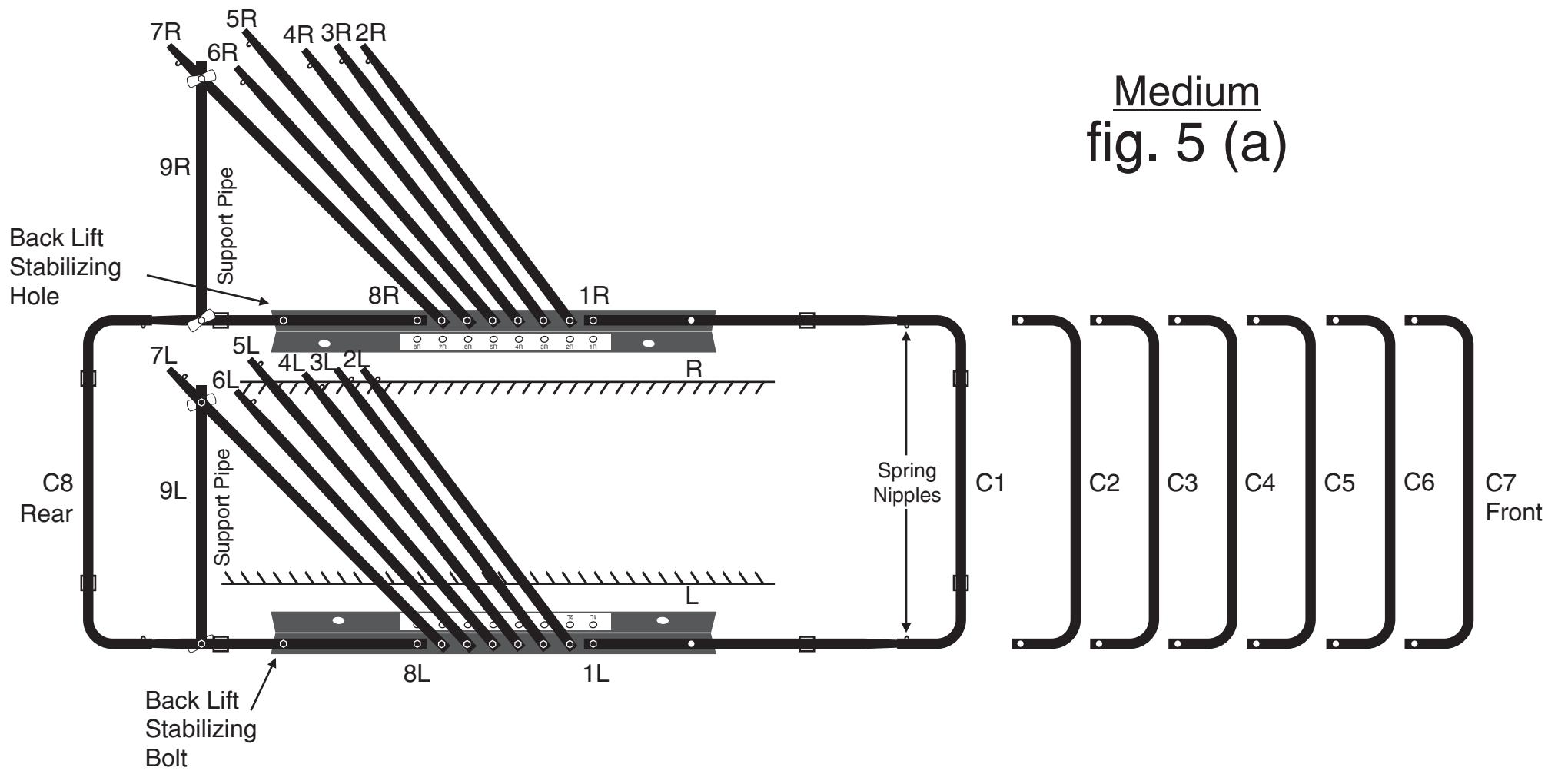


STEP 4 : Large size : Attach # 9 support pipe to the corresponding holes provided in # 8 & # 6 tube by using provided fly nuts.
 Important : Support pipe on left and right should be attached on the outer face of # 8 & # 6 tube (As shown in fig. 4(C)).

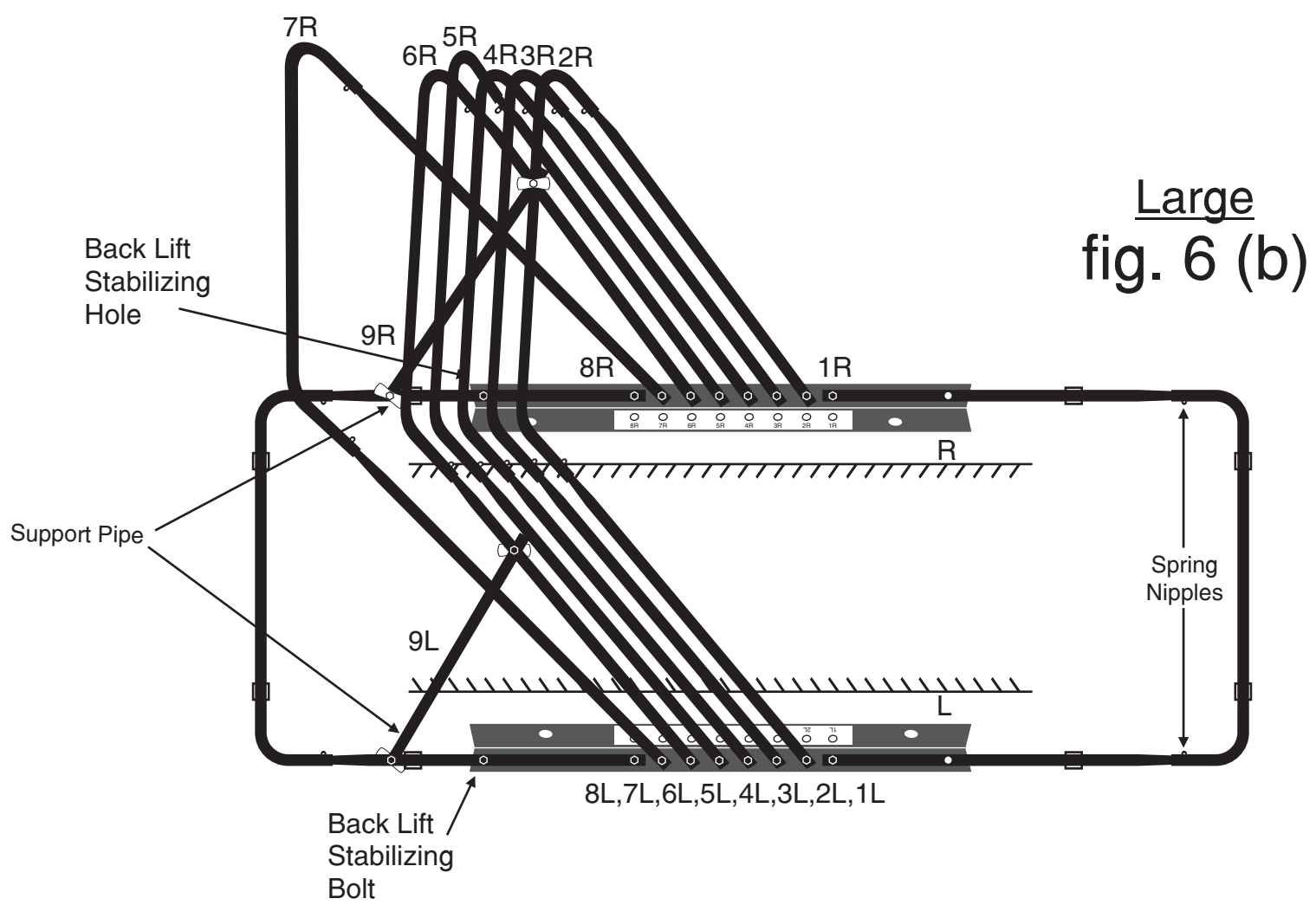
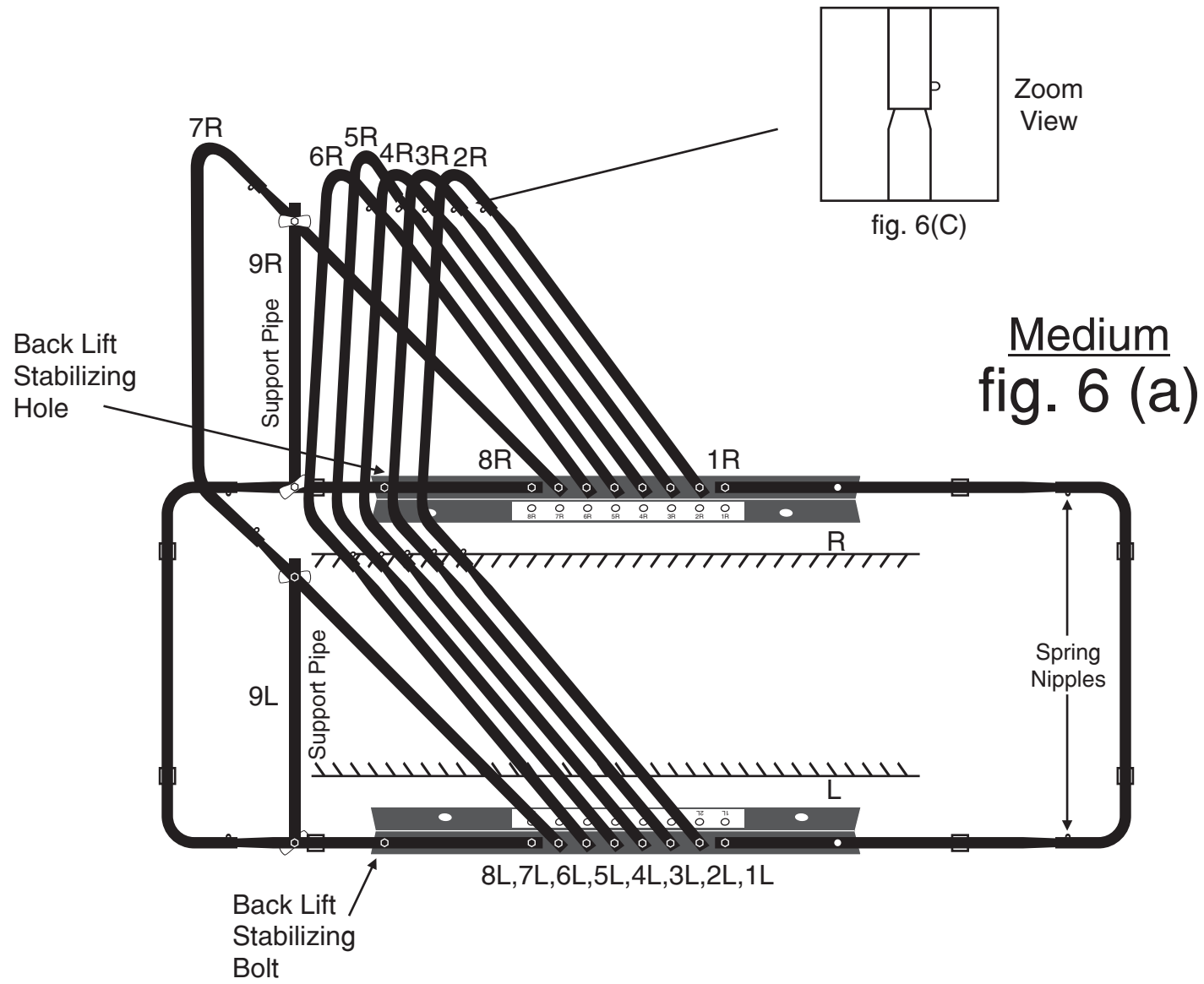


STEP 5 : Attach the balance straight tubes (L & R Sides) by using provided bolts & nuts to the corresponding holes on the "L" Bracket
 (Note : straight tubes should be connected on inner face of "L" Bracket)

Important : Make sure the top spring nipple should be facing inwards.
 Let these straight tubes rest over the # 7 (For Medium size garage) / # 6 (For Large size garage) to avoid jaming or twisting near the "L" Bracket attachment location.



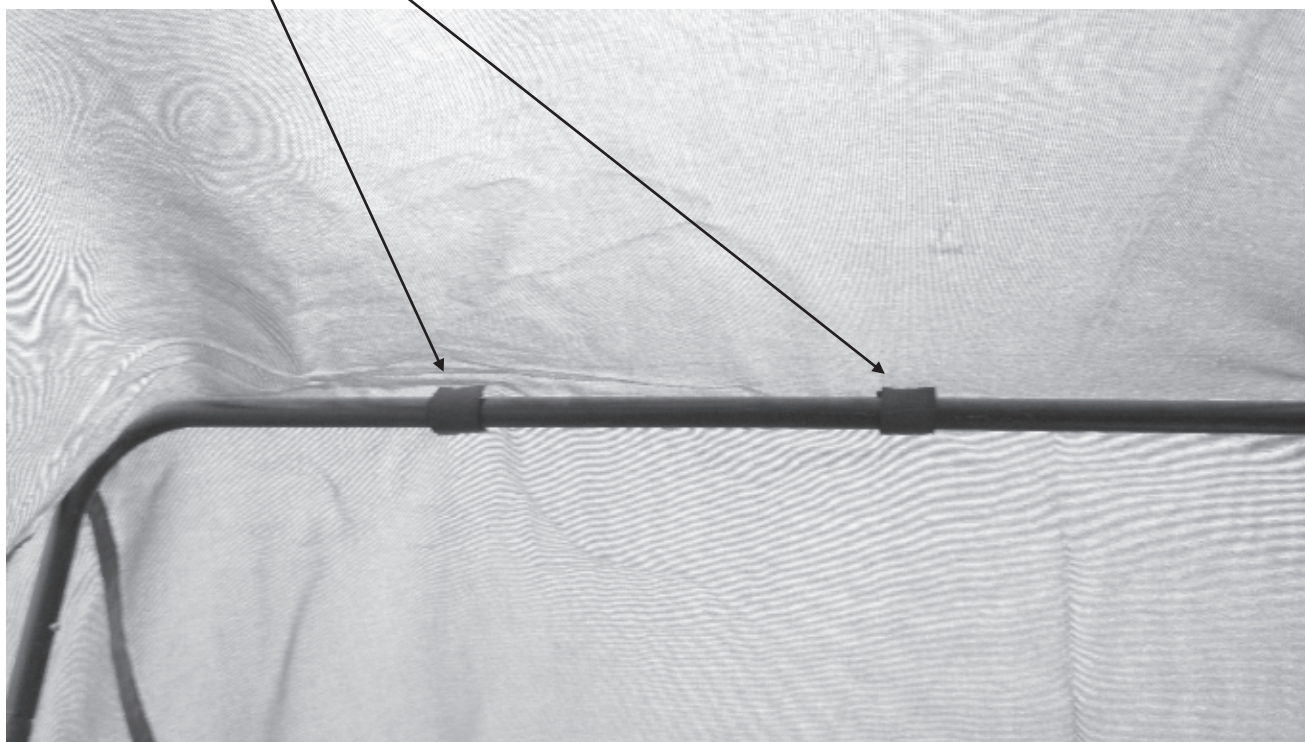
STEP 6 : Snap the balance C tubes over the corresponding L & R side straight tubes. Make sure that C tubes are inserted evenly on L & R side tubes to avoid a jam. Once inserted you will have to press the nipple at the end of each straight tube and push C tube till you hear a click and nipple should come through the side of C tube (As Shown in fig. 6C).



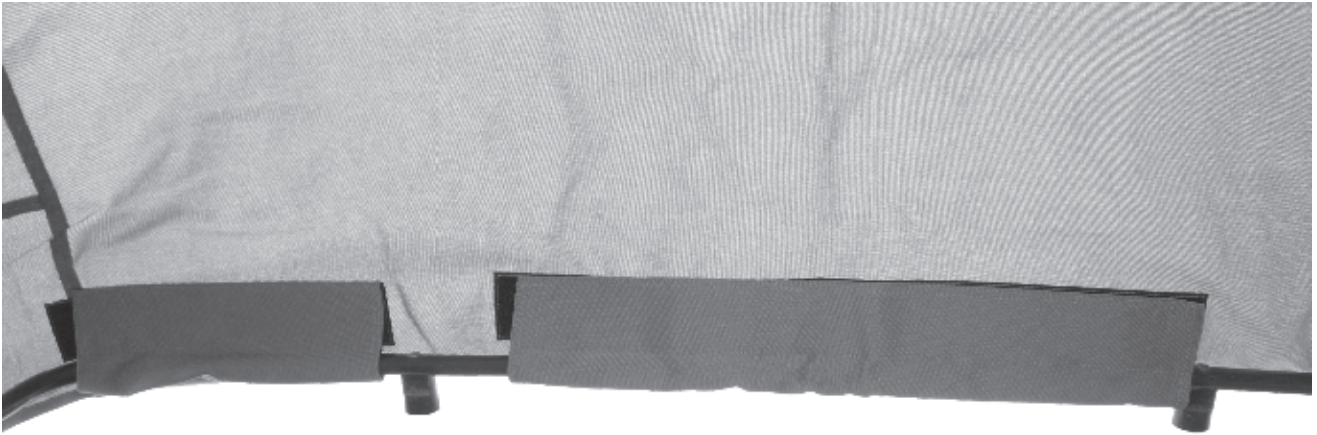
STEP 7 : Cover the pipes with the garage cover. Make sure front of the cover goes towards the front (opening side).



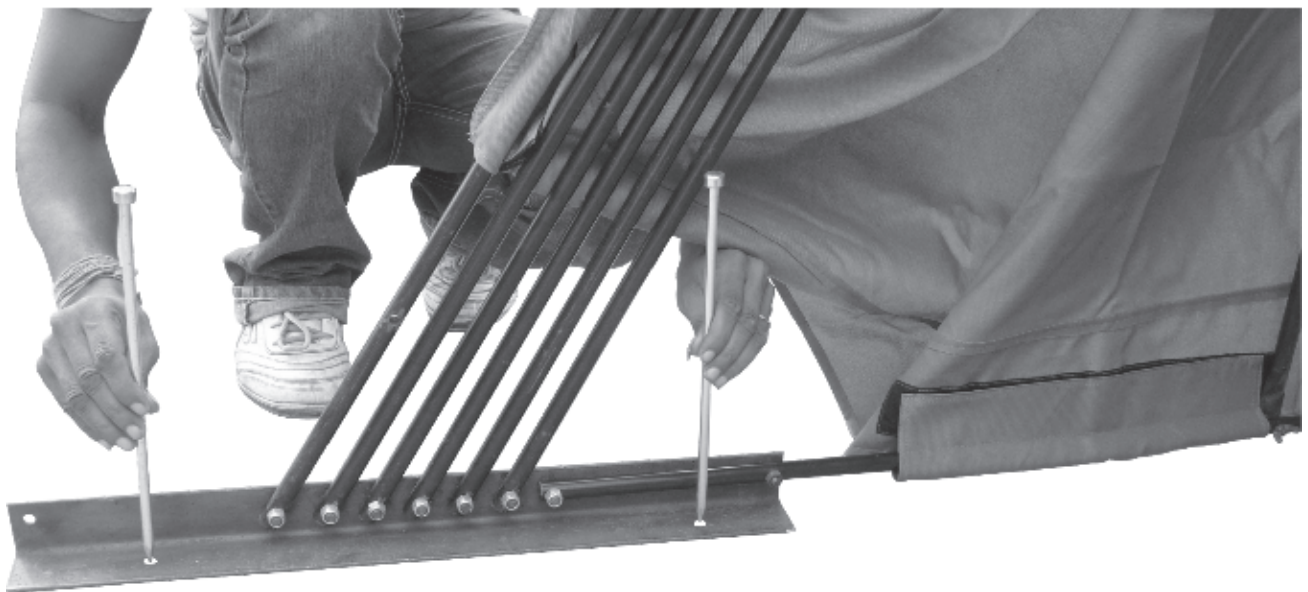
STEP 8 : Loop all roof velcro to corresponding C pipes



STEP 9 : Wrap around all bottom velcro flaps of the cover to the bottom pipe (front, back and sides)



STEP 10 : Anchor the tent with provide anchors if necessary or buy after market anchors depending on the mounting ground surface.



NOTE : Roof surface has webbing Loop to tie after market camping tent stabilizing ropes and ground pegs for proving more stability under windy conditions

