

Atena Cordless Nail Drill  
User Manual

MAKE BEAUTY A NEW SMART

US: service@melodysusie.com  
EU: service.uk@melodysusie.com  
http://www.melodysusie.com  
Whipple Road, Union City, CA 94578

AMZLAB GmbH  
Laubenhof 23, 45326 Essen, Germany  
THEMIS AR support ltd  
85 Great Portland St, London, United Kingdom, W1W 7LT

INDEX

Important Safeguards ..... 01  
Six Drill Bits ..... 04  
How to Use ..... 04  
How to Replace Drill Bit ..... 05  
Problem and Terms of Settlement ..... 06  
Warranty and Customer Service ..... 08

Thank you for choosing MelodySusie! Please read this user guide carefully and keep it in an accessible location so you may refer to it later.

IMPORTANT SAFEGUARDS

READ ALL INSTRUCTIONS BEFORE USING.

To reduce the risk of burns, electrocution, fire, or injury to persons. Please be sure to read the safety instruction as follow to avoid potential hazards that could result in personal injuries or damage to the device.

Note: If the USB cable connects to the adapter, it is recommended to use an adapter of 5V. Please do not exceed 5V, or the drill will burn out.

Check before Using

1. Check the power supply cord before the first use and during the life of the device. Do not use this device if it has a damaged cord or it is not working properly or damaged.
2. Do not plug this device into a voltage system that is different from the voltage system specified on the device. Use with improper voltage will damage the device and VOID warranty.
3. Please use the original cord only.

Note for Battery

1. The Battery needs to be charged fully before first use to ensure optimal performance.
2. Do not overcharge the device or use it when it is charging.
3. Charge the device in well-ventilated condition with 0 C ~40 C . Do not charge the device close to flammable or explosive materials. When charging the device, please do not cover it with clothes or other things.
4. If the device is not used for long periods of time, you should charge and discharge once every three months. In normal conditions, the battery performance will decline over several years.

Note for Using

1. Do not touch the cord with the wet hand to prevent electric leakage and shock or fire. Please turn the power off after use.
2. Do not use the crooked or damaged nail drill bit or replace the bit when the power is on.
3. Adjust the speed gradually, not abruptly. Please stop to use once the unusual movement and noise happens.
4. Misuse, dropping or excessive force may cause device damage.
5. Children under 18 years of age should not use this device without parental consent and supervision.

Maintenance Work

1. Do not disassemble the device. Doing so could be dangerous and constitutes voiding warranty conditions.

2. Do not keep the device in a place which is about or more than 50°C (in a metal box, car or other places in high temperature). Keep the device dry and keep it away from the oil and grease.

3. Store the device in a cool and dry place. Do not store it in a hot or humid environment.

4. Keep electrical cord away from heated surfaces.
5. Do not dispose of the device in heat or fire.

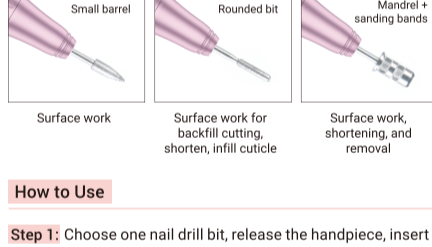
6. Do not clean the device with harmful chemicals or detergents.

Note for Injury

1. Having manicures done frequently can cause injuries to the nails as well.
2. If you need to remove the gel polish of natural nails, try to use the nail polish remover pads to avoid damage to the nail bed with the improper operation.
3. Do not use the device if you have an open wound on your nail or hand.
4. If you have any skin diseases, heat-sensitive, allergic reaction, onychomycosis or any other disorder, you should consult your doctor and medical professional before using the device.

The operator shall be responsible for any consequences including product damage or accidents if not strictly complies with the instructions.  
If you require any technical support, contact us at service@melodysusie.com  
SAVE THESE INSTRUCTIONS

Six Drill Bits



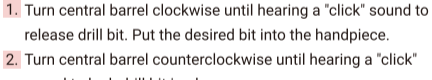
Cone: Under nails, cuticles, and sidewalls  
Safety bit: Cuticle work, polish nail side edge  
Needle head: Polish nail edge  
Small barrel: Surface work  
Rounded bit: Surface work for backfill cutting, shorten, infill cuticle  
Mandrel + sanding bands: Surface work, shortening, and removal

How to Use

- Step 1: Choose one nail drill bit, release the handpiece, insert the drill bit into the handpiece and lock it in place.
- Step 2: Press the ON/OFF button for 2 seconds to turn on or off the device.
- Step 3: Press the Speed Control to accelerate or decelerate the rotation speed.
- Step 4: Change the rotation direction of the grinding drill bit on the F/R button if needed.

How to Replace Drill Bit

Please make sure that the desired bit is suitable for the collet.



- \* Do not move central barrel during operation.
1. Turn central barrel clockwise until hearing a "click" sound to release drill bit. Put the desired bit into the handpiece.
  2. Turn central barrel counterclockwise until hearing a "click" sound to lock drill bit in place.
  3. Be sure to confirm the rotation of the bit and collet. Please take care of your fingers not to be hurt by bit edge.

Charging

1. Take out the cord and connect it with the DC socket.
2. The indicator light of the handpiece shows red and flashes, which means that the drill needs to be charged.
3. The indicator light of the handpiece shows green or blue when the drill is fully charged.



1 ON/OFF 2 Speed Control 3 F/R Button 4 Drill Bit 5 Indicator light

Problem and Terms of Settlement

Misoperation	Causing	Terms of settlement
Changing the nail drill bit when the power is on	1. Motor burns out 2. Bearing damages (Loud Noise)	Turn off the power when changing the nail drill bit
The power is on when not in use		Turn off the power when not in use
Overcharge	1. Battery lifespan shortens	Not exceed the specified charging time
Long time, Large load work	1. Motor burns out 2. Device lifespan shortens 3. Bearing damages (Loud Noise) 4. Handpiece damages	The continuous working time should not be too long when the working condition is in heavy load. When the device is overheating, it should be stopped immediately to make it return to normal temperature.
Insert into a mismatched power supply	1. Motor burns out	According to the device voltage requirements, insert the matching power supply
Put the power cord at random/ Pull the power cord/ Use the device when charging	1. Battery damages and device lifespan shortens 2. Power cord breaks 3. Poor connection 4. Easy to cause short circuit	Do not pull the power cord/Do not use the device when charging

Misoperation	Causing	Terms of settlement
Replace the original charger randomly	1. Device charging unsuccessfully 2. Battery damages 3. Easy to cause short circuit	Use the original specification charger
Dust into device	1. Bearing damages (Loud Noise) 2. Motor gets hot 3. Rotational speed slows down 4. The potentiometer speed regulation falls 5. Handpiece damages	Clean dust, add the dust-proof protection of the dustproof hood/Avoid device drops or by other impacts
Device drops to the ground or by other impacts	1. The ON/OFF button doesn't work 2. The potentiometer speed regulation falls 3. F/R button doesn't work 4. Handpiece damages	Avoid device drops or by other impacts (If the handpiece was damaged, it can be purchased separately.)
Insert the nail drill bit into the device incorrectly /Rotate the central barrel into the place incorrectly/Take the drill bit out when the Central barrel is locked	1. Drill bit falls out 2. High vibration 3. Drill bit sticks 4. The handpiece sticks and cannot be turned on 5. Handpiece damages	Insert the nail drill bit into the device correctly/If the drill bit sticks, please release the handpiece and try to take it out if hard/Rotate the Central barrel correctly
Replace drill bit when handpiece is not completely stopped	1. The handpiece sticks and cannot be turned on 2. Handpiece damages	Do not replace drill bit when handpiece is not completely stopped
The size of drill bit is not suitable	Can not insert the drill bit into the device	Use standard drill bit
Water into the device/Operate in wet or moist conditions/Use a wet cloth to clean the device	1. Motor burns out 2. Device lifespan shortens	Do not operate in wet or moist conditions/Only a dry cloth is allowed for cleaning

Specifications

Input voltage range: 5V  
Email: service@melodysusie.com  
Website: www.melodysusie.com

Warranty and Customer Service

MelodySusie offers a 6-month limited warranty on quality related issues. Please apply for your extra 6-month warranty extension and download the user manual in other languages by registering on www.melodysusie.com if needed.

