

# MELODY SUSIE

BRING YOUR NAIL SALON HOME

## **M SERIES**

**SPARKLE PLUS  
RECHARGEABLE NAIL DRILL**

# Instruction Manual



# INDEX

- 1** Check before Using
- 1** Note for Battery
- 2** Note for Using
- 2** Maintenance Work
- 3** Note for Injury
- 4** Six Drill Bits
- 5** How to Use
- 5** How to Replace Drill Bit
- 6** Charging
- 6** Problem and Terms of Settlement
- 8** Specifications
- 8** Warranty and Customer Service



Thank you for choosing MelodySusie! Please read this user guide carefully and keep it in an accessible location so you may refer to it later.

## **IMPORTANT SAFEGUARDS**

### **READ ALL INSTRUCTIONS BEFORE USING.**



To reduce the risk of burns, electrocution, fire or injury to persons.

Please be sure to read the safety instruction as follow to avoid potential hazards that could result in personal injuries or damage to the device.

## **01 Check before Using**

- 1** Check the power supply cord before the first time use and during the life of the device. Do not use the device if it has a damaged cord or plug, or if it is not working properly.
- 2** Do not plug the device into a voltage system that is not specified on the device or charger. Use with improper voltage will damage the device and VOID warranty.
- 3** Use the original charger only.
- 4** The handpiece of this nail drill is not compatible with other models of nail drill machine from MelodySusie and other brands. Please don't connect the handpiece with a different nail drill machine.

## **02 Note for Battery**

- 1** The Battery needs to be charged fully before first use to ensure optimal performance.
- 2** Do not overcharge the device or use it when it is charging. Charge the device in well-ventilated condition with 0 ℃ ~40 ℃.



- 3** Do not charge the device close to flammable or explosive materials. When charging the device, please do not cover it with clothes or other things.
- 4** If the device is not used for long periods of time, you should charge and discharge once every three months. In normal conditions, the battery performance will decline over several years.

## **03 Note for Using**

- 1** To prevent electric leakage and shock or fire, do not draw out the connecting wires during use or touch the plug with the wet hand. Turn the power off after use.
- 2** Do not use the crooked or damaged nail drill bit or replace the bit when power is on.
- 3** Do not adjust the speed abruptly, stop use once the unusual movement and noise happens.
- 4** Misuse, dropping or excessive force may cause device damage.
- 5** Minor should not use this device without parental consent and supervision.

## **04 Maintenance Work**

- 1** Do not disassemble the device. Doing so could be dangerous and constitutes voiding warranty conditions.
- 2** Do not keep the device in a metal box, car, or other places at high temperature (more than 50°C). Keep the handpiece dry and away from oil and grease.
- 3** Do not store the device in a hot or humid environment. Store it in a cool and dry place.
- 4** Keep the electrical cord away from heated surfaces.



- 5 Do not dispose of the device in heat or fire.
- 6 Do not clean the device with harmful chemicals or detergents.

## 05 Note for Injury

- 1 Having manicures done frequently can cause injuries to the nails as well.
- 2 If you need to remove the gel polish of natural nails, try to use the nail polish remover pads to avoid damage to the nail bed with improper operation.
- 3 Do not use the device if you have an open wound on your nail or hand.
- 4 If you have any skin diseases, heat-sensitive, allergic reactions, onychomycosis, or any other disorder, you should consult your doctor and medical professionals before using the device.

The operator shall be responsible for any consequences including product damage or accidents if not strictly complies with the instructions.

If you require any technical support, **please contact us.**

**SAVE THE INSTRUCTION MANUAL**



## 06 Six Drill Bits



**Needle Head**  
Polish nail edge



**Cone**  
Under nails, cuticles,  
and sidewalls



**Mandrel+Sanding  
Bands**  
Surface work,  
shortening, and  
removal



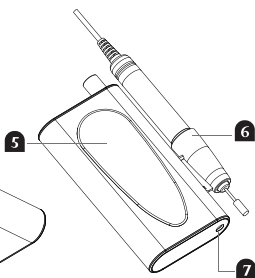
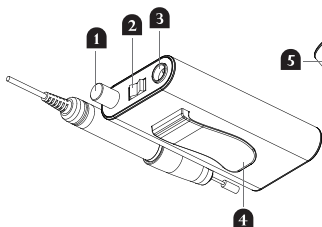
**Safety Bit**  
Cuticle work,  
polish nail  
side edge



**Large Barrel**  
Surface work for  
and shortening



**Small Barrel**  
Surface work



**1** ON/OFF  
Speed control knob

**2** F/R button

**3** Handpiece jack

**4** Portable hook

**5** LCD screen (It will show the  
RPM and the battery)

**6** Handpiece fixture

**7** DC socket

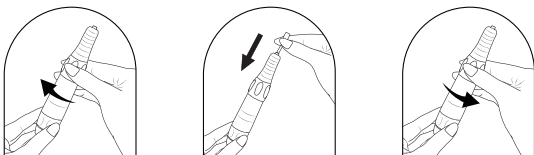


## 07 How to Use?

- Step 1:** Connect the handpiece to the handpiece jack.
- Step 2:** Choose one grinding drill bit, release the handpiece, insert the drill bit at the drill head and lock it in place.
- Step 3:** Rotate the ON/OFF button to turn on the device.
- Step 4:** Rotate the speed control knob to accelerate or decelerate the rotation speed.
- Step 5:** Change the rotation direction of the grinding drill bit on the F/R button if needed.
- Step 6:** After the polishing is finished, please rotate the central barrel and take out the drill bit. The handpiece fixture could be used to place the handpiece when not in use.

## 08 How to Replace Drill Bit?

Please make sure that the desired bit is suitable for the collet.



 Do not move central barrel during operation.

- 1** Turn central barrel clockwise until hearing a “click” sound to release drill bit. Taking out the blank bar. Put the desired bit into the handpiece.
- 2** Turn central barrel counterclockwise until hearing a “click” sound to lock drill bit in place.
- 3** Be sure to confirm the rotation of the bit and collet. Please take care of your fingers not to be hurt by bit edge.



## 09 Charging

- 1 Take out the adapter and connect it with the DC Socket.
- 2 Connect the power supply with adapter and insert the main plug into a wall socket.
- 3 LCD screen will show the battery.

## 10 Problem and Terms of Settlement

Malfunction	Reasons	Solutions
Changing the nail drill bit when the power is on	1. Motor burns out 2. Bearing damages (Loud Noise)	Turn off the power when changing the nail drill bit.
The power is on when not in use		Turn off the power when not in use.
Long time, Large load work	1. Motor burns out 2. Device lifespan shortens 3. Bearing damages (Loud Noise) 4. Handpiece damages	The continuous working time should not be too long when the working condition is in heavy load. When the device is overheating, it should be stopped immediately to make it return to normal temperature.
Insert into a mismatched power supply	1. Motor burns out	According to the device voltage requirements, insert the matching power supply.
Put the power cord at random/ Pull the power cord	1. Device lifespan shortens 2. Power cord breaks 3. Poor connection 4. Easy to cause short circuit	Do not pull the power cord.





<b>Malfunction</b>	<b>Reasons</b>	<b>Solutions</b>
Replace the original charger randomly	<ol style="list-style-type: none"><li>1. Device damages</li><li>2. Easy to cause short circuit</li></ol>	Use the original specification charger.
Dust into device	<ol style="list-style-type: none"><li>1. Bearing damages (Loud Noise)</li><li>2. Motor gets hot</li><li>3. Rotational speed slows down</li><li>4. The potentiometer speed regulation fails</li><li>5. Handpiece damages</li></ol>	Clean dust, add the dust-proof protection of the dustproof hood.
Device drops to the ground or by other impacts	<ol style="list-style-type: none"><li>1. The ON/OFF button doesn't work</li><li>2. The potentiometer speed regulation fails</li><li>3. F/R button doesn't work</li><li>4. Handpiece damages</li></ol>	Avoid device drops or by other impacts (If the handpiece was damaged, it can be purchased separately.)
Insert the nail drill bit into the device incorrectly /Rotate the central barrel into the place incorrectly /Take the drill bit out when the central barrel is locked	<ol style="list-style-type: none"><li>1. Drill bit falls out</li><li>2. High vibration</li><li>3. Drill bit sticks</li><li>4. The Handpiece sticks and cannot be turned on</li><li>5. Handpiece damages</li></ol>	Insert the nail drill bit into the device correctly/If the drill bit sticks, please release the handpiece and try to take out it hard/Rotate the central barrel correctly.
Replace drill bit when handpiece is not completely stopped	<ol style="list-style-type: none"><li>1. The handpiece sticks and cannot be turned on</li><li>2. Handpiece damages</li></ol>	Do not replace drill bit when handpiece is not completely stopped.
Overcharge	<ol style="list-style-type: none"><li>1. Battery lifespan shortens</li></ol>	Not exceed the specified charging time
The size of drill bit is not suitable	<ol style="list-style-type: none"><li>1. Can not insert the drill bit into the device</li></ol>	Use standard drill bit.



Malfunction	Reasons	Solutions
Water into the device/Operate in wet or moist conditions/Use a wet cloth to clean the device	1. Motor burns out 2. Device lifespan shortens	Do not operate in wet or moist conditions/Only a dry cloth is allowed for cleaning.

## 11 Specifications

Input voltage range: 100-240V 50/60Hz

Output voltage: 12.6V/0.8A

E-mail: [service@melodysusie.com](mailto:service@melodysusie.com)

E-mail: [service.uk@melodysusie.com](mailto:service.uk@melodysusie.com)

Website: [www.melodysusie.com](http://www.melodysusie.com)

## 12 Warranty and Customer Service

**MelodySusie offers a 6 months limited warranty on quality related issues. Please apply for your extra 6 months warranty extension and download the instruction manual in other languages by registering on [www.melodysusie.com](http://www.melodysusie.com) if needed.**

Thank you for purchasing from MelodySusie.  
You are welcome to share your experience after receiving the product.  
Please contact us for any technical support if needed.

 [www.melodysusie.com](http://www.melodysusie.com)

 US Service: [service@melodysusie.com](mailto:service@melodysusie.com)

 UK Service: [service.uk@melodysusie.com](mailto:service.uk@melodysusie.com)

 FR Service: [service.fr@melodysusie.com](mailto:service.fr@melodysusie.com)

 DE Service: [service.de@melodysusie.com](mailto:service.de@melodysusie.com)

 Whipple Rd, Union City, CA 94578

**EU REP** AMZLAB GmbH  
Laubenhof 23, 45326 Essen, Germany

**UK REP** THEMIS AR support ltd.  
85 Great Portland St. London, United Kingdom, W1W 7LT