



Tartan

Featuring Kelmscott by Morris & Co.

Reminiscent of a detailed and finely woven Scottish tartan, this bold quilt is simply created using squares placed on-point to play with the patterns.

Collection:	Kelmscott by Morris & Co.
Technique:	Piecing
Skill Level:	Beginner
Crafting Time:	Longer Term*
Finished Size:	52 ¹ / ₄ " x 63 ¹ / ₂ " (132.72cm x 161.29cm)

*Crafting time based on Beginner skill level



Project designed by Lucy A. Fazely

Tech edited by Linda Turner Griepentrog

Fabric Requirements

DESIGN	COLOR	ARTICLE CODE	YARDAGE
(A) Strawberry Thief	Navy	PWWM001.NAVYX	¼ yard (22.86cm)
(B) Strawberry Thief	Red	PWWM001.REDXX	½ yard (30.48cm)
(C) Mini Strawberry Thief	Navy	PWWM002.NAVYX	¼ yard (22.86cm)
(D) Mini Strawberry Thief	Red	PWWM002.REDXX	½ yard (30.48cm)
(E) Bachelors Button	Aqua	PWWM003.AQUAX	¼ yard (22.86cm)
(F) Bachelors Button	Red	PWWM003.REDXX	¼ yard (22.86cm)
(G) Lily Leaf	Red	PWWM004.REDXX	¼ yard (22.86cm)
(H) Honeycombe	Aqua	PWWM005.AQUAX	¼ yard (22.86cm)
(I) Honeycombe	Red	PWWM005.REDXX	¼ yard (22.86cm)
(J) Marigold	Aqua	PWWM006.AQUAX	¼ yard (22.86cm)
(K) Marigold	Navy	PWWM006.NAVYX	¼ yard (22.86cm)
(L) Marigold	Red	PWWM006.REDXX	¼ yard (22.86cm)
(M) Marigold	Tan	PWWM006.TANXX	¼ yard (22.86cm)
(N) Gilt Stripe	Aqua	PWWM007.AQUAX	½ yard (30.48cm)
(O) Gilt Stripe	Blue	PWWM007.BLUEX	½ yard (30.48cm)
(P) Gilt Stripe	Navy	PWWM007.NAVYX	1 yard (.91m)
(Q) Seaweed Dot	Aqua	PWWM008.AQUAX	½ yard (30.48cm)
(R) Seaweed Dot	Navy	PWWM008.NAVYX	1 yard (.91m)*
(S) Seaweed Dot	Red	PWWM008.REDXX	¼ yard (22.86cm)

* includes binding

Backing (Purchased Separately)

44" (111.76cm)			
Marigold	Tan	PWWM006.TANXX	3½ yards (3.20m)
OR			
108" (274.32cm)			1¾ yards (1.60m)



(A)



(B)



(C)



(D)



(E)



(F)



(G)



(H)



(I)



(J)



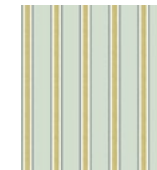
(K)



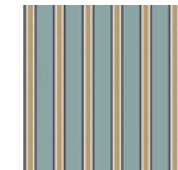
(L)



(M)



(N)



(O)



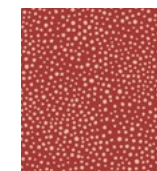
(P)



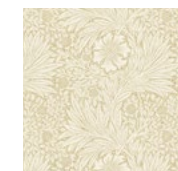
(Q)



(R)



(S)



Backing
44"
(111.76cm)

Additional Requirements

- Coats Dual Duty XP® All-purpose Thread
- 61" x 72" (154.90cm x 182.88cm) batting
- Sewing machine
- Rotary cutter/mat/ruler
- Basic sewing and pressing supplies

Cutting

WOF = Width of Fabric

Fabric A, cut:

(1) 4½" x WOF (11.43cm x WOF); sub-cut (8) 4½" (11.43cm) squares

Fabric B, cut:

(2) 4½" x WOF (11.43cm x WOF); sub-cut (12) 4½" (11.43cm) squares

Fabric C, cut:

(1) 4½" x WOF (11.43cm x WOF); sub-cut (8) 4½" (11.43cm) squares

Fabric D, cut:

(2) 4½" x WOF (11.43cm x WOF); sub-cut (12) 4½" (11.43cm) squares

Fabric E, cut:

(1) 4½" x WOF (11.43cm x WOF); sub-cut (4) 4½" (11.43cm) squares

Fabric F, cut:

(1) 4½" x WOF (11.43cm x WOF); sub-cut (8) 4½" (11.43cm) squares

Fabric G, cut:

(1) 4½" x WOF (11.43cm x WOF); sub-cut (8) 4½" (11.43cm) squares

Fabric H, cut:

(1) 4½" x WOF (11.43cm x WOF); sub-cut (4) 4½" (11.43cm) squares

Fabric I, cut:

(1) 4½" x WOF (11.43cm x WOF); sub-cut (8) 4½" (11.43cm) squares

Fabric J, cut:

(1) 4½" x WOF (11.43cm x WOF); sub-cut (4) 4½" (11.43cm) squares

Fabric K, cut:

(1) 4½" x WOF (11.43cm x WOF); sub-cut (8) 4½" (11.43cm) squares

Fabric L, cut:

(1) 4½" x WOF (11.43cm x WOF); sub-cut (8) 4½" (11.43cm) squares

Fabric M, cut:

(1) 4½" x WOF (11.43cm x WOF); sub-cut (4) 4½" (11.43cm) squares

Fabric N, cut:

(2) 4½" x WOF (11.43cm x WOF); sub-cut (16) 4½" (11.43cm) squares

Fabric O, cut:

(2) 4½" x WOF (11.43cm x WOF); sub-cut (16) 4½" (11.43cm) squares

Fabric P, cut:

(3) 4½" x WOF (11.43cm x WOF); sub-cut (24) 4½" (11.43cm) squares
(6) 3" x WOF (10.16cm x WOF), for outer border

Fabric Q, cut:

(2) 4½" x WOF (11.43cm x WOF); sub-cut (14) 4½" (11.43cm) squares

Fabric R, cut:

(1) 4½" x WOF (11.43cm x WOF); sub-cut (5) 4½" (11.43cm) squares
(6) 1½" x WOF (3.81cm x WOF), for inner border
(7) 2½" x WOF (6.35cm x WOF), for binding

Fabric S, cut:

(1) 4½" x WOF (11.43cm x WOF); sub-cut (8) 4½" (11.43cm) squares

Sewing

All seam allowances are ¼" (.64cm) and pieces are sewn right sides together.

Quilt Top Assembly

1. Arrange the 4½" (11.43cm) squares in (19) diagonal rows as shown, noting the orientation of striped squares. Stitch the squares together in each diagonal row, pressing seams in alternate directions for adjacent rows. Sew the rows together in order (**Fig. 1** on page 4) and press seams in one direction.
2. Trim the quilt center to 45¾" x 57" (116.21cm x 144.78cm), allowing ¼" (.64cm) beyond the triangle points for seaming (**Fig. 2** on page 5). Baste the edges of quilt center to keep the bias-cut edges from stretching.
3. Following the **Quilt Layout** diagram on page 6, add the borders. Sew (6) 1½" x WOF (3.81cm x WOF) **Fabric R** strips together end to end. Cut (2) 1½" x 57" (3.81cm x 144.78cm) borders. Sew a border strip



COATS

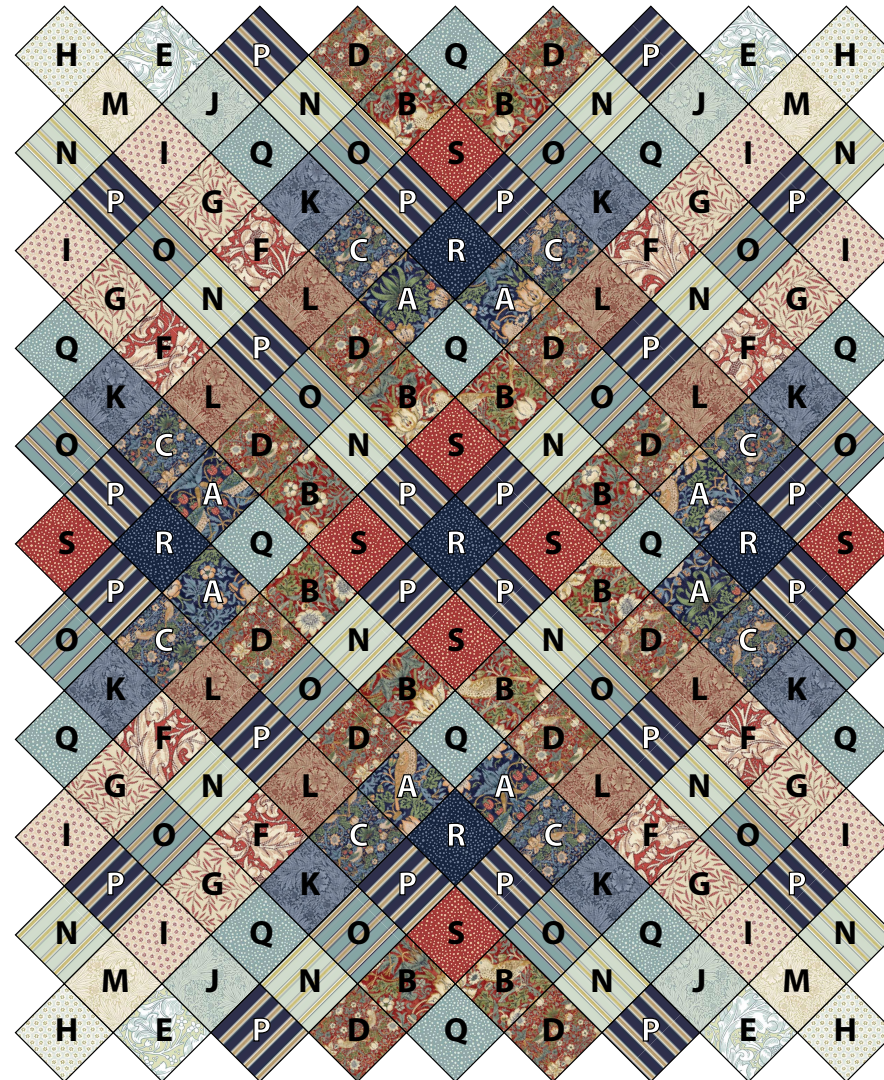
to each side of the quilt top. From the remaining strip, cut (2) 1½" x 47¾" (3.81cm x 121.29cm). Sew (1) border to the top and another to the bottom of the quilt top.

4. Sew the (6) 3" x WOF (7.62cm x WOF) **Fabric P** strips together end to end. Cut (2) 3" x 59" (7.62cm x 149.86cm) borders. Sew a border strip to each side of the quilt top. From the remaining strip, cut (2) 3" x 52¾" (7.62cm x 133.99cm) borders. Sew (1) border to the top and another to the bottom of quilt top.

Finishing

5. Sew together the (7) 2½" x WOF (6.35cm x WOF) **Fabric R** binding strips end to end using diagonal seams. Press the seams open. Press the binding strip in half wrong sides together.
6. Layer the backing (wrong side up), batting, and quilt top (right side up). Baste the layers together and quilt as desired. Trim excess batting and backing even with the top after quilting is completed.
7. Leaving an 8" (20.32cm) tail of binding, sew binding to top of quilt through all layers matching all raw edges. Miter corners. Stop approximately 12" (30.48cm) from where you started. Lay both loose ends of binding flat along quilt edge. Where these two loose ends meet, fold them back on themselves and press to form a crease. Using this crease as your stitching line, sew the two open ends of the binding together right sides together. Trim seam to ¼" (.64cm) and press open. Finish sewing binding to quilt.
8. Turn the binding to the back of quilt and hand-stitch in place.

Fig. 1





Quilt Layout

