



True Morris

Featuring The Original Morris & Co., Kelmscott and Merton

Classic fabrics combine to create a beautiful quilt composed of multiple block styles, fussy-cut borders, and intricate appliqué.

Collection:	The Original Morris & Co., Kelmscott and Merton
Technique:	Piecing, Appliqué
Skill Level:	Intermediate
Crafting Time:	Longer Term*
Finished Size:	66" x 66" (167.64cm x 167.46cm)

*Crafting time based on Intermediate skill level

Project designed by Carl Hentsch
 Tech edited by Linda Turner Griepentrog

Fabric Requirements

DESIGN	COLOR	ARTICLE CODE	YARDAGE
(A) Strawberry Thief	Navy	PWWM001.NAVYX	3 yards (2.74m)
(B) Mini Strawberry Thief	Navy	PWWM002.NAVYX	1 yard (.91m)
(C) Mini Strawberry Thief	Red	PWWM002.REDXX	Fat Quarter
(D) Bachelors Button	Aqua	PWWM003.AQUAX	½ yard (45.72cm)
(E) Bachelors Button	Green	PWWM003.GREEN	¼ yard (22.86cm)
(F) Lily Leaf	Aqua	PWWM004.AQUAX	1 yard (.91m)
(G) Lily Leaf	Green	PWWM004.GREEN	Fat Quarter
(H) Lily Leaf	Tan	PWWM004.TANXX	Fat Quarter
(I) Marigold	Aqua	PWWM006.AQUAX	⅝ yard (57.15cm)
(J) Marigold	Green	PWWM006.GREEN	¼ yard (22.86cm)
(K) Marigold	Navy	PWWM006.NAVYX	½ yard (45.72cm)
(L) Marigold	Red	PWWM006.REDXX	Fat Quarter
(M) Gilt Stripe	Navy	PWWM007.NAVYX	¾ yard (68.58cm)
(N) Seaweed Dots	Red	PWWM008.REDXX	Fat Quarter
(O) Seaweed Dots	Navy	PWWM008.NAVYX	¾ yard (68.58cm)
(P) Snakehead	Sage	PWWM010.SAGEX	Fat Quarter
(Q) Willow Boughs	Red	PWWM011.REDXX	Fat Quarter
(R) Chrysanthemum Toile	Red	PWWM013.REDXX	Fat Quarter
(S) Florets	Brown	PWWM014.BROWN	Fat Quarter
(T) Florets	Red	PWWM014.REDXX	Fat Quarter

* includes binding

Backing (Purchased Separately)

44" (111.76cm)			
Chrysanthemum	Red	PWWM009.REDXX	3½ yards (3.05m)
OR			
108" (274.32cm)			2½ yards (1.94m)



(A)



(B)



(C)



(D)



(E)



(F)



(G)



(H)



(I)



(J)



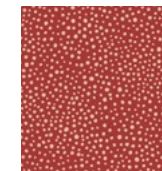
(K)



(L)



(M)



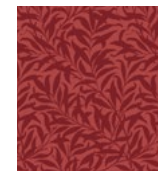
(N)



(O)



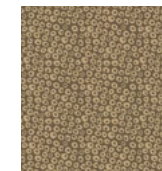
(P)



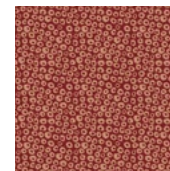
(Q)



(R)



(S)



(T)



Backing
 44"
 (111.76cm)

Additional Requirements

- Coats Dual Duty XP® All-purpose thread
- 74" x 74" (187.96cm x 187.96cm) batting
- Sewing machine
- Rotary cutter/mat/ruler
- Template plastic
- Paper-backed fusible web
- Basic sewing and pressing supplies
- Appliqué or open-toe presser foot

Cutting

WOF = Width of Fabric; LOF = Length of Fabric

Fabric A, fussy-cut:

(8) identical 5½" x WOF (13.97cm x WOF), for outer border (see quilt photo for motif placement)

Fabric B, fussy-cut:

(4) identical 4½" x WOF (11.43cm x WOF), for inner border (see quilt photo for motif placement)

Fabrics C, L, N, P, and T, cut from each:

(12) Piece 8 Diamonds

Fabric D, cut:

(3) 4⅞" x WOF (12.38cm x WOF); sub-cut (24) 4⅞" (12.38cm) Piece 2 squares, draw a diagonal line on the wrong side of each square

Fabric E, cut:

(1) 4⅞" x WOF (12.38cm x WOF); sub-cut (8) 4⅞" (12.38cm) Piece 2 squares, draw a diagonal line on the wrong side of each square

Fabric F, cut:

(3) 4⅞" x WOF (12.38cm x WOF); sub-cut (24) 4⅞" (12.68cm) Piece 2 squares
(7) 2½" x WOF (6.35cm x WOF)

Fabric G, cut:

(24) Piece 8 Diamonds

Fabric H, cut:

(2) 5½" (13.02cm) squares; cut each square once diagonally to make (4) Piece 10 half-square triangles (HST)

Fabric I, cut:

(1) 5½" x WOF (13.02cm x WOF); sub-cut (2) 5½" (13.02cm) squares; cut each square once diagonally to make (4) Piece 10 HST
(3) 2⅝" x WOF (6.67cm x WOF); sub-cut (40) 2⅝" (6.67cm) squares; cut each square once diagonally to make (80) Piece 3 HST
(3) 2⅞" x WOF (5.40cm x WOF); sub-cut (56) 2⅞" (5.40cm) squares; cut each square once diagonally to make (112) Piece 4 HST

Fabric J, cut:

Trace (4) of each appliqué stem to the paper side of the fusible web. Following the manufacturer's instructions, fuse to the wrong side of the fabric. Cut out each stem on the drawn line.

Fabric K, cut:

(1) 4⅞" x WOF (12.38cm x WOF); sub-cut (8) 4⅞" (12.38cm) Piece 2 squares
(2) 2½" x WOF (6.35cm x WOF)

Fabric M, cut:

Enough 2½" (6.35cm) bias strips to make 274" (695.96cm) of finished binding

Fabric O, cut:

(9) 2½" x WOF (6.35cm x WOF)

Fabric Q, cut:

(12) Piece 8 Diamonds
(4) Piece 6 Trapezoids

Fabric R, cut:

(4) Piece 5 Diamonds and (4) Piece 5 Diamonds reversed

Fabric S, cut:

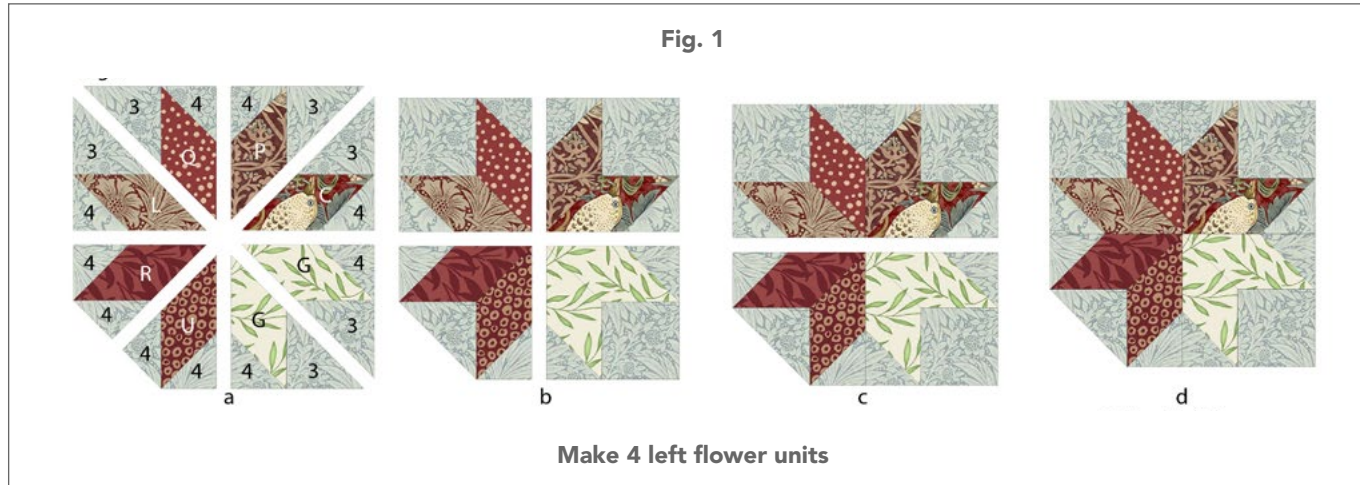
(2) 2⅞" (7.30cm) squares; cut each square once diagonally to make (4) Piece 7 HST

Sewing

All seam allowances are ¼" (.64cm) and pieces are sewn right sides together. Match all adjacent seams when sewing pieces together.

Flower Block

1. To make the left flower, refer to **Figure 1** on page 4 to arrange (2) **Fabric G** and (1) each of **Fabric C, L, N, P, Q,** and T Piece 8 Diamonds, (6) **Fabric I** Piece 3 triangles, and (10) **Fabric I** Piece 4 triangles. Sew a triangle to each side of a Piece 8 Diamond. Sew two Diamond units together as shown. Sew the units into rows and then sew the rows together. Make a total of (4) left flower units.
2. To make the center flower, refer to **Figure 2** on page 4 to arrange (2) **Fabric G** and (1) each of **Fabric C, L, N, P, Q,** and T Piece 8 Diamonds, (8) **Fabric I** Piece 3 triangles, and (8) **Fabric I** Piece 4 triangles. Sew a triangle to each side of a Piece 8 Diamond. Sew two Diamond units together as shown. Sew the units into rows, and then sew the rows together. Make a total of (4) center flower units.



3. To make the right flower, refer to **Figure 3** on page 6 to arrange (2) **Fabric G** and (1) each of **Fabric C, L, N, P, Q**, and T Piece 8 Diamonds, (6) **Fabric I** Piece 3 triangles, and (10) **Fabric I** Piece 4 triangles. Sew a triangle to each side of a Piece 8 Diamond. Sew two Diamond units together as shown. Sew the units into rows and then sew the rows together. Make a total of (4) right flower units.
4. Arrange a Center, Left, and Right Flower unit, and a **Fabric I** Piece 10 triangle as shown in **Figure 4** on page 6. Sew the left flower to the triangle and the center and right flower units together into diagonal rows. Sew the rows together to complete the section.
5. Sew a Piece 5 Diamond and Piece 5 Diamond Reversed to each side of a **Fabric H** Piece 10 triangle. Sew a **Fabric Q** Piece 6 Trapezoid and **Fabric S** Piece 7 as shown. Make a total of (4) units (**Fig. 5** on page 7).
6. Arrange a Step 4 flower section and the section from Step 5 triangle as shown in **Figure 6** on page 7. Sew the units together. Remove the paper backing from the appliqué stems and fuse in place. Stitch these in place with a blanket stitch or small zigzag stitch. Make a total of (4) Flower Blocks.

Border Blocks

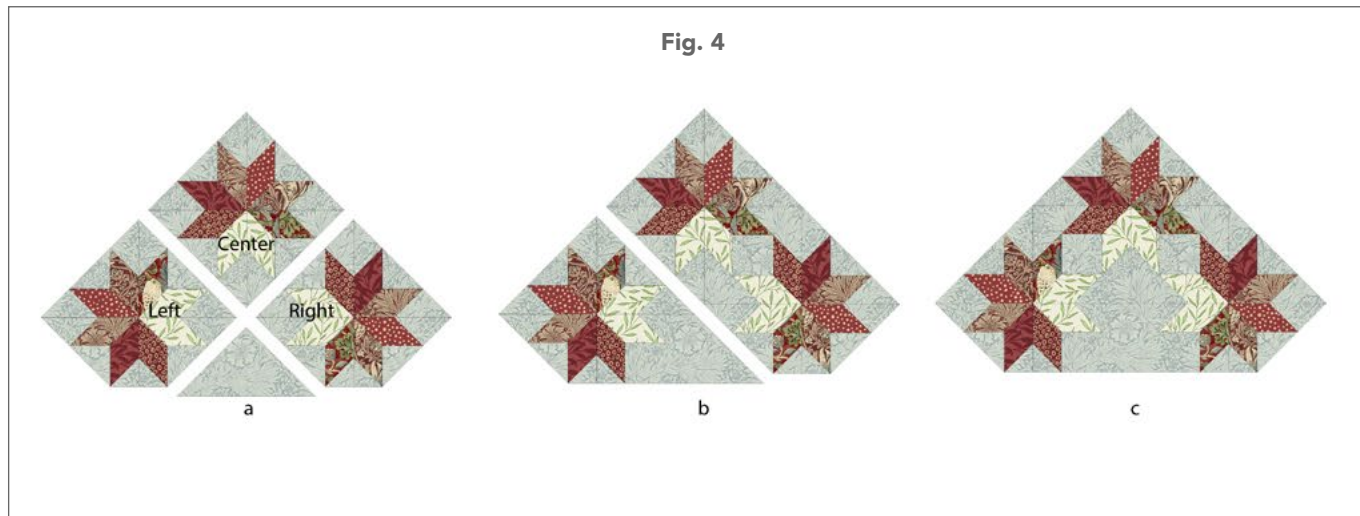
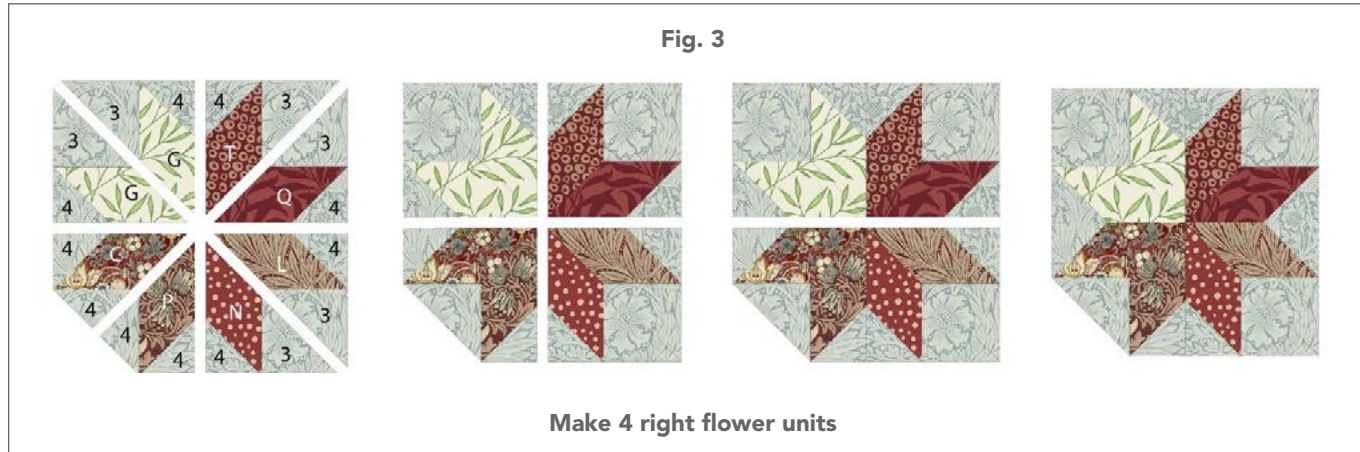
7. Sew a 2½" x WOF (6.35cm x WOF) **Fabric O** strip to a 2½" x WOF (6.35cm x WOF) **Fabric K** strip, press the seams toward **Fabric O**. Repeat to make another strip set. Cross-cut (32) 2½" x 4½" (6.35cm x 11.43cm) units. Repeat with the 2½" x WOF (6.35cm x WOF) **Fabric F** strips and the remaining 2½" x WOF (6.35cm x WOF) **Fabric O** strips to make (7) strip sets. Cross-cut (104) 2½" x 4½" (6.35cm x 11.43cm) units (**Fig. 7** on page 8).

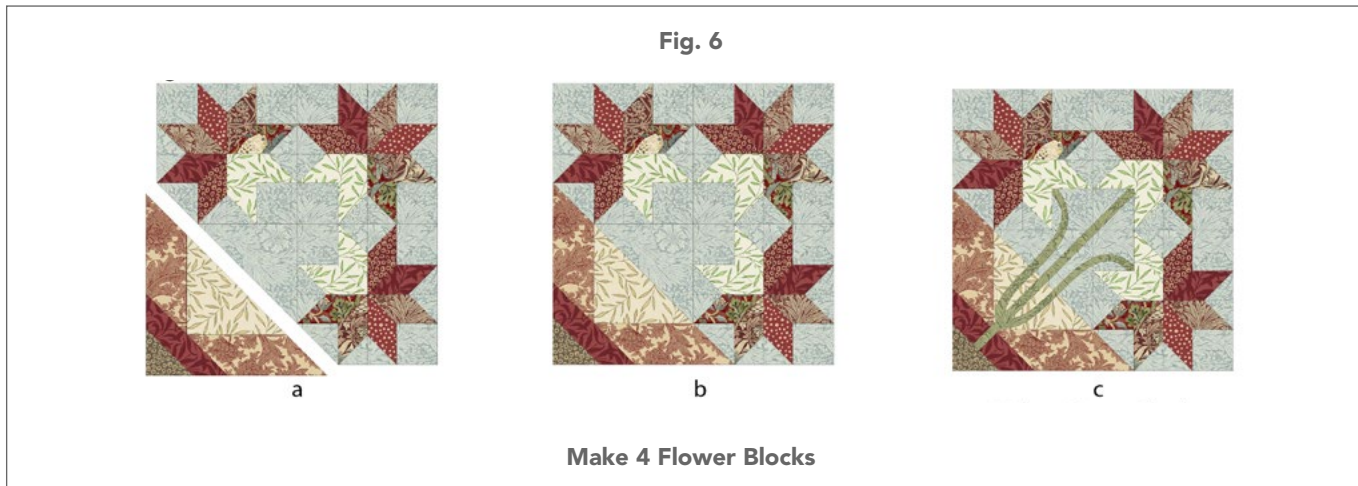
8. Sew a **Fabric F/O** unit to a **Fabric K/O** unit to make a four-patch unit. Make a total of (32) four-patch units. Sew the remaining **Fabric F/O** units together to make a total of (36) four-patch units (**Fig. 8** on page 8).
9. Place a **Fabric E** and **Fabric K** Piece 2 square right sides together. Sew a scant ¼" (.64cm) on each side of the drawn line. Cut apart on the line. Press seams toward **Fabric K**. Make a total of (16) **Fabric E/K** HST units (**Fig. 9** on page 9).
10. Place a **Fabric D** and **Fabric F** Piece 2 square right sides together. Sew a scant ¼" (.64cm) from the drawn line. Cut apart on the line. Press seams toward **Fabric D**. Make a total of (48) **Fabric D/F** HST units (**Fig. 10** on page 9).
11. Referring to **Figure 11** on page 10, arrange a **Fabric D/F** HST unit, (2) **Fabric F/O** four-patch units, and a **Fabric E/K** HST unit as shown. Sew the units together into rows, then sew the rows together to complete the block. Make a total of (16) blocks.
12. Referring to **Figure 12** on page 10, arrange (2) **Fabric D/F** HST units and (2) **Fabric F/O** four-patch units as shown. Sew the units together into rows, then sew the rows together to complete the block. Make a total of (4) blocks.

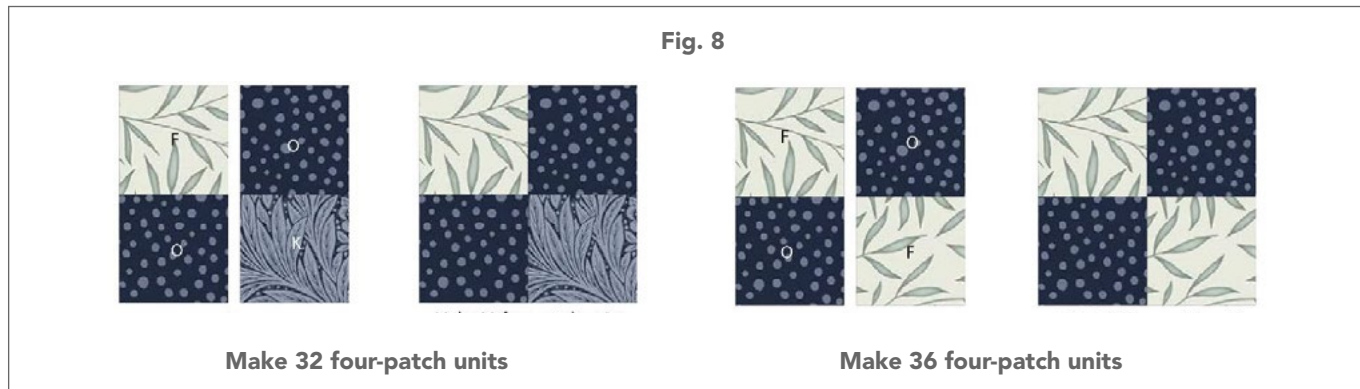
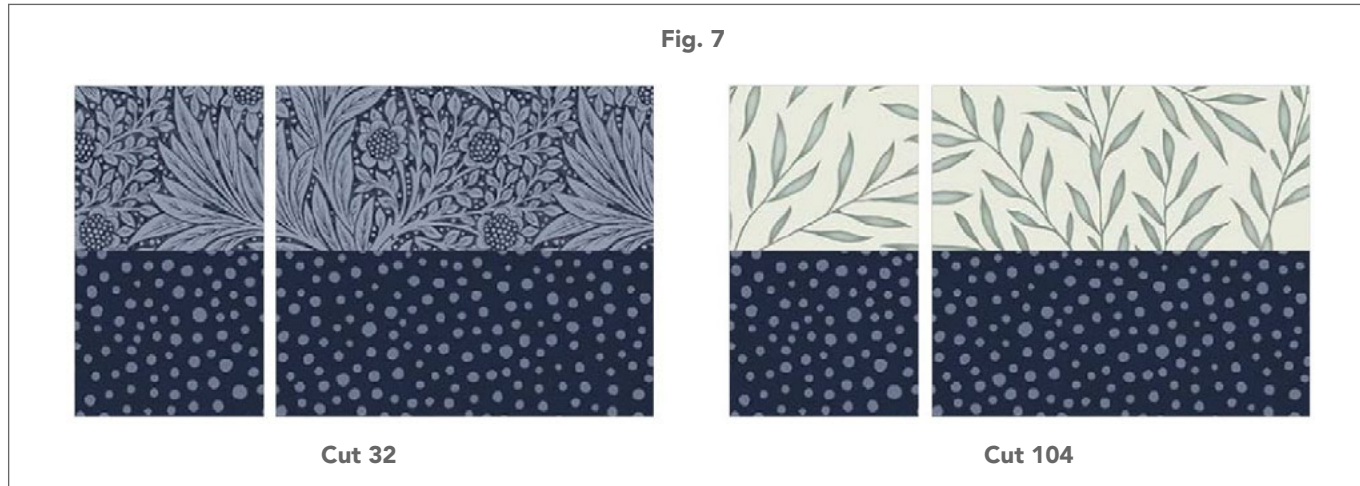
Quilt Top Assembly

13. Arrange the (4) Flower Blocks as shown in **Figure 13** on page 11. Sew together into rows and sew the rows together to complete the quilt top center.
14. Mark the centers of each quilt top side and each inner border strip. Center the first border fabric to the quilt. Matching the centers, sew one inner border strip to each side of the quilt top, starting and stopping the stitching exactly ¼" (.64cm) from the quilt top corner. DO NOT cut off the extra fabric length. Press the seams toward the borders.

15. Place the quilt top right side up on the ironing board. Fold the end of the border back so that it rests on top of itself with the right sides together. Adjust the borders until you achieve a 45° angle at the quilt top corner. Press with the iron to make a crease.
16. Fold the entire quilt at an angle with right sides together. Align the border fabric raw edges and the border seams at crease marks. Stitch along the crease mark. Trim the excess fabric length, leaving ¼" (.64cm) seam allowance. Press the mitered seam open (**Fig. 14** on page 11).
17. Noting the orientation, arrange the Border and Corner Blocks around the quilt as shown in **Figure 15** on page 12. Sew the blocks together in rows as shown, then sew the rows to the quilt top center.
18. Arrange the remaining four-patch units and HST units around the quilt as shown in **Figure 16** on page 12. Sew the units together into rows and sew the rows to the quilt top.
19. Sew (2) 5½" x WOF (13.97cm x WOF) Piece 2 strips together, end-to-end, matching the print, to make one long border. Trim to 5½" x 77" (13.97cm x 195.58cm). Repeat with the remaining border strips. Follow Steps 14-16 above to add the outer border to the quilt top (**Fig. 17** on page 13).







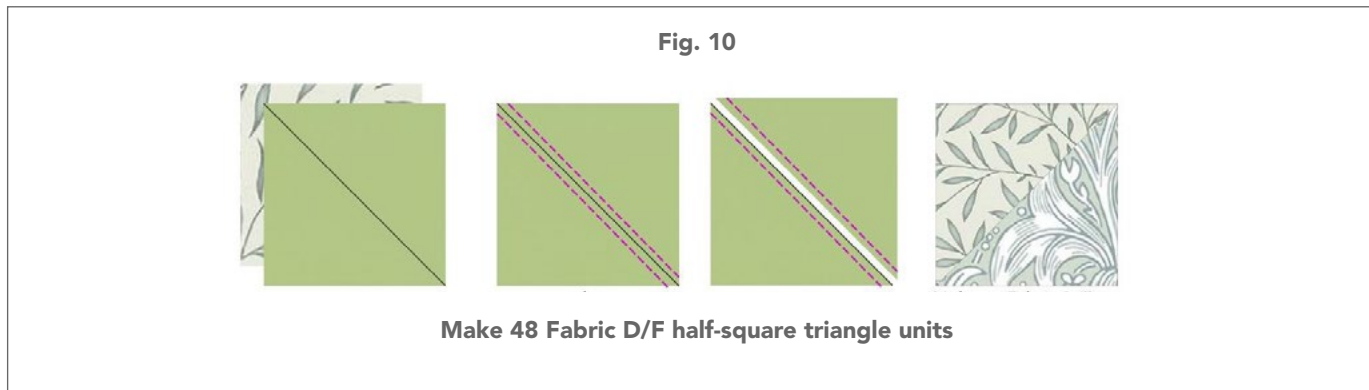
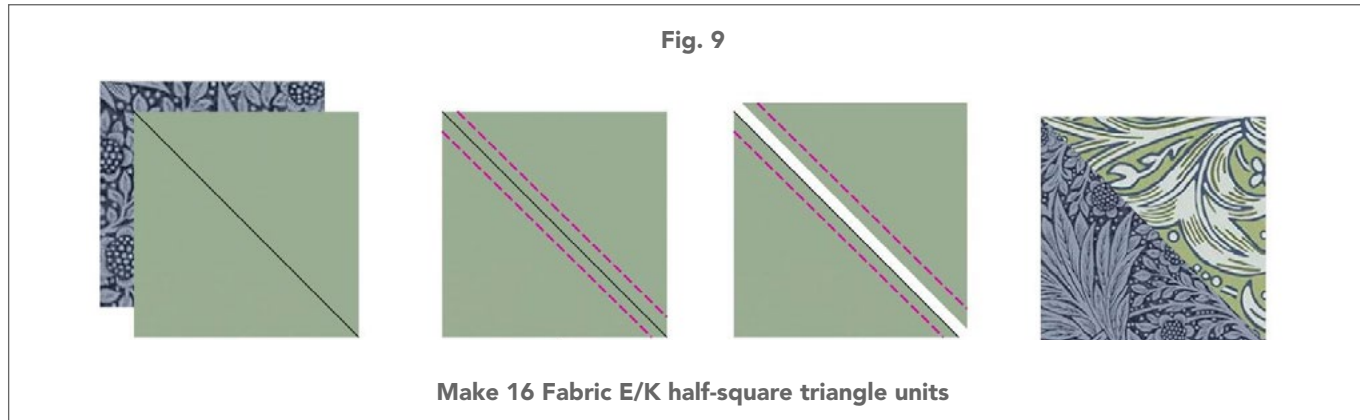


Fig. 11



Make 16 corner blocks

Fig. 12



Make 16 border blocks

Fig. 13



Fig. 14



Complete the first mitered border

Fig. 15

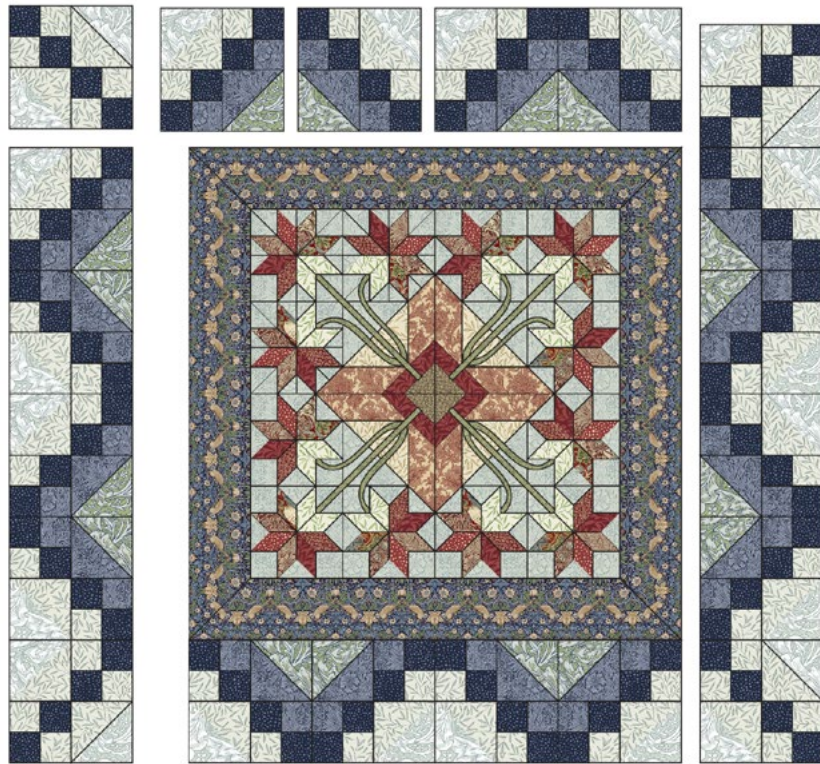


Fig. 16

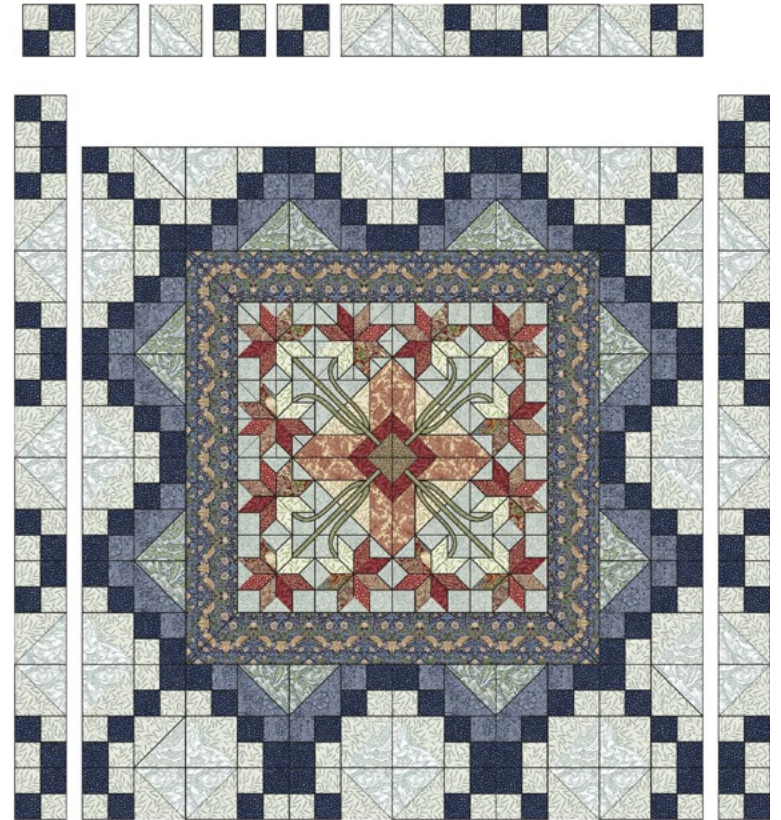


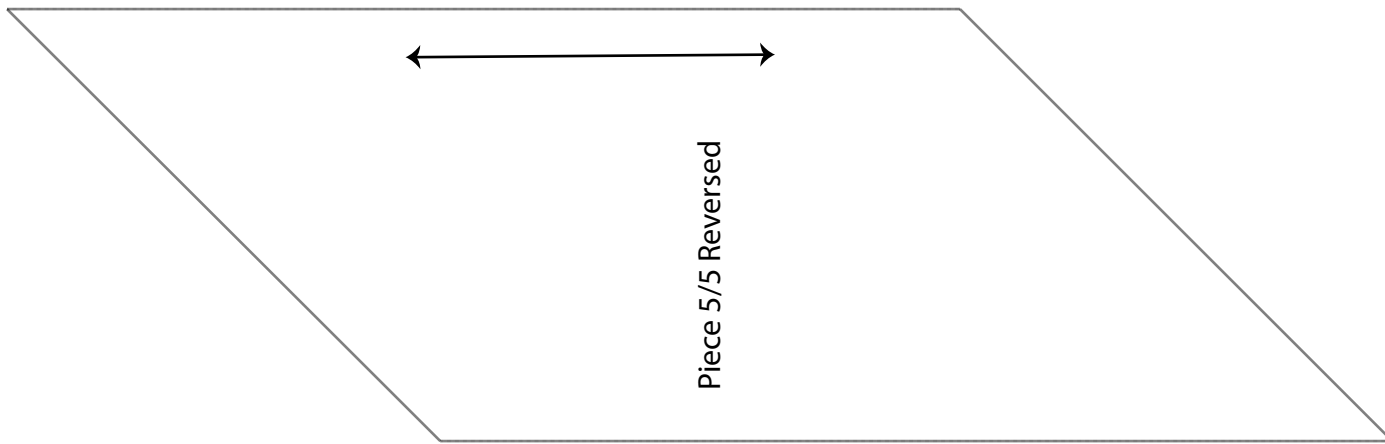
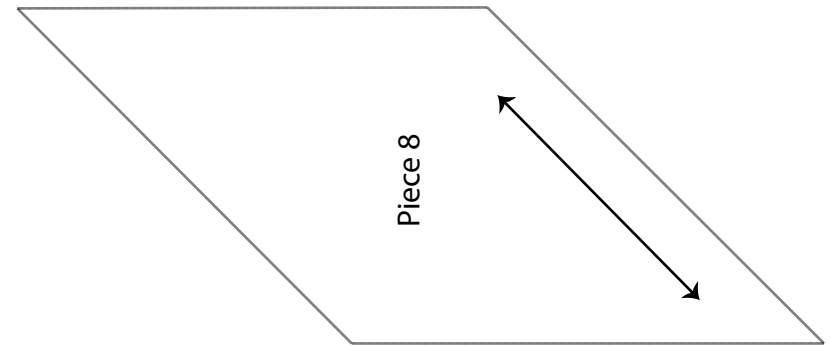
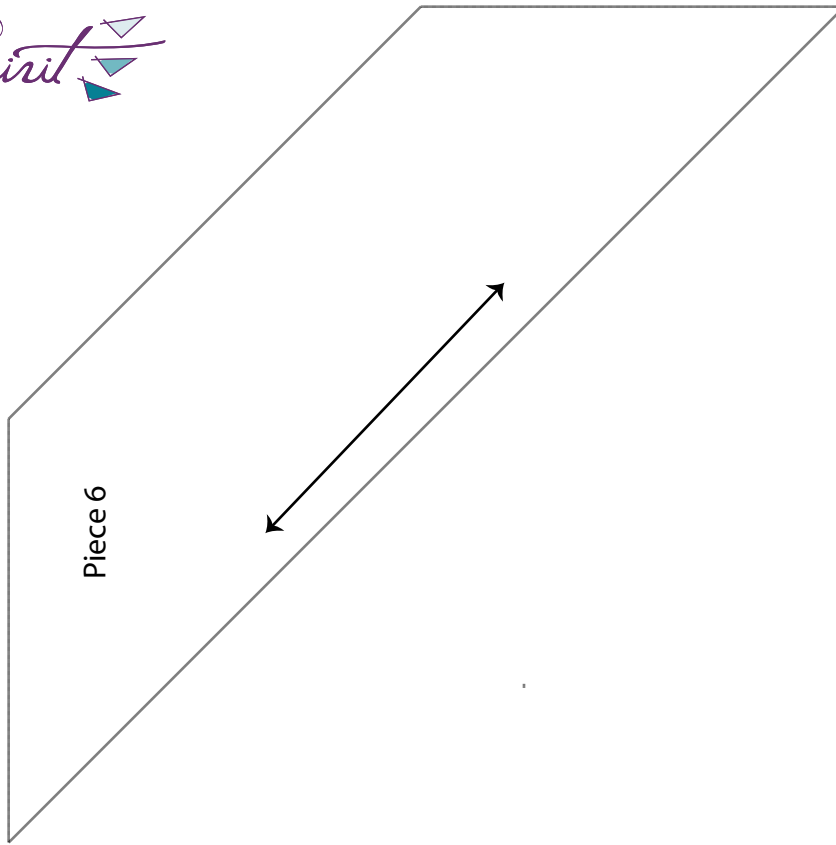
Fig. 17



Finishing

20. Sew together the 2½" (6.35cm) **Fabric M** bias binding strips end to end using diagonal seams. Press the seams open. Press the binding strip in half wrong sides together.
21. Layer the backing (wrong side up), batting, and quilt top (right side up). Baste the layers together and quilt as desired. Trim excess batting and backing even with the top after quilting is completed.
22. Leaving an 8" (20.32cm) tail of binding, sew binding to top of quilt through all layers matching all raw edges. Miter corners. Stop approximately 12" (30.48cm) from where you started. Lay both loose ends of binding flat along quilt edge. Where these two loose ends meet, fold them back on themselves and press to form a crease. Using this crease as your stitching line, sew the two open ends of the binding together right sides together. Trim seam to ¼" (.64cm) and press open. Finish sewing binding to quilt.
23. Turn the binding to the back of quilt and hand-stitch in place.

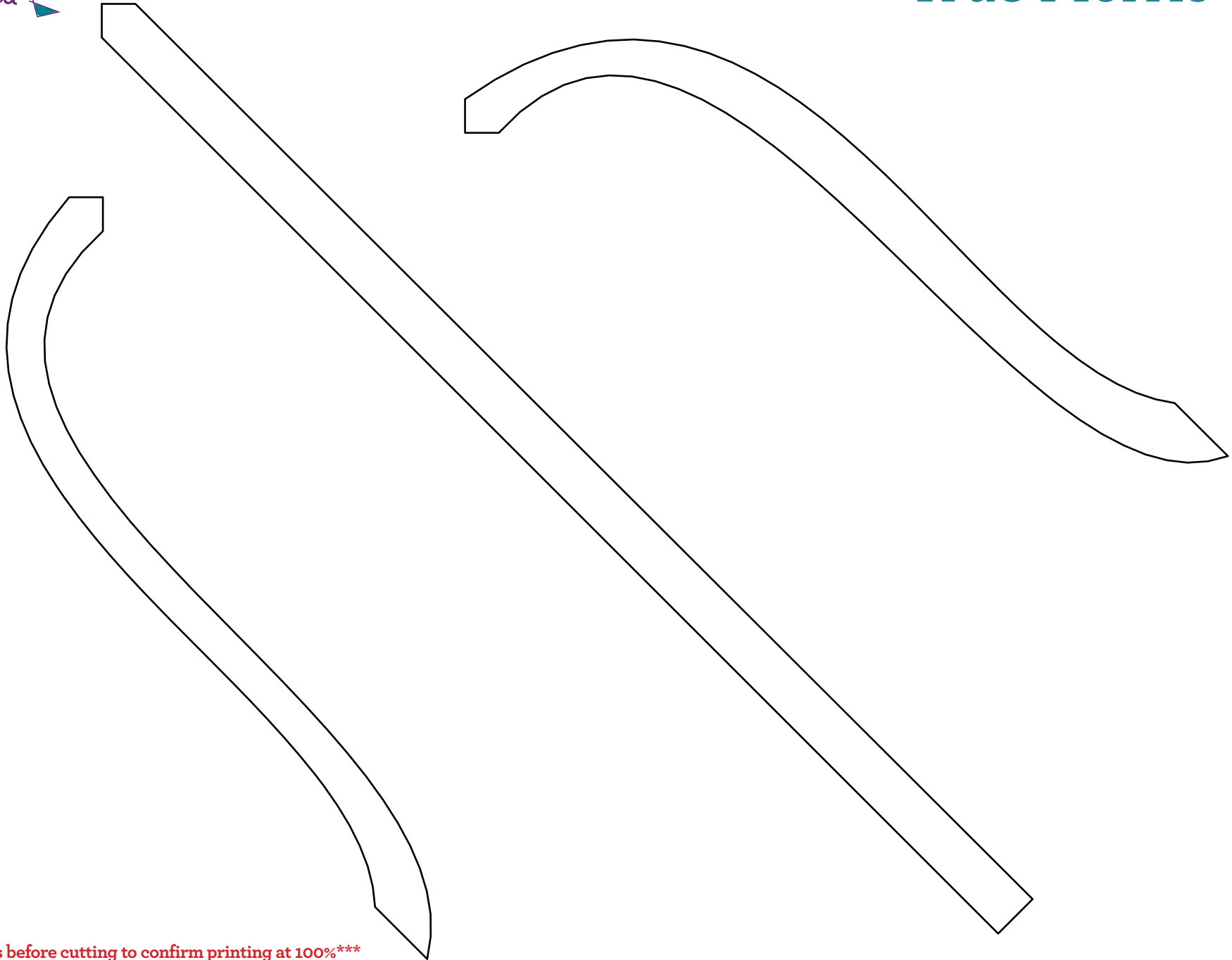




This square should measure 1" x 1" (2.54cm x 2.54cm) when printed.

***** Measure templates before cutting to confirm printing at 100%*****

True Morris Appliqué Stem Templates



This square should measure 1" x 1" (2.54cm x 2.54cm) when printed.

***** Measure templates before cutting to confirm printing at 100%*****