



Free Spirit 

Boldly Beautiful Quilt

Featuring Thameside by The Original
Morris & Co.

Big blocks blend with beautiful prints for a bold
quilt suitable for all tastes.

Collection: Thameside by The Original
Morris & Co.

Technique: Pieced

Skill Level: Beginner

**Finished
Sizes:** **Finished Project Size:** 64" x 80"
(162.56cm x 203.20cm)
Finished Block Size: 16" x 16"
(40.64cm x 40.64cm)

*All possible care has been taken to assure the accuracy of
this pattern. We are not responsible for printing errors or
the manner in which individual work varies. Please read the
instructions carefully before starting this project. If kitting, it is
recommended a sample is made to confirm accuracy.*

Project designed by Lucy A. Fazely | Tech edited by Alison M. Schmidt

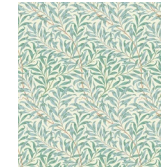
Fabric Requirements

DESIGN	COLOR	ITEM ID	YARDAGE
(A) Mini Strawberry Thief	Brick	PWWM002.BRICK	1¼ yards (1.14m)
(B) Willow Boughs	Cream	PWWM030.CREAM	1½ yards (1.37m)
(C) Blackthorn	Gold	PWWM055.GOLD	7⁄8 yard (0.80m)
(D) Pink & Rose	Blush	PWWM075.BLUSH	7⁄8 yard (0.80m)
(E) Seaweed	Marine	PWWM077.MARINE*	2 yards (1.83m)
(F) Mini Seaweed	Cream	PWWM078.CREAM	1¼ yards (1.14m)

* includes binding



(A)



(B)



(C)



(D)



(E)



(F)

Backing (Purchased Separately)

44" (1.12m) wide

Blackthorn	Cream	PWWM055.CREAM	5 yards (4.57m)
------------	-------	---------------	-----------------

OR

108" (2.74m) wide

Strawberry Thief	Linen	QBWM001.LINEN	2½ yards (2.29m)
------------------	-------	---------------	------------------



Backing
44"



Backing
108"

Additional Recommendations

- 100% cotton thread in colors to match
- 72" x 88" (1.83m x 2.24m) batting

Cutting

WOF = Width of Fabric

Fabrics A and F, cut:

- (7) $4\frac{7}{8}$ " (12.38cm) x WOF; sub cut
- (50) $4\frac{7}{8}$ " (12.38cm) squares

Fabric B, cut:

- (7) $4\frac{7}{8}$ " (12.38cm) x WOF; sub cut
- (50) $4\frac{7}{8}$ " (12.38cm) squares and
- (4) $4\frac{1}{2}$ " (11.43cm) squares
- (2) $4\frac{1}{2}$ " (11.43cm) x WOF; sub cut
- (16) $4\frac{1}{2}$ " (11.43cm) squares

Fabrics C and D, cut:

- (3) $8\frac{1}{2}$ " (21.59cm) x WOF; sub cut
- (10) $8\frac{1}{2}$ " (21.59cm) squares

Fabric E, cut:

- (7) $4\frac{7}{8}$ " (12.38cm) x WOF; sub cut
- (50) $4\frac{7}{8}$ " (12.38cm) squares and
- (4) $4\frac{1}{2}$ " (11.43cm) squares
- (2) $4\frac{1}{2}$ " (11.43cm) x WOF; sub cut
- (16) $4\frac{1}{2}$ " (11.43cm) squares
- (8) $2\frac{1}{2}$ " (6.35cm) x WOF (for binding)

Sewing

Note: Use a $\frac{1}{4}$ " (.64cm) seam allowance throughout. Sew all pieces with right sides together and raw edges even using matching thread.

Block Assembly

1. Cut all **Fabrics A, B, E, and F** $4\frac{7}{8}$ " (12.38cm) squares in half diagonally once. **Fig. 1**

Fig. 1



Cut all Fabrics A, B, E, and F $4\frac{7}{8}$ " squares in half diagonally.

2. Sew 1 each **Fabrics E and F** $4\frac{7}{8}$ " (12.38cm) triangles together along their long edges. Make a total of 100 Unit 1 ($4\frac{1}{2}$ " square unfinished). **Fig. 2**

Fig. 2



Make 100 Unit 1

3. Sew 1 each **Fabrics A and B** $4\frac{7}{8}$ " (12.38cm) triangles together along their long edges. Make a total of 100 Unit 2 ($4\frac{1}{2}$ " square unfinished). **Fig. 3**

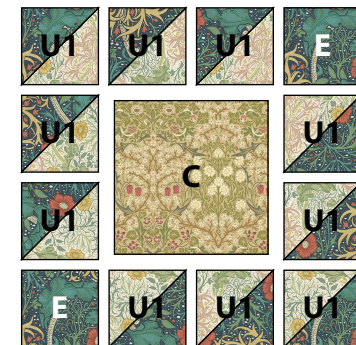
Fig. 3



Make 100 Unit 2

4. Arrange 10 Unit 1 and 2 **Fabric E** $4\frac{1}{2}$ " (11.43cm) squares around a **Fabric C** $8\frac{1}{2}$ " (21.59cm) square as shown. **Fig. 4**

Fig. 4



5. Stitch 2 Unit 1 together on right and left sides of block. Sew units and squares into rows. Sew rows together. **Fig. 5** Make a total of 10 Block 1 (16½" square unfinished). **Fig. 6**



Fig. 5



Fig. 6

Make 10 Block 1

6. In the same manner, arrange 10 Unit 2 and 2 **Fabric B** 4½" (11.43cm) squares around a **Fabric D** 8½" (21.59cm) square as shown. **Fig. 7** Stitch 2 Unit 2 together on right and left sides of block. Sew units and squares into rows. Sew rows together. **Fig. 8** Make a total of 10 Block 2 (16½" square unfinished). **Fig. 9**

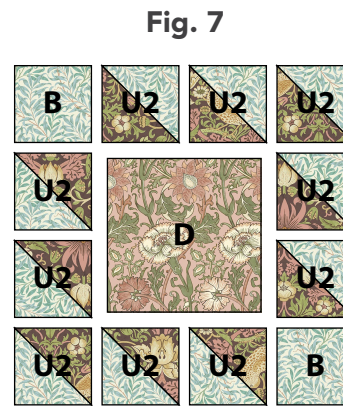


Fig. 7



Fig. 8

Fig. 9



Make 10 Block 2

Quilt Top Assembly

7. Noting **Quilt Layout** arrange the blocks into (5) horizontal rows, alternating blocks. Sew the blocks into rows, backstitching at top of top row and bottom of bottom row. Sew rows together. Backstitch at both ends of seams.

Finishing

8. Cut and piece the backing to measure 72" x 88" (183cm x 224cm). Layer the backing right side down, batting, and quilt top right side up. Quilt or tie as desired.
9. Prepare binding from (8) 2½" x WOF (6.35cm x WOF) **Fabric E** strips. Sew strips together into one long binding strip. Press strip in half lengthwise with wrong sides together.
10. Carefully trim backing and batting even with quilt top.
11. Leaving an 8" (20.32cm) tail of binding, sew binding to top of quilt through all layers matching all raw edges. Miter corners. Stop approximately 12" (30.48cm) from where you started. Lay both loose ends of binding flat along quilt edge. Where these two loose ends meet, fold them back on themselves and press to form a crease. Using this crease as your stitching line, sew the two open ends of the binding together right sides together. Trim seam to ¼" (.64cm) and press open. Finish sewing binding to quilt.
12. Turn binding to back of quilt and blind stitch in place.

Quilt Layout

