



**THE SOLUTION  
FOR SUSCEPTIBLE TO CORROSION  
APPLICATIONS**

**PP-CR®**



PP-CR has been developed based on our approved Polypropylene.

Crevice corrosion between the clamp halves and the tube is effectively retarded by a special corrosion inhibitor.

These properties have been tested and successfully approved in a salt spray test according to DIN EN ISO 9227.

Tube Clamps made of PP-CR are available in all standard dimensions of our approved RSB-TUBE CLAMP range.

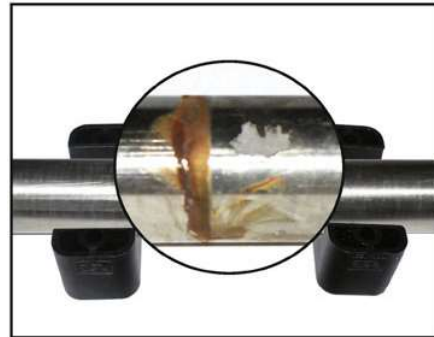
Tube Clamps made of PP-CR are available in slate gray colour.



# THE CORROSION INHIBITOR – TUBE CLAMPS MADE OF PP-CR®

clamp size	O.D. mm <b>d<sub>1</sub></b>	Inch O.D.	1 part / 2 clamp-halves <b>RAPG</b>
1	4	1/4 5/16 3/8	RAPG-104/CR RAPG-106/CR RAPG-106,4/CR RAPG-108/CR RAPG-109,5/CR RAPG-110/CR RAPG-112/CR RAPG-112,7/CR
	6		
	6,4		
	8		
	9,5		
	10		
	12		
2	12,7	1/2 5/8	RAPG-212,7/CR RAPG-213,5/CR RAPG-214/CR RAPG-215/CR RAPG-216/CR RAPG-217,2/CR RAPG-218/CR
	13,5		
	14		
	15		
	16		
	17,2		
3	19	3/4 1	RAPG-319/CR RAPG-320/CR RAPG-321,3/CR RAPG-322/CR RAPG-323/CR RAPG-325/CR RAPG-325,4/CR
	20		
	21,3		
	22		
	23		
	25		
4	25,4	1	RAPG-426,9/CR RAPG-428/CR RAPG-430/CR
	26,9		
	28		
5	30	1 1/4 1 1/2	RAPG-532/CR RAPG-533,7/CR RAPG-535/CR RAPG-538/CR RAPG-540/CR RAPG-542/CR
	32		
	33,7		
	35		
	38		
	40		
6	42	1 3/4 2	RAPG-644,5/CR RAPG-645/CR RAPG-648/CR RAPG-650/CR RAPG-650,8/CR RAPG-652/CR RAPG-654/CR RAPG-655/CR RAPG-657/CR
	44,5		
	45		
	48		
	50		
	50,8		
	52		
	54		
	55		
	57		
7	57,2	2 1/4 2 1/2 2 3/4 3	RAPG-757,2/CR RAPG-760,3/CR RAPG-763,5/CR RAPG-770/CR RAPG-773/CR RAPG-776,1/CR
	60,3		
	63,5		
	70		
	73		
	76,1		
8	88,9	3 1/2 4	RAPG-888,9/CR RAPG-8101,8/CR
	101,8		

STAINLESS STEEL TUBE (316TI)  
AFTER 4500 H SALT SPRAY TEST



Result with standard Polypropylene



Result with PP-CR

### Advantages

- Enormous reduction of crevice corrosion
- Extension of maintenance intervals
- cost reduction due to extended durability of the tubing