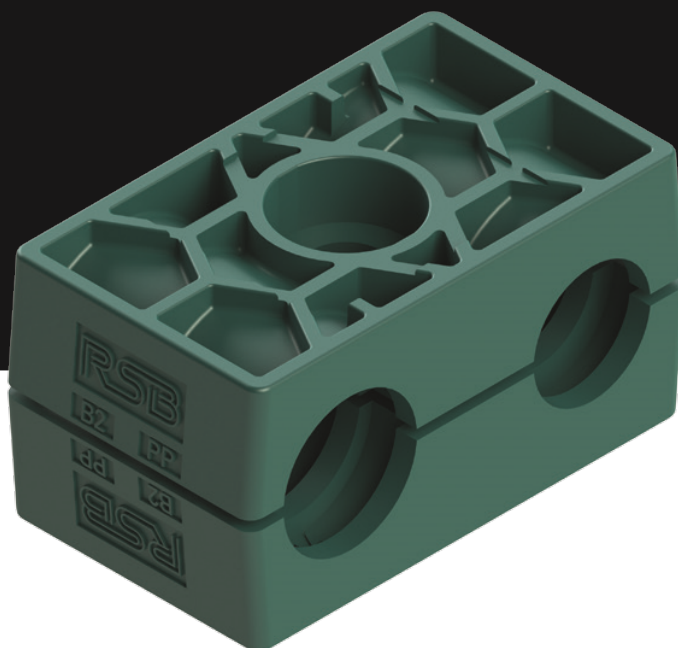
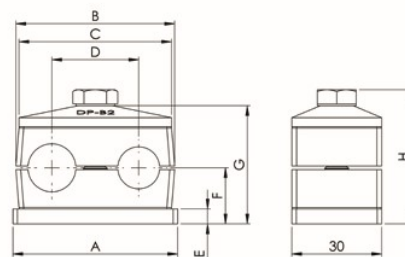


// 03

TUBE CLAMPS SERIES B



// DIMENSIONS AND WEIGHTS OF TUBE CLAMPS, COMPLETE (MM)



SIZE	A	B	C	D	E	F		G		H		WEIGHT / 10 PCS. RBPR3-xxx (kg)
						Grooved	Smooth	Grooved	Smooth	Grooved	Smooth	
1	37	36	34	20	3	16,5	16	37	36	41	40	0,74
	1.46	1.42	1.34	0.79	0.12	0.65	0.63	1.46	1.42	1.61	1.57	
2	55	53	51	29	5	18,7	18,1	39,4	38,2	44,7	43,5	1,32
	2.17	2.09	2.01	1.14	0.20	0.74	0.71	1.55	1.50	1.76	1.71	
3	70	67	64	36	5	23,5	22,7	49	47,4	54,3	52,7	1,73
	2.76	2.64	2.52	1.42	0.20	0.93	0.89	1.93	1.87	2.14	2.07	
4	85	82	78	45	5	26	25	54	52	59,3	57,3	2,13
	3.35	3.23	3.07	1.77	0.20	1.02	0.98	2.13	2.05	2.33	2.26	
5	110	106	102	56	5	32	31	66	64	71,3	69,3	3,01
	4.33	4.17	4.02	2.20	0.20	1.26	1.22	2.60	2.52	2.81	2.73	

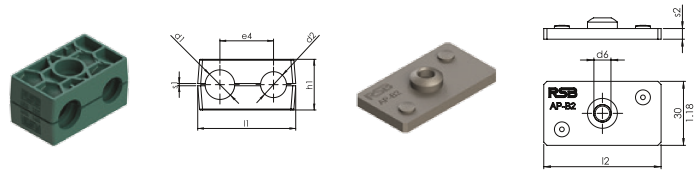
dimensions $\frac{\text{mm}}{\text{Inch}}$

The weight was determined with the smallest diameter (see catalogue) and the standard model of the steel parts of the respective quantity in bulk.

Order codes for clamp-halves:

Polypropylene **RBPR**
 inside smooth **RBPG²⁾**
 Polyamide 6 **RBNR**
 inside smooth **RBNG²⁾**
 Rubber **RBVG^{2) 3)}**

Replace standard abbreviation RBPR in column "clamp-halves" as required.



SIZE	O.D. mm d ₁ /d ₂	Tube NB	Inch O.D.	RBPR	RBPR...				APZ3-B			
				1 part / 2 clamp-halves ¹⁾	2 clamp-halves				Weld plate with locking device			
					l ₁	h ₁	e ₄	s ₁		l ₂	s ₂	d ₆
1	6	G 1/8	1/4	RBPR-106	36	27	20	1,0	APZ3-B 1	37	3	M 6
	6,4			RBPR-106,4								
	8			RBPR-108								
	9,5			RBPR-109,5								
	10			RBPR-110								
	12			RBPR-112								
2	12,7	G 1/4	1/2	RBPR-212,7	53	27,4	29	1,2	APZ3-B 2	55	5	M 8
	13,5			RBPR-213,5								
	14			RBPR-214								
	15			RBPR-215								
	16	G 3/8	5/8	RBPR-216								
	17,2			RBPR-217,2								
	18			RBPR-218								
3	19	G 1/2	3/4	RBPR-319	67	37	36	1,6	APZ3-B 3	70	5	M 8
	20			RBPR-320								
	21,3			RBPR-321,3								
	22			RBPR-322								
	25			RBPR-325								
	25,4			RBPR-325,4								
4	26,9	G 3/4	1	RBPR-426,9	82	42	45	2	APZ3-B 4	85	5	M 8
	28			RBPR-428								
	30			RBPR-430								
5	32	G 1	1 1/4	RBPR-532	106	54	56	2	APZ3-B 5	110	5	M 8
	33,7			RBPR-533,7								
	35			RBPR-535								
	38			RBPR-538								
	40	G 1 1/4	1 1/2	RBPR-540								
	42			RBPR-542								

dimensions mm
Inch

All metal parts available in stainless steel.

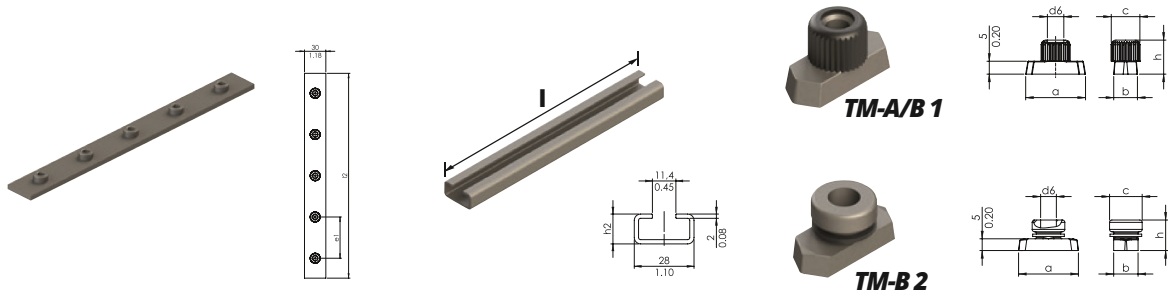
¹⁾Twin-tube clamps with different outer tube diameter upon request ²⁾without prestress

³⁾When assembling solid rubber tube clamps, cover plates, hexagon screws and locking washers must be used



TUBE CLAMPS SERIES B (TWIN-TUBE CLAMP) | DIN 3015, PART 3 | COMPONENTS

Complete range please refer to pages 34 to 35.



SIZE	APR-B Multiple weld plate	TS-A/B Mounting rail		TM Rail nut									
		e ₁	l ₂	l	h ₂	a	b	c	d ₆	h			
1	APR-B 1 5 Clamps	40	196	TS 11-A/B 1 TS 11-A/B 2 TS 14-A/B 1 TS 14-A/B 2 TS 30-A/B 1 TS 30-A/B 2	1 m	11	TM-A/B 1	25,4	10,4	12	M 6	14,5	
		1.57	7.72					1.00	0.41	0.47	1/4-20 UNC	0.57	
2	APR-B 2 5 Clamps	58	288		3.28 ft	0.43		TM-B 2	25,4	10,4	14	M 8	13
					2 m	11							
		6.56 ft	0.43										
		1 m	14										
3	APR-B 3 5 Clamps	72	358		3.28 ft	0.55		1.00	0.41	0.55	5/16-18 UNC	0.51	
		2.83	14.10		2 m	14							
4	APR-B 4 5 Clamps	90	446		6.56 ft	0.55		1.00	0.41	0.55	5/16-18 UNC	0.51	
					1 m	30							
		3.28 ft	1.18										
		2 m	30										
5	APR-B 5 5 Clamps	112	558	6.56 ft	1.18								
		4.41	22.00										

dimensions $\frac{\text{mm}}{\text{Inch}}$

All metal parts available in stainless steel.



TUBE CLAMPS SERIES B (TWIN-TUBE CLAMP) | DIN 3015, PART 3 | COMPONENTS

Complete range please refer to pages 34 to 35.



DIN 931/933

ISO 4762

SIZE	DP-B Cover plate		SS-B Hexagon head screw			IS-B Hexagon socket head screw					
	l_3	d_7	d	x	l	d	x	l			
1	DP-B 1	34	7	SS-B 1 (SSL-A 2)	M 6	x	35	IS-B 1 (IS-A 4)	M 6	x	35
		1.34	0.28		$\frac{1}{4}$ -20 UNC x $1\frac{3}{8}$	$\frac{1}{4}$ -20 UNC x $1\frac{3}{8}$					
2	DP-B 2	51	9	SS-B 2	M 8	x	35	IS-B 2	M 8	x	35
		2.01	0.35		$\frac{5}{16}$ -18 UNC x $1\frac{3}{8}$	$\frac{5}{16}$ -18 UNC x $1\frac{3}{8}$					
3	DP-B 3	64	9	SS-B 3	M 8	x	45	IS-B 3	M 8	x	45
		2.52	0.35		$\frac{5}{16}$ -18 UNC x $1\frac{3}{4}$	$\frac{5}{16}$ -18 UNC x $1\frac{3}{4}$					
4	DP-B 4	78	9	SS-B 4	M 8	x	50	IS-B 4	M 8	x	50
		3.07	0.35		$\frac{5}{16}$ -18 UNC x 2	$\frac{5}{16}$ -18 UNC x 2					
5	DP-B 5	102	9	SS-B 5	M 8	x	60	IS-B 5	M 8	x	60
		4.02	0.35		$\frac{5}{16}$ -18 UNC x $2\frac{3}{4}$	$\frac{5}{16}$ -18 UNC x $2\frac{3}{4}$					

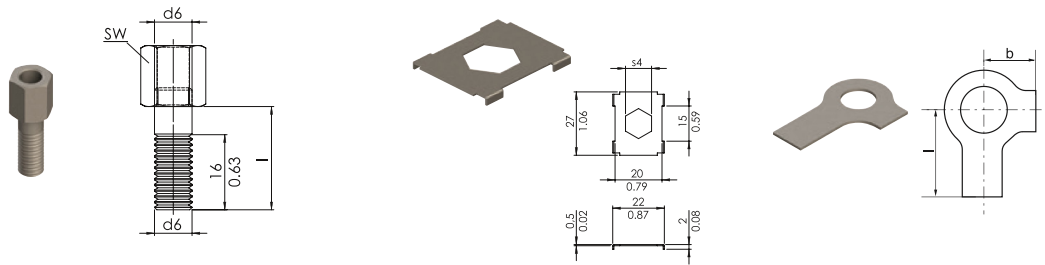
dimensions $\frac{\text{mm}}{\text{Inch}}$

All metal parts available in stainless steel.



TUBE CLAMPS SERIES B (TWIN-TUBE CLAMP) | DIN 3015, PART 3 | COMPONENTS

Complete range please refer to pages 34 to 35.



SIZE	AS-B Stacking bolt ¹⁾			SB-B Locking plate ¹⁾		US Locking washer ²⁾			
	l	d ₆	sw	S ₄	b	l			
1	AS-B 1 (AS-A 0/A 1)	20	M6	11	SB-B 1	11	US-A	9	18
		0.79	¼-20 UNC	0.43		1.18		0.35	0.71
2	AS-B 2	20	M 8	12	SB-B 2	12	US-B 2	11	20
		0.79	5/16-18 UNC	0.47					
3	AS-B 3	25	M 8	12	SB-B 2	0.47	US-B 2	11	20
		0.98	5/16-18 UNC	0.47					
4	AS-B 4	28	M 8	12	SB-B 2	0.47	US-B 2	11	20
		1.10	5/16-18 UNC	0.47					
5	AS-B 5	34	M 8	12	SB-B 2	0.47	US-B 2	11	20
		1.34	5/16-18 UNC	0.47					

dimensions $\frac{\text{mm}}{\text{Inch}}$

All metal parts available in stainless steel.

¹⁾The usage of stacking bolts necessitates the deployment of locking plates during the construction assembly

²⁾When assembling solid rubber clamps, cover plates, hexagon screws and locking washers must be used



Order codes for clamp-halves:

Polypropylene **RBPR**
 inside smooth **RBPG**
 Polyamide 6 **RBNR**
 inside smooth **RBNG**
 Rubber **RBVG³⁾**

Replace standard abbreviation RBPR in column "Order codes" as required.

2 clamp halves with weld plate, cover plate and hexagon head screw



2 clamp halves with weld plate, cover plate and hexagon socket head screw



2 clamp halves with rail nut, cover plate and hexagon head screw



SIZE	O.D. mm	Tube NB	Inch O.D.	Order Codes	Order Codes	Order Codes
1	6	G 1/8	1/4	RBPR 1-106	RBPR 3-106	RBPR 4-106
	6,4			RBPR 1-106,4	RBPR 3-106,4	RBPR 4-106,4
	8			RBPR 1-108	RBPR 3-108	RBPR 4-108
	9,5			RBPR 1-109,5	RBPR 3-109,5	RBPR 4-109,5
	10			RBPR 1-110	RBPR 3-110	RBPR 4-110
	12			RBPR 1-112	RBPR 3-112	RBPR 4-112
2	12,7	G 1/4	1/2	RBPR 1-212,7	RBPR 3-212,7	RBPR 4-212,7
	13,5			RBPR 1-213,5	RBPR 3-213,5	RBPR 4-213,5
	14			RBPR 1-214	RBPR 3-214	RBPR 4-214
	15			RBPR 1-215	RBPR 3-215	RBPR 4-215
	16	G 3/8	5/8	RBPR 1-216	RBPR 3-216	RBPR 4-216
	17,2			RBPR 1-217,2	RBPR 3-217,2	RBPR 4-217,2
	18			RBPR 1-218	RBPR 3-218	RBPR 4-218
3	19	G 1/2	3/4	RBPR 1-319	RBPR 3-319	RBPR 4-319
	20			RBPR 1-320	RBPR 3-320	RBPR 4-320
	21,3			RBPR 1-321,3	RBPR 3-321,3	RBPR 4-321,3
	22			RBPR 1-322	RBPR 3-322	RBPR 4-322
	25			RBPR 1-325	RBPR 3-325	RBPR 4-325
	25,4			1	RBPR 1-325,4	RBPR 3-325,4
4	26,9	G 3/4	1	RBPR 1-426,9	RBPR 3-426,9	RBPR 4-426,9
	28			RBPR 1-428	RBPR 3-428	RBPR 4-428
	30			RBPR 1-430	RBPR 3-430	RBPR 4-430
5	32	G 1	1 1/4	RBPR 1-532	RBPR 3-532	RBPR 4-532
	33,7			RBPR 1-533,7	RBPR 3-533,7	RBPR 4-533,7
	35			RBPR 1-535	RBPR 3-535	RBPR 4-535
	38			RBPR 1-538	RBPR 3-538	RBPR 4-538
	40	G 1 1/4	1 1/2	RBPR 1-540	RBPR 3-540	RBPR 4-540
	42			RBPR 1-542	RBPR 3-542	RBPR 4-542

If different combinations are required, we would be obliged if they could be ordered as separate components (Please refer to individual components, pages 30 – 33). Delivery in unassembled individual components.

³⁾When assembling solid rubber tube clamps, cover plates, hexagon screws and locking washers must be used

TUBE CLAMPS SERIES B | COMPLETE RANGE

Order codes for clamp-halves:

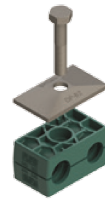
Polypropylene **RBPR**
 inside smooth **RBPG**
 Polyamide 6 **RBNR**
 inside smooth **RBNG**
 Rubber **RBVG³⁾**

Replace standard abbreviation RBPR in column "Order codes" as required.

2 clamp halves with rail nut, cover plate and hexagon socket head screw

2 clamp halves with stacking bolt and locking plate

2 clamp halves with cover plate and hexagon head screw



SIZE	O.D. mm d ₁	Tube NB	Inch O.D.	Order Codes	Order Codes	Order Codes
1	6	G 1/8	1/4	RBPR 5-106	RBPR 8-106	RBPR 16-106
	6,4			RBPR 5-106,4	RBPR 8-106,4	RBPR 16-106,4
	8			RBPR 5-108	RBPR 8-108	RBPR 16-108
	9,5			RBPR 5-109,5	RBPR 8-109,5	RBPR 16-109,5
	10			RBPR 5-110	RBPR 8-110	RBPR 16-110
	12			RBPR 5-112	RBPR 8-112	RBPR 16-112
2	12,7	G 1/4	1/2	RBPR 5-212,7	RBPR 8-212,7	RBPR 16-212,7
	13,5			RBPR 5-213,5	RBPR 8-213,5	RBPR 16-213,5
	14			RBPR 5-214	RBPR 8-214	RBPR 16-214
	15			RBPR 5-215	RBPR 8-215	RBPR 16-215
	16	G 3/8	5/8	RBPR 5-216	RBPR 8-216	RBPR 16-216
	17,2			RBPR 5-217,2	RBPR 8-217,2	RBPR 16-217,2
	18			RBPR 5-218	RBPR 8-218	RBPR 16-218
3	19	G 1/2	3/4	RBPR 5-319	RBPR 8-319	RBPR 16-319
	20			RBPR 5-320	RBPR 8-320	RBPR 16-320
	21,3			RBPR 5-321,3	RBPR 8-321,3	RBPR 16-321,3
	22			RBPR 5-322	RBPR 8-322	RBPR 16-322
	25			1	RBPR 5-325	RBPR 8-325
25,4	RBPR 5-325,4	RBPR 8-325,4	RBPR 16-325,4			
4	26,9	G 3/4		RBPR 5-426,9	RBPR 8-426,9	RBPR 16-426,9
	28			RBPR 5-428	RBPR 8-428	RBPR 16-428
	30			RBPR 5-430	RBPR 8-430	RBPR 16-430
5	32	G 1	1 1/4	RBPR 5-532	RBPR 8-532	RBPR 16-532
	33,7			RBPR 5-533,7	RBPR 8-533,7	RBPR 16-533,7
	35			RBPR 5-535	RBPR 8-535	RBPR 16-535
	38	G 1 1/4	1 1/2	RBPR 5-538	RBPR 8-538	RBPR 16-538
	40			RBPR 5-540	RBPR 8-540	RBPR 16-540
	42			RBPR 5-542	RBPR 8-542	RBPR 16-542

If different combinations are required, we would be obliged if they could be ordered as separate components (Please refer to individual components, pages 30 – 33). Delivery in unassembled individual components.

³⁾When assembling solid rubber tube clamps, cover plates, hexagon screws and locking washers must be used