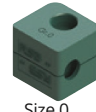


Order codes for clamp-halves:

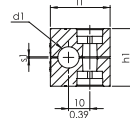
- Polypropylene **RAPR**
- inside smooth **RAPG²⁾**
- Polyamide 6 **RANR**
- inside smooth **RANG²⁾**
- Rubber **RAVR^{3) 4)}**
- RAVG^{2) 3)}**
- RAAR¹⁾**

Aluminium

Replace standard abbreviation RAPR in column "clamp-halves" as required.



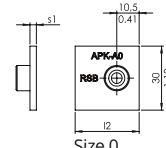
Size 0



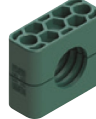
Size 0



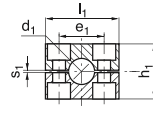
Size 0



Size 0



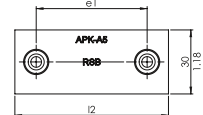
Size 1-8



Size 1-8



Size 1-8



Size 1-8

SIZE	O.D. mm	Tube NB	Inch O.D.	RAPR 1 part / 2 clamp-halves	RAPR-... 2 clamp-halves				APK-A Weld plate			
					l ₁	h ₁	e ₁	s ₁	e ₁	l ₂	s ₁	
0	4	G 1/8	1/4	RAPR-004 RAPR-006 RAPR-006,4 RAPR-008 RAPR-009,5 RAPR-010 RAPR-012	28	27	-	0,6	APK-A 0	-	30	3
	1.10				1.06	0,02		1.18				
1	4	G 1/8	1/4	RAPR-104 RAPR-106 RAPR-106,4 RAPR-108 RAPR-109,5 RAPR-110 RAPR-112	34	27	20	0,6	APK-A 1	20	36	3
	1.34				1.06	0.79	0.02	0.79				
2	12,7	G 3/8	1/2	RAPR-212,7 RAPR-213,5 RAPR-214 RAPR-215 RAPR-216 RAPR-217,2 RAPR-218	42	33	26	0,8	APK-A 2	26	42	3
	1.65		1.30		1.02	0.03	1.02	1.65				
3	19	G 1/2	3/4	RAPR-319 RAPR-320 RAPR-321,3 RAPR-322 RAPR-323 RAPR-325 RAPR-325,4	49	35	33	1	APK-A 3	33	50	3
	1.93		1.38		1.30	0.04	1.30	1.65				
4	26,9	G 3/4	1	RAPR-426,9 RAPR-428 RAPR-428,6 RAPR-430	59	42	40	1,2	APK-A 4	40	59	3
	2.32				1.65	1.57	0.05	1.57				
5	32	G 1	1 1/4	RAPR-532 RAPR-533,7 RAPR-535 RAPR-538 RAPR-540 RAPR-542	71	58	52	1,2	APK-A 5	52	72	3
	2.80		2.28		2.05	0.05	2.05	2.83				
6	44,5	G 1 1/2	1 3/4	RAPR-644,5 RAPR-645 RAPR-648 RAPR-650 RAPR-650,8 RAPR-652 RAPR-654 RAPR-655 RAPR-657	86	66	66	1,2	APK-A 6	66	88	3
	3.39		2.60		2.60	0.05	2.60	3.46				
7	57,2	G 2	2 1/4	RAPR-757,2 RAPR-760,3 RAPR-763,5 RAPR-770 RAPR-773 RAPR-776,1	121	93,6	94	1,6	APK-A 7	94	122	5
	4.76		3.69		3.70	0.06	3.70	4.80				
8	88,9	G 3	3 1/2	RAPR 888,9 RAPR 8101,8	147	117,6	120	1,6	APK-A 8	120	148	5
	5.79		4.63		4.72	0.06	4.72	5.83				

dimensions mm
Inch

All metal parts available in stainless steel. ¹⁾Aluminium in sizes 0 to 6
²⁾without prestress ³⁾When assembling solid rubber tube clamps, cover plates,
 hexagon screws and locking washers must be used ⁴⁾Rubber in sizes 1 to 5w

