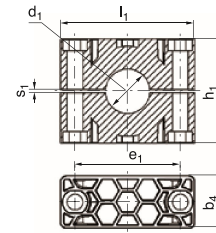
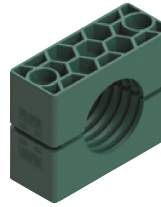


Order codes for clamp-halves:

- Polypropylene **RCPR**
- inside smooth **RCPG^(1) 2)**
- Polyamide 6 **RCNR**
- inside smooth **RCNG^(1) 2)**
- Rubber **RCVR^(1) 3)**
- RCVG^(1) 2) 3)**
- Aluminium **RCAR**

Replace standard abbreviation RCPR in column "clamp-halves" as required.



SIZE	O.D. mm d ₁	Tube NB	Inch O.D.	RCPR 1 part / 2 clamp-halves	RCPR-... 2 clamp-halves				
					l ₁	h ₁	e ₁	s ₁	b ₄
1	6	G 1/8	5/16	RCPR-106	56	32	33	2	30
	8			RCPR-108					
	9,5			RCPR-109,5					
	10			RCPR-110					
	12			RCPR-112					
	12,7	RCPR-112,7	2.20	1.26	1.30	0.08	1.18		
	13,5	RCPR-113,5							
	14	RCPR-114							
	15	RCPR-115							
	16	RCPR-116							
17,2	RCPR-117,2								
18	RCPR-118								
2	19	G 1/2	3/4	RCPR-219	71	48	45	2	30
	20			RCPR-220					
	21,3			RCPR-221,3					
	22			RCPR-222					
	23			RCPR-223					
	25	RCPR-225	2.80	1.89	1.77	0.08	1.18		
	25,4	RCPR-225,4							
	26,9	RCPR-226,9							
	28	RCPR-228							
	30	RCPR-230							
3	30	G 1	1 1/4	RCPR-330	86	60	60	2	30
	32			RCPR-332					
	33,7			RCPR-333,7					
	35	RCPR-335	3.39	2.36	2.36	0.08	1.18		
	38	RCPR-338							
	40	RCPR-340							
42	RCPR-342								
4	38	G 1 1/4	1 1/2	RCPR-438	117	90	90	3	45
	40			RCPR-440					
	42			RCPR-442					
	45			RCPR-445					
	48,3	G 1 1/2	2	RCPR-448,3	4.61	3.54	3.54	0.12	1.77
	50	RCPR-450							
	51	RCPR-451							
	52	RCPR-452							
	55	RCPR-455	G 2	2 1/4	RCPR-457	60,3	63	65	70
	57	RCPR-460,3							
	60,3	RCPR-463							
	63	RCPR-465							
	65	RCPR-470							
	70	RCPR-470							

dimensions $\frac{\text{mm}}{\text{Inch}}$

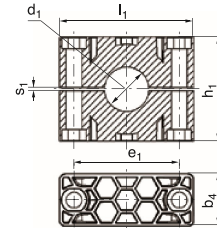
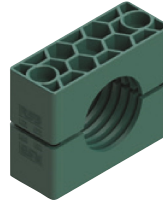
¹⁾Only Size 1-8 ²⁾without prestress

³⁾When assembling solid rubber tube clamps, cover plates, hexagon screws and locking washers must be used

Order codes for clamp-halves:

Polypropylene **RCPR**
 inside smooth **RCPG^(1) 2)**
 Polyamide 6 **RCNR**
 inside smooth **RCNG^(1) 2)**
 Rubber **RCVR^(1) 3)**
RCVG^(1) 2) 3)
 Aluminium **RCAR**

Replace standard abbreviation RCPR in column "clamp-halves" as required.



SIZE	O.D. mm	Tube NB	Inch O.D.	RCPR 1 part / 2 clamp-halves	RCPR-... 2 clamp-halves				
	d ₁				l ₁	h ₁	e ₁	s ₁	b ₄
5	65	G 2 1/2	2 3/4	RCPR-565	154	120	122	5	60
	70			RCPR-570					
	73			RCPR-573					
	75			RCPR-575					
	76,1	G 3	3 1/2	RCPR-576,1	6.06	1.26	1.30	0.08	1.18
	80			RCPR-580					
	82,5			RCPR-582,5					
	85			RCPR-585					
88,9	G 3	3 1/2	RCPR-588,9	6.06	1.26	1.30	0.08	1.18	
90			RCPR-590						
6	90	G 3 1/2	4	RCPR-690	206	168	168	6	80
	97			RCPR-697					
	100			RCPR-6100					
	101,6	G 4	4 1/2	RCPR-6101,6	8.11	6.61	6.61	0.24	3.15
	108			RCPR-6108					
	114,3			RCPR-6114,3					
127	G 4	5	RCPR-6127	8.11	6.61	6.61	0.24	3.15	
			RCPR-6127						
7	127	G 5	5	RCPR-7127	251	200	205	6	90
	130			RCPR-7130					
	133			RCPR-7133					
	140			RCPR-7140					
	150	G 6	6	RCPR-7150	9.88	7.87	8.07	0.24	3.54
	152,4			RCPR-7152,4					
	159			RCPR-7159					
	165,1			RCPR-7165,1					
168,3	G 6	6	RCPR-7168,3	9.88	7.87	8.07	0.24	3.54	
			RCPR-7168,3						
8	168,3	G 6	8	RCPR-8168,3	320	270	265	6	120
	177,8			RCPR-8177,8					
	193,7			RCPR-8193,7					
	203	G 8	8	RCPR-8203	12.60	10.63	10.43	0.24	4.72
	219,1			RCPR-8219,1					
	220			RCPR-8220					
9	219,1	G 8		RCPR-9219,1	470	410	395	20	162
	244,5			RCPR-9244,5					
	273	G 10		RCPR-9273	18.50	16.14	15.55	0.79	6.38
	323,9			RCPR-9323,9					
10	355,6	G 14		RCPR-10355,6	630	530	534	20	182
	406,4			RCPR-10406,4					
		G 16			24.80	20.87	21.02	0.79	7.17

dimensions $\frac{\text{mm}}{\text{inch}}$

¹⁾Only Size 1-8 ²⁾without prestress

³⁾When assembling solid rubber tube clamps, cover plates, hexagon screws and locking washers must be used