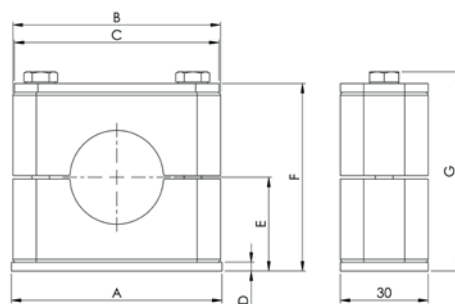
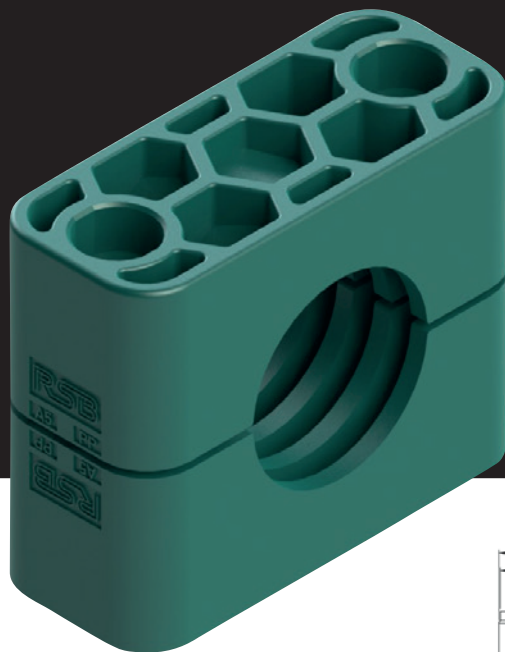


// 02

# TUBE CLAMPS SERIES



## // DIMENSIONS AND WEIGHTS OF TUBE CLAMPS, COMPLETE (MM)

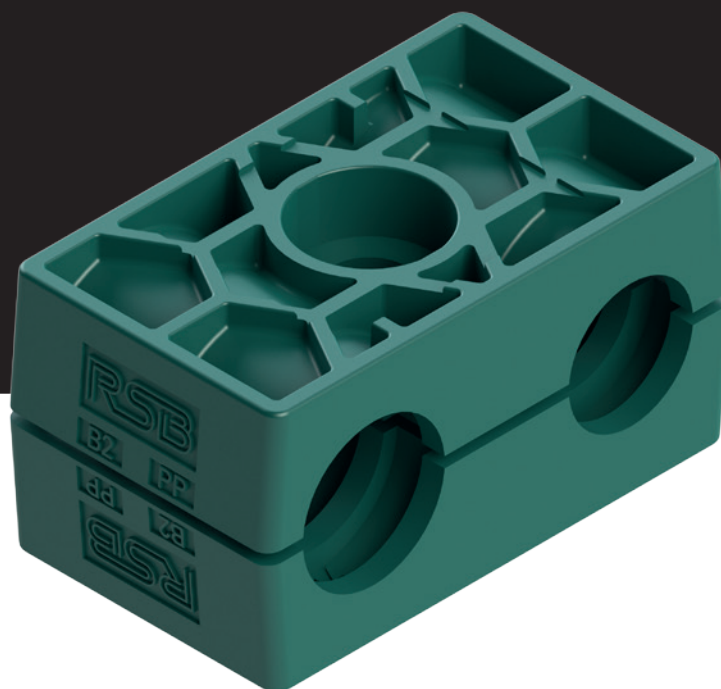
SIZE	A	B	C	D	E		F		G		WEIGHT / 10 PCS. RAPR3-xxx (kg)
					Grooved	Smooth	Grooved	Smooth	Grooved	Smooth	
0	30	28	28	3	16,5	16,2	33	32,4	37	36,4	0,66
	1.18	1.10	1.10	0.12	0.65	0.64	1.30	1.28	1.46	1.43	
1	36	34	34	3	16,5	16,2	33	32,4	37	36,4	0,82
	1.42	1.34	1.34	0.12	0.65	0.64	1.30	1.28	1.46	1.43	
2	42	42	40	3	19,5	19,1	39	38,2	43	42,2	0,98
	1.65	1.65	1.57	0.12	0.77	0.75	1.54	1.50	1.69	1.66	
3	50	49	48	3	20,5	20	41	40	45	44	1,14
	1.97	1.93	1.89	0.12	0.81	0.79	1.61	1.57	1.77	1.73	
4	59	59	57	3	24	23,4	48	46,8	52	50,8	1,36
	2.32	2.32	2.24	0.12	0.94	0.92	1.89	1.84	2.05	2.00	
5	72	71	70	3	32	31,4	64	62,8	68	66,8	1,83
	2.83	2.80	2.76	0.12	1.26	1.24	2.52	2.47	2.68	2.63	
6	88	86	86	3	36	35,4	72	70,8	76	74,8	2,22
	3.46	3.39	3.39	0.12	1.42	1.39	2.83	2.79	2.99	2.94	
7	122	121	120	5	51,8	51	103,6	102	107,6	106	4,55
	4.80	4.76	4.72	0.20	2.04	2.01	4.08	4.02	4.24	4.17	
8	148	147	146	5	63,8	63	127,6	126	131,6	130	6,18
	5.83	5.79	5.75	0.20	2.51	2.48	5.02	4.96	5.18	5.12	

The weight was determined with the smallest diameter (see catalogue) and the standard model of the steel parts of the respective quantity in bulk.

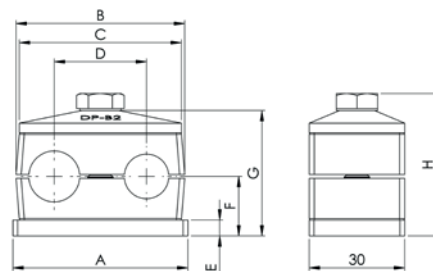
dimensions  $\frac{\text{mm}}{\text{Inch}}$

// 03

# TUBE CLAMPS SERIES B



## // DIMENSIONS AND WEIGHTS OF TUBE CLAMPS, COMPLETE (MM)



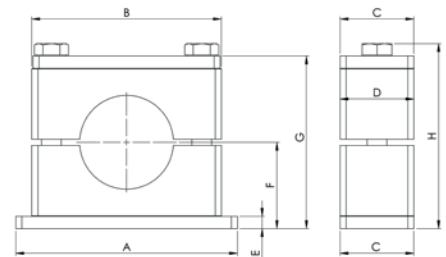
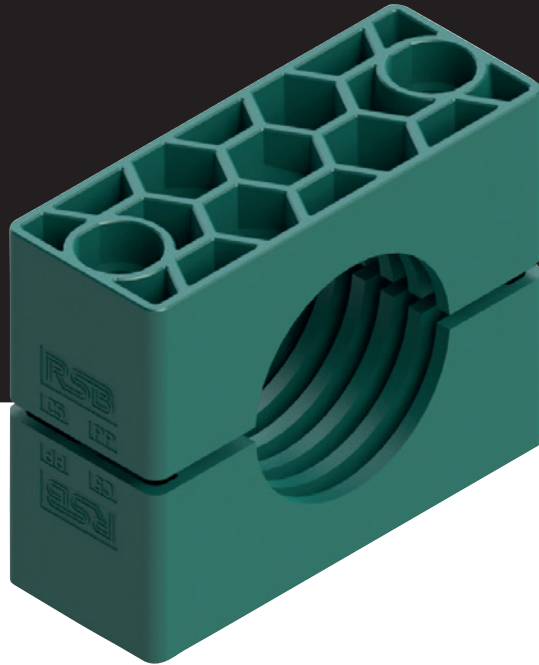
SIZE	A	B	C	D	E	F		G		H		WEIGHT / 10 PCS. RBPR3-xxx (kg)
						Grooved	Smooth	Grooved	Smooth	Grooved	Smooth	
1	37	36	34	20	3	16,5	16	37	36	41	40	0,74
	1.46	1.42	1.34	0.79	0.12	0.65	0.63	1.46	1.42	1.61	1.57	
2	55	53	51	29	5	18,7	18,1	39,4	38,2	44,7	43,5	1,32
	2.17	2.09	2.01	1.14	0.20	0.74	0.71	1.55	1.50	1.76	1.71	
3	70	67	64	36	5	23,5	22,7	49	47,4	54,3	52,7	1,73
	2.76	2.64	2.52	1.42	0.20	0.93	0.89	1.93	1.87	2.14	2.07	
4	85	82	78	45	5	26	25	54	52	59,3	57,3	2,13
	3.35	3.23	3.07	1.77	0.20	1.02	0.98	2.13	2.05	2.33	2.26	
5	110	106	102	56	5	32	31	66	64	71,3	69,3	3,01
	4.33	4.17	4.02	2.20	0.20	1.26	1.22	2.60	2.52	2.81	2.73	

dimensions  $\frac{\text{mm}}{\text{Inch}}$

The weight was determined with the smallest diameter (see catalogue) and the standard model of the steel parts of the respective quantity in bulk.

// 04

# TUBE CLAMPS SERIES C



## // DIMENSIONS AND WEIGHTS OF TUBE CLAMPS, COMPLETE (MM)

SIZE	A	B	C	D	E	F		G		H		WEIGHT / 10 PCS. RCPR3-xxx (kg)
						Grooved	Smooth	Grooved	Smooth	Grooved	Smooth	
1	73	56	30	30	8	24	23	48	46	54,4	52,4	0,31
	2.87	2.20	1.18	1.18	0.31	0.94	0.91	1.89	1.81	2.14	2.06	
2	84	71	30	30	8	32	31	64	62	70,4	68,4	0,41
	3.31	2.80	1.18	1.18	0.31	1.26	1.22	2.52	2.44	2.77	4.00	
3	100	86	30	30	8	38	37	76	74	82,4	80,4	0,48
	3.94	3.39	1.18	1.18	0.31	1.50	1.46	2.99	2.91	3.24	3.17	
4	140	117	45	45	10	55	53,5	110	107	117,5	114,5	1,24
	5.51	4.61	1.77	1.77	0.39	2.17	2.11	4.33	4.21	4.63	4.51	
5	180	154	60	60	10	70	67,5	140	135	150	145	2,43
	7.09	6.06	2.36	2.36	0.39	2.76	2.66	5.51	5.31	5.91	5.71	
6	225	206	80	80	15	99	96	198	192	210,5	204,5	6,12
	8.86	8.11	3.15	3.15	0.59	3.90	3.78	7.80	7.56	8.29	8.05	
7	270	251	90	90	15	115	112	230	224	245	239	8,69
	10.63	9.88	3.54	3.54	0.59	4.53	4.41	9.06	8.82	9.65	9.41	
8	340	320	120	120	25	160	157	320	314	333,7	327,7	22,49
	13.39	12.60	4.72	4.72	0.98	6.30	6.18	12.60	12.36	13.14	12.90	
9	520	470	160	162	30	235	-	470	-	488,7	-	51,23
	20.47	18.50	6.30	6.38	1.18	9.25	-	18.50	-	19.24	-	
10	680	630	180	182	30	295	-	590	-	608,7	-	74,38
	26.77	24.80	7.09	7.17	1.18	11.61	-	23.23	-	23.96	-	

The weight was determined with the smallest diameter (see catalogue) and the standard model of the steel parts of the respective quantity in bulk.

dimensions  $\frac{\text{mm}}{\text{Inch}}$