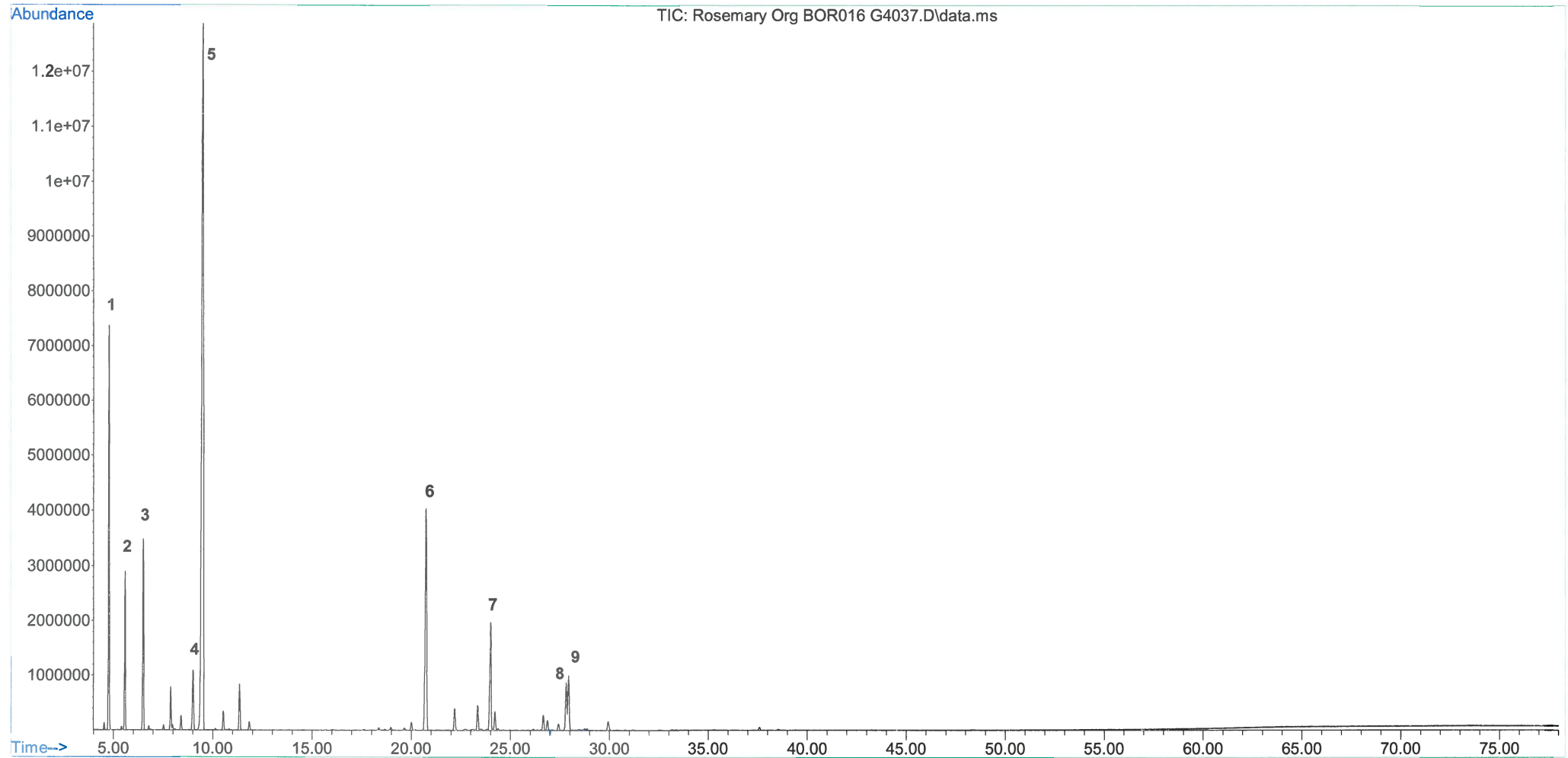


File :C:\msdchem\1\data\July 2018\Rosemary Org BOR016 G4037.D
Operator :
Acquired : 31 Jul 2018 15:31 using AcqMethod EOD.M
Instrument : GCMS
Sample Name: Rosemary Org BOR016 G4037
Misc Info :
Vial Number: 3





the power
of nature!

Absolute Aromas Limited
1 Absolute House, Mill Lane
Alton, Hampshire, GU34 2PX
United Kingdom
Phone: +44 (0) 1420 540400
Fax: +44 (0) 1420 540401
Email: relax@absolute-aromas.com
Web: www.absolute-aromas.com

Rosemary Organic BOR016 G4037

Rosmarinus officinalis

31/07/2018

Peak	R.T.	First	Max	Last	PK TY	Height	Area	Percent	ID
1	4.77	126	147	204	VV	7381887	209026280	10.913	α -pinene
2	5.581	283	299	333	VV	2889144	86137161	4.497	camphene
3	6.497	449	470	509	PV	3475085	114740787	5.991	β -pinene
4	9.007	914	940	969	VV 3	1090022	46091012	2.406	limonene
5	9.505	969	1033	1101	VV 2	12863189	833252271	43.504	eucalyptol
6	20.742	3098	3134	3167	PV 4	4037999	214183432	11.183	camphor
7	23.997	3716	3742	3762	VV 3	1956979	92361060	4.822	β -caryophyllene
8	27.812	4414	4455	4466	VV 2	858266	39949592	2.086	α -terpineol
9	27.933	4466	4478	4505	VV	981792	47275729	2.468	borneol

Instrumentation: Agilent GC-MS, DB-WAX 30m/0.25mm/0.25 μ m, He

Minor constituents:	12.13	%
Total constituents:	100	%

Craig Jones
QC GC-MS Analyst

