



Absolute Aromas Ltd.
Alton, Hampshire, UK.
GU34 2QL

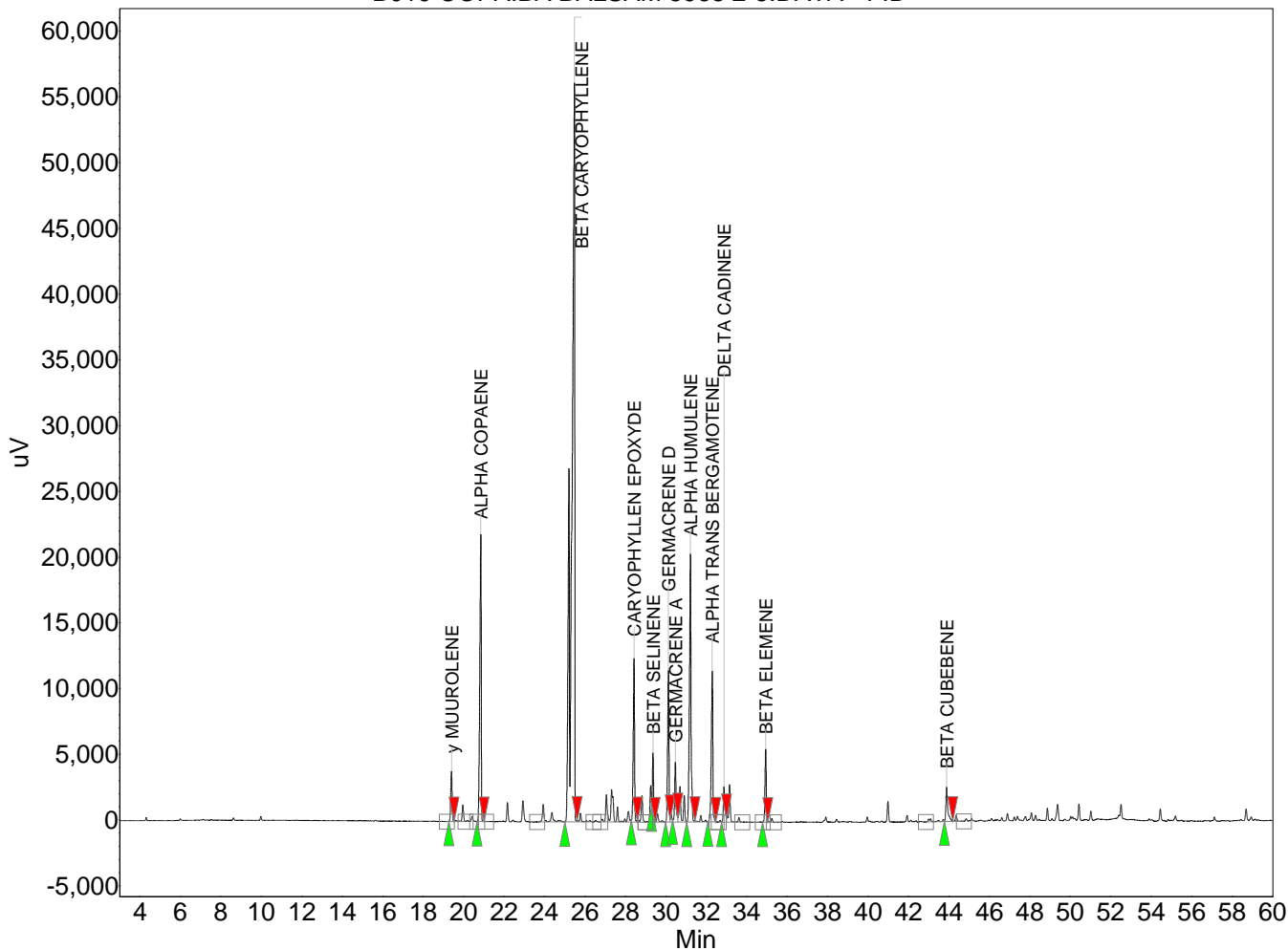
lab@absolute-aromas.com
www.absolute-aromas.com

Analysis : B019 COPAIBA BALSAM 5968 2-5

Instrument : Varian 430-GC
Method : Method 1
User : Chris Payne

Acquired : 18/07/2013 12:08:10
Processed : 22/07/2013 09:09:13
Printed : 22/07/2013 09:11:51

B019 COPAIBA BALSAM 5968 2-5.DATA - FID



Peak results :

Index	Name	Time [Min]	Area [uV.Min]	Height [uV]	Area % [%]
1	γ MUUROLENE	19.40	297.7	3828.9	1.588
2	ALPHA COPAENE	20.85	1817.9	21855.8	9.695
3	BETA CARYOPHYLLENE	25.48	9564.1	56208.9	51.007
4	CARYOPHYLLEN EPOXYDE	28.43	949.3	12465.7	5.063
5	BETA SELINENE	29.36	376.7	5264.6	2.009
6	GERMACRENE D	30.13	906.7	11519.9	4.836
7	GERMACRENE A	30.47	374.7	4569.2	1.998
8	ALPHA HUMULENE	31.22	1858.1	20376.5	9.910
9	ALPHA TRANS BERGAMOTENE	32.29	1004.7	11466.1	5.358
10	DELTA CADINENE	32.88	238.2	2705.8	1.270
11	BETA ELEMENE	34.94	413.7	5561.0	2.206
12	BETA CUBEBENE	43.88	280.6	2631.0	1.497
13	BETA BISABOLENE	65.03	668.2	4385.3	3.564
Total			18750.5	162838.8	100.000