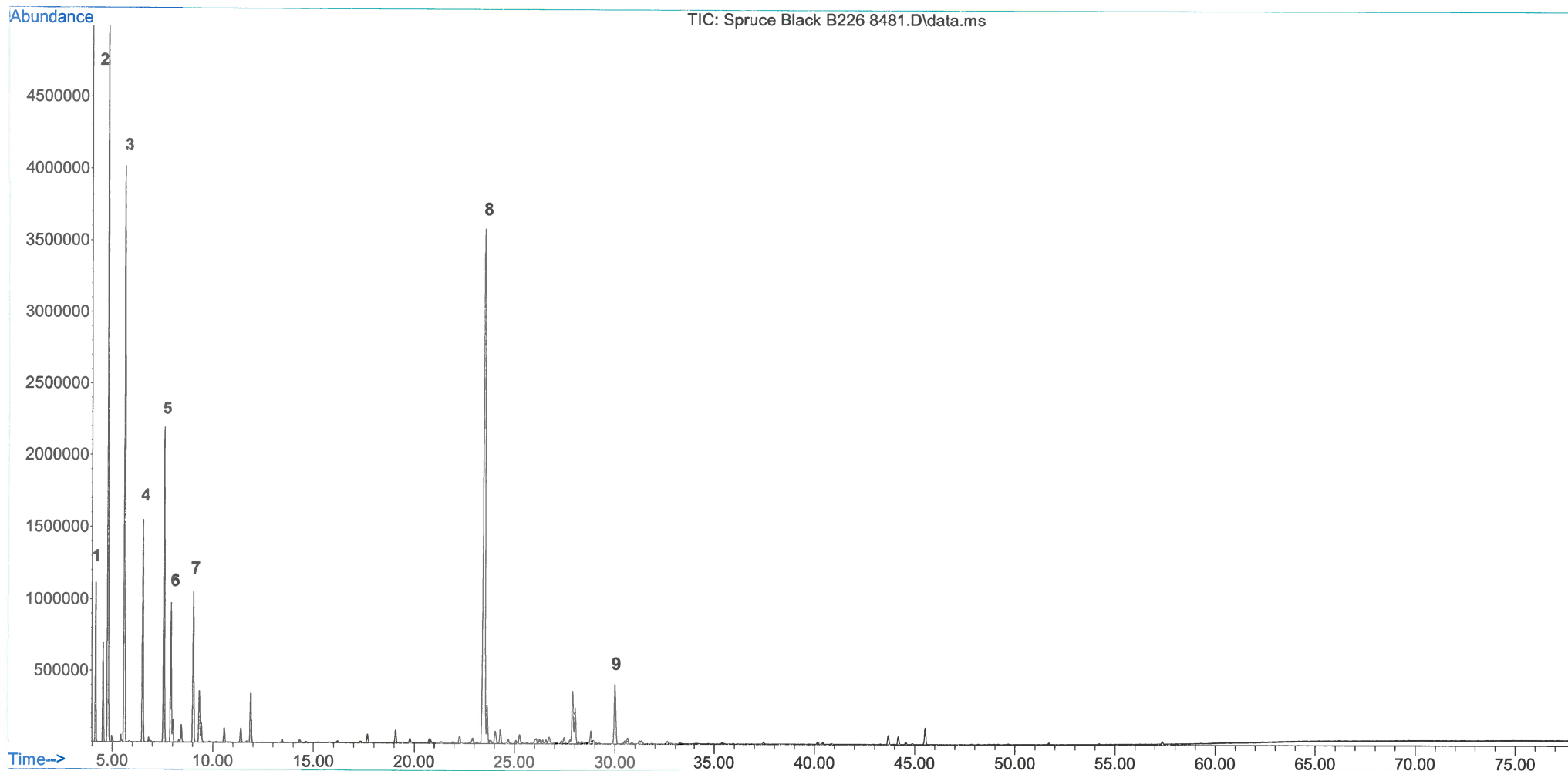


File : C:\msdchem\1\data\June 2018\Spruce Black B226 8481.D
Operator :
Acquired : 15 Jun 2018 19:19 using AcqMethod E0D.M
Instrument : GCMS
Sample Name: Spruce Black B226 8481
Misc Info :
Vial Number: 6





the power
of nature!

Absolute Aromas Limited
1 Absolute House, Mill Lane
Alton, Hampshire, GU34 2PX
United Kingdom
Phone: +44 (0) 1420 540400
Fax: +44 (0) 1420 540401
Email: relax@absolute-aromas.com
Web: www.absolute-aromas.com

Spruce Black B226 8481

Picea mariana

15/06/2018

| Peak | R.T. | First | Max | Last | PK TY | Height | Area | Percent | ID |
|------|--------|-------|------|------|-------|---------|-----------|---------|--------------------|
| 1 | 4.177 | 18 | 37 | 57 | BV | 1114101 | 27116616 | 2.818 | santene |
| 2 | 4.794 | 124 | 152 | 171 | PV | 4907004 | 149615483 | 15.55 | α -pinene |
| 3 | 5.621 | 286 | 307 | 339 | VV | 3982667 | 134372965 | 13.966 | camphene |
| 4 | 6.523 | 456 | 475 | 499 | BB | 1545126 | 50719764 | 5.272 | β -pinene |
| 5 | 7.582 | 610 | 673 | 714 | PV | 2193506 | 79420212 | 8.254 | δ -3-carene |
| 6 | 7.926 | 714 | 737 | 748 | VV | 965353 | 32237318 | 3.351 | myrcene |
| 7 | 9.037 | 873 | 945 | 978 | VV 4 | 1045153 | 38483901 | 4.000 | limonene |
| 8 | 23.52 | 3607 | 3653 | 3667 | PV 2 | 3610899 | 230328818 | 23.939 | bornyl acetate |
| 9 | 29.999 | 4835 | 4864 | 4895 | BV 7 | 412682 | 23227734 | 2.414 | δ -cadinene |

Instrumentation: Agilent GC-MS, DB-WAX 30m/0.25mm/0.25 μ m, He

| | | |
|---------------------|-------|---|
| Minor constituents: | 20.44 | % |
| Total constituents: | 100 | % |

Craig Jones
QC GC-MS Analyst

