

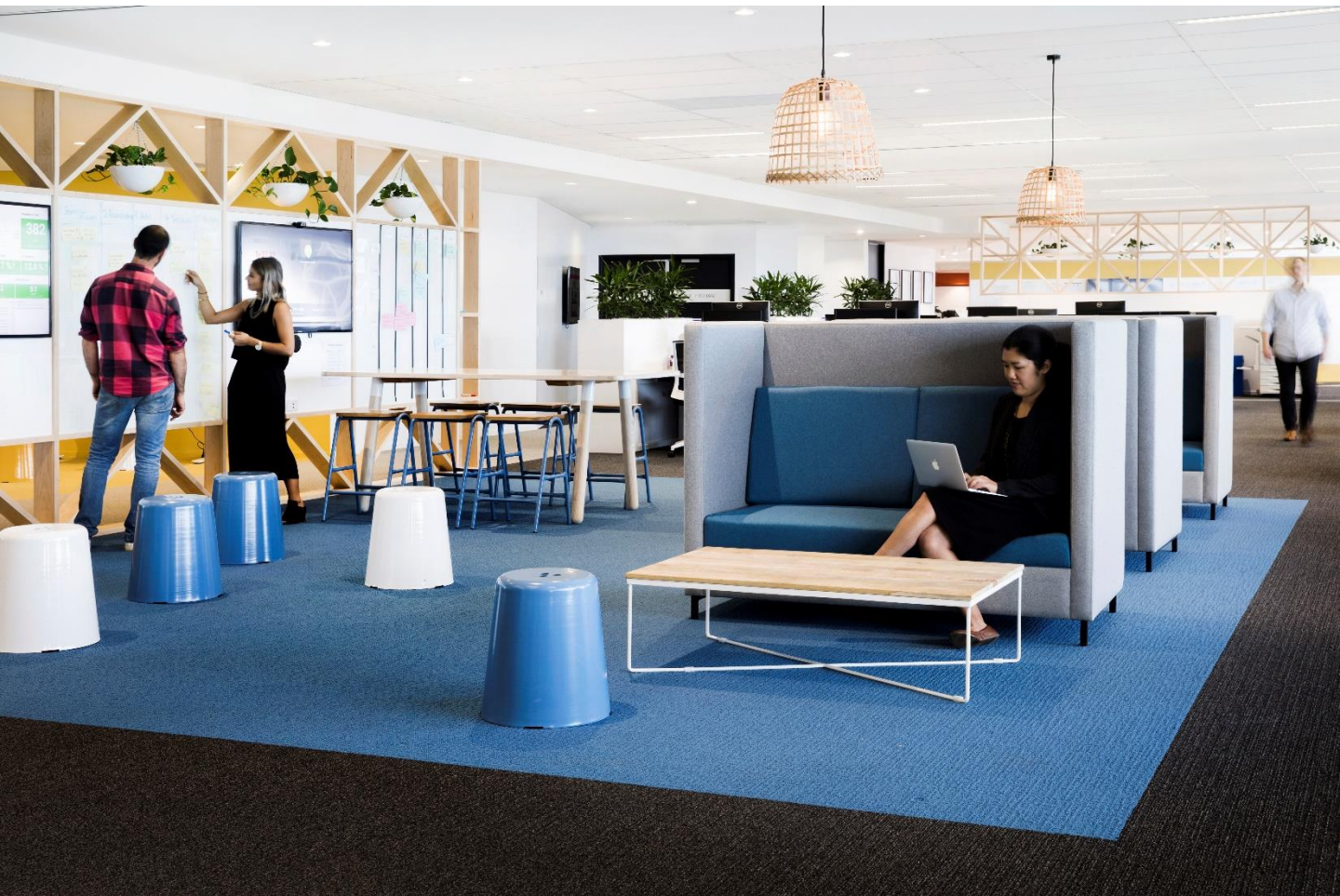
Pimp My Office

www.pimpmyoffice.com.au

ACOUSIT

Design:2018

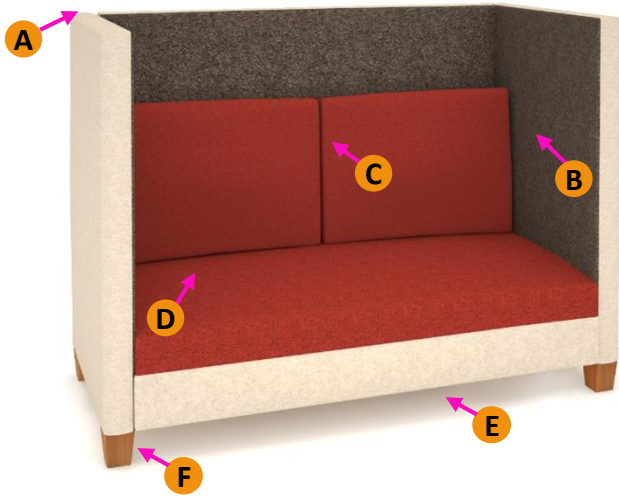
Application
Meeting
Collaborative
Breakout



"Alone or together with a colleague, a client or friend, Acousit offers a perfect environment to carry out meetings"



Ideal for collaborative and activity based work places the Acousit allows the user to immerse oneself in total comfort, concentration and security within an open public space. Made utilising only high quality materials the Acousit is locally made and available to be fabric panel customised to suit individual needs.



A – High back for privacy

B – Acoustic external frame

C – Soft back cushions

D – Fixed seat cushion for commercial use

E – Elevated base

F – 4 leg 25 x 25mm metal tube in Black Epoxy powder coat or optional Solid wood finished in Walnut or Old English stain



AS1 - Single

Dimensions Overall : 81cm W x 81cm D x 120cm H
 Seat Depth: 53cm
 Seat Height: 43cm
 Back cushion: 45cm H



AS2 - Double

Dimensions Overall : 160cm W x 81cm D x 120cm H
 Seat Depth: 53cm
 Seat Height: 43cm
 Back cushion: 45cm H



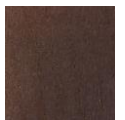
AS3 - Three seat

Dimensions Overall : 210cm W x 81cm D x 120cm H
 Seat Depth: 53cm
 Seat Height: 43cm
 Back cushion: 45cm H

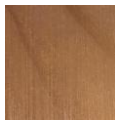
Leg finish:



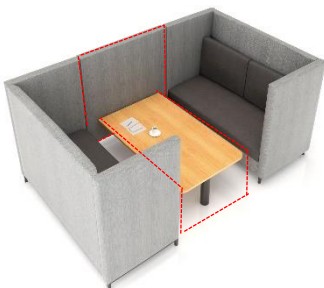
25mm x 25mm tube
 Black epoxy
 Powder coat



Solid timber
 Walnut stain



Solid timber
 Old English stain



ACOUSIT BOOTH

AS SCREEN :

(Connects to 2 x AS1,2,3)

1200mm Wide section

AS TABLE :

(STD White melamine,
 rounded corners and round post leg in Black)

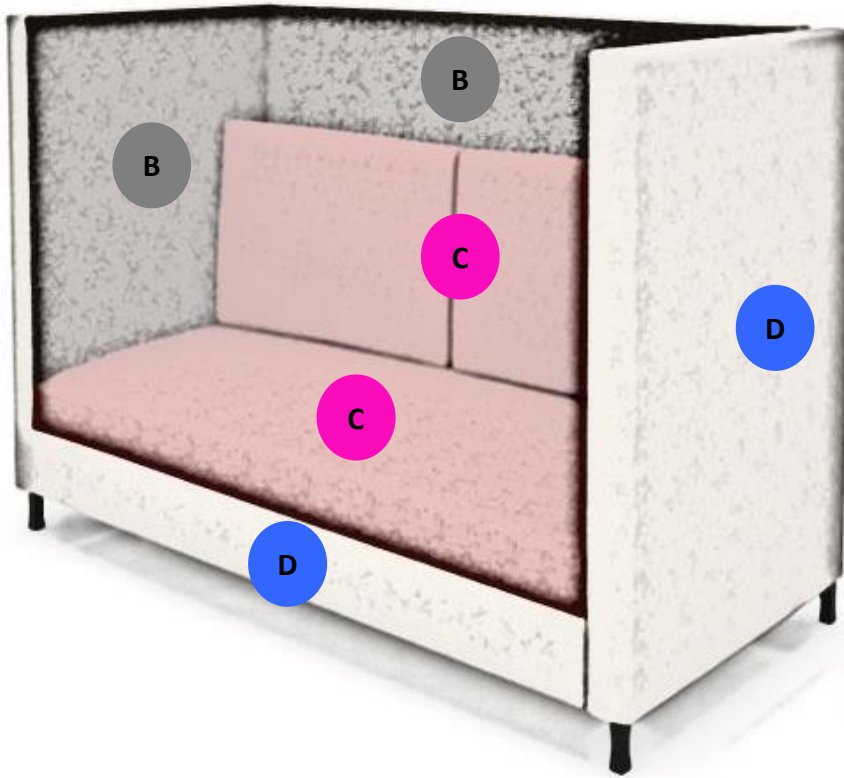
2 person (For AS1)

4 person (For AS2)

6 person (For AS3)

ACOUSIT

Upholstery specification



Area	Upholstery selected
ALL	
B (Internal panels)	
C (seat and back cushions)	
D (bottom plinth and external panels)	
(Optional AS-SCREEN)	Inside face _____ Outside face _____ (boarder matches outside face)
F (Feet x 4)	*STD Black epoxy 25mm x 25mm tube ____ (tick) optional Wood legs in : WALNUT ____ (tick) or OLD ENGLISH ____ (tick)

PO/JOB/ITEM # or
Remark:

.....