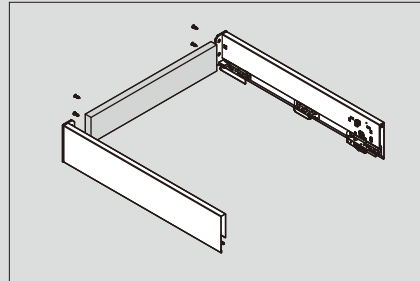
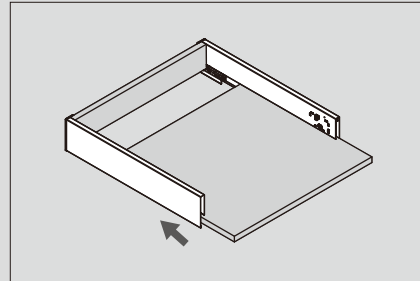


# Assembly and Adjustment Vicenzo Nero Black Series Double Wall Soft-closing System-30kg

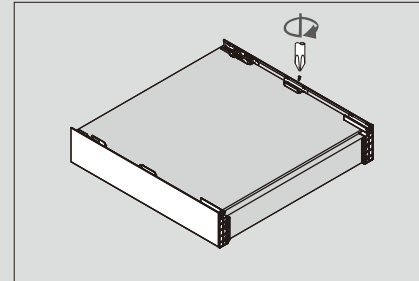
## Drawer Assembly



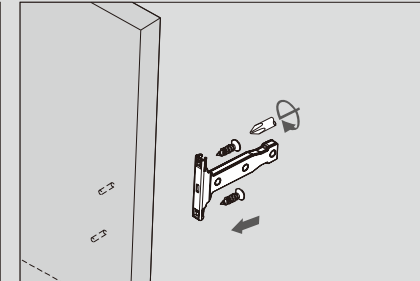
Back assembly



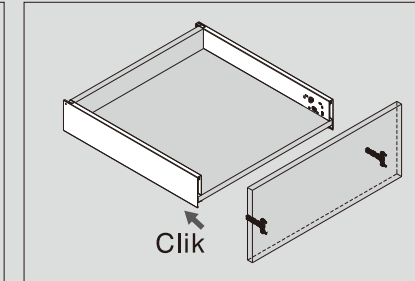
Bottom assembly



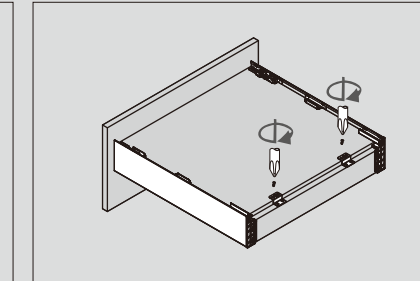
Fix screws



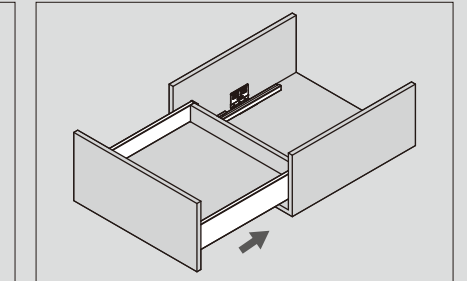
Front assembly



Clik



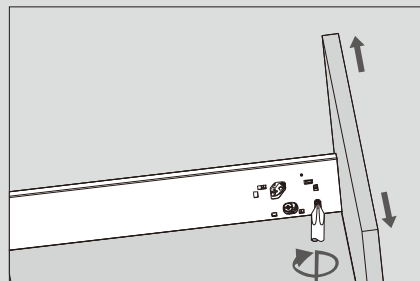
Fixing-brackets assembly



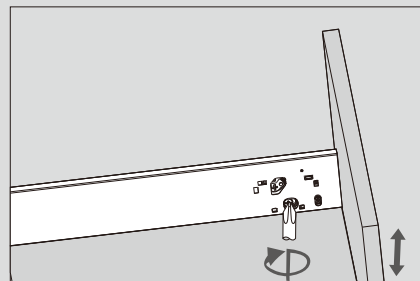
Slide into the cabinet

## Adjustments for Lower/Medium Drawer

V1/V2



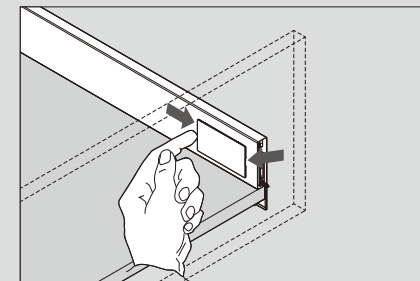
Left&right adjustment



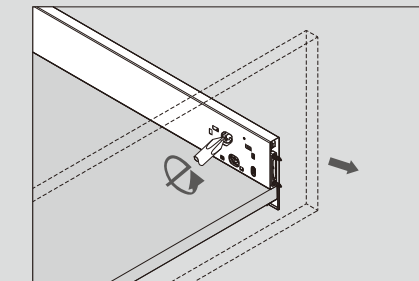
Up&down adjustment

## Removal for Lower/Medium Drawer

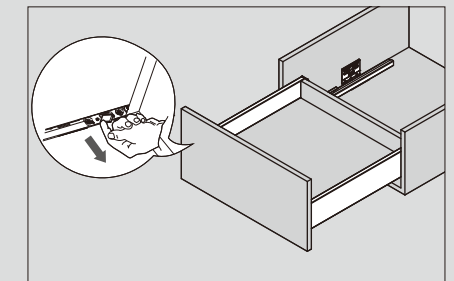
V1/V2



Tip up the cover and pull out



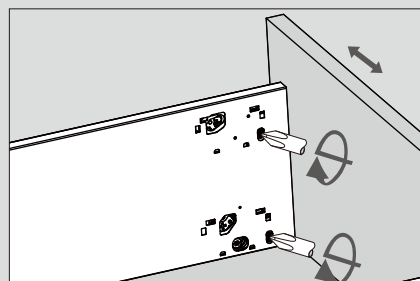
Turn screw driver to release the drawer front



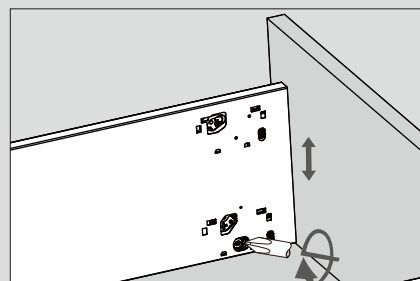
Press the locking device under drawer bottom and pull out the drawer

## Adjustments for High/Super high Drawer

V3



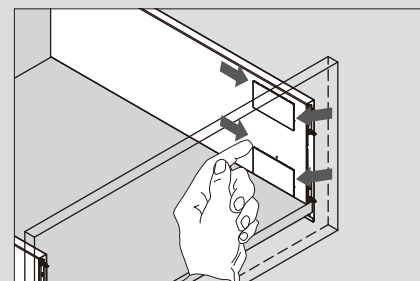
Left&right adjustment



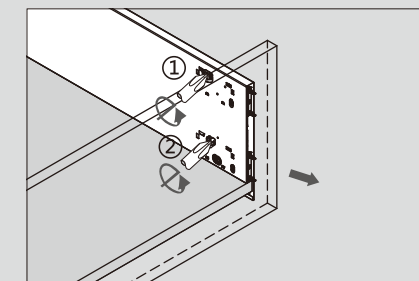
Up&down adjustment

## Removal for High Drawer

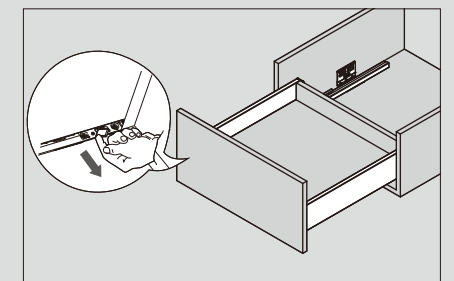
V3



Tip up the cover and pull out



Turn screw driver to release the drawer front



Press the locking device under drawer bottom and pull out the drawer

