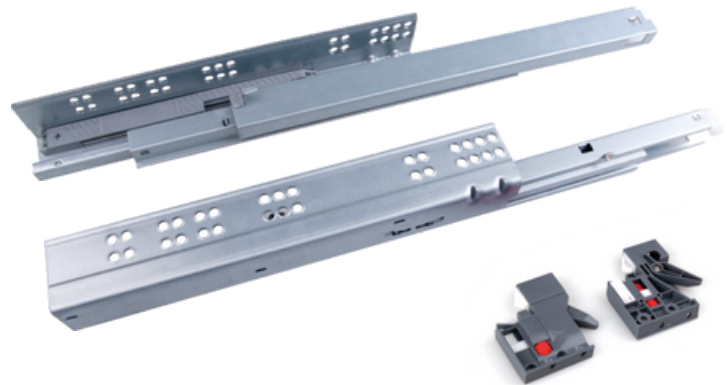


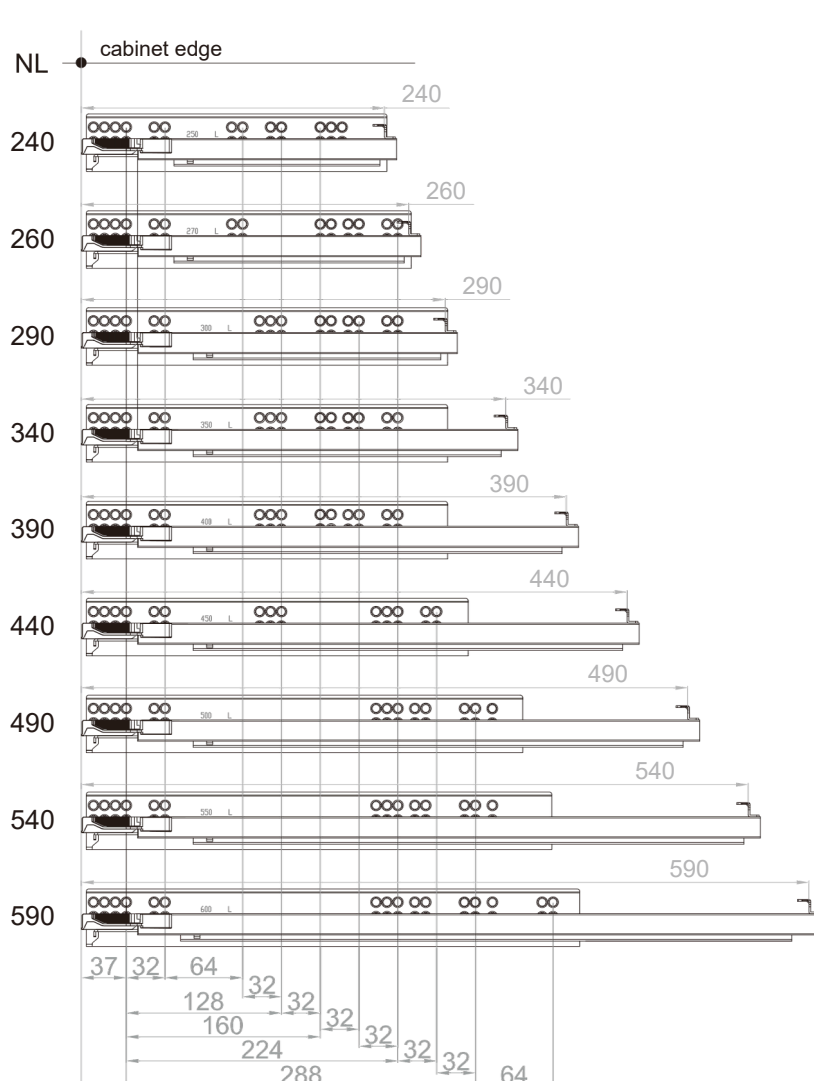
3-Fold **soft-closing** concealed drawer slide(with handle)

Technical specifications:

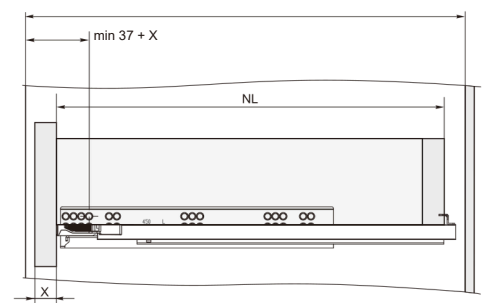
- Main material: zinc plated board.
- Max loading capacity: 30kg.
- Life guarantee: 50,000 cycles.
- Thickness of board: EPS-ELKY-E707: ≤16mm
- Full extension, slide-click front fixing device, easy height adjustment.
- Outstanding sliding stability.
- Easy and safe mounting and dismounting for drawers.
- Synchronized concealed slide need to be requested separately.
- Opening and closing strength can be adjusted with eccentric screw on the damper.
- EPS-ELKY-E707 bear the synchronized system function.



Installation dimensions

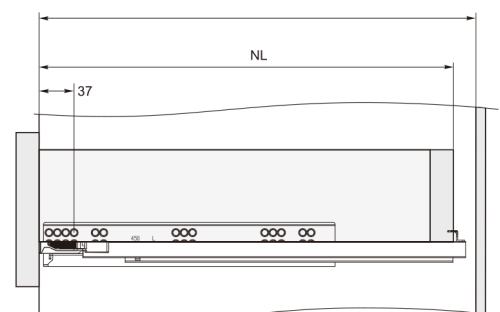


$$LT_{min} = NL + X + 13$$



Built-in drawer

$$LT_{min} = NL + 13$$

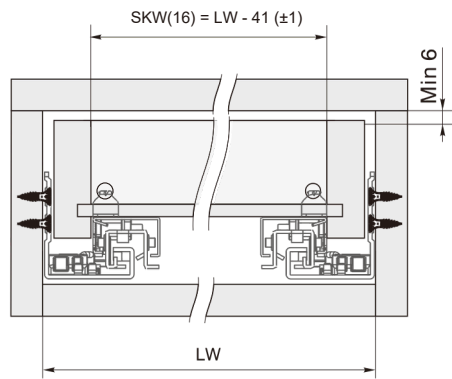


Standard drawer

LT - Cabinet inner depth

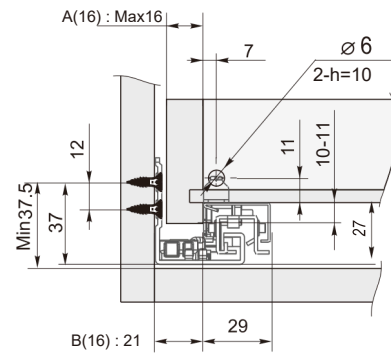
NL - nominal slide length

3-Fold **soft-closing** concealed drawer slide(with handle)



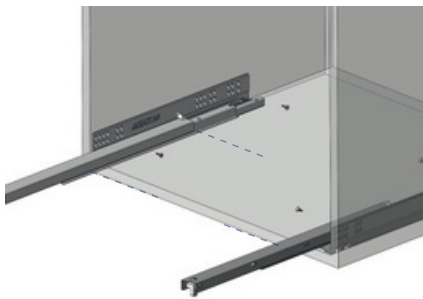
LW - Cabinet inner width

SKW(16) -Drawer inner width(≤ 16 mm drawer side thickness)

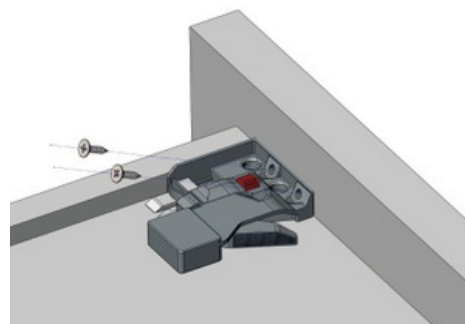


A(16) Be used for slide rails with a drawer side thickness no greater than 16mm.
B(16)

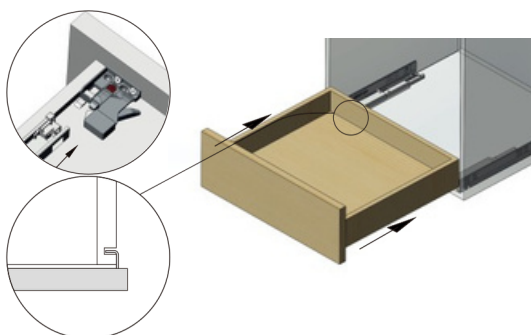
1. Install the slides on the cabinet



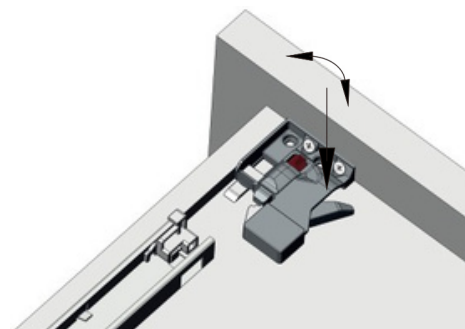
2. Install left/ right handle in the front of the drawer



3. Install the drawer on the slides, slide hooks insert into the pre-drilled holes on the drawer back panel



4. Adjust the front panel with plastic wheel on the handle, 0-2.5mm



5. Push the handle lever to unlock the drawer, then pull out the drawer

