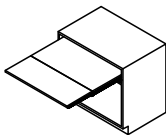


COCKTAIL

ISTRUZIONI DI MONTAGGIO ASSEMBLY INSTRUCTIONS

MODELLI
 MODELS:

- 411/78.1155.22E - COCKTAIL 450
- 411/78.1150.22E - COCKTAIL 600
- 411/78.1160.22E - COCKTAIL 900
- 411/78.1170.22E - COCKTAIL 1200



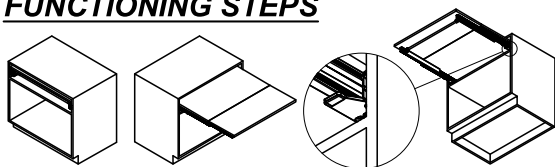
CONTENUTO DELLA CONFEZIONE INCLUDED IN THE PACKAGING

- GUIDE - SLIDES
- MANIGLIA - HANDLE

SACCHETTO ACCESSORI - ACCESSORIES

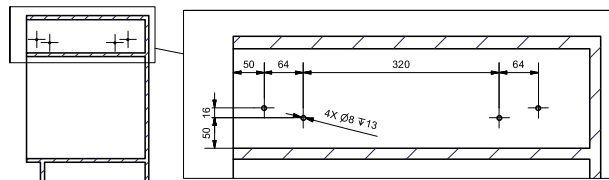
- A. Chiave esa. da 4 - n° 4 Allen key (x 1)
- B. Chiave esa. da 5 - n° 5 Allen key (x 1)
- C. Bussola M6 - Bush M6 (x 12)
- D. Vite TCCE M6x12 - M6x12 SHCS (x 8)
- E. Vite TCCE M6x60 - M6x60 SHCS (x 4)

SEQUENZA DI FUNZIONAMENTO FUNCTIONING STEPS

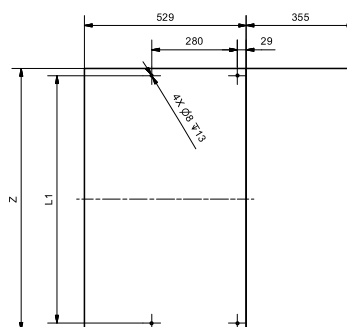


PER CHIUDERE IL MECCANISMO SPINGERE LE DUE LEVE ROSSE
 TO CLOSE THE MECHANISM PUSH THE TWO RED LEVERS

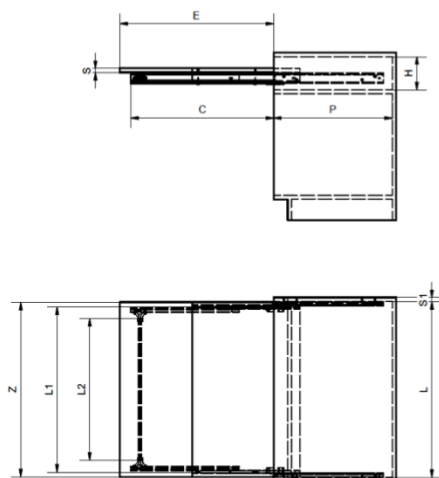
FORI FISSAGGIO MECCANISMO HOLES FOR MECHANISM



DIMENSIONI PIANI TOPS SIZE



DIMENSIONI GENERALI
GENERAL SIZES



DIMENSIONE - DIMENSION	SIMBOLO - SYMBOL	mm
ALTEZZA - HEIGHT	H	MIN 120
PROFONDITA' - DEPTH	P	MIN 540
LARGHEZZA - WIDTH	L	MAX 1170
SPESSORI PIANI - TOP THICKNESS	S	MIN 16
SPESSORI SPALLE - SIDE THICKNESS	S1	15-20
LARGHEZZA PIANI - TOP WIDTH	Z	L - 5
APERTURA PIANI - TOP OPENING	E	753
INTERASSE FORI - DISTANCE BETWEEN HOLES	L1	L - 52
LUNGHEZZA MANIGLIA - HANDLE LENGTH	L2	L - 163

MONTAGGIO DEL MECCANISMO
MOUNTING OF THE MECHANISM

