

# Trail Status Resources

(updated January 2021)



Below is a list of resources that can help determine local trail conditions in the DMV area. Trail conditions can vary significantly depending on the trail system and local weather conditions.

## In Maryland:

Montgomery County operates a **trail status webpage** at:

<https://www.montgomeryparks.org/activities/park-trails/rainoutline-trails-operating-status/?fbclid=IwAR3jxwW2uWUI9kCOBZzCtShMNj3UAV2UTHscB-AuLOaJv30o2dplBk6SgI8>

At this website, real-time conditions for trails maintained by Montgomery County are updated regularly and up-to-date trail status are available for specific trail areas.

Conditions noted for these trails are usually indicative of conditions for other nearby trails in Montgomery County, so if these trails are closed, other nearby trails are effectively closed as well.

The MoCo rain out line also can be accessed using a mobile app or you can signup for email/text alerts:

<https://rainoutline.com/subscribe/notify/2402700008/0>

RED ALERTS: CLOSED | YELLOW ALERTS: OPEN, USE CAUTION | GREEN ALERTS: TRAIL OPEN



### HOYLES MILL TRAIL

Hoyles Mill Trail and Diabase Trail are closed tomorrow 1/2 for managed hunt operations.



### POWERLINE TRAIL

Natural surface trails closed due to inclement weather. Please call 301.495.2595 to report downed trees.



### UPPER ROCK CREEK TRAIL

Natural surface trails closed due to inclement weather. Please call 301.495.2595 to report downed trees.

## In Virginia:

A good resource in Virginia is the Fountainhead Facebook page and Park Hotline:

Fountainhead Park FB Page: <https://www.facebook.com/fountainheadregionalpark/>

Fountainhead Park Hotline: (703) 250-9124

Closures for Fountainhead Park usually apply to the BROT as well as other nearby trails in northern Virginia, such as Locust Shade, Wakefield and Lake Fairfax Park.

## Facebook Groups:

MORE's FB Page: <https://www.facebook.com/RideWithMORE>

We share general information as well as specific trail status' as we are notified, but for specific trails systems, your best bet is to see if they are on the list below ↴

### DC Area MTB Trail Conditions

Trail reports of the local DC, MD, VA trails and related discussion.

<https://www.facebook.com/groups/dcareaMTBtrailconditions>

### Maryland Trail Systems

#### Annapolis Waterworks Trails

<https://www.facebook.com/annapoliswaterworkstrail>

#### Bacon Ridge Trails

<https://www.facebook.com/baconridgetrail>

#### Frederick Watershed Trails

<https://www.facebook.com/FrederickWatershedTrails/>

#### River's Edge Trails

<https://www.facebook.com/Rivers-Edge-Trails-645576958881484>

#### South Germantown Bike Park

<https://www.facebook.com/search/top?q=south%20germantown%20bike%20park>

#### Patapsco Mountain Bikers

<https://www.facebook.com/groups/patapscomtb/>

#### Montgomery County - Seneca Area Trails

<https://www.facebook.com/groups/459965450770054/>

### Virginia Trail Systems

#### Fountainhead

<https://www.facebook.com/groups/FountainheadMTBTrailSupport>

#### Locust Shade Project

<https://www.facebook.com/LocustShade>

#### Lake Fairfax Park

<https://www.facebook.com/lakefairfaxpumptrack>

## Meadowood Special Recreation Area

<https://www.facebook.com/TheMeadowoodProject>

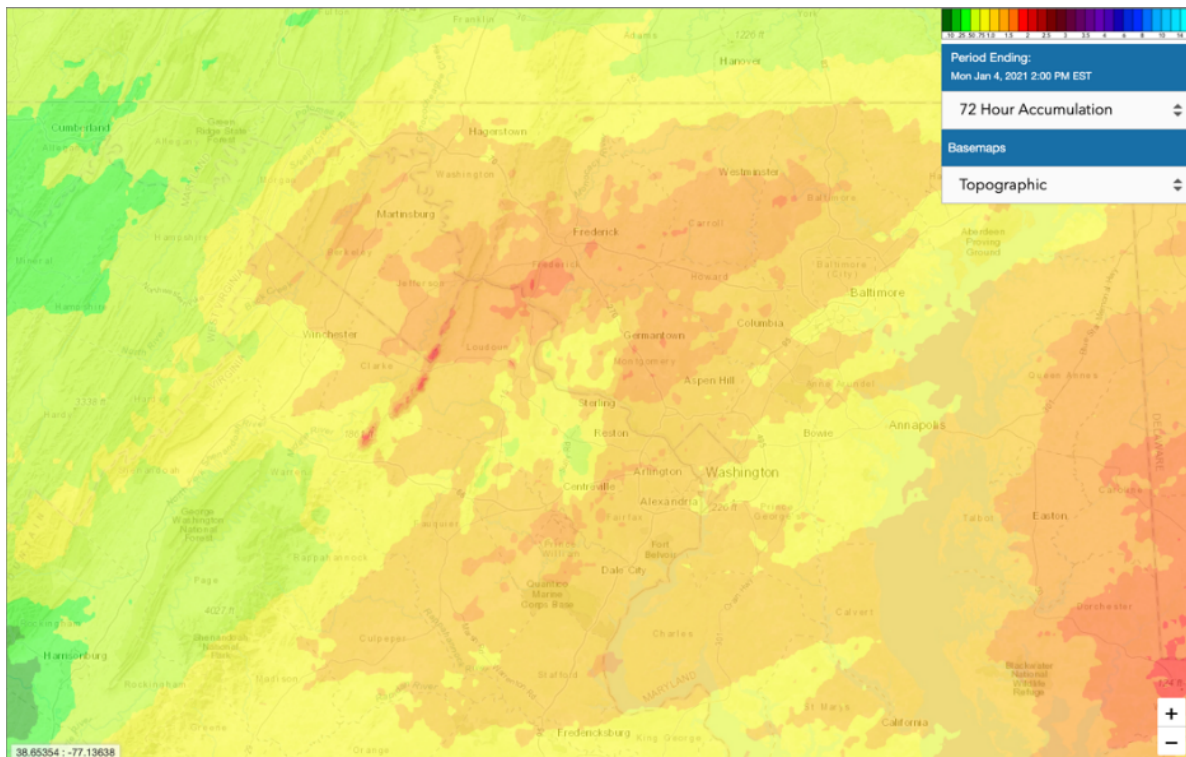
## Mount Vernon District Park

<https://www.facebook.com/MVDPtrails>

## Wakefield-Accotink Trails

<https://www.facebook.com/WakefieldAccotinkMTBTrails>

## Additional Resources:



### Precipitation over the last 1 to 72 hours:

A good resource to determine how much rain has fallen in your area can be found at the link below. Scroll down below the ads and the period of interest (from 1 hour to 72 hours accumulation) can be selected with the drop down on the map displayed. Typically, it takes at least a day for trails to dry out following a rain event, but it may be a lot longer in the winter and early spring season when the temperature is cooler and freeze-thaw is underway.

### Rainfall totals for the last 24 hours to 3 days – high resolution map

[https://www.iweather.net/total-rainfall-map-24-hours-to-72-hours?fbclid=IwAR2gv5Acr\\_9xZ5Q5sCDBN8vAFFC-wToSGot0sTsATqXjDtjCkf0jM\\_zw\\_9U](https://www.iweather.net/total-rainfall-map-24-hours-to-72-hours?fbclid=IwAR2gv5Acr_9xZ5Q5sCDBN8vAFFC-wToSGot0sTsATqXjDtjCkf0jM_zw_9U)