

A map of the Mid-Atlantic region of the United States, showing various trail territories and trails. The map is overlaid with a semi-transparent dark grey box containing text. The text includes the word 'MORE' in large white letters, followed by 'Mid-Atlantic Off-Road Enthusiasts' in white, and '2019 Liaison Vision' in white. A quote 'Riding Bikes and Building Trails since 1992' is also present. The map shows various trail territories such as Greenbluff, Frederick Watershed, Loch Raven, Gunpowder, Gwynns Falls, Leakin Park, Patapsco, Delaware Trail Spinners, Elizabeth Furnace Recreational Area, GWNF, Wakefield, Lake Account, Rockyville, Conway Robinson, Laurel Hill, Meadowood, Cosca, Locust Shade, Charlottesville AMBC, Fredericksburg Area Trail Management Group, Southern Maryland Mountain Biking, and Eastern Shore IMBA. A legend on the right side of the map shows a pink square for 'Trail Territory' and a black square for 'Trail'.

MORE

Mid-Atlantic Off-Road Enthusiasts

"Riding Bikes and Building Trails since 1992"

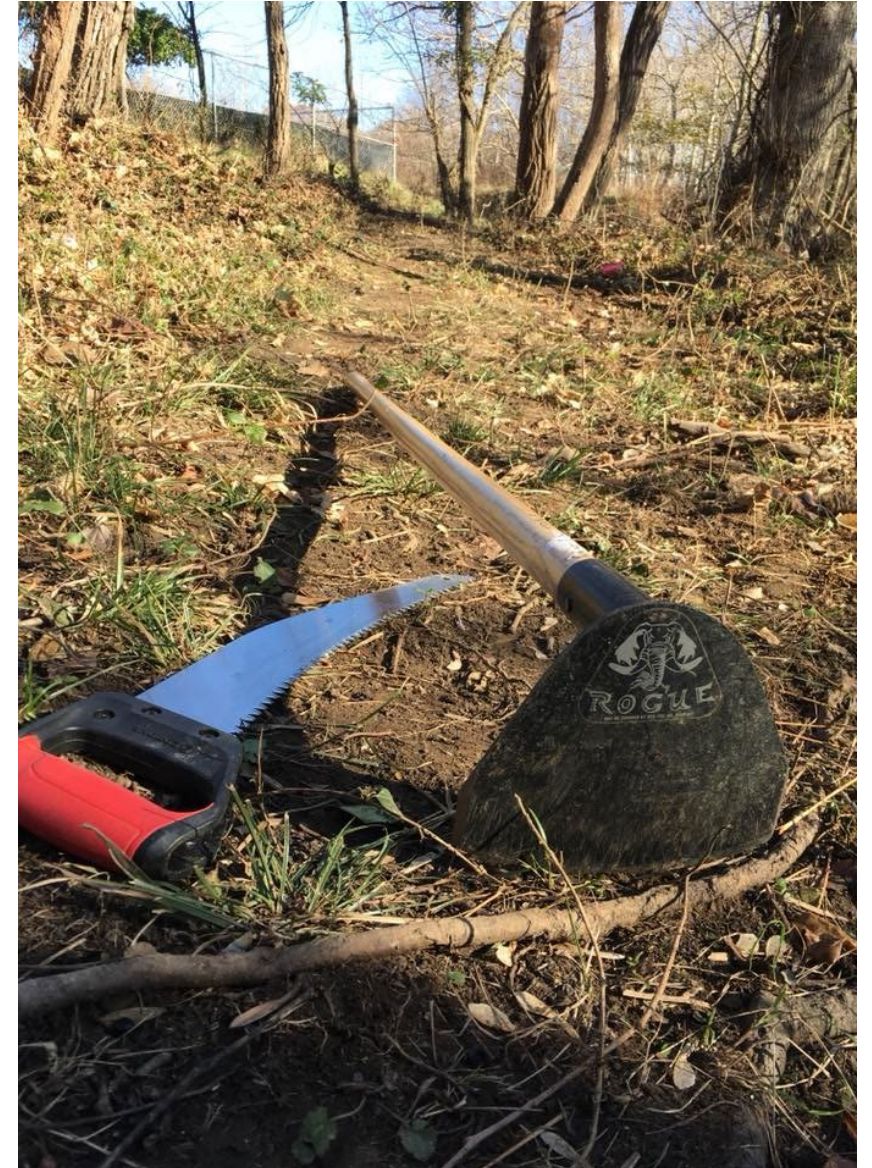
2019 Liaison Vision

Transforming Liaison Vision into Trails

Trail liaisons are the heart of MORE's volunteer organization creating a vision for the future of mountain biking in the Mid Atlantic.

MORE strives to enable and support volunteers build/maintain trails and lead rides by creating a welcoming and inclusive mountain biking community, sustainable natural surface multi-use trails and programs for women and kids of all ages.

2019 Major Initiatives



Transforming Liaison Vision into Trails

Frederick Watershed – Frederick MD

Add 5 miles of new, bike optimized trails in the southern portion of the Frederick Watershed by a combination of professional contractors and volunteers

Project Cost	\$120,000
Current funds	\$49,353
Shortfall	\$70,647



Transforming Liaison Vision into Trails

Patapsco Valley State Park - MD

Connect Baltimore and Howard Counties with a bridge, signage and 1.5 mile trail between Garretts Pass and Ilchester Road. Bloede's Trail will provide a vital alignment and connection to the Bloede Dam overlook being built as part of the American Rivers and Streams Bloede Dam removal project.

The Patapsco Army will also focus on completion of the Ole Ranger trail and constructing several bridges on existing trails.

Project Cost	\$50,000
Current funds	\$2,500
Shortfall	\$47,500



Transforming Liaison Vision into Trails

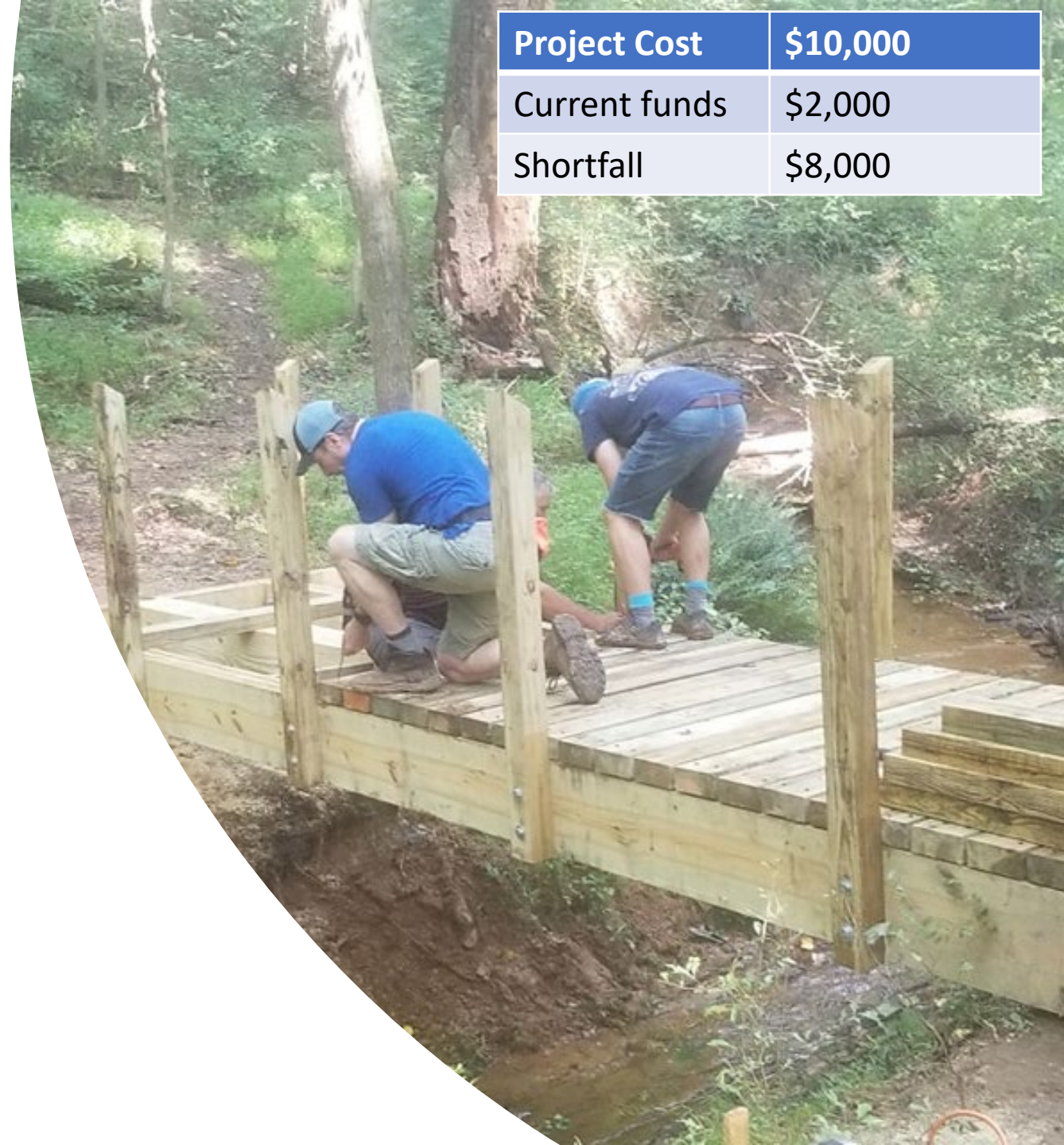
Montgomery County MD

In Montgomery County in 2019, we are looking to build about 1/2 mile of machine built trail on a steep hillside to complete the new 12 mile Pepco/SRT/Greenway loop near Schaeffer Farm. Cost will be near \$10k including a new bridge.

We hope to start construction on 10+ miles of new trail in Patuxent River State Park, which straddles Montgomery and Howard counties,

We will also continue to support the extensive construction of new trail by the Montgomery Parks professional trail-building crew in county parks with volunteer hand-built finish work.

Project Cost	\$10,000
Current funds	\$2,000
Shortfall	\$8,000

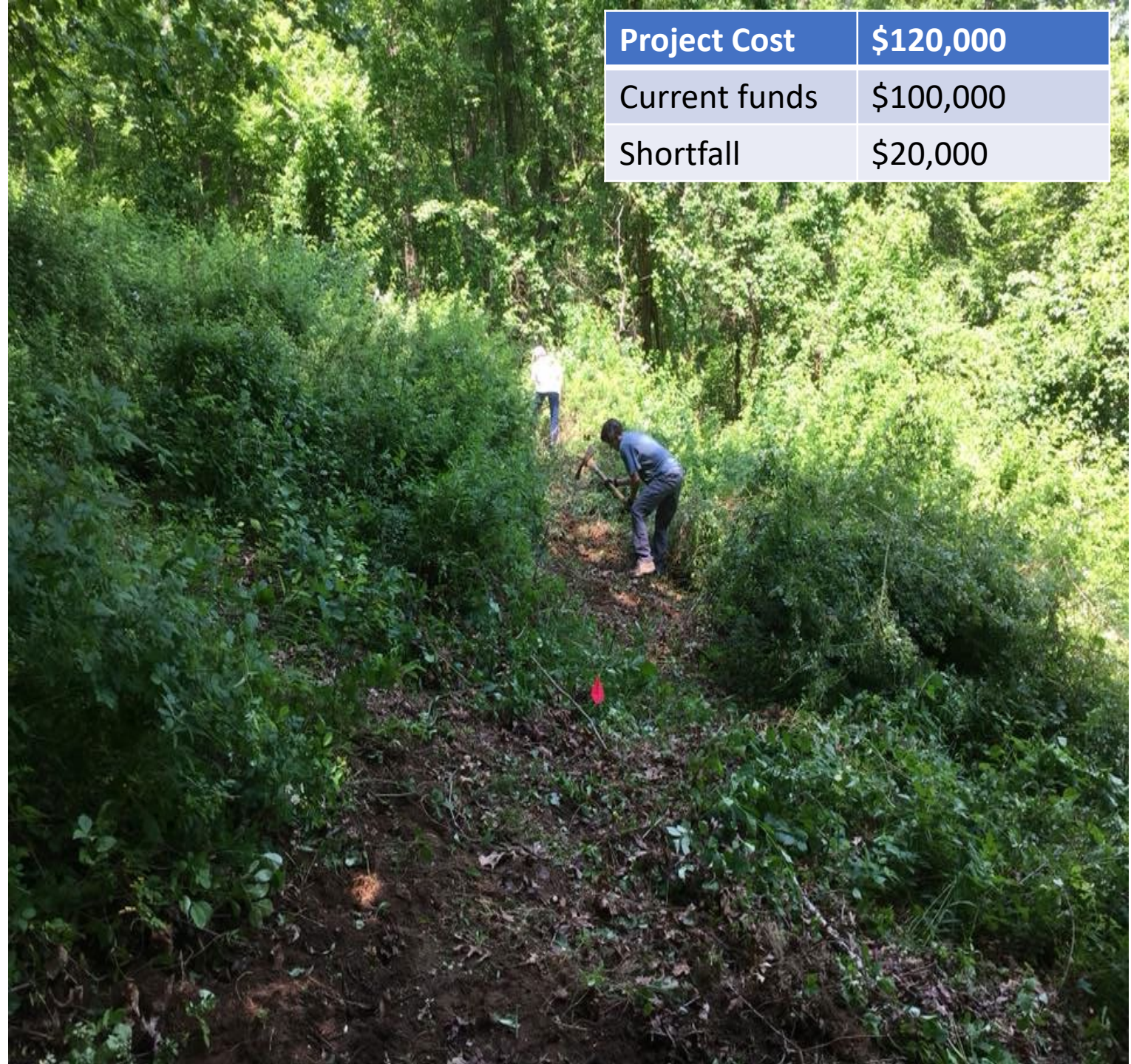



Transforming Liaison Vision into Trails

Patuxent – Howard & Montgomery Counties MD

Build 25 to 30 miles of new sustainable natural
surface multi-use trails within Patuxent River
State Park

Project Cost	\$120,000
Current funds	\$100,000
Shortfall	\$20,000





Transforming Liaison Vision into Trails

Rivers Edge – Brunswick MD

Build and maintain welcoming natural surface terrain for all users from beginner to experts with an inclusive community close to the C&O canal, Potomac River, Appalachian Trail and camping at Brunswick Family Campground

Maryland Interscholastic Cycling League destination

Project Cost	\$28,000
Current funds	\$3,000
Shortfall	\$25,000


Transforming Liaison Vision into Trails

Bacon Ridge – Crownsville MD

We are looking to build the largest greenway and natural surface trail system in Maryland. We are working with the City of Annapolis to become southern terminus at Waterworks Park. Heading north would connect to Crownsville Mental Hospital (soon to be county property), Bacon Ridge, Arden Park, Severn Run Natural Environment Area (DNR) then some BWI bike trail to the southern end of Patapsco then head north.

Project Cost	\$60,000
Current funds	\$6,395
Shortfall	\$53,605





Transforming Liaison Vision into Trails

Rosaryville – Upper Marlboro MD

Mitigate perpetually wet areas and stream crossings with environmentally friendly and sustainable pavers.

Project Cost	\$2,000
Current funds	\$500
Shortfall	\$1,500

Transforming Liaison Vision into Trails

Gillis Falls – Mount Airy, MD

2019 Vision: Reroute unsustainable sections of existing trail out of low lying areas. Develop a plan for new trail in the northern and western areas of the park. Raise awareness of the park in the region.



Project Cost	\$3,000
Current funds	\$500
Shortfall	\$2,500

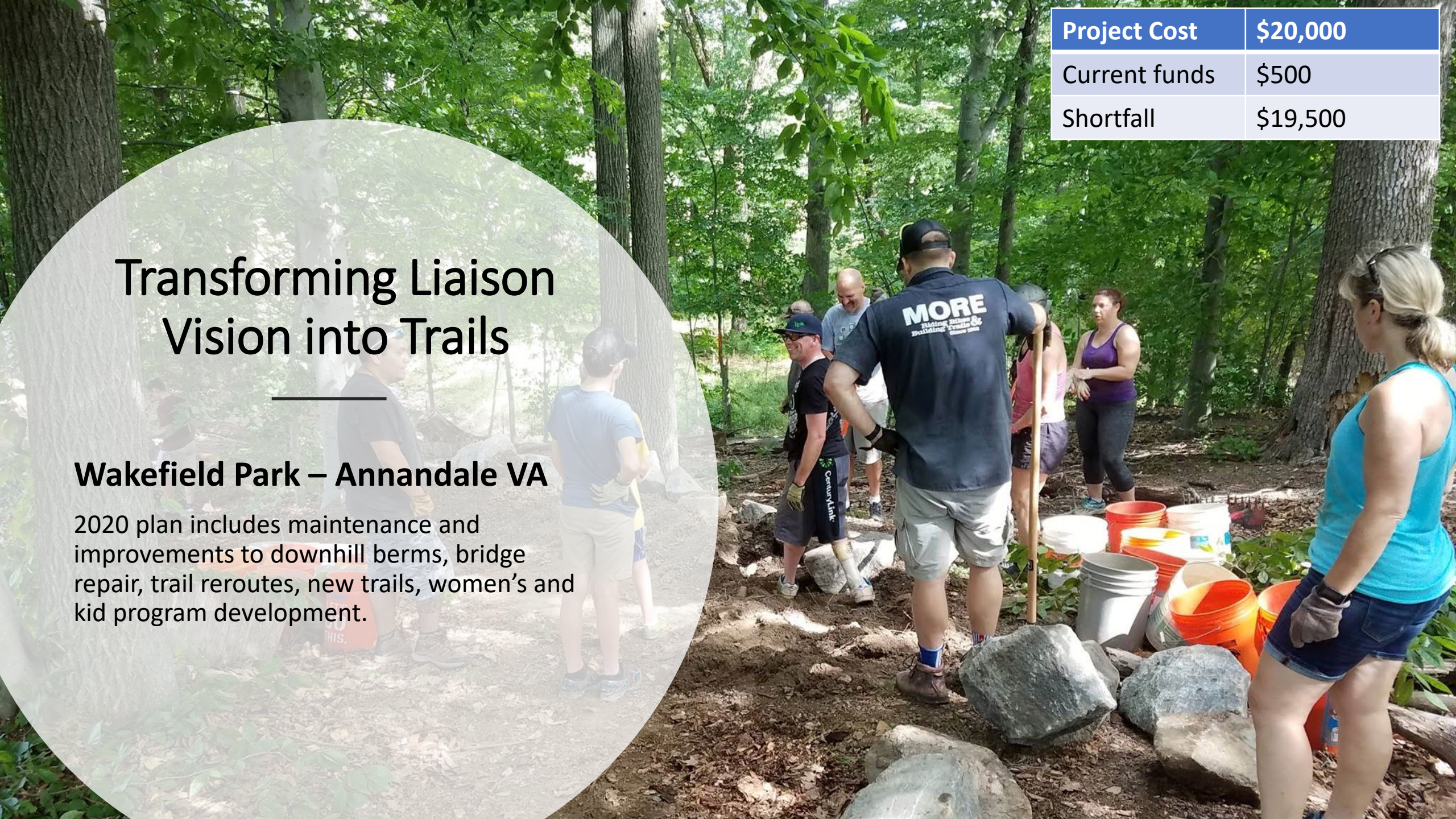


Transforming Liaison Vision into Trails

Wakefield Park – Annandale VA

2020 plan includes maintenance and improvements to downhill berms, bridge repair, trail reroutes, new trails, women's and kid program development.

Project Cost	\$20,000
Current funds	\$500
Shortfall	\$19,500



Transforming Liaison Vision into Trails

Bull Run Occoquan Trail – Fairfax VA

The focus of the project is to rehabilitate unsustainable trail along the Occoquan with trail reroutes to improve sustainability and erosion issues between Fountainhead Regional Park and Bull Run Marina.



Transforming Liaison Vision into Trails

Laurel Hill – Lorton VA

Plans to build a connector trail between the Power Station Loop and the Dairy Barn Trail including an armored creek crossing

Project Cost	\$2,000
Current funds	\$500
Shortfall	\$1,500

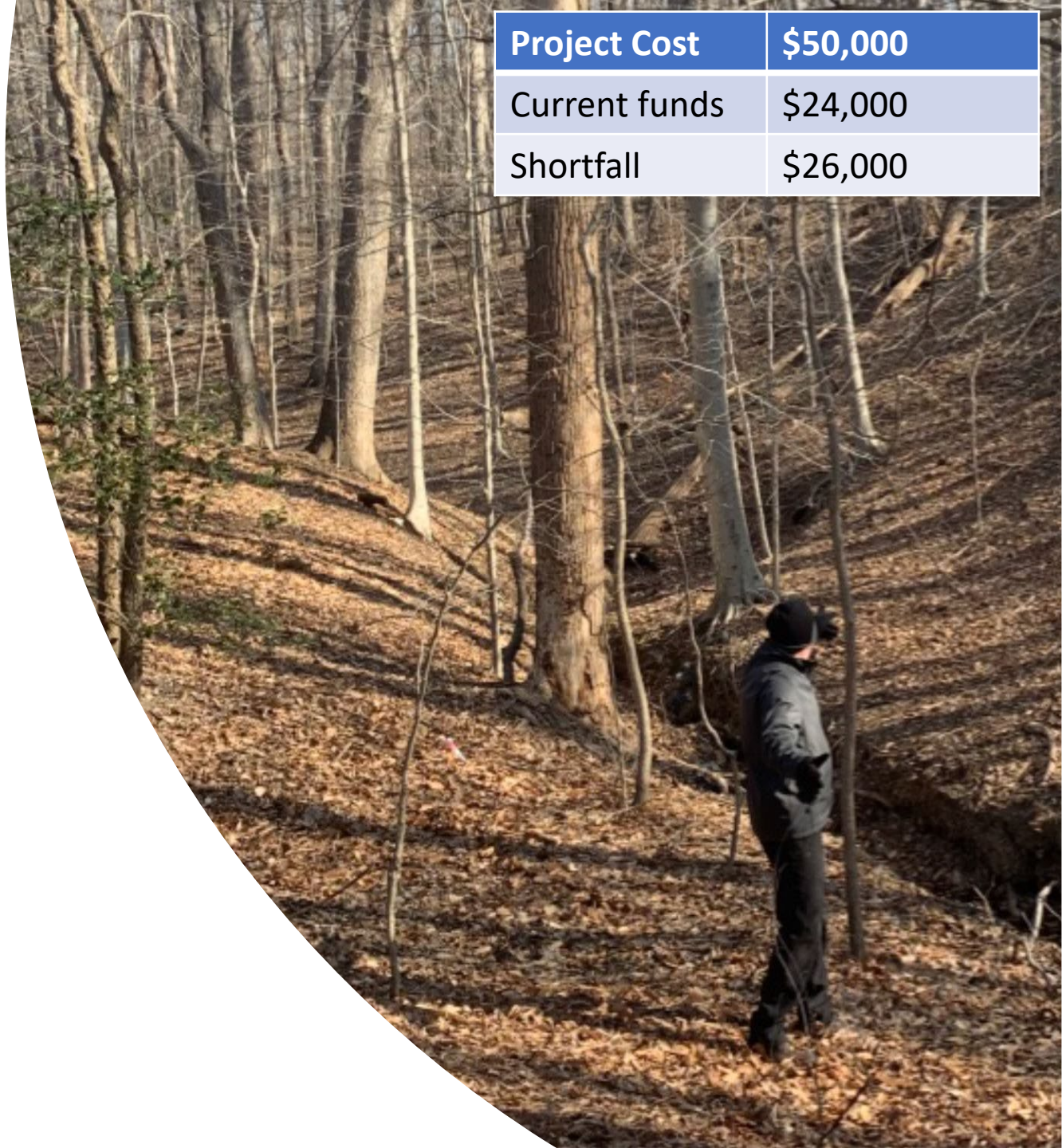
Transforming Liaison Vision into Trails

Locust Shade Park – Triangle VA

Locust Shade is a small county park with diverse terrain situated along Prince William County's Southern portion of the Potomac Heritage Trail Corridor. The County has approved MORE's new trail alignment and is poised to begin construction on a stacked trail system suitable for users of all abilities.

Locust Shade will provide an anchor for the Potomac Heritage Trail and provide connectivity to other nearby popular trail systems, including those aboard Marine Corps Base Quantico (Quantico MTB Club) and the trails in Prince William Forest Park (NPS).

Funding will provide necessary materials for multiple bridges and for the necessary expertise to build the desired trail system.

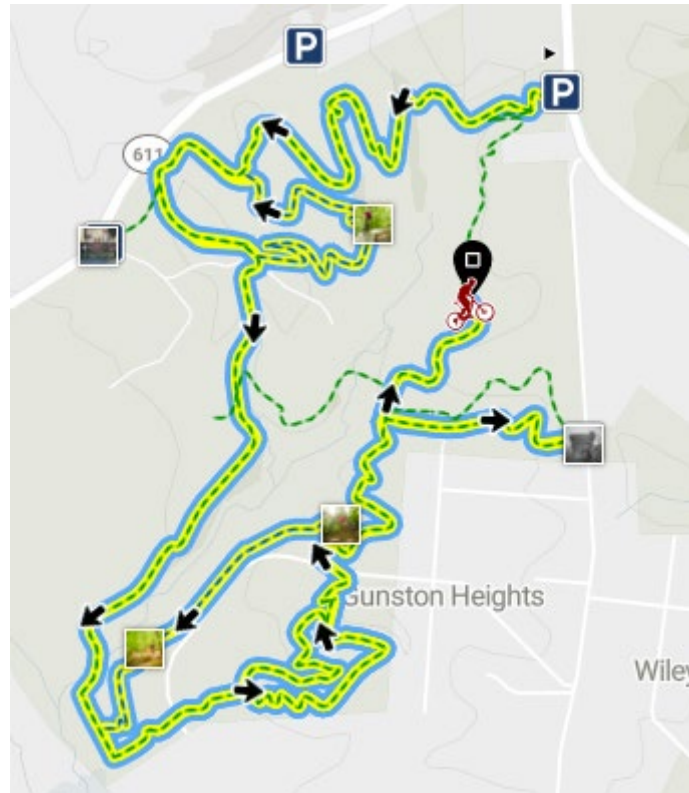


Project Cost	\$50,000
Current funds	\$24,000
Shortfall	\$26,000

Transforming Liaison Vision into Trails

Meadowood– Lorton, VA

The focus of the project is to rehabilitate unsustainable trail along the South Branch Loop trail with a sustainable trail reroute, the planting of native grasses and bushes, and the construction of an elevated boardwalk section.



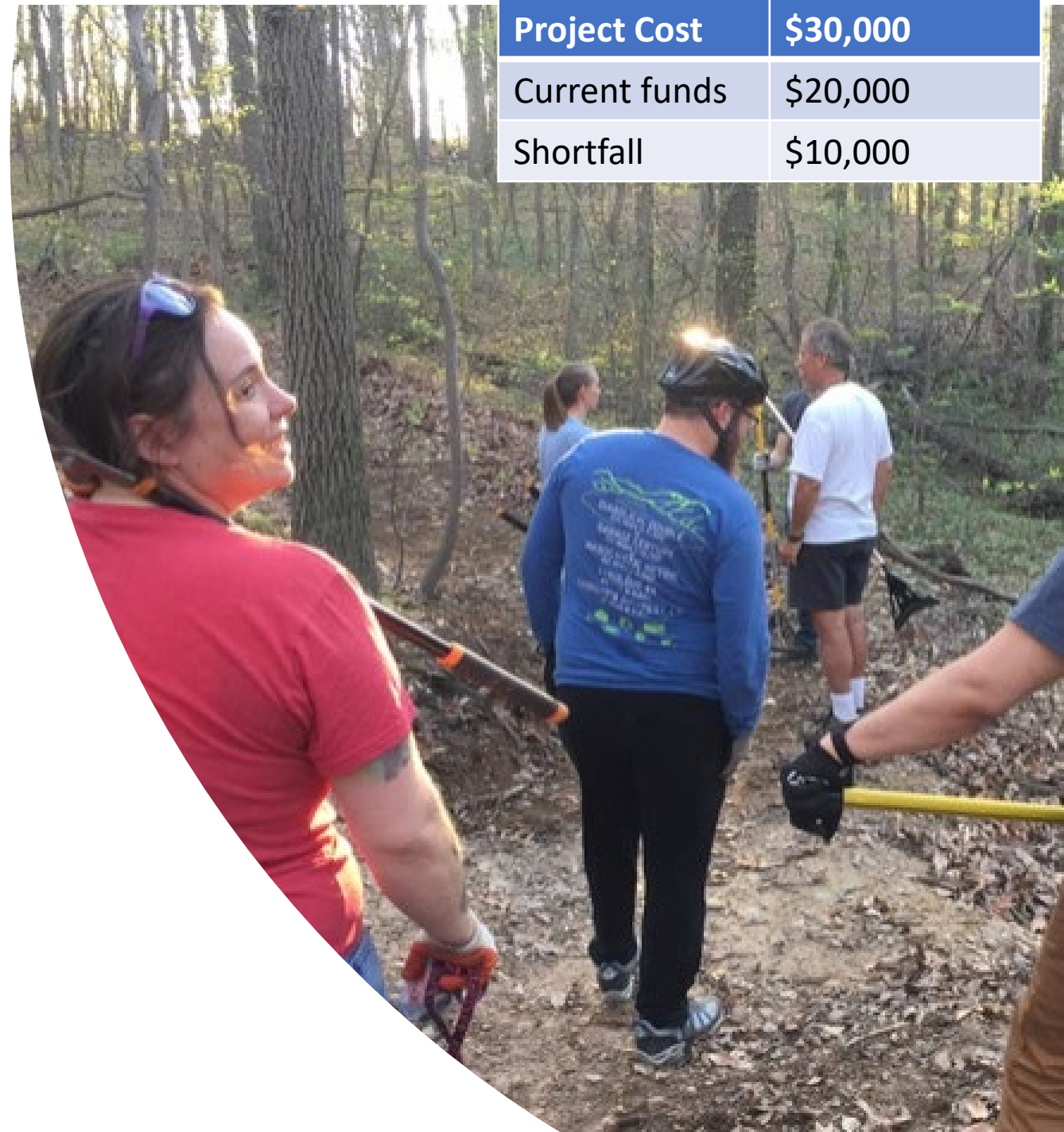
Project Cost	\$10,000
Current funds	\$500
Shortfall	\$9,500

Transforming Liaison Vision into Trails

Mount Vernon Park - Alexandria VA

The 2019 plan includes: Creating sustainable trails thru marshy areas and improving the flow of existing trails; encourage the use of the park for mountain biking education, and adding signage for additional uses: trail running, geocaching, and nature walks.

Project Cost	\$30,000
Current funds	\$20,000
Shortfall	\$10,000



The background image shows a pump track in a forest. In the foreground, a cyclist in a red shirt and yellow helmet is riding a red mountain bike. In the background, another cyclist in a dark shirt and white helmet is riding a smaller bike on a dirt mound. The forest is lush with green trees.

Transforming Liaison Vision into Trails

Brookfield Pump Track, Springfield VA

The focus of this project is to build a connector trail to the Cross County Trail, Lake Accotink Park and Byron Avenue Park. Secondary focus includes improvements to the existing pump track and a skills area.

Project Cost	\$20,000
Current funds	\$500
Shortfall	\$19,500

Transforming Liaison Vision into Trails



Lake Fairfax Park – Reston, VA

In 2019 we'll realize the dream of a contiguous intermediate singletrack loop intertwined with a family friendly natural experience, by building and renovating over 2 miles of natural surface sweetness. Our plan also includes extending the Pump Track with a Dirt Jump section and other skill development features and adding directional signage and improved facilities to complete the bike park experience.

Project Cost	\$130,000
Current funds	\$6,250
Shortfall	\$123,750

