

# DTG/WATER BASED INFRARED DRYERS

## LITTLERED X-D SERIES

Advanced technology speeds curing of ink jet, water-based and discharge inks.

**15 YEAR**  
HEATER WARRANTY



**LR-X2D-30**



**LR-X1D-30**



**LR-X1D-54**



**LR-X3D-78**

LittleRed Digital series dryers have a dual zone heat control, with a boost zone to quickly reach cure temperature. This makes it GREAT Inkjet curing! With a second X3 chamber, the LR-X3D-30-2 and LR-X3D-54-2 can handle higher production including longer times necessary for Kornit printers.

**CE CERTIFIED**  
BY CERTIFICATION EXPERTS  
THE NETHERLANDS

	18" Belt <b>LR-X1D-18</b>	30" Belt <b>LR-X1D-30</b>	30" Belt <b>LR-X2D-30</b>	30" Belt <b>LR-X3D-30</b>	54" Belt <b>LR-X1D-54</b>	54" Belt <b>LR-X3D-54</b>	78" Belt <b>LR-X3D-78</b>
<b>Total Wattage</b>	2,280w	4,050w	6,300w	8,900w	8,100w	17,800w	26,700w
<b>Belt Width</b>	18" (46 cm)	30" (76 cm)	30" (76 cm)	30" (76 cm)	54" (137 cm)	54" (137 cm)	78" (198 cm)
<b>Heater Width</b>	18" (46 cm)	24" (61 cm)	24" (61 cm)	24" (61 cm)	48" (122 cm)	48" (122 cm)	72" (183 cm)
<b>Conveyor Length</b>	48" (122 cm)	48" (122 cm)	66" (168 cm)	88" (224 cm)	66" (168 cm)	88" (224 cm)	102" (260 cm)
<b>Chamber Length</b>	18" (46 cm)	18" (46 cm)	27" (69 cm)	41" (104 cm)	18" (46 cm)	41" (104 cm)	41" (104 cm)
<b>Powered Exhaust</b>	177 CFM (5 CMM)	280 CFM (7.9 CMM)	280 CFM (7.9 CMM)	388 CFM (11 CMM)	280 CFM (7.9 CMM)	550 CFM (15.6 CMM)	1,100 CFM (31.2 CMM)
<b>CURE TIMES</b>							
<b>Plastisol @ 25 secs*</b>	162+/hr	162+/hr	240+/hr	360+/hr	324+/hr	720+/hr	1,080+/hr
<b>Waterbased/Discharge @ 50 secs*</b>	81+/hr	81+/hr	122+/hr	185+/hr	162+/hr	370+/hr	555+/hr
<b>Digital White Ink @ 3 min.*</b>	23/hr	23/hr	34/hr	51/hr	46/hr	103/hr	155/hr

### Features

- HEAVY DUTY** "X-Series" Conveyor Belt Roller Tracking System with Teflon coated fiberglass belt and HD belt motor
- ACCURATE ADJUSTABLE** Dual digital PID Temperature controller is accurate to +/-1°F 2" - 7" (5 - 17.7 cm) belt-to-heater clearance, adjustable separately on each side for each heater
- EXHAUST** High powered exhaust to remove fumes and moisture
- CONSISTENT** Precision DC belt speed control w/ digital display
- EXPANDABLE** Add additional heat chambers and conveyor extensions

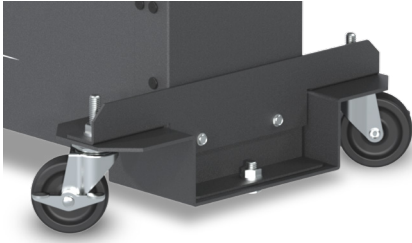
### Options

- Additional chambers can be added as well as belt extensions
- Locking casters for easy mobility
- Creeper gear
- Donut Probe

\* Production speeds are estimates are based on 16" centers and will vary depending on ink manufacturer, humidity of shop, and other variables.

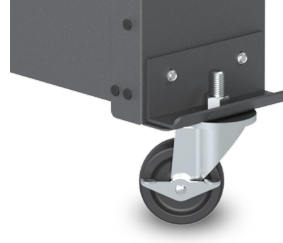


# DTG INFRARED DRYER ACCESSORIES

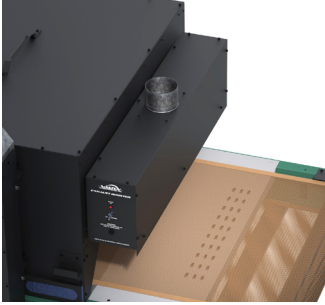


**WS-EDD**  
Drop Down Wheel Set for  
LittleRed Dryers

**WS-EHD**  
Drop Down Wheel Set  
for BidRed Dryers



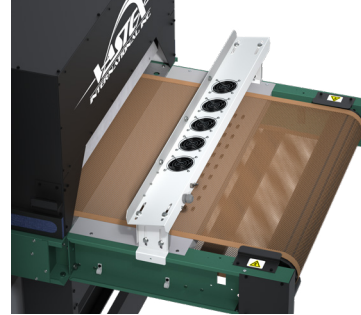
**WS-EC**  
Standard Wheel Set for  
all non-tabletop Dryers



## EXHAUST HOOD

### FEATURES

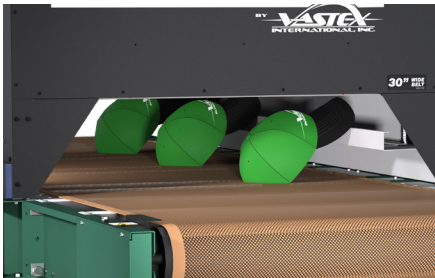
- Removes fumes at exit the dryer
- EXH-30 fits 30" (76cm) wide belts
- EXH-54 fits 54" (137cm) wide belts
- Available in 120v or 240v



## CONVEYOR AIR BAR

### FEATURES

- Cools ink as garments exit the dryer
- CAB-30 fits 30" (76cm) wide belts
- CAB-54 fits 54" (137cm) wide belts
- Work on many non-Vastex dryers
- Available in 120v or 240v



## HAT SUPPORT RAIL

### FEATURES

- Angles hats so front is parallel with heaters
- HR-2 fits BigRed Dryers



## CONVEYOR EXTENSIONS

Extend your conveyor in  
18" (46cm), 36" (92cm) and  
54" (137cm) increments



Vastex recommends the use of a donut probe to check for proper curing of ink throughout the entire layer rather than just on the surface as with an off-contact temperature gun.



# LittleRed XD Series

# Technical Specifications



	LR-X1D-18	LR-X1D-30	LR-X1D-54	LR-X2D-30	Lo-E2	LR-X3D-30	LR-X3D-54	LR-X3D-78
Heater Warranty	15 Year	15 Year	15 Year	15 Year	15 Year	15 Year	15 Year	15 Year
Defect Warranty	3 Year	3 Year	3 Year	3 Year	3 Year	3 Year	3 Year	3 Year
Shirts/hr Plastisol @ 25 secs	162+	162+	324+	240+	88+ @ 90 secs	360+	720+	1,080+
Shirts/hr wbd/discharge @50 secs	81+	81+	162+	122+	88+ @ 90 secs	185+	370+	555+
Shirts/hr DTG/digital	34 @ 2 min. 27 @ 2.5 min. 23 @ 3 min.	34 @ 2 min. 27 @ 2.5 min. 23 @ 3 min.	68 @ 2 min. 54 @ 2.5 min. 46 @ 3 min.	51 @ 2 min. 40 @ 2.5 min. 34 @ 3 min.	45 @ 3 min. 38 @ 3.5 min.	77 @ 2 min. 61 @ 2.5 min. 51 @ 3 min.	154 @ 2 min. 123 @ 2.5 min. 103 @ 3 min.	231 @ 2 min. 185 @ 2.5 min. 155 @ 3 min.
Time in Tunnel Range (mm:ss)	00:21 - 03:07	00:21 - 03:07	00:23 - 03:19	00:31 - 04:40	1:00 - 5:00	00:22 - 03:10	00:22 - 03:10	00:22 - 03:10
Belt Speed	0.7 - 9.3 FPM* (0.2 - 2.8 MPM)	0.7 - 9.3 FPM* (0.2 - 2.8 MPM)	0.7 - 9.3 FPM* (0.2 - 2.8 MPM)	0.7 - 9.3 FPM* (0.2 - 2.8 MPM)	0.7 - 9.3 FPM* (0.2 - 2.8 MPM)	0.7 - 9.3 FPM* (0.2 - 2.8 MPM)	0.7 - 9.3 FPM* (0.2 - 2.8 MPM)	0.7 - 9.3 FPM* (0.2 - 2.8 MPM)
Belt Motor Torque	100 in-lb	100 in-lb	100 in-lb	100 in-lb	100 in-lb	100 in-lb	100 in-lb	100 in-lb
Exhaust (Free Air)	177 CFM (5 CMM)	280 CFM (7.9 CMM)	280 CFM (7.9 CMM)	280 CFM (7.9 CMM)	370 CFM (10.5 CMM)	388 CFM (11 CMM)	550 CFM (15.6 CMM)	1,100 CFM (31.2 CMM)
Exhaust Diameter	4" (10.16 cm)	6" (15.24 cm)	6" (15.24 cm)	6" (15.24 cm)	6" (15.24 cm)	8" (20.32 cm)	8" (20.32 cm)	8" (20.32 cm)
Overall Length	48" (122 cm)	48" (122 cm)	66" (168 cm)	66" (168 cm)	88" (224 cm)	88" (224 cm)	88" (224 cm)	102" (260 cm)
Overall Width	30" (76 cm)	41" (105 cm)	65" (166 cm)	41" (105 cm)	41" (105 cm)	41" (105 cm)	65" (166 cm)	89" (226 cm)
Overall Height	50" (127 cm)	50" (127 cm)	50" (127 cm)	50" (127 cm)	50" (127 cm)	50" (127 cm)	50" (127 cm)	54" (137 cm)
Belt Width	18" (46 cm)	30" (76cm)	54" (137cm)	30" (76cm)	30" (76cm)	30" (76cm)	54" (137cm)	78" (198 cm)
Chamber Length	18" (46 cm)	18" (46 cm)	18" (46 cm)	27"(69cm)	35"(89cm)	41"(104cm)	41"(104cm)	41"(104cm)
Chamber Infeed Width	21" (53 cm)	33.5" (85 cm)	33.5" (85 cm)	33.5" (85 cm)	33.5" (85 cm)	33.5" (85 cm)	57.5" (146 cm)	81.5" (207 cm)
Chamber Infeed Height (adjustable)	2" - 7" (5 - 17.7 cm)	2" - 7" (5 - 17.7 cm)	2" - 7" (5 - 17.7 cm)	2" - 7" (5 - 17.7 cm)	3" - 7" (7.6 - 17.7 cm)	2" - 7" (5 - 17.7 cm)	2" - 7" (5 - 17.7 cm)	2" - 7" (5 - 17.7 cm)
Heat Range @ Heater (at spec voltage)	0-900F* (0-482C*) @ 240V 0-1150F* (621C*) - booster	0-800F* (0-427C*) @ 240V 0-900F* (482C*) - booster	0-800F* (0-427C*) @ 240V 0-900F* (482C*) - booster	0-900F* (0-482C*) @ 240V 0-1150F* (621C*) - booster	0-650F* (0-343C*) @ 230V 0-975F* (524C*) - booster 0-575F* (0-302C*) @ 208V 0-875F* (468C*) - booster	0-900F* (0-482C*) @ 240V 0-1150F* (621C*) - booster	0-900F* (0-482C*) @ 240V 0-1150F* (621C*) - booster	0-900F* (0-482C*) @ 240V 0-1150F* (621C*) - booster
Heater Size	16" x 18" (40 x 45 cm)	16" x 24" (40 x 61 cm)	16" x 48" (40 x 122 cm)	12" x 24" (30 x 61 cm)	18" x 24" (45 x 61 cm)	12" x 24" (30 x 61 cm)	12" x 48" (30 x 122 cm)	12" x 72" (30 x 183 cm)
Total Wattage	2,280 Watts Total (2.28kW)	4,050 Watts Total (4.05kW)	8,100 Watts Total (8.1kW)	6,300 Watts Total (6.3kW)	4,600 Watts Total (4.6kW)	8,900 Watts Total (8.9kW)	17,800 Watts Total (17.8kW)	26,700 Watts Total (26.7kW)
Cost/hr to operate based on 10 cents/kwh	23 cents	41 cents	81 cents	63 cents	46 cents	89 cents	\$1.78	\$2.67
Electrical Specs Chamber	240V / 12.5A / 1 Ph. / NEMA 6-15P	240V / 16A / 1 Ph. / NEMA 6-20P	240V / 32A / 1 Ph. / NEMA 6-20P	240V / 27A / 1 Ph. / 3 wire 50/60HZ	240V / 22A / 1 Ph. / 3 wire 50/60HZ	240V / 38A / 1 Ph. / 3 wire 50/60HZ	240V / 78A / 1 Ph. / 3 wire 50/60HZ	240V / 66A / 3 Ph. / 4 wire 50/60HZ
Electrical Connection	Cordset Included	Cordset Included	All amps shown are FLA (Full Load Amps), not recommended line size! Dryers on this page must be hard wired to the power terminal provided. A licensed electrician must be consulted and should refer to articles, 210.20(a), 215.3 and 310 of the NEC code.					
Optional Power	208V / 14.5A / 1 Ph. / NEMA 6-20P	380V / 8A / 3 Ph. / 5 wire 50/60HZ	380V / 14A / 3 Ph. / 5 wire 50/60HZ	380V / 11A / 3 Ph. / 5 wire 50/60HZ	N/A	240V / 24A / 3 Ph. / 4 wire 50/60HZ 380V / 15A / 3 Ph. / 5 wire 50/60HZ	240V / 45A / 3 Ph. / 4 wire 50/60HZ 380V / 30A / 3 Ph. / 5 wire 50/60HZ	380V / 46A / 3 Ph. / 5 wire 50/60HZ
Unit Weight	172 lbs (78 kg)	220 lbs (100 kg)	380 lbs (173 kg)	304 lbs (137.9 kb)	360 lbs (163.3 kg)	424 lbs (193 kg)	636 lbs (289 kg)	850 lbs (385.6 kg)

## Single Zone Add-on chambers (no boost)

	LR-X1-18#	LR-X1-30#	LR-X1-54#	LR-X2-30#	Lo-E2#	LR-X3-30#	LR-X3-54#	LR-X3-78#
Additional Shirts/hr Plastisol @ 25 secs**	162+	162+	324+	240+	88+ @ 90 secs	360+	720+	1,080+
Additional Shirts/hr wbd/discharge @50 secs**	81+	81+	162+	122+	88+ @ 90 secs	185+	370+	555+
Additional Shirts/hr DTG/digital**	34 @ 2 min. 27 @ 2.5 min. 23 @ 3 min.	34 @ 2 min. 27 @ 2.5 min. 23 @ 3 min.	68 @ 2 min. 54 @ 2.5 min. 46 @ 3 min.	51 @ 2 min. 40 @ 2.5 min. 34 @ 3 min.	45 @ 3 min. 38 @ 3.5 min.	77 @ 2 min. 61 @ 2.5 min. 51 @ 3 min.	154 @ 2 min. 123 @ 2.5 min. 103 @ 3 min.	231 @ 2 min. 185 @ 2.5 min. 155 @ 3 min.
Chamber Length	18" (46 cm)	18" (46 cm)	18" (46 cm)	27"(69cm)	35"(89cm)	41"(104cm)	41"(104cm)	41"(104cm)
Total Wattage		240V / 1 @ 2,600 Watts 120V / 1 @ 2,000 Watts	5,200 Watts	5,200 Watts Total	3,500 Watts Total	7,800 Watts Total	15,600 Watts Total	23,400 Watts Total
Electrical Specs Chamber	240V / 12.5A / 1 Ph. / NEMA 6-15P	240V / 11A / 1 Ph. / 120V / 16.5A / 1 Ph.	240V / 22A / 1 Ph. / 3 wire 50/60HZ	240V / 21.6A / 1 Ph. / 3 wire 50/60HZ	240V / 17A / 1 Ph. / 3 wire 50/60HZ	240V / 34A / 1 Ph. / 3 wire 50/60HZ	240V / 68A / 1 Ph. / 3 wire 50/60HZ	240V / 58A / 3 Ph. / 4 wire 50/60HZ

\*0.3-2.9 FPM (0.1-0.9 MPM) with optional creeper gear

\*\*When added to the rear of a LittleRed XD or Lo-E dryer