



WORKHORSE PRODUCTS

PRECISION SCREEN PRINTING EQUIPMENT

Owner's Manual

Auto Rotation Box



Table of Contents



I. Introduction	3
II. Safety Procedures	4
III. Parts for Assembly	5
IV. Inside the Box	6
V. Assembly	
Step 1: Mounting the Auto Rotation Box Onto the Bottom Shelf	7
Step 2: Inserting the Top Silver Shaft	8
VI. Functions	9
VII. Wiring Diagram	10
VIII. Limited Warranty	11



Congratulations on your purchase of the Auto Rotation Box.

Check the crate for damages. DO NOT accept the crate if there are any damages caused by improper handling during shipping. Immediately report any damages to the carrier and contact Workhorse Products at, 800-778-8779.

Be sure to inspect the crate contents IMMEDIATELY, while the carrier is still present. Even though our packaging has been designed to handle normal shipping conditions, we cannot foresee damages done by the carrier. We will not be responsible for damages that occur during transportation.

If there are damages immediately notify the driver, file a claim with the carrier and call Workhorse Products.

The Importance of the Owner's Manual:

The purpose of the Owner's Manual is to familiarize you with the parts and operations of the Auto Rotation Box. There are step-by-step instructions to assemble the product, explanations of the product's key features, and additional information that will help with the maintenance of the product.

Safety Procedures



WARNING!

RISK OF ELECTRICAL SHOCK! Turn ALL power to unit OFF before service.
All service should be done by or under the supervision of a trained technician.



1. For your safety, do not store or use any flammable liquids in the vicinity (within at least 3 feet) of this appliance.
2. Never place any item other than the stock to be cured or dried under the flash element.
3. Never leave the flash unit unattended when it is operating.
4. Do not perform maintenance on this machine until unit is un-plugged.
5. Never alter the internal wiring of this machine.

THIS ELECTRIC FLASH CURE UNIT IS INTENDED SOLELY FOR THE PURPOSE OF CURING INK ON TO TEXTILE AND CUT GOODS. THIS FLASH IS NOT INTENDED FOR USE IN HEATING, CURING OR BAKING OF ANY OTHER MATERIALS WHATSOEVER. THIS FLASH IS INTENDED FOR IN-DOOR USE ONLY.



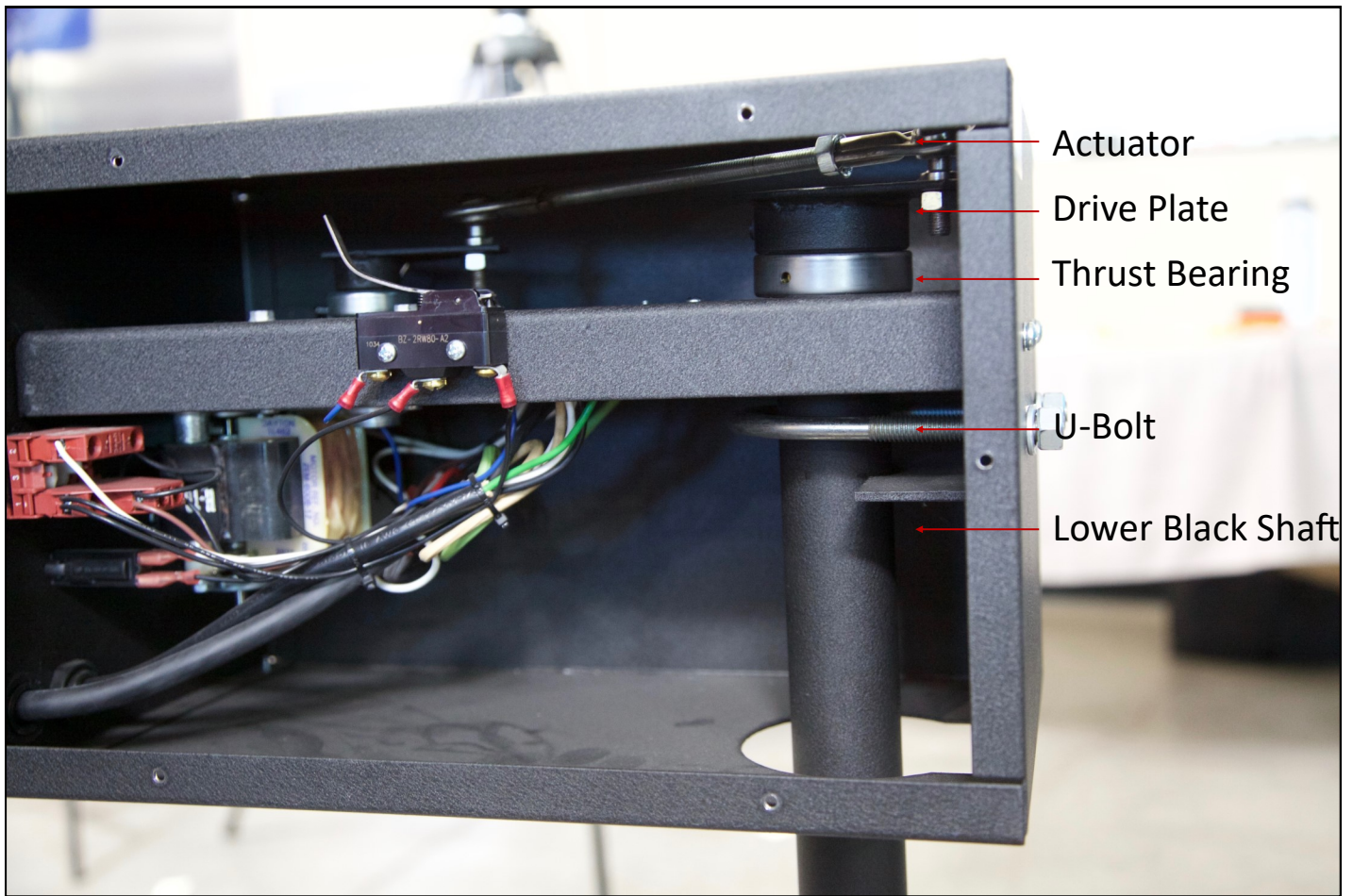
THE EXCLAMATION WITHIN AN EQUILATERAL TRIANGLE IS INTENDED TO ALERT THE USER OF IMPORTANT SAFETY PRECAUTIONS SHOP PERSONNEL SHOULD BE AWARE OF DURING OPERATION.

Parts for Assembly



QTY	Part	Part Number
1	Auto Rotation Box (110v) or (220v)	11010-SS-AUTO or 11010-SS-AUTO-220
1	Long Allen Wrench	N/A
1	Shaft Collar	50-1360

Inside the Box



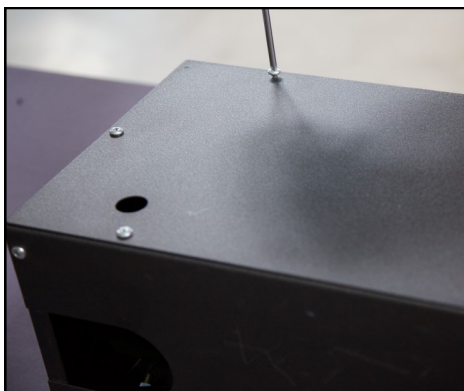
Step 1: Mounting the Auto Rotation Box Onto the Bottom Shaft

Tools needed:

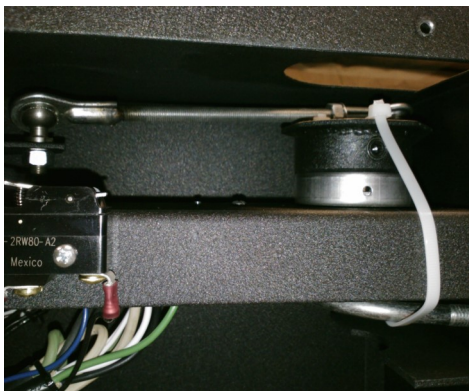
- Screw Driver
- Long Allen Wrench
- 9/16" Socket

Parts needed:

- Auto Rotation Box
- Shaft Collar



1. Lay the box so that the small hole is exposed, and remove the six screws to open the box.



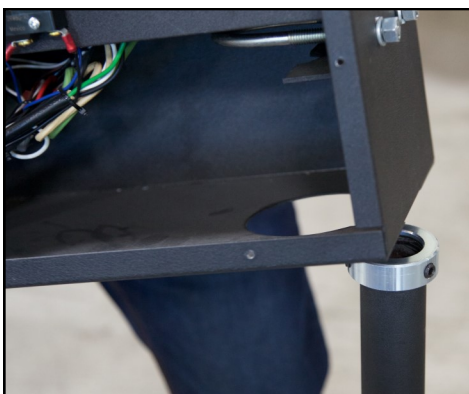
2. Inside the motor assembly, cut the plastic tie and remove the thrust bearing. DO NOT remove the collar that is attached to the actuator. Ensure the set screw on the collar is oriented outward.



3. Remove the height adjustment collar from the stand and remove the silver part of the shaft from the lower black half.



4. Add the replacement shaft collar to the top of the stand and tighten the two screws on the collar before installing the Auto Rotation Box.



5. Check to confirm that the adjustment collar is set so the screw is facing forward and centered. Then place the box onto the outer shaft by inserting the shaft through the bottom opening.



6. Slightly tilt the box forward so the black shaft fits into the half circle bracket. The silver collar sits on top of the bracket. Tighten the U-bolt evenly against the bracket.

Step 2: Inserting the Top Silver Shaft and Finishing the Assembly

Tools needed:

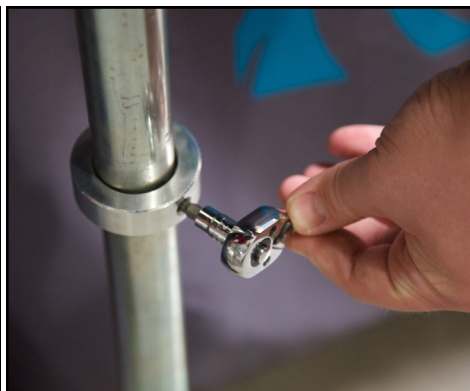
- Screw Driver
- Long Allen Wrench
- 9/16" Socket

Parts needed:

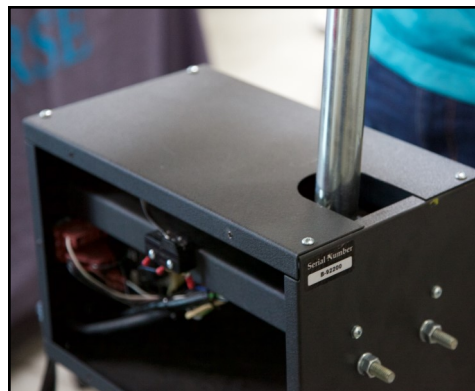
- 6 x screws
- Top Silver Shaft



1. Level the box and securely fasten the U-bolt, do not over tighten.



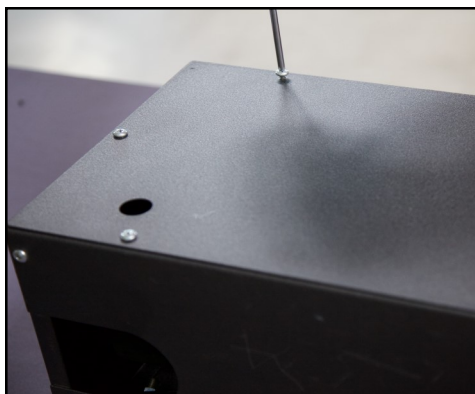
2. Make sure that the silver shaft has a collar tightened onto it. If not, slide the collar up the appropriate amount so that the collar can rest on top of the collar plate inside of the box, and tighten it.



3. Insert the silver portion of the shaft into the top of the box. The shaft extension should pass through the collar, thrust bearing and into the outer support shaft (black shaft).



4. Ensure the silver shaft extension is inserted fully into the outer support shaft. Using the Long Allen Wrench that was included, securely tighten the set screw on the collar.



5. Reattach the cover that was removed in the beginning of Step:1 by reinserting all 6 screws. Align the hole on the cover with the set screw on the collar, in order to have access to adjust the height of the heating element.

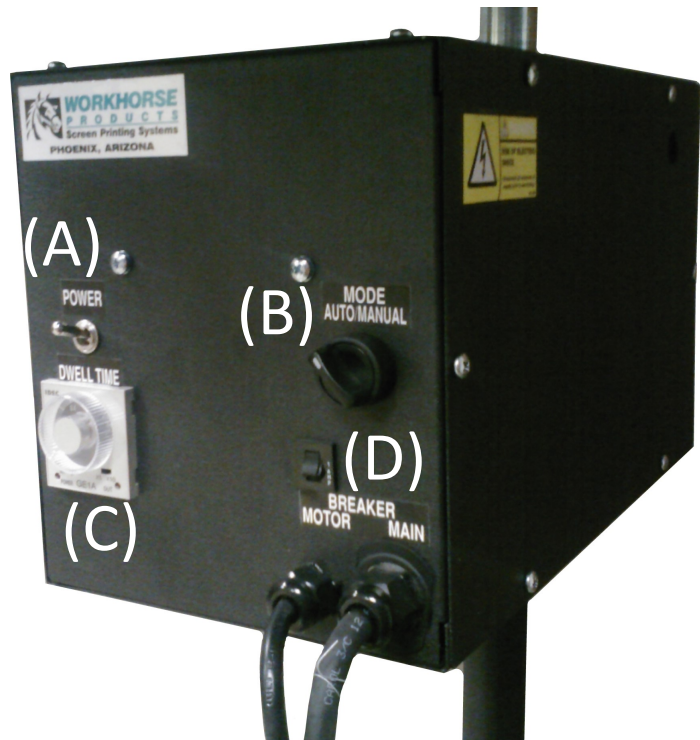


6. Congratulations! The Auto Rotation Box is now fully assembled.

Functions



- (A) Main Power Switch
- (B) Auto/Manual Switch
- (C) Dwell Timer
- (D) Breaker Switch



Auto/Manual Switch (B):

The Auto Rotation Box works in either automatic or manual modes. Automatic mode is controlled by time set on the dwell timer. Manual mode rotates the attached flash cure by using the foot pedal.

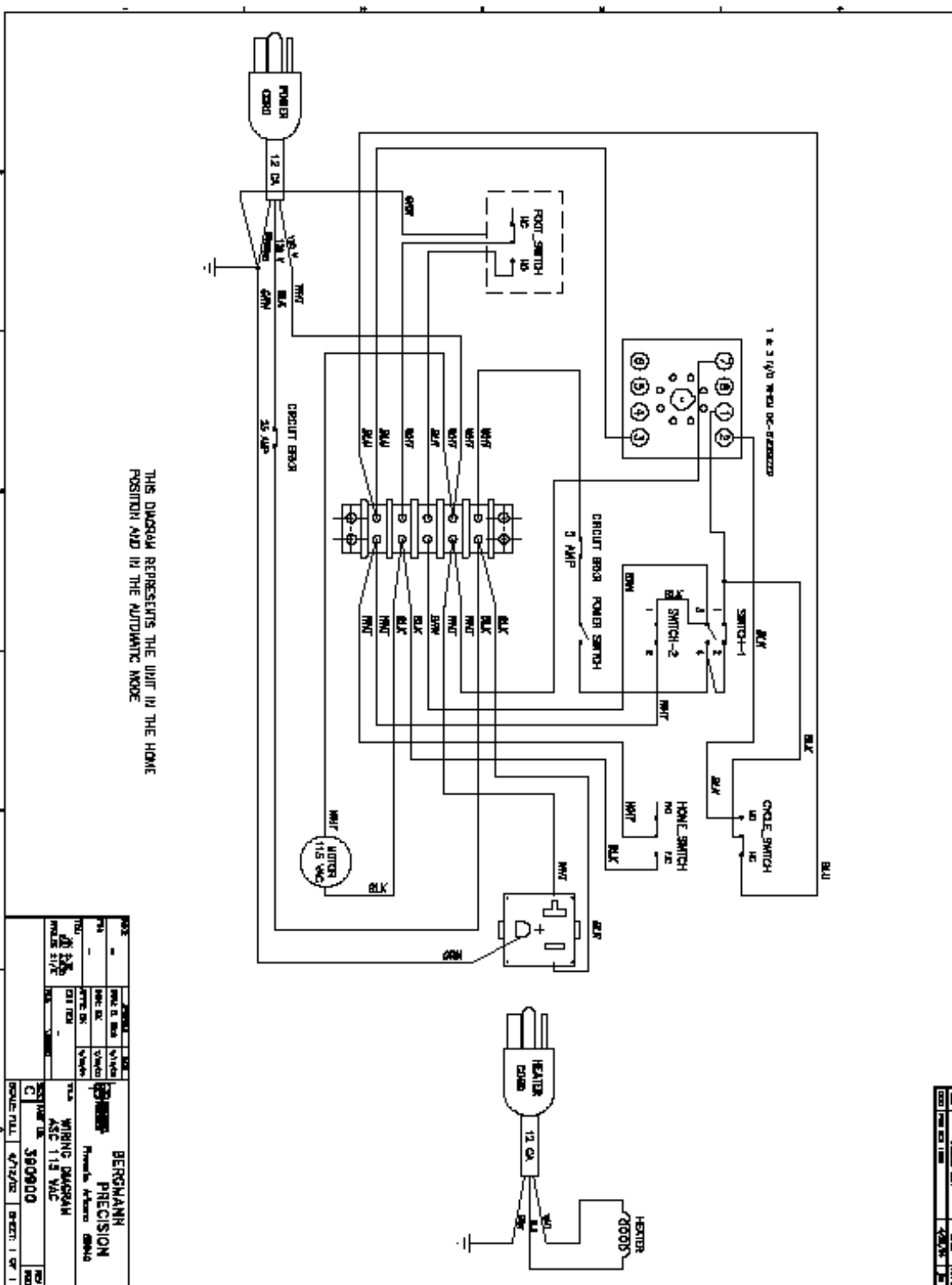
Dwell Timer (C):

The dwell timer controls the amount of time the flash cure stays over the platen to cure the garment. To set it, turn the clear plastic knob to the desired time.

The Super Seca loaded with the Temperature Control Box and the Auto Rotation Box.



Wiring Diagram



Limited Warranty



Although every effort has been made to provide accurate specifications, Workhorse Products does not assume any liability for damages, whether consequential or incidental, that may result from the use or misuse of the indicated specifications. Workhorse Products requires the use of a licensed industrial electrician for the installation of electrical service to equipment requiring electrical power.

Workhorse Products reserves the right to alter specifications in the manufacture of its products. It is understood and agreed that Seller's liability for any equipment whether liability in contract, in tort, under any warranty, in negligence, in strict liability or otherwise shall not exceed the return of the amount of the purchase price paid by Buyer. Notwithstanding the foregoing provision, under no circumstances shall Seller be liable for special, indirect or consequential damages. The price stated for the equipment is a consideration in limiting Seller's liability. No action regardless of form, arising out of the transactions under this Agreement may be brought by Buyer more than one (1) year after the cause of action has occurred. Our warranty is specified is exclusive and no other warranty, whether written or oral, is expressed or implied. Workhorse Products specifically disclaims the implied warranties of merchantability and fitness for a particular purpose. Equipment manufactured or sold by Workhorse Products is warranted against defects in workmanship and materials for a period of one year from receipt by customer. All warranties initiate from date of shipment to original customer. Replacement parts are covered for the term of the equipment warranty period. Parts not under warranty are covered for thirty (30) days from receipt by customer. Any part found by Workhorse Products to be defective in material or workmanship within the stated warranty period will be replaced or repaired at Workhorse's option without charge.

AFTER OBTAINING AN RMA# SEND RETURNED FREIGHT PREPAID TO 3730 E. Southern Avenue, PHOENIX, AZ 85040 USA.

Written authorization must be obtained from Workhorse before any part will be accepted. Replacement parts are sent out freight collect.

Parts sent out prior to receiving defective require a credit card hold for cost plus freight. Upon return of defective part, if it is deemed that the part was not damaged by customer but failed, the cost of the replacement part will be refunded.

This warranty does not extend to expendable parts such as filters, fuses, elements and brushes. Workhorse does not warrant failure of parts or components resulting from misuse or lack of proper maintenance. Installation, inspection, and

Registration Form	
Company Name: _____	Contact Name: _____
Address: _____ _____	Phone Number: _____
City: _____	Fax Number: _____
State: _____	Email : _____
Country: _____	Cell Number: _____
Zip Code: _____	Serial Number: _____
Model Number: _____	Date Recivied: _____
Date Purchased _____	

Please Fax Registration Form for warranty to take place