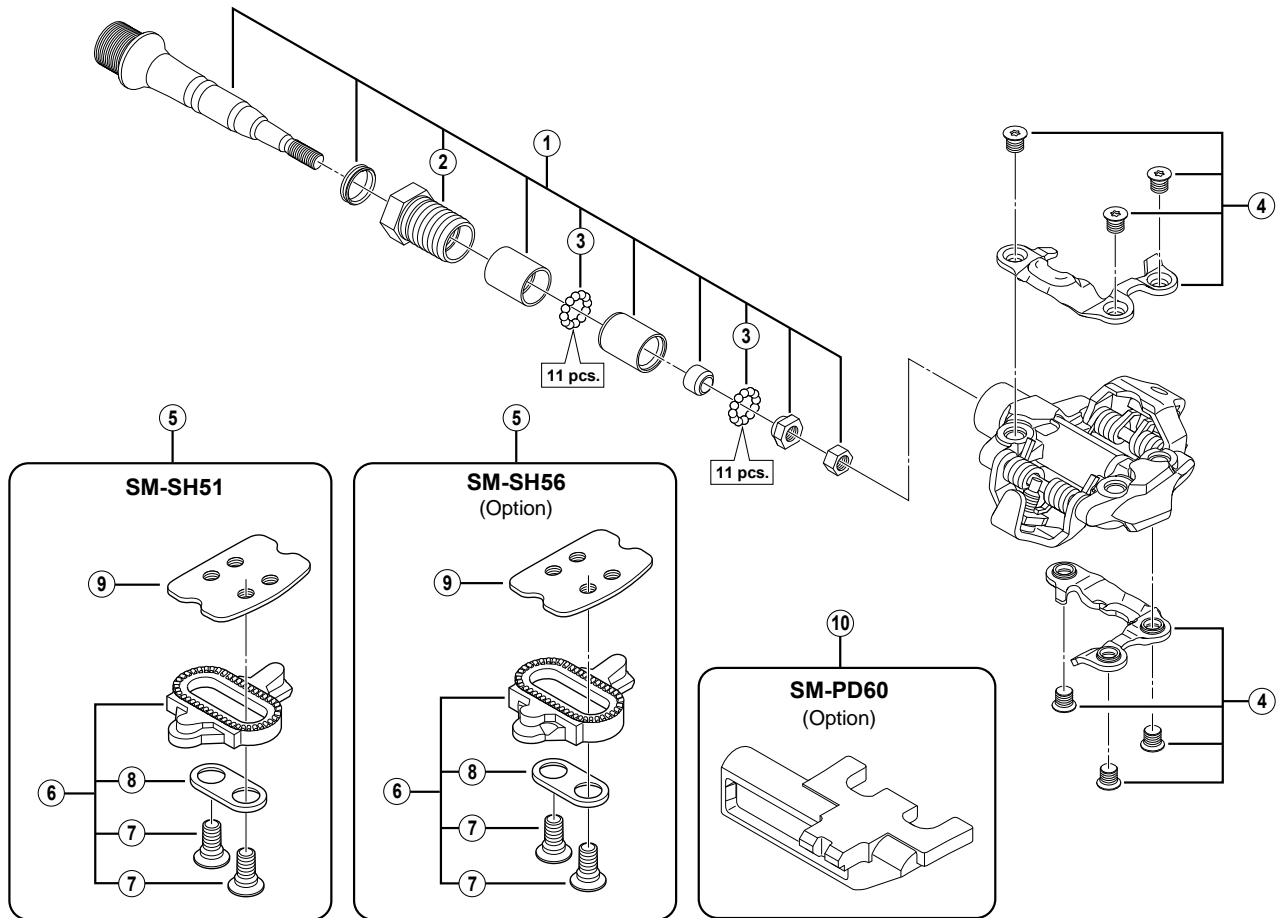


XTR SPD Pedals PD-M9000



PD-M9000

ITEM NO.	SHIMANO CODE NO.	DESCRIPTION	INTERCHANGEABILITY
1	Y46X98050	Pedal Axle Assembly (Right / B.C.9/16" x 20T.P.I.)	B
	Y46X98020	Pedal Axle Assembly (Left / B.C.9/16" x 20T.P.I.)	B
2	Y46X98030	Lock Bolt (Right)	B
	Y46X98040	Lock Bolt (Left)	B
3	Y41N98030	Steel Ball (3/32") 62 pcs.	A
4	Y46F98050	Body Cover (Right) & Fixing Bolts (Hexalobular #10)	A
	Y46F98060	Body Cover (Left) & Fixing Bolts (Hexalobular #10)	A
5	Y42498220	SM-SH51 Cleat Set (Single Release Mode / Pair)	A
	Y41S98092	SM-SH56 Cleat Set (Multiple Release Mode / Pair)	A
6	Y42498201	SM-SH51 Cleat Set w/o Cleat Nut (Single Release Mode / Pair)	A
	Y41S98100	SM-SH56 Cleat Set w/o Cleat Nut (Multiple Release Mode / Pair)	A
7	Y41704030	Cleat Fixing Bolt (1 pc.)	A
8	Y42423000	Cleat Adapter (1 pc.)	A
9	YLOE04000	Cleat Nut (1 pc.)	A
10	Y40Z98010	SM-PD60 Reflector Unit (Pair/Option)	A
	Y40Z98020	SM-PD60 Reflector Unit (AS/Pair/Option)	A

A: Same parts.

B: Parts are usable, but differ in materials, appearance, finish, size, etc.

Absence of mark indicates non-interchangeability.

Jul.-2014-3803
© Shimano Inc. H

Specifications are subject to change without notice.

SHIMANO