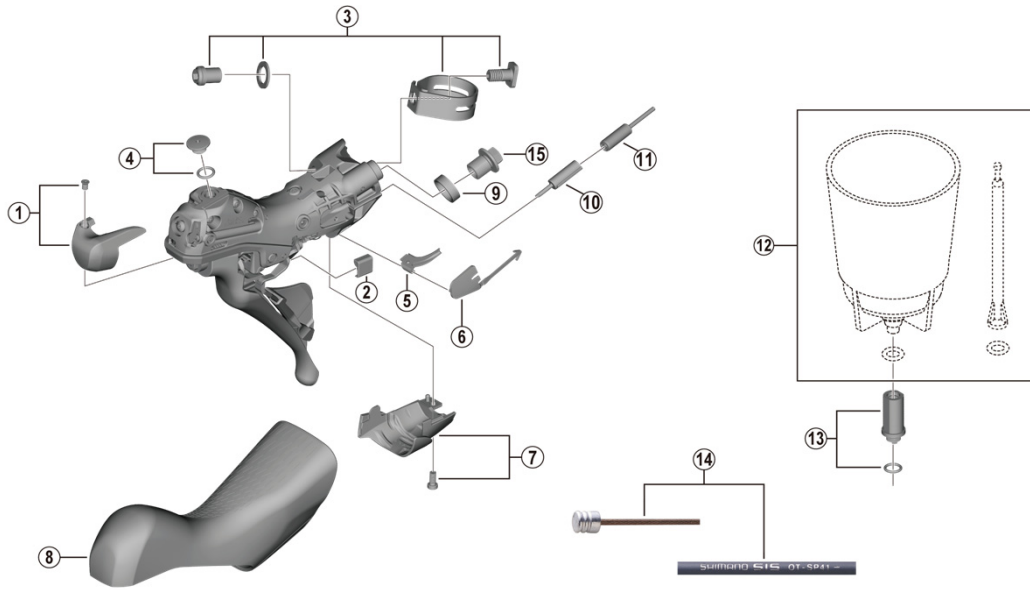


ULTEGRA Dual Control Lever (For Disc Brake)

**ST-R8020** (2x11-speed)



ST-R9120

ITEM NO.	SHIMANO CODE NO.	DESCRIPTION	INTERCHANGEABILITY	
1	<b>Y0E098020</b>	R.H. Name Plate R and Fixing Screw	B	
	<b>Y0E198010</b>	L.H. Name Plate L and Fixing Screw	B	
2	<b>Y63X80000</b>	Main Lever Support R	A	
	<b>Y63X80010</b>	Main Lever Support L	A	
* 3	<b>Y0E098030</b>	Clamp Band Unit Diameter (23.8 - 24.2 mm)	B	
4	<b>Y0C698030</b>	Bleed Screw and O-Ring	A	
	<b>Y07X75000</b>	SL Cable Guide R	A	
5	<b>Y07V75000</b>	SL Cable Guide L	A	
	<b>Y00E75000</b>	SL Cable Cover R	A	
6	<b>Y0C574000</b>	SL Cable Cover L	A	
	<b>Y0C698040</b>	R.H. Unit Cover R and Fixing Screw	A	
7	<b>Y0C598020</b>	L.H. Unit Cover L and Fixing Screw	A	
	<b>Y0E098010</b>	Bracket Covers (Pair)	B	
9	<b>Y0C514000</b>	Joint Support Ring	A	
10	<b>Y63Z27000</b>	Outer Cap with Short Tongue for ST	A	
11	<b>Y63Z28000</b>	Outer Cap with Long Tongue	A	
12	<b>ESMDISCBP</b>	Funnel and Oil Stopper	A	
13	<b>Y0C698050</b>	Funnel Adapter and O-Ring	A	
14	<b>Y63Z98910</b>	OT-SP41 polymer coated shift cable sets (Black) • Outer cap with short tongue for ST-9000 (2 pcs.) • Outer cap with long tongue (3 pcs.) • Sealed outer cap for Rear Derailleur (1 pc.) • Inner end cap (2 pcs.) • Cover with tongue for rear derailleur (1 pc.)		
	<b>Y63Z98920</b>	OT-SP41 polymer coated shift cable sets (White) • Outer cap with short tongue for ST-9000 (2 pcs.) • Outer cap with long tongue (3 pcs.) • Sealed outer cap for Rear Derailleur (1 pc.) • Inner end cap (2 pcs.) • Cover with tongue for rear derailleur (1 pc.)		
	<b>Y63Z98930</b>	OT-SP41 polymer coated shift cable sets (Red) • Outer cap with short tongue for ST-9000 (2 pcs.) • Outer cap with long tongue (3 pcs.) • Sealed outer cap for Rear Derailleur (1 pc.) • Inner end cap (2 pcs.) • Cover with tongue for rear derailleur (1 pc.)		
	<b>Y63Z98940</b>	OT-SP41 polymer coated shift cable sets (High-tech gray) • Outer cap with short tongue for ST-9000 (2 pcs.) • Outer cap with long tongue (3 pcs.) • Sealed outer cap for Rear Derailleur (1 pc.) • Inner end cap (2 pcs.) • Cover with tongue for rear derailleur (1 pc.)		
	<b>Y63Z98980</b>	OT-SP41 polymer coated shift cable sets (Orange) • Outer cap with short tongue for ST-9000 (2 pcs.) • Outer cap with long tongue (3 pcs.) • Sealed outer cap for Rear Derailleur (1 pc.) • Inner end cap (2 pcs.) • Cover with tongue for rear derailleur (1 pc.)		
	<b>Y63Z98990</b>	OT-SP41 polymer coated shift cable sets (Green) • Outer cap with short tongue for ST-9000 (2 pcs.) • Outer cap with long tongue (3 pcs.) • Sealed outer cap for Rear Derailleur (1 pc.) • Inner end cap (2 pcs.) • Cover with tongue for rear derailleur (1 pc.)		
	<b>Y63Z98991</b>	OT-SP41 polymer coated shift cable sets (Blue) • Outer cap with short tongue for ST-9000 (2 pcs.) • Outer cap with long tongue (3 pcs.) • Sealed outer cap for Rear Derailleur (1 pc.) • Inner end cap (2 pcs.) • Cover with tongue for rear derailleur (1 pc.)		
	<b>Y63Z98992</b>	OT-SP41 polymer coated shift cable sets (Yellow) • Outer cap with short tongue for ST-9000 (2 pcs.) • Outer cap with long tongue (3 pcs.) • Sealed outer cap for Rear Derailleur (1 pc.) • Inner end cap (2 pcs.) • Cover with tongue for rear derailleur (1 pc.)		
15	<b>Y8RD02000</b>	Flange Flare Nut (M9/Black)		

A: Same parts.

B: Parts are usable, but differ in materials, appearance, finish, size, etc.

Absence of mark indicates non-interchangeability.

Specifications are subject to change without notice.

Sep.-2020-4245D

© Shimano Inc. I

**SHIMANO**