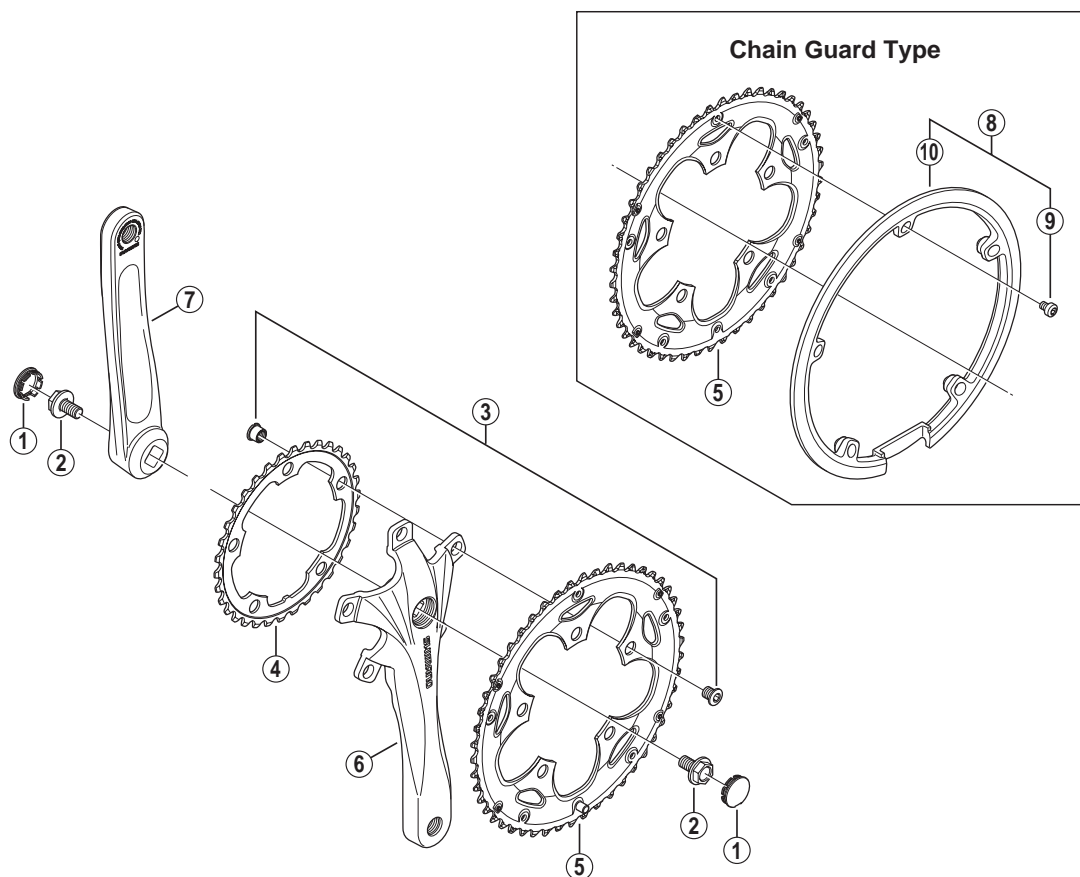


# Front Chainwheel FC-2350



• Bolt circle diameter: 110 mm

ITEM NO.	SHIMANO CODE NO.	DESCRIPTION	INTERCHANGEABILITY
1	Y1KR15000	Crank Arm Cap (Silver)	A
	Y1KR15200	Crank Arm Cap (Black)	A
2	Y15507000	Crank Arm Fixing Bolt	A A
3	Y1LN98030	Gear Fixing Bolt (M8 x 8.5) & Nut (5 sets)	A
4	Y1M834000	Chainring 34T (Silver)	
	Y1M834010	Chainring 34T (Black)	
5	Y1M898010	Chainring 50T-F (Silver)	
	Y1M898020	Chainring 50T-F (Black)	
	Y1M898030	Chainring 50T-F (Silver) for Chain Guard	
*	Y1M807000	Right Hand Crank Arm 165 mm (Silver)	
*	Y1M807010	Right Hand Crank Arm 165 mm (Black)	
6	Y1M805000	Right Hand Crank Arm 170 mm (Silver)	
	Y1M805100	Right Hand Crank Arm 170 mm (Black)	
	Y1M803000	Right Hand Crank Arm 175 mm (Silver)	
	Y1M803100	Right Hand Crank Arm 175 mm (Black)	
*	Y1LN07100	Left Hand Crank Arm 165 mm (Silver)	
*	Y1LN07110	Left Hand Crank Arm 165 mm (Black)	
7	Y1LN05100	Left Hand Crank Arm 170 mm (Silver)	A
	Y1LN05110	Left Hand Crank Arm 170 mm (Black)	A
	Y1LN03100	Left Hand Crank Arm 175 mm (Silver)	A
	Y1LN03110	Left Hand Crank Arm 175 mm (Black)	A
8	Y1M898040	Chain Guard & Fixing Bolts	
9	Y1M898050	Chain Guard Fixing Bolt (5 pcs.)	
10	Y1HA12000	Chain Guard	

FC-2300  
FC-2200

A: Same parts.

B: Parts are usable, but differ in materials, appearance, finish, size, etc.

Absence of mark indicates non-interchangeability.

Dec.-2011-3098A

© Shimano Inc. I

Specifications are subject to change without notice.

# SHIMANO