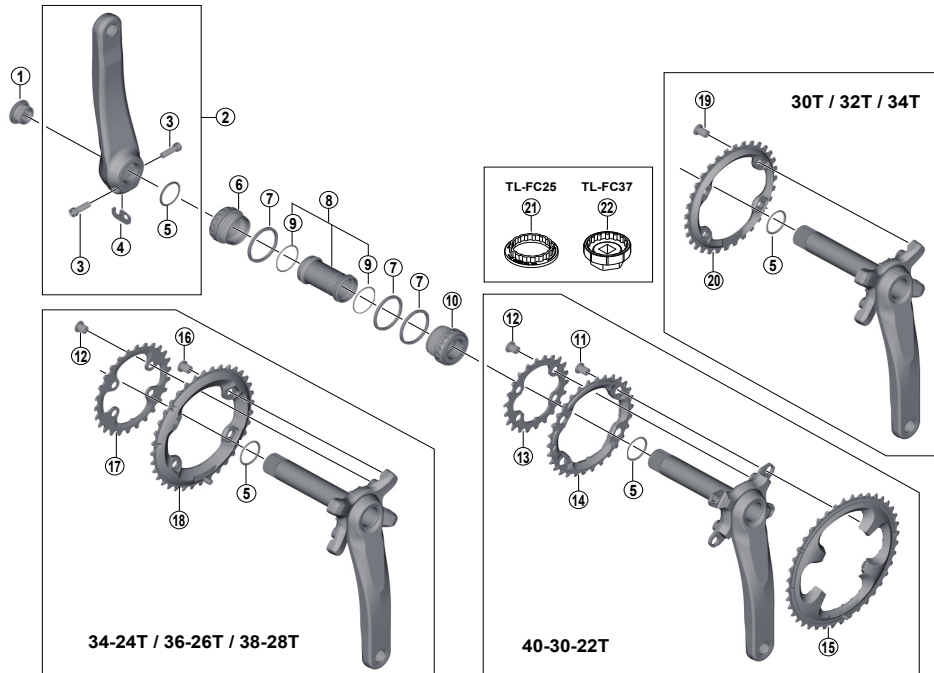


DEORE XT Crankset

FC-M8000 FC-M8000-B1/B2
BB-MT800 SM-CRM80/CRM81



- Chaining teeth combinations: 40-30-22T / 38-28T / 36-26T / 34-24T / 34T / 32T / 30T
- Bolt circle diameter: 96 mm...(For outer gear and middle gear), 64 mm...(For inner gear)

FC-M9000
 FC-M9020
 FC-M780
 FC-M782
 FC-M785

ITEM NO.	SHIMANO CODE NO.	DESCRIPTION	INTERCHANGEABILITY				
			FC-M9000	FC-M9020	FC-M780	FC-M782	FC-M785
1	Y1F811100	Crank Arm Fixing Bolt	B	B	A	A	A
2	Y1RL98010	Left Hand Crank Arm Unit 165 mm					
	Y1RL98020	Left Hand Crank Arm Unit 170 mm					
	Y1RL98030	Left Hand Crank Arm Unit 175 mm					
	Y1RL98040	Left Hand Crank Arm Unit 180 mm					
* 3	Y1GS21000	Clamp Bolt with Washer (M6 x 21)					
4	Y1FU98120	Plate			A	A	A
5	Y1F316000	Ring	A	A	A	A	A
6	Y1V698010	Left Hand Adapter (B.C.1.37" x 24T) English Thread (BB-MT800)	B	B	B	B	B
7	Y1F813000	Spacer (2.5 mm)			A	A	A
8	Y1E598210	Inner Cover & O-Ring	B	B	A	A	A
9	Y1TF21000	O-Ring	A	A	A	A	A
10	Y1V698020	Right Hand Adapter (B.C.1.37" x 24T) English Thread (BB-MT800)	B	B	B	B	B
11	Y1H598160	Gear Fixing Bolt (M8 x 10.1 / 1 Unit = 4 pcs.)				A	A
12	Y1NV98040	Inner Gear Fixing Bolt (M8 x 8.5 / 1 Unit = 4 pcs.)			A	A	A
13	Y1RL22000	Chainring 22T-BA for 40-30-22T					
14	Y1RL98110	Chainring 30T-BA for 40-30-22T					
15	Y1RL98050	Chainring 40T-BA for 40-30-22T					
16	Y1RL98060	Gear Fixing Bolt (M8 x 9 / 1 Unit = 4 pcs.)					
17	Y1RL24000	Chainring 24T-BB for 34-24T					
	Y1RL26000	Chainring 26T-BC for 36-26T					
	Y1RL28000	Chainring 28T-BD for 38-28T					
	Y1RL98070	Chainring 34T-BB for 34-24T					
18	Y1RL98080	Chainring 36T-BC for 36-26T					
	Y1RL98090	Chainring 38T-BD for 38-28T					
	Y1RL98100	Gear Fixing Bolt (M8 x 11.4 / 1 Unit = 4 pcs.)					
20	ISMCRM80A0	Chainring 30T (SM-CRM80)					
	ISMCRM80A2	Chainring 32T (SM-CRM80)					
	ISMCRM80A4	Chainring 34T (SM-CRM80)					
	ISMCRM81A0	Chainring 30T (SM-CRM81)					
	ISMCRM81A2	Chainring 32T (SM-CRM81)					
	ISMCRM81A4	Chainring 34T (SM-CRM81)					
21	Y13009260	TL-FC25 Adapter Installation Tool					
22	Y13009270	TL-FC37 Adapter Installation Tool					

A: Same parts.

B: Parts are usable, but differ in materials, appearance, finish, size, etc.

Absence of mark indicates non-interchangeability.

Specifications are subject to change without notice.

Nov.-2017-3849B

© Shimano Inc. I

SHIMANO