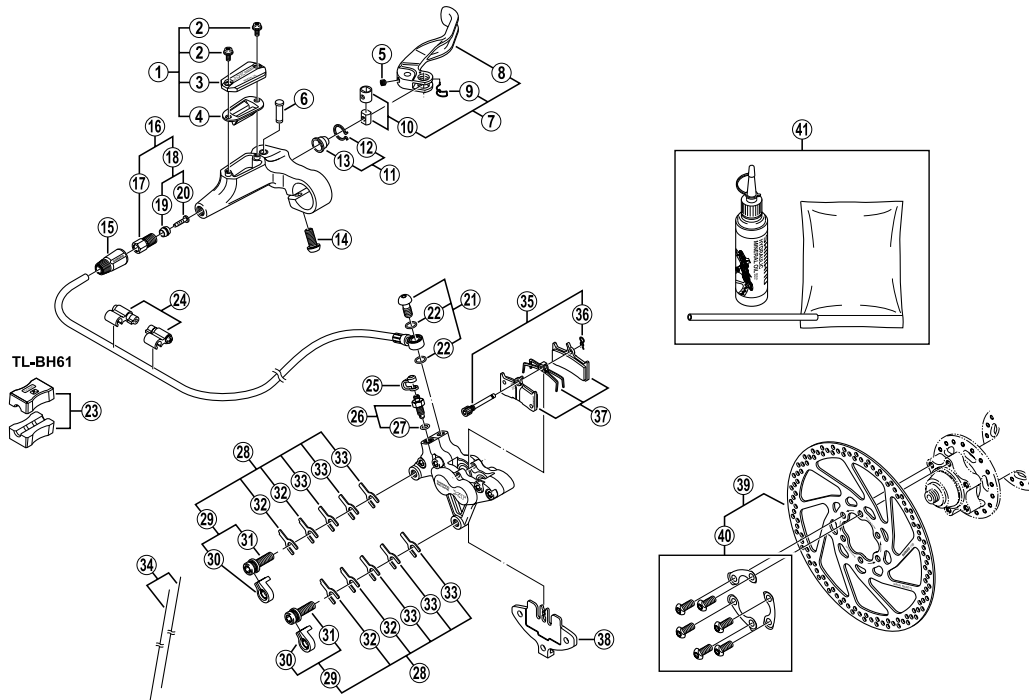


DEORE XT Rear Disc Brake

**BR-M755** Brake Caliper  
**BL-M756** Brake Lever

**SM-RT75** Disc Rotor  
**SM-BH63** Brake Hose

**SM-DB-OIL** Mineral Oil  
**SM-HANG** Hose Supporter



ITEM NO.	SHIMANO CODE NO.	DESCRIPTION
* 1	<b>Y-8S5 98020</b>	R.H. Lid Unit
	<b>Y-8S5 98060</b>	R.H. Lid Unit for BL-M756-S
* 2	<b>Y-8SY 24000</b>	Lid Fixing Screw
* 3	<b>Y-8S4 07030</b>	R.H. Lid
	<b>Y-8S4 07050</b>	R.H. Lid for BL-M756-S
* 4	<b>Y-8S1 06000</b>	Diaphragm
* 5	<b>Y-6AR69000</b>	Lever Axle Fixing Bolt (4 mm)
* 6	<b>Y-8SY 98040</b>	Lever Axle
	<b>Y-8S5 98030</b>	Lever Unit
* 7	<b>Y-8S5 98070</b>	Lever Unit for BL-M756-S
	<b>Y-8SZ 05300</b>	Lever Member
* 8	<b>Y-8SZ 05400</b>	Lever Member for BL-M756-S
9	<b>Y-8SY 13000</b>	Boss Spring
* 10	<b>Y-6JK 98070</b>	Reach Adjusting Boss & Sleeve
11	<b>Y-8SY 98070</b>	Boot & Stopper
12	<b>Y-8SY 30000</b>	Boot Stopper
13	<b>Y-8SY 17000</b>	Boot
14	<b>Y-8SB 10000</b>	Clamp Bolt (M6 x 14.8)
* 15	<b>Y-8H2 03010</b>	Cover
16	<b>Y-8H2 98010</b>	Connecting Bolt Unit
* 17	<b>Y-8H2 01000</b>	Connecting Bolt
18	<b>Y-8H2 98020</b>	Olive & Connecting Insert
* 19	<b>Y-8H2 04000</b>	Olive
* 20	<b>Y-8H2 02000</b>	Connecting Insert
* 21	<b>Y-8H0 98010</b>	Banjo Bolt & O-Ring
22	<b>Y-8SY 28000</b>	O-Ring
23	<b>Y-8H1 98030</b>	TL-BH61 Special Tool (2 pcs.)
24	<b>Y-830 98040</b>	Hose Supporter A & B
25	<b>Y-8B2 14000</b>	Bleed Nipple Cap
26	<b>Y-8B2 98080</b>	Bleed Nipple (8 mm) & Seal Ring (φ7.6 mm)
27	<b>Y-8B2 23003</b>	O-Ring (φ7.6 mm) for Bleed Nipple
28	<b>Y-8B2 98130</b>	Caliper Fixing Bolt Unit
29	<b>Y-8C4 98010</b>	Caliper Fixing Bolt & Stop Ring
30	<b>Y-8C5 11000</b>	Stop Ring
31	<b>Y-8C5 09000</b>	Caliper Fixing Bolt (M6 x 20)
32	<b>Y-8CL 13000</b>	Spacer (0.5mm)
33	<b>Y-8CL 14000</b>	Adjusting Washer (0.2 mm)
34	<b>Y-8B2 98010</b>	Wire (2 pcs.)
35	<b>Y-8B2 98050</b>	Pad Axle & Snap Ring
36	<b>Y-8B2 12000</b>	Snap Ring
	<b>Y-8B2 98060</b>	Metal Pad (M03) & Spring
	<b>Y-8B2 98090</b>	Resin Pad (M04) & Spring
37	<b>Y-8B2 30000</b>	Pad Spacer
38	<b>Y-8B2 30000</b>	Pad Spacer
39	<b>Y-818 98010</b>	Disc Rotor Unit (φ160 mm)
40	<b>Y-818 98030</b>	Disc Rotor Fixing Bolt & Plate
41	<b>Y-839 98010</b>	Mineral Oil Bleed Kit (50 ml)

0408-2158A

Specifications are subject to change without notice.

**SHIMANO**